

## *Hyphoderma roseocremeum*

Figures 1–6

*Corticium roseocremeum* Bres. 1905 [2 : 163] ≡ *Gloeocystidium roseocremeum* (Bres.) Brinkmann 1906 [3 : 2, no. 47 [? see Pfister 1985: 118]] ≡ *Hyphoderma roseocremeum* (Bres.) Donk 1957 [4 : 15]

**Basidiome** effused, adherent, subceraceous, slightly crustose when dry, up to 0.3 mm thick.

**Hymenophore** smooth to shallowly tuberculated, whitish to pale yellowish, often with a rosy or violaceous tint, ochraceous in herbarium.

**Margin** determinate or attenuate, poorly differentiated, pruinose, whitish.

**Hyphal system** monomitic; hyphae with fibulate primary septa, (2.5) 3–5.5 (6)  $\mu\text{m}$  in diam., hyaline; subicular ones with thickening wall.

**Cystidia** cylindrical, tubular, slightly sinuose, 30–100 (130)  $\times$  6–10  $\mu\text{m}$ , thin-walled, hyaline, enclosed or slightly projecting up to 30  $\mu\text{m}$ .

**Dendrohyphidia** present in some specimens, poorly branched, 1.5–2.5  $\mu\text{m}$  in diam.

**Basidia** subclavate to suburniform with a median compression, 25–50  $\times$  6–8  $\mu\text{m}$ ; 4 sterigmata.

**Basidiospores** narrowly ellipsoid to subcylindrical, with a flattening adaxial side or rarely slightly concave, from 9–12  $\times$  3–4  $\mu\text{m}$  to 10–13 (14)  $\times$  (4.5) 5–5.5 (6)  $\mu\text{m}$ , smooth, thin-walled, hyaline.

**Chemical reactions:** IKI–; CB–; SA–

### Voucher specimens

FRANCE — **Alpes-Maritimes** – Ile Sainte-Marguerite, on wood and bark of a decayed twig of a deciduous tree, leg. E. & F. Martini, 31.X.1997 (em-6381) — **Cher** – Rians, on lying, strongly decayed wood of a deciduous tree, leg. H. Triballat, IV.2005 (em-8575) — **Pyrénées-Orientales** – Reserve naturelle de la forêt de la Massane, on

wood and bark of a lying, strongly decayed trunk of *Fagus sylvatica*, leg. E. Martini, 6.XI.2008 (em-10642) — **Rhône** – St. Martin-en-Haut, Bois de Remayou, on wood of a lying, decayed branch of *Quercus sp.*, leg. E. Martini, 11.X.2015 (em-12692) — **Seine-et-Marne** – Forêt de Fontainebleau, Le Gros Fouteau, parcelle 268, on wood of a lying, decayed trunk of a deciduous tree, leg. E. Martini, 2.XI.2006 (em-9408) — **Var** – Bagnoles en-Forêt, on wood of a decayed trunk of a deciduous tree, leg. E. & F. Martini, 30.X.1997 (em-6360)

**SWITZERLAND** — **Fribourg** – Corninboeuf, La Bioleire, on wood of a lying, strongly decayed branch of *Picea abies*, leg. E. Martini, 3.X.1998 (em-6701) — **Graubünden** – Mesocco, Bulù, on wood and bark of a lying, hard branch of *Tilia cordata*, leg. E. Martini, 12.VII.1992 (em-3420) — **Ticino** – Bignasco, Besso, on wood of a lying, strongly decayed branch of *Corylus avellana*, leg. E. Martini, 29.VIII.1993 (em-3547) – Bignasco, Piano di Sopra, on bark of a lying, rather hard trunk of *Abies alba*, leg. E. Martini, 14.VIII.2014 (em-12228) – Brione (Verzasca), Ganóm, on wood of a lying, decayed branch of *Tilia cordata*, leg. E. Martini, 11.VI.2011 (em-11505) – Brissago, Isole, on lying, decayed wood of a deciduous tree, leg. E. Zenone, 16.X.1990 (em-4763) – Cavigno, Faula, on wood of a lying, rather hard branch of *Quercus petraea*, leg. E. Martini, 29.IX.2015 (em-12673) – Cavigno, Ranèe, on wood of a lying, rather hard branch of a deciduous tree, leg. E. Martini, 4.VIII.2014 (em-12209) – Cevio, Consorzio, on wood of a lying branch of a coniferous tree, leg. E. Martini, 26.V.1995 (em-5696) – Croglia, Madonna del Piano, on bark of a lying, rather hard twig of *Tilia cordata*, leg. E. Martini, 31.X.1994 (em-3886) – Fontanellata (Valle Bavona), on wood of a lying, rather hard branch of *Corylus avellana*, leg. E. Martini, 4.VIII.2009 (em-10869) – Fusio, Fontana Torta, on lying, strongly decayed wood, leg. E. Martini, 4.VI.1988 (em-2253) – Fusio, Piano di Bosco, on lying, decayed leaves of a broadleaved tree, leg. E. Martini, 10.VIII.2015 (em-12618) – Iseo, on bark of a decayed branch of a deciduous tree, leg. E. Martini, 12.IX.1987 (em-1179) – Meride, Bagno, on wood of a lying, decayed trunk of a deciduous tree, leg. E. Martini, 2.VI.2007 (em-9842) – Meride, Bolle, on wood of a lying, decayed trunk of a deciduous tree, leg. E. Martini, 26.XI.2006 (em-9562) – Meride, Cassina, on wood of a lying, rather hard trunk of a deciduous tree, leg. E. Martini, 30.IX.2006 (em-8979) – Meride, Crocifisso, on bark of a lying, rather hard branch of *Corylus avellana*, leg. E. Martini, 27.X.2007 (em-10259) – Meride, Meriggio, on wood of a lying, decayed trunk of *Fagus sylvatica*, leg. E. Martini, 25.VIII.2007 (em-10065) – Meride, Murgala, on wood of a lying, strongly decayed trunk of a deciduous tree, leg. E. Martini, 17.IX.2006 (em-8933) – Meride, Serpiano, on wood and bark of a lying, decayed branch of a deciduous tree, leg. E. Martini, 14.X.1994 (em-5609) – Meride, Val Porina, on wood and bark of a lying, decayed trunk of *Fraxinus excelsior*, leg. E. Martini, 10.III.2007 (em-9737) – Mondada, Gramusè (Valle Bavona), on bark of a lying, decayed branch of *Prunus avium*, leg. E. Martini, 20.VIII.1989 (em-2406) – *ibid.*, on wood of a lying, hard trunk of *Betula pendula*, leg. E. Martini, 11.XI.1990 (em-2845) – *ibid.*, on wood of a lying, decayed trunk of *Castanea sativa*, leg. E. Martini, 28.IV.2001 (em-7385) – Monte, Campora, Chignö, on bark of a lying, decayed branch of a deciduous tree, leg. F. Delmenico, 21.II.2012 (em-11945.2) – Novazzano, Valle della Motta, on lying, decayed wood of a deciduous tree, leg. E. Zenone, 24.X.1991 (em-3073) – Prato, Foppa, on wood of a lying, decayed branch of a deciduous tree, leg. J. Keller, 6.VI.1992 (em-3148) – Ritorto, Dréom (Valle Bavona), on bark of a lying, decayed branch of *Tilia cordata*, leg. E. Martini, 21.IV.1990 (em-2561) – Sabbione, Caslitt (Valle Bavona), on wood of a lying, decayed trunk of *Tilia cordata*, leg. E. Martini, 9.VI.1990 (em-2718) – Sonlerto, Bolla (Valle Bavona), on wood of a lying, decayed branch of *Alnus incana*, leg. E. Martini, 25.V.1995 (em-5699) – St. Antonino, Copera, on bark of a lying, rather hard twig of *Fagus sylvatica*, leg. E. Zenone, 5.XI.1998 (em-6873) – Veglia, Val Lavizzara, on wood of a lying, decayed branch of *Tilia cordata*, leg. E. Martini, 4.X.2009 (em-10883)



Fig. 1: Basidiome. Image width = 83 mm [em-12692]



Fig. 2: Basidiome [em-10642]

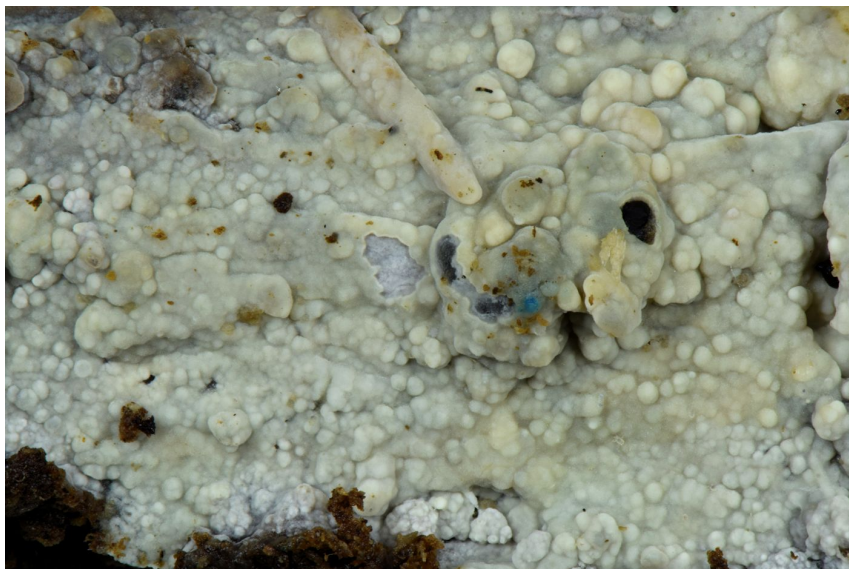


Fig. 3: Tuberculated hymenophore. Image width = 23 mm [em-12228]

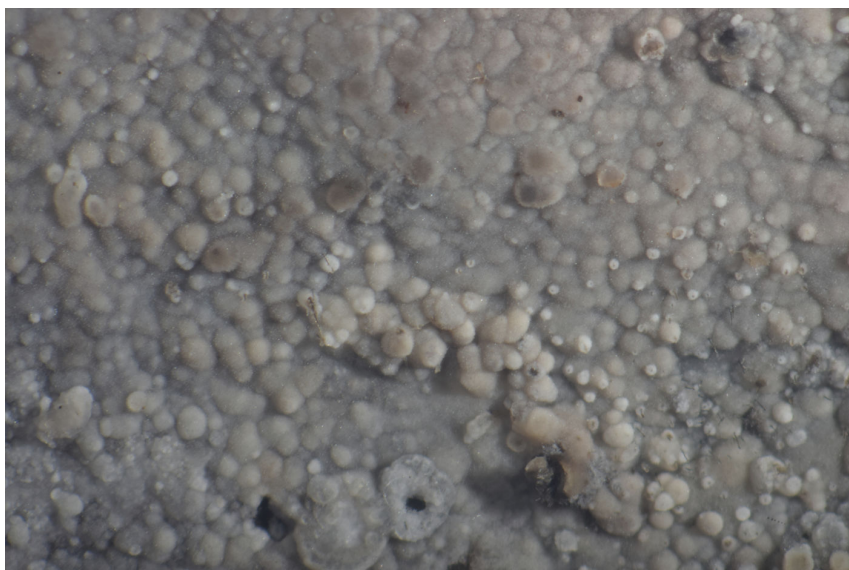


Fig. 4: Detail of the hymenophore. Image width = 9 mm [em-12618]

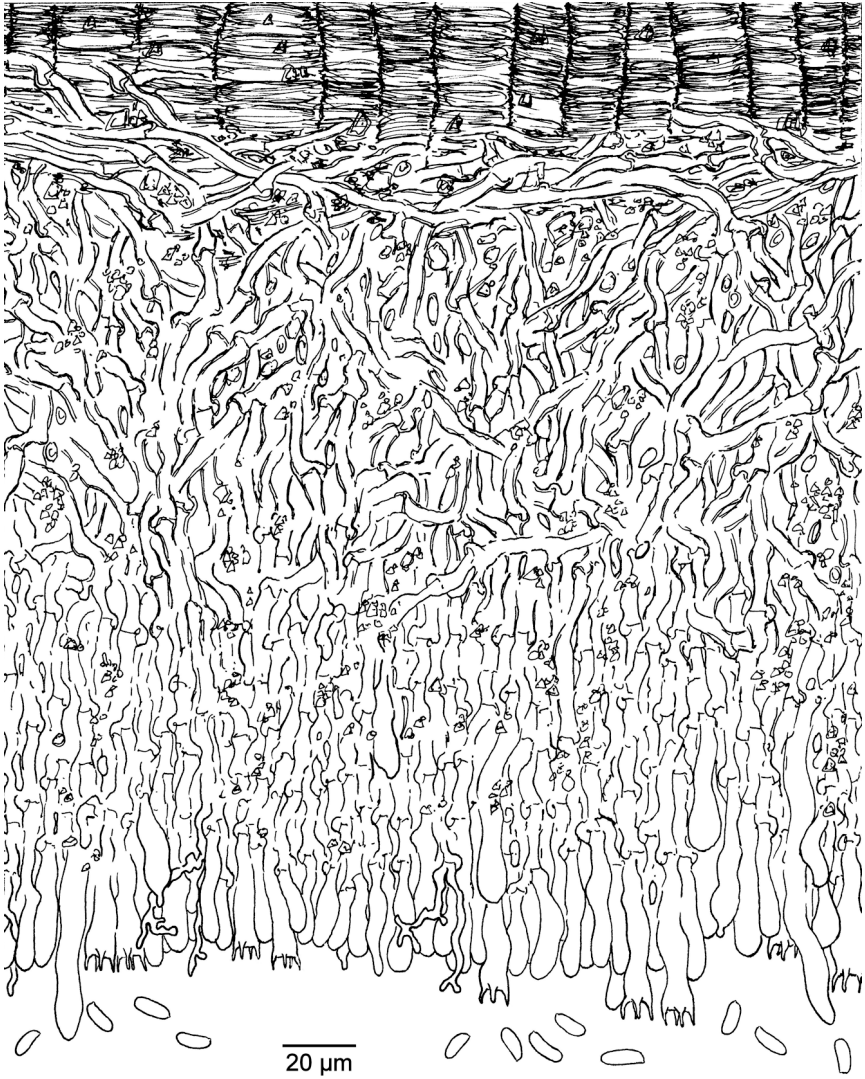


Fig. 5: Vertical section through the basidiome. Bar = 20  $\mu\text{m}$  [em-2561]



Fig. 6: Basidiospores, basidia, hyphidia, and cystidia. Bar = 10 µm [em-2561]

## References

- [1] BERNICCHIA, A. AND GORJÓN, S.P. (2010). ‘*Corticaceae* s. l.’ *Fungi Europaei*, 12: 1008 p.
- [2] BRESADOLA, G. (1905). ‘Hymenomyces novi vel minus cogniti’. *Annales Mycologici*, 3 (2): 159–164. URL: <http://www.cybertruffle.org.uk/cyberliber/59685/0003/002/0159.htm>
- [3] BRINKMANN, W. (1900). *Westfälische Pilze in getrockneten Exemplaren*. Dresden
- [4] DONK, M.A. (1957). ‘Notes on resupinate Hymenomyces IV’. *Fungus*, 27 (1-4): 1–29
- [5] PFISTER, D.H. (1985). ‘A bibliographic account of Exsiccatae containing fungi’. *Mycotaxon*, 23: 1–139. URL: <http://www.cybertruffle.org.uk/cyberliber/59575/index.htm>



# Excerpts from *Crusts & Jells*

Descriptions and reports of resupinate Aphyllophorales and Heterobasidiomycetes

Authored and published by

ELIA MARTINI  
Via ai Ciòss 21  
CH-6676 Bignasco  
Switzerland

Email: [emart@aphyllo.net](mailto:emart@aphyllo.net)  
<http://www.aphyllo.net>



Issue № 9:

*Hyphoderma roseocremeum*

Released on: 27<sup>th</sup> April, 2016

© E. Martini

This work is licensed under a [Creative Commons Attribution 4.0 International License \(CC BY 4.0\)](https://creativecommons.org/licenses/by/4.0/)

