

№ 96

Brevicellicium exile

Figures 1–5

Corticium exile A.B. Jacks. 1950 [4 : 721] \equiv *Brevicellicium exile* (A.B. Jacks.) K.H. Larss. & Hjortstam 1978 [2 : 118]

Basidiome effused, adherent, at first porulose, discontinuous, then continuous and smooth, about 20 μm thick, white, cream when dry.

Margin indistinct.

Hyphal system monomitic; all hyphae with fibulate primary septa.

Subhymenial hyphae indistinct, agglutinate, frequently branched, irregular, 2–3 μm in diam., often swollen or triangular at ramifications up to 8 μm , thin-walled, smooth, hyaline.

Subicular hyphae few, almost distinct, regular, 2–3 μm in diam., smooth, thin-walled, hyaline.

Cystidia absent.

Basidia more or less cylindrical, slightly compressed in the middle, (7.5) 9–12 (13) \times (3.5) 4–4.5 μm , hyaline; 4 sterigmata up to 3.5 μm long.

Basidiospores ellipsoid with a flattening adaxial side, sometimes slightly tapering toward the base or somewhat subcylindrical, (3) 3.5–4.5 (4.8) \times (1.8) 2–2.5 μm , Q = 1.6–2, smooth, thin-walled, hyaline, guttulate; apiculus distinct.

Chemical reactions: IKI–; CB–.

Incrustation: absent.

Specimens examined

FRANCE — **Jura** – Prénovel, Bois de la Joux Derrière, Route de la Faicle, on wood of a lying, strongly decayed branch of a coniferous tree, leg. E. Martini, 10.IX.2012 (em-11909)



Fig. 1: Dried basidiome. Image width = 9 mm [em-11909]



Fig. 2: Dried basidiome. Image width = 90 mm [em-11909]

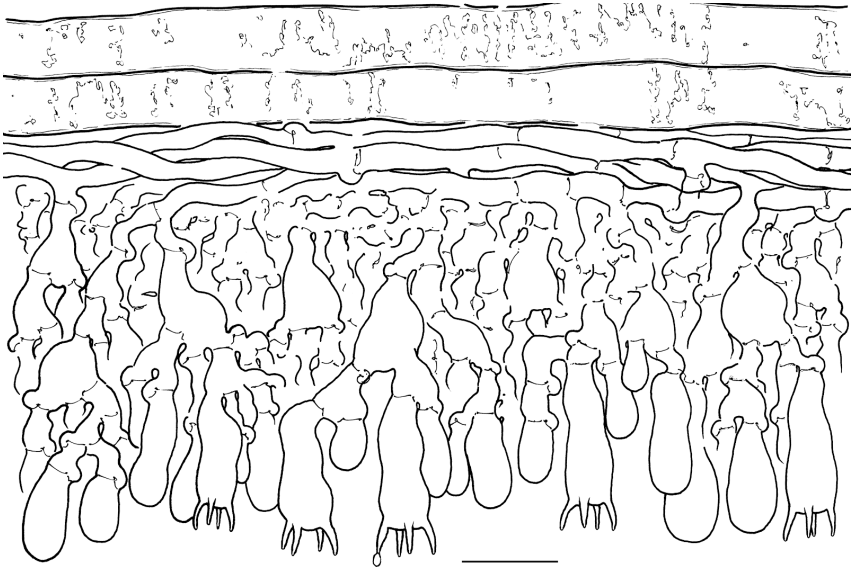


Fig. 3: Vertical section through the basidiome and substrate. Bar = 10 μm
[em-11909]

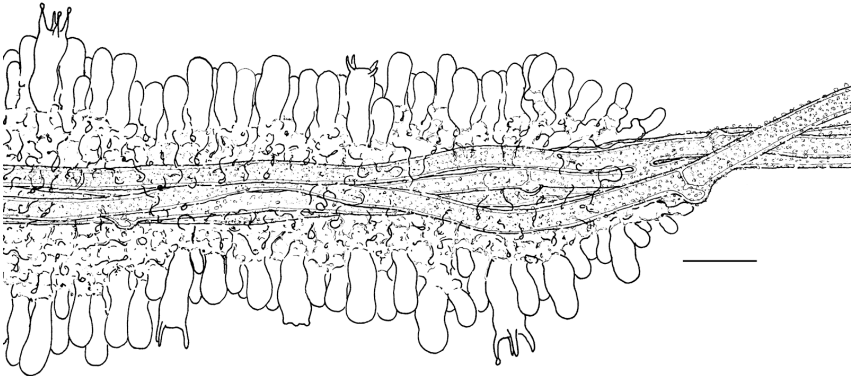


Fig. 4: Section of a thin thread of some alien hyphae (*Amphinema byssoides?*)
overgrown by the basidiome. Bar = 10 μm [em-11909]



Fig. 5: Basidiospores. Bar = 5 μm [em-11909]

References

- [1] BERNICCHIA, A. AND GORJÓN, S.P. (2010). '*Corticiaceae* s. l.' *Fungi Europaei*, 12: 1008 p.
- [2] HJORTSTAM, K. AND LARSSON, K.-H. (1978). 'Notes on *Corticiaceae* (Basidiomycetes) II'. *Mycotaxon*, 7 (1): 117–124. URL: <http://www.cybertruffle.org.uk/cyberliber/59575/index.htm>
- [3] HJORTSTAM, K., LARSSON, K.-H. AND RYVARDEN, L. (1988). *The Corticiaceae of North Europe, vol. 8: Phlebiella - Ypsilonididium*. Oslo, pp. 1450–1631
- [4] JACKSON, H.S. (1950). 'Studies of canadian *Thelephoraceae* VII. Some new species of *Corticium* sect. *Athele*'. *Canadian Journal of Research. Sect. C, botanical sciences*, 28 (6): 716–725. DOI: <http://dx.doi.org/10.1139/cjr50c-045>
- [5] TELLERÍA, M.T. AND MELO, I. (1995). 'Aphylophorales resupinatae non poroides, 1. *Acanthobasidium-Cystostereum*'. *Flora Mycologica Iberica*, 1: 223 p.



Excerpts from *Crusts & Jells*

Descriptions and reports of resupinate Aphyllophorales and Heterobasidiomycetes

Authored and published by

ELIA MARTINI
Via ai Ciòss 21
CH-6676 Bignasco
Switzerland

Email: emart@aphyllo.net
<http://www.aphyllo.net>



Issue № 96:

Brevicellicium exile

Released on: 27th April, 2016

© E. Martini

This work is licensed under a [Creative Commons Attribution 4.0 International License \(CC BY 4.0\)](https://creativecommons.org/licenses/by/4.0/)

