

Hyphoderma probatum

Figures 1–4

Peniophora probata H.S. Jacks. 1948 [1 : 134] \equiv *Hyphoderma probatum* (H.S. Jacks.) Jülich 1974 [2 : 80]

Basidiome effused, somewhat subceraceous or submembranaceous, up to 0.2 mm thick.

Hymenophore smooth, slightly crustose when dry, creamish to pale yellow, in spots pale ochre.

Subiculum slightly differentiated, more ceraceous and differently colored, pale ochre.

Margin more or less abrupt or shortly thinning out, porulose to pruinose.

Hyphal system monomitic, all hyphae with fibulate primary septa. Subhymenial hyphae sinuose, more or less distinct, 2–3 (4) μm , thin-walled, hyaline. Subicular hyphae more or less indistinct, irregular, (2) 4–8 (10) μm , mostly thin-walled, sometimes with thickening wall, hyaline.

Cystidia (leptocystidia) ventricose, more or less tapering toward the apex, normally stalked, 50–70 (80) \times 9–13 μm , sometimes with a transverse septum and collapsed at apex, thin-walled [with thickening wall in lit.], hyaline.

Basidia narrowly clavate, 30–40 \times 5.5–6.5 μm , 4-sterigmata up to 4 μm long.

Basidiospores ellipsoid, 4.2–5 (5.5) \times 2.2–3 μm , smooth, thin-walled, hyaline.

Chemical reactions: IKI–; CB–.

Specimens examined

GERMANY – Nationalpark Bayerischer Wald, Mittelsteighütte, on lying, decayed wood of a coniferous tree, leg. F. Dämmrich, 13.VI.2008 (FD 9022, em-10523)



Fig. 1: Dried basidiome. Image width = 22 mm [em-10523]



Fig. 2: Dried basidiome. Image width = 21 mm [em-10523]



Fig. 3: Basidia, cystidia, subhymenial and subicular hyphae. Bar = 10 μ m [em-10523]

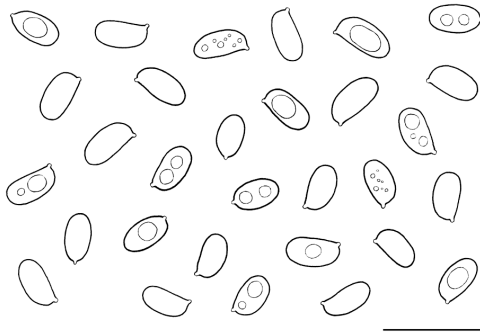


Fig. 4: Basidiospores. Bar = 10 μ m [em-10523]

References

- [1] JACKSON, H.S. (1948). 'Studies of canadian *Thelephoraceae* I. Some new species of *Peniophora*'. *Canadian Journal of Research. Sect. C, botanical sciences*, 26 (2): 128–139. DOI: <http://dx.doi.org/10.1139/cjr48c-013>
- [2] JÜLICH, W. (1974). 'The genera of the *Hyphodermoideae*'. *Persoonia*, 8 (1): 59–97
- [3] JÜLICH, W. AND STALPERS, J.A. (1980). *The resupinate non poroid Aphyllophorales of the temperate northern hemisphere*. Amsterdam. 335 p.
- [4] OSTROW, H. AND DÄMMRICH, F. (2010). 'Corticioide Basidiomyceten in Deutschland'. *Zeitschrift für Mykologie*, 76 (2): 177–210
- [5] SLYSH, A.R. (1960). 'The genus *Peniophora* in New York state and adjacent regions'. *Technical Publication / State College of Forestry at Syracuse University*, 83: 1–95



Excerpts from *Crusts & Fells*

Descriptions and reports of resupinate Aphyllophorales and Heterobasidiomycetes

Authored and published by

ELIA MARTINI
Via ai Ciöss 21
CH-6676 Bignasco
Switzerland

Email: emart@aphyllo.net
<http://www.aphyllo.net>



Issue № 85:

Hyphoderma probatum

in collaboration with Frank Dämmrich

Released on: 27th April, 2016

© E. Martini

This work is licensed under a [Creative Commons Attribution 4.0 International License \(CC BY 4.0\)](https://creativecommons.org/licenses/by/4.0/)

