

№ 81

Botryobasidium rubiginosum

Figures 1–7

Sporotrichum rubiginosum Fr. 1821 [1 : 417] ≡ *Physospora rubiginosa* (Fr.) Fr. 1849 [2 : 2: 495] ≡ *Rhinotrichum rubiginosum* (Fr.) Sumst. 1911 [10 : 47] ≡ *Oidium rubiginosum* (Fr.) Linder 1942 [5 : 191] ≡ *Haplotrichum rubiginosum* (Fr.) Hol.-Jech. 1976 [3 : 4] ≡ *Botryobasidium rubiginosum* (Fr.) Rossman & W.C. Allen 2016 [9 : 6]
= *Botryobasidium robustius* Pouzar & Hol.-Jech. 1967 [7 : 69]

Basidiome effused, reticulated to porulose, discontinuous to almost continuous and smooth, whitish, up to 0.1 mm thick.

Subiculum thin, soon yellowish brown.

Margin indistinct.

Hyphal system monomitic; all hyphae simple-septated; subhymenial (3) 4.5–7 (8) μm in diam., with thin wall, hyaline; subicular 6–10 μm wide, with thickening wall, subhyaline to yellowish.

Cystidia absent.

Basidia short clavate to short cylindrical or utriform, 8–16 \times 8–10 μm ; with 6 sterigmata up to 3 μm long.

Basidiospores ellipsoid to subamygdaliform, 7–10 \times 3–4.5 μm , smooth, thin-walled, hyaline.

Anamorphic state: *Haplotrichum rubiginosum*; well developed and growing mixed or separate at the margin of the basidiome.

Colonies effused, hypochnoid, soft, loose, up to 0.7 (1) mm thick, yellowish red to rusty brown.

Conidiophores hyphoid, often very long, 8–11 μm in diam., irregularly branched and often anastomosed toward the base, with thickening to thick wall, yellowish brown.

Conidiogenous cells distal or lateral, cylindrical to clavate or obovoid, with sparse denticles, these up to 6 (7) μm long and 2–4 μm in diam., with thickening wall, subhyaline to yellowish brown.

Conidia subglobose to ellipsoid, 20–30×17–22 µm, smooth, with thickening to thick wall, subhyaline to yellowish brown, with granulose-guttulate content.

Chemical reactions: all elements cyanophilous excepting dark coloured ones; IKI–

Incrustation: none.

Specimens examined

FRANCE — Isère – Péage de Roussillon, RN de la Platière, on wood of a lying, decayed trunk of *Populus nigra*, leg. B. Rivoire, 14.VIII.2014 (LY BR 5572, em-12257)

References

- [1] FRIES, E.M. (1821). *Systema mycologicum*. Lundae. 2 vol. in 3 t. (520, 620 p.) URL: <http://www.biodiversitylibrary.org/bibliography/5378#/summary>
- [2] FRIES, E.M. (1849). *Summa vegetabilium Scandinaviae*. Uppsala. 2 vol. (572 p.) DOI: <http://dx.doi.org/10.5962/bhl.title.47008>. URL: <http://www.biodiversitylibrary.org/bibliography/47008#/summary>
- [3] HOLUBOVÁ-JECHOVÁ, V. (1976). ‘*Haplotrichum* Link instead of *Oidium* Link, a necessary nomenclatural change’. *Česká Mykologie*, 30 (1): 3–4. URL: <http://www.czechmycology.org/czech-mycology-content.php>
- [4] LANGER, G. (1994). ‘Die Gattung *Botryobasidium* Donk (*Corticaceae*, Basidiomycetes)’. *Bibliotheca Mycologica*, 158: 1–459
- [5] LINDER, D.H. (1942). ‘A contribution towards a monograph of the genus *Oidium* (fungi imperfecti)’. *Lloydia*, 5 (3): 165–207
- [6] MUNTAÑOLA-CVETKOVIĆ, M. AND GÓMEZ-BOLEA, A. (1999). ‘Three *Haplotrichum* species recently found in Catalonia’. *Revista Catalana de Micologia*, 22: 15–22. URL: http://www.micocat.org/UNCINULA09/rcmPdf/RCM22_1999/15-22_Three_Haplotrichum_species_recently_found_Catalonia.pdf
- [7] POUZAR, Z. AND HOLUBOVÁ-JECHOVÁ, V. (1967). ‘*Botryobasidium robustior* sp. nov., a perfect state of *Oidium rubiginosum* (Fr.) Linder’. *Česká Mykologie*, 21: 69–73, pl. 9–10. URL: <http://www.czechmycology.org/czech-mycology-content.php>
- [8] RIVOIRE, B. AND MARTINI, E. (2014). ‘Notule 5 - *Botryobasidium robustius* rare et spectaculaire’. *Rhizomorphes*, (14): 7–8. URL: <http://www.aphyllophiles.org/fr/rhizomorphes-fr>
- [9] ROSSMAN, A.Y., ALLEN, W.C. AND CASTLEBURY, L.A. (2016). ‘New combinations of plant-associated fungi resulting from the change to one name for fungi’. *IMA Fungus*, 7 (1): 1–7. DOI: <http://dx.doi.org/10.5598/imafungus.2016.07.01.01>
- [10] SUMSTINE, D.R. (1911). ‘Studies in North American Hyphomycetes, I. The genera *Rhinotrichum* and *Olpitrichum*’. *Mycologia*, 3 (2): 45–56. DOI: <http://dx.doi.org/10.2307/3753557>. URL: <http://www.cybertruffle.org.uk/cyberliber/59350/index.htm>

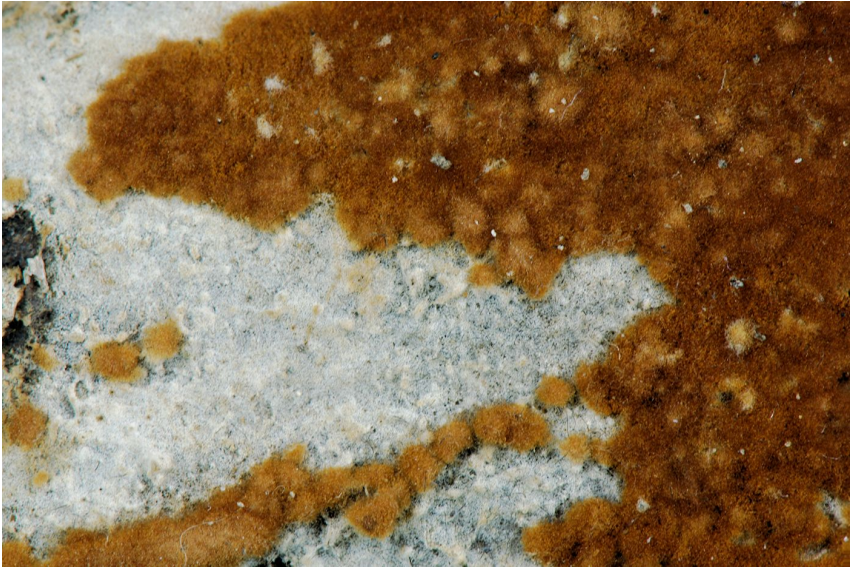


Fig. 1: Dried basidiome (teleo- and anamorph). Image width = 26 mm [em-12257]



Fig. 2: Dried basidiome (teleo- and anamorph). Image width = 9 mm [em-12257]



Fig. 3: Dried basidiome (teleo- and anamorph). Image width = 9 mm [em-12257]

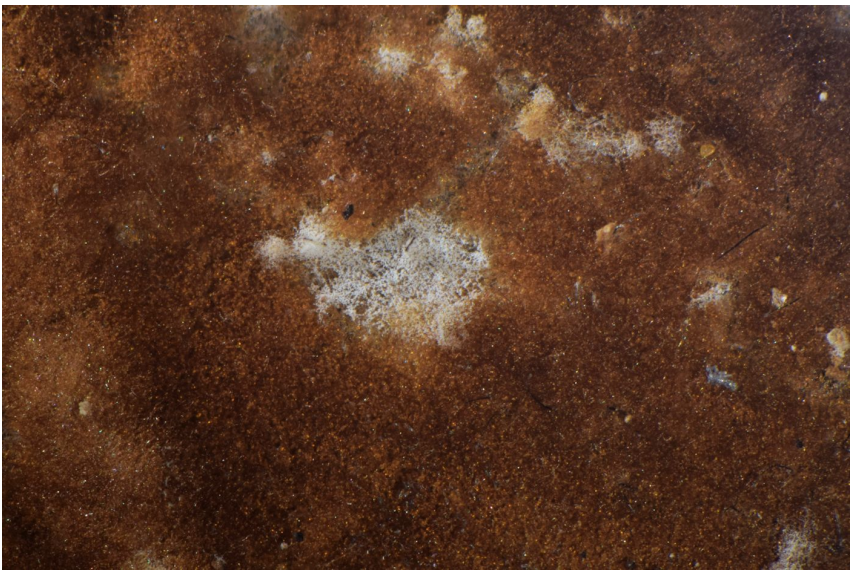


Fig. 4: In the middle the teleomorph, all around the anamorph (dried specimen). Image width = 9 mm [em-12257]



Fig. 5: Anamorph. Bar = 20 μm [em-12257]

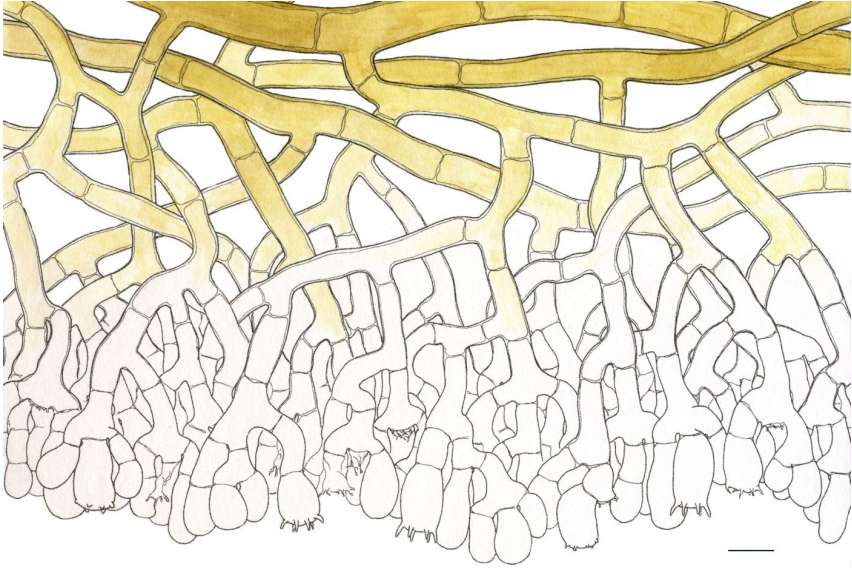


Fig. 6: Basidia, subhymental and subicular hyphae. Bar = 10 μm [em-12257]

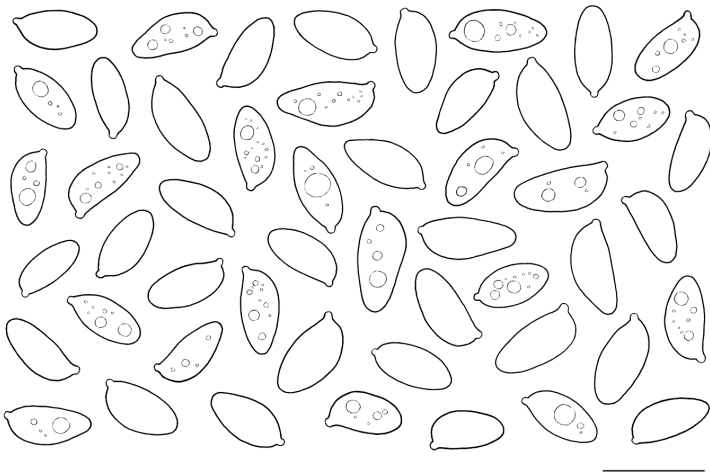


Fig. 7: Basidiospores. Bar = 10 μm [em-12257]



Excerpts from *Crusts & Jells*

Descriptions and reports of resupinate Aphylophorales and Heterobasidiomycetes

Authored and published by

ELIA MARTINI
Via ai Ciòss 21
CH-6676 Bignasco
Switzerland

Email: emart@aphyllo.net
<http://www.aphyllo.net>



Issue № 81:

Botryobasidium rubiginosum

in collaboration with Bernard Rivoire

Released on: 27th April, 2016

© E. Martini

This work is licensed under a [Creative Commons Attribution 4.0 International License \(CC BY 4.0\)](https://creativecommons.org/licenses/by/4.0/)

