

*Odonticium romellii*

Figures 1–4

*Odontia romellii* S. Lundell 1958 [2 : 124]  $\equiv$  *Odonticium romellii* (S. Lundell) Parmasto 1968 [4 : 126]

**Basidiome** effused, loosely adherent, built up by thronged aculei over a loose, hypochnoid subiculum, cream to pale yellow when dry.

**Aculei** crowded, single to conrescent, slender, conical to cylindrical or flattening, subceraceous (rigid on squashing), up to 0.3 (0.5) mm long; apex somewhat fimbriate.

**Subiculum** loose, porulose, discontinuous, up to 50  $\mu$ m thick.

**Margin** indistinct, abrupt or shortly thinning out, tufted.

**Hyphal system** monomitic; all hyphae with simple septa.

**Subhymenial hyphae** hyphae in candelabrams, 2.5–5  $\mu$ m, with thickening or thick walls, hyaline.

**Tramal hyphae** parallelly arranged, infrequently branched, often with constrictions, 2.5–5 (6.5)  $\mu$ m, thick-walled excepting the thin-walled, obtuse apex, hyaline, with thin septa often at some distance from branching, sometimes with simple anastomoses.

**Subicular hyphae** hyphae like tramal ones or slightly thinner.

**Cystidia** absent.

**Basidia** clavate to subcylindrical, 10–16  $\times$  3.5–4.5 (5)  $\mu$ m, normally thick-walled at the base, the wall sometimes stratified and irregularly shaped (as a sheath); 4 sterigmata up to 2.5  $\mu$ m long.

**Basidiospores** cylindrical to subballantoid, 4–5.5  $\times$  1–1.5 (1.7)  $\mu$ m, smooth, thin-walled, hyaline, irregularly guttulate, sometimes glued together.

**Chemical reactions:** IKI–; CB–

**Incrustation:** none



Fig. 1: Basidiome [LY BR 4925] ©Photo: Bernard Rivoire

## Specimens examined

FRANCE — Isère – Séchilienne, tourbière du Luitel, on lying, decayed wood of *Picea abies*, leg. B. Rivoire, 2013 (LY BR 4925, GT 13020, em-11996)

## References

- [1] DÄMON, W. (1998). 'Corticioide Pilze Österreichs, 2'. *Österreichische Zeitschrift für Pilzkunde*, 7: 135–189 + 1 t.
- [2] ERIKSSON, J. (1958). 'Studies in the Heterobasidiomycetes and Homobasidiomycetes Aphyllophorales of Muddus National Park in north Sweden'. *Symbolae Botanicae Upsalienses*, 16 (1): 1–172
- [3] ERIKSSON, J., HJORTSTAM, K. AND RYVARDEN, L. (1978). *The Corticiaceae of North Europe, vol. 5: Mycoaciella - Phanerochaete*. Oslo, pp. 889–1047
- [4] PARMASO, E. (1968). *Conspectus Systematis Corticiacearum*. Tartu. 261 p.
- [5] TRICHIES, G., RIVOIRE, B. AND MARTINI, E. (2013). 'Notule 3 - *Odonticium romellii* un espèce laponne présente en France'. *Rhizomorphes*, ( 11): 3–5. URL: <http://www.aphyllophiles.org/fr/rhizomorphes-fr>



Fig. 2: Dried basidiome. Image width = 9 mm [em-11996]

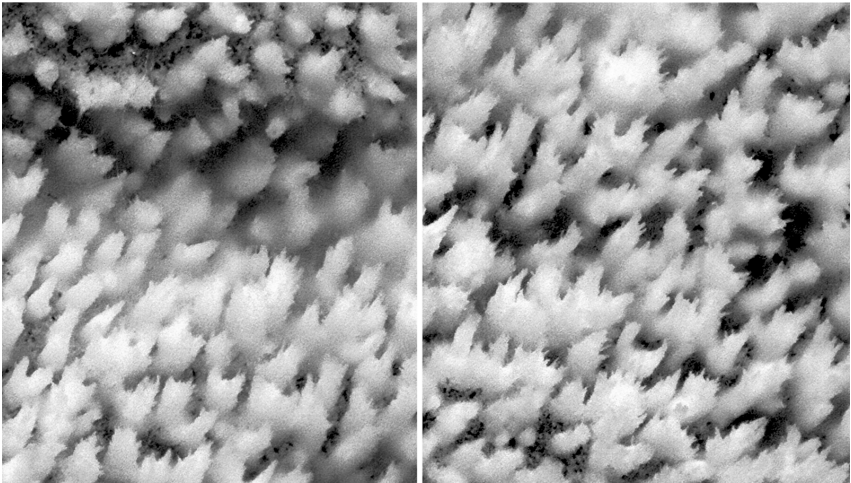


Fig. 3: Detail of the hymenophore [GT 13020] ©Photo: Gérard Trichies

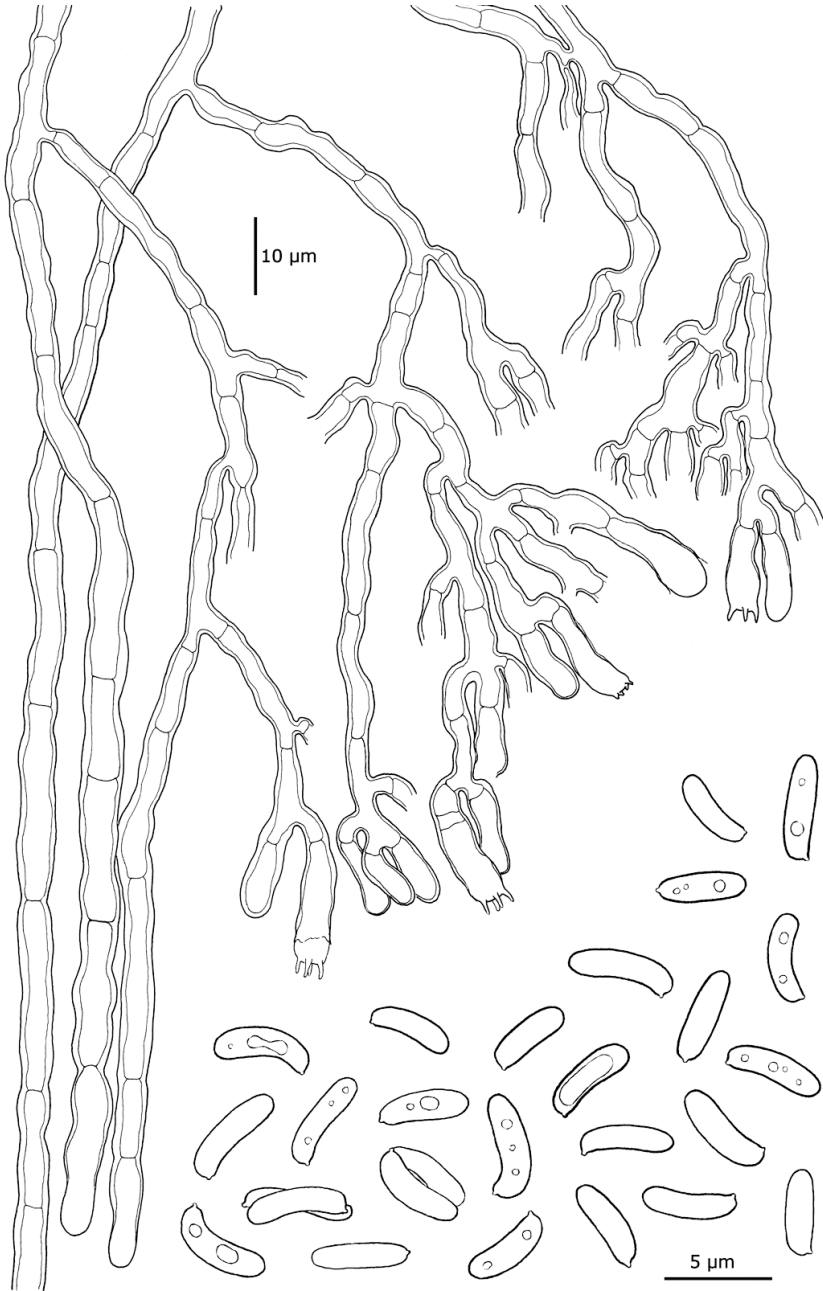


Fig. 4: Hyphae, basidia and basidiospores [em-11996]



# Excerpts from *Crusts & Jells*

Descriptions and reports of resupinate Aphyllophorales and Heterobasidiomycetes

Authored and published by

ELIA MARTINI  
Via ai Ciòss 21  
CH-6676 Bignasco  
Switzerland

Email: [emart@aphyllo.net](mailto:emart@aphyllo.net)  
<http://www.aphyllo.net>



Issue № 76:

*Odonticium romellii*

in collaboration with Bernard Rivoire and Gérard Trichies

Released on: 27<sup>th</sup> April, 2016

© E. Martini

This work is licensed under a [Creative Commons Attribution 4.0 International License](https://creativecommons.org/licenses/by/4.0/) (CC BY 4.0)

