

*Amylocorticium canadense*

Figures 1–7

*Corticium canadense* Burt 1926 [1 : 290]  $\equiv$  *Amylocorticium canadense* (Burt) J. Erikss. & Weresub 1974 [3 : [1]]

= *Corticium sulphureomarginatum* Litsch. 1934 [4 : 52] teste Eriksson and Ryvarden [2]

**Basidiome** effused, adherent, soft to submembranaceous, up to 0.5 mm thick.

**Hymenial surface** smooth, almost easily detachable in small pieces from the subiculum, cream to very pale yellow, immediately darkening when treated with KOH, sometimes slightly cracked on drying.

**Context** (and subiculum) often stratified, yellowish-brown, with darker layers, tomentose or felted, almost black when treated with KOH.

**Margin** determinate, abrupt or thinning out, smooth to finely byssoid, yellow to yellowish-brown, lighter to concolorous with the subiculum.

**Hyphal system** monomitic, all hyphae with fibulate septa; subhymenial ones 2.5–3.5 (4)  $\mu\text{m}$  in diam, vertically oriented, compactly arranged, thin-walled, hyaline; subicular ones loosely intertwined, regular, 3.5–4.5  $\mu\text{m}$ , with thickening wall, hyaline to yellowish.

**Cystidia** absent.

**Basidia** narrowly clavate to subcylindrical, (15) 20–25 $\times$ 4–5  $\mu\text{m}$ , hyaline; 4 sterigmata up to 4  $\mu\text{m}$  long.

**Basidiospores** narrowly ellipsoid to cylindrical, in side view often slightly bent, (4.5) 5–7 (7.5) $\times$ 1.6–2.5  $\mu\text{m}$ , Q = 2.5–3.5, thin-walled, hyaline or pale yellowish.

**Chemical reactions:** IKI: spores weakly to strongly amyloid; CB–

**Incrustation:** deep subicular hyphae often coarsely encrusted by yellow-greenish or brownish granular or resinous matter.

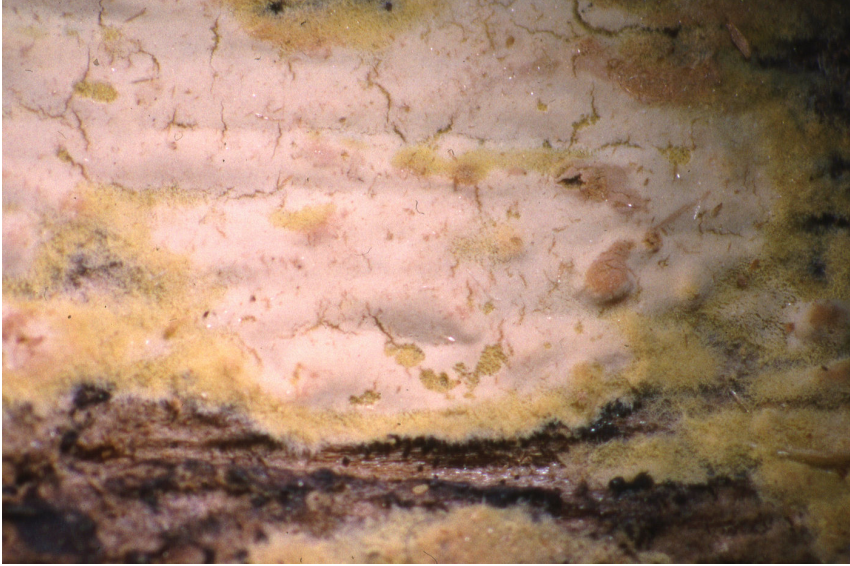


Fig. 1: Dried basidiome. Image width = 14 mm [em-1525]

## Voucher specimens

FRANCE — **Isère** – Autrans, Gève, on wood of a lying, decayed branch of a coniferous tree, leg. E. Martini, 11.IX.2014 (em-12334) — **Var** – Brignoles, Camps La Source, on wood of a lying, rather hard branch of *Pinus halepensis*, leg. F. Dämmrich, 14.XI.2013 (em-12030) – Hyères, Île de Porquerolle, on wood of a hanging, rather hard trunk of *Pinus halepensis*, leg. E. Martini, 13.XI.2013 (em-12046)

QUEBEC – Gatineau National Park, Kingsmere, on bark, leg. N. Hallenberg, 23.VII.1982 (N. Hallenberg 6160, em-1525)

SWITZERLAND — **Ticino** – Bolle di Magadino, on wood on lying build. timber of a coniferous tree, leg. E. Zenone, 6.XI.1987 (em-1327, LUG 6472) – Gordevio, Saleggio, on wood of a lying, decayed branch of *Pinus sylvestris*, leg. E. Zenone, 22.VI.1998 (em-6600) – Malvaglia, Piantaglione, on wood of a lying, rather hard trunk of *Pinus sylvestris*, leg. E. Zenone, 19.XI.1998 (em-6889) – St. Antonino, Copera, on wood of a lying, rather hard trunk of *Pinus nigra*, leg. E. Zenone, 18.VI.1997 (em-6136) – *ibid.*, on wood of a lying, decayed trunk of *Pinus pinaster*, leg. E. Zenone, 19.IX.1998 (em-6726)

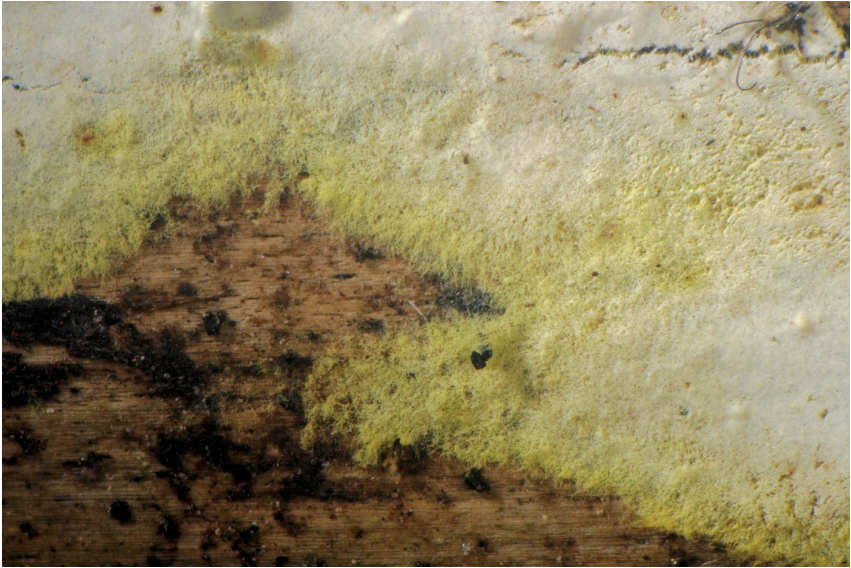


Fig. 2: Basidiome at the margin. Image width = 9 mm [em-12030]



Fig. 3: Basidiome at the margin. Image width = 9 mm [em-12334]

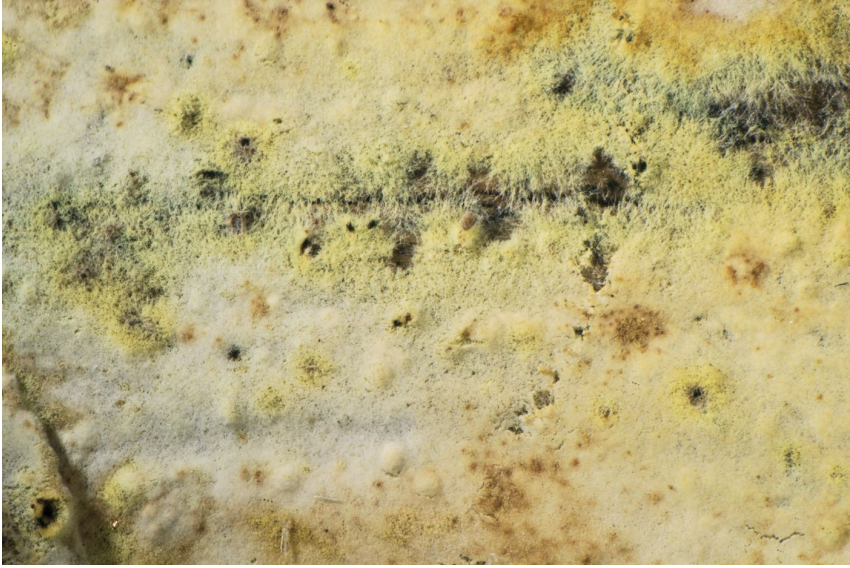


Fig. 4: Detail of the hymenophore. Image width = 91 mm [em-12030]

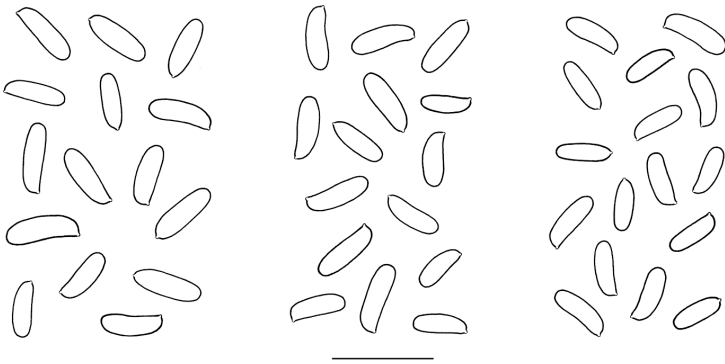


Fig. 5: Basidiospores: from left to right: coll. NH 6160, em-6136, em-1327. Bar = 10  $\mu$ m [em-1327, LUG 6472]



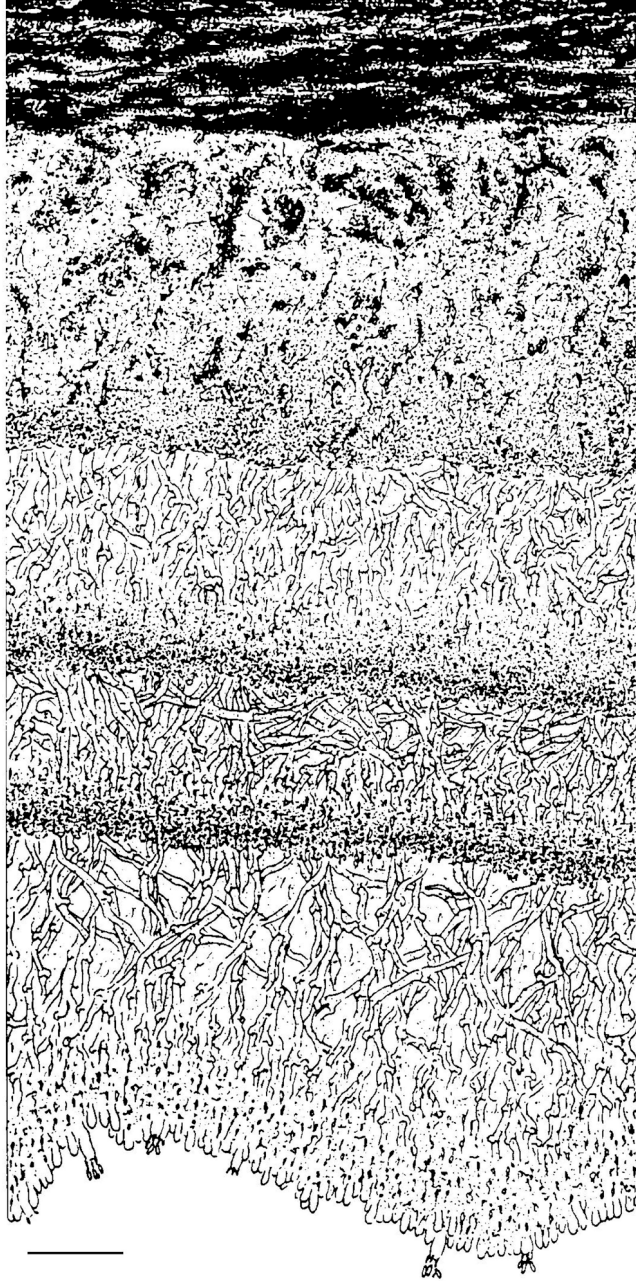


Fig. 6: Vertical section through the basidiome. Bar = 50  $\mu$ m [em-1327, LUG 6472]



Fig. 7: Basidia, subhymenial and contextual hyphae. Bar = 10  $\mu$ m [em-1327, LUG 6472]

## References

- [1] BURT, E.A. (1926). 'The *Thelephoraceae* of North America XV: Conclusion, with supplement and general index'. *Annals of the Missouri Botanical Garden*, 13 (3): 173–354. DOI: <http://dx.doi.org/10.2307/2394065>. URL: <http://www.biodiversitylibrary.org/item/21963#page/197/>
- [2] ERIKSSON, J. AND RYVARDEN, L. (1976). *The Corticiaceae of North Europe, vol. 4: Hyphodermella - Mycoacia*. Oslo, pp. 549–886
- [3] ERIKSSON, J. AND WERESUB, L.K. (1974). 'Amylocorticium canadense (Burt) John Eriksson & Weresub'. *Fungi Canadenses*, ( 45): [2 pp.]
- [4] LITSCHAUER, V. (1934). 'Über zwei neue Corticium-Arten aus Tirol'. *Annales Mycologici*, 32 (1-2): 52–56. URL: <http://www.cybertruffle.org.uk/cyberliber/59685/index.htm>
- [5] LUCCHINI, G., ZENONE, E., MARTINI, E. AND PELLANDINI, W. (1990). 'I macromiceti delle Bolle di Magadino'. *Bollettino della Società Ticinese di Scienze Naturali*, 78: 33–132



# Excerpts from *Crusts & Fells*

Descriptions and reports of resupinate Aphyllophorales and Heterobasidiomycetes

Authored and published by

ELIA MARTINI  
Via ai Ciòss 21  
CH-6676 Bignasco  
Switzerland

Email: [emart@aphyllo.net](mailto:emart@aphyllo.net)  
<http://www.aphyllo.net>



Issue № 6:

*Amylocorticium canadense*

Released on: 27<sup>th</sup> April, 2016

© E. Martini

This work is licensed under a [Creative Commons Attribution 4.0 International License](https://creativecommons.org/licenses/by/4.0/) (CC BY 4.0)

