

*Sistotrema tholliae*

Figures 1–6

*Sistotrema tholliae* Duhem & Schultheis 2013 [1 : 202]

**Basidiome** effused, adherent, subceraceous, up to 50 (80)  $\mu\text{m}$  thick, sometimes almost invisible when dry.

**Hymenophore** pruinose to smooth, very finely porulose and discontinuous when dry, whitish-grey, whitish, cream, often light beige or pale yellow when dry.

**Margin** indistinct, indefinitely thinning out.

**Rhizomorphs** absent.

**Hyphal system** monomitic; all hyphae with fibulate primary septa, 2–5  $\mu\text{m}$ , thin-walled, hyaline, often filled by small drops and irregular-sinuous strands with subhyaline to yellowish oily content; subhymenial hyphae indistinct, richly branched; subicular scanty, often difficult to find, regular, long-celled, not ampullate at the septa.

**Gloeocystidia** rare to frequent, enclosed, irregularly cylindrical, subclavate or slightly ventricose, 20–40 (60)  $\times$  5–8 (10)  $\mu\text{m}$ , thin-walled, subhyaline to yellowish.

**Basidia** uniform, sometimes with an elongated neck, 10–16 (20)  $\times$  3–3.5  $\mu\text{m}$  (top)  $\times$  4.5–5.5 (6.5)  $\mu\text{m}$  (base); with 6 (8) sterigmata up to 3  $\mu\text{m}$  long.

**Basidiospores** ellipsoid, narrowly ellipsoid, suballantoid, sometimes distinctly allantoid or subreniform in side view, 3.5–5 (5.5)  $\times$  (1.5) 1.7–2.3 (2.5)  $\mu\text{m}$ ,  $Q = 1.6$ –2.5 (3), smooth, thin-walled, with oily content, hyaline to pale yellow.

**Chemical reactions:** IKI–, CB–

**Incrustation:** none.

## Voucher specimens

FRANCE — **Pyrénées-Orientales** – Sahorre, route pour le Col de Jou, on wood of a lying, hard branch of a deciduous tree, leg. E. & F. Martini, 28.X.1995 (em-5786)

SWITZERLAND — **Ticino** – Arzo, Perfetta, on wood of a decayed branch of a deciduous tree, leg. E. Martini, 15.X.1994 (em-5599) – Bignasco, on wood of a lying, decayed branch of a deciduous tree, leg. E. Martini, 27.IV.1986 (em-501) – Bolle di Magadino, on wood of a lying, strongly decayed trunk of a deciduous tree, leg. E. Martini, 11.IV.1987 (em-952) – Caveragno, on wood of a lying, decayed branch of a deciduous tree, leg. E. Martini, 1.III.1987 (em-905) – Chiasso, via Soldini, on bark of a twig of *Prunus avium*, leg. F. Delmenico, 3.III.1997 (em-6034) – Cugnasco, Ciossa Antognini, on wood of a lying, strongly decayed trunk of a deciduous tree, leg. E. Martini, 20.IV.1986 (em-486) – Faedo, Rivèra (Valle Bavona), on wood of a lying, hard trunk, leg. E. Martini, 15.XI.1987 (em-1305) – Locarno, Delta, on wood of a lying, decayed branch of a deciduous tree, leg. E. Martini, 13.III.1986 (em-410) – Meride, Scagnora, on *Hypoxylon* sp., leg. E. Martini, 4.III.2007 (em-9716) – Meride, Val Porina, on wood of a lying, decayed trunk of a deciduous tree, leg. E. Martini, 10.III.2007 (em-9760) – Meride, Vallinera, on wood of a lying, rather hard branch of *Fagus sylvatica*, leg. E. Martini, 3.II.2007 (em-9705) – Mondada, Gramusèd (Valle Bavona), on bark of a lying, decayed branch of *Tilia cordata*, leg. E. Martini, 23.III.1996 (em-4159) – *ibid.*, on bark of a lying, decayed branch of *Tilia cordata*, leg. E. Martini, 13.X.2001 (em-7720) – Morbio Superiore, Lattecaldo, on wood of a lying, strongly decayed branch of *Prunus avium*, leg. F. Delmenico, 3.III.2009 (em-12453) – Ritorto, Dréom (Valle Bavona), on wood of a lying, decayed branch of *Tilia cordata*, leg. E. Martini, 30.IV.1989 (em-2326) – *ibid.*, on wood of a lying, strongly decayed branch of *Tilia cordata*, leg. E. Martini, 11.III.1990 (em-2741) – Ritorto, Prèda (Valle Bavona), on bark of a lying, rather hard branch of *Corylus avellana*, leg. E. Martini, 6.VIII.2011 (em-11596) – Riveo, Saleggi, on wood of a lying, decayed branch of a deciduous tree, leg. E. Martini, 26.II.1995 (em-3966) – Sabbione, Caslitt (Valle Bavona), on wood of a lying, decayed trunk of *Tilia cordata*, leg. E. Martini, 1.XII.1991 (em-3046) – Sagno, Pioda, on basidiome of *Bjerkandera adusta*, leg. F. Delmenico, 9.I.2014 (em-12108)

## References

- [1] DUHEM, B. AND SCHULTHEIS, B. (2011). ‘*Sistotrema tholliae* sp. nov.’ *Bulletin de la Société Mycologique de France*, 127 (3-4): 101–211



Fig. 1: Dried basidiome. Image width = 32 mm [em-4159]



Fig. 2: Dried basidiome. Image width = 22 mm [em-2741]

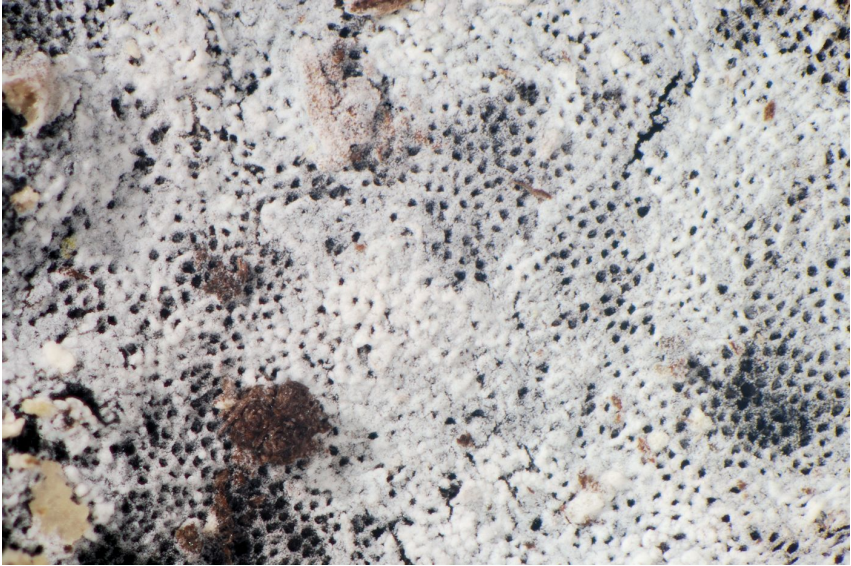


Fig. 3: Basidiome on the dissepiments of a polypore. Image width = 9 mm [em-12108]

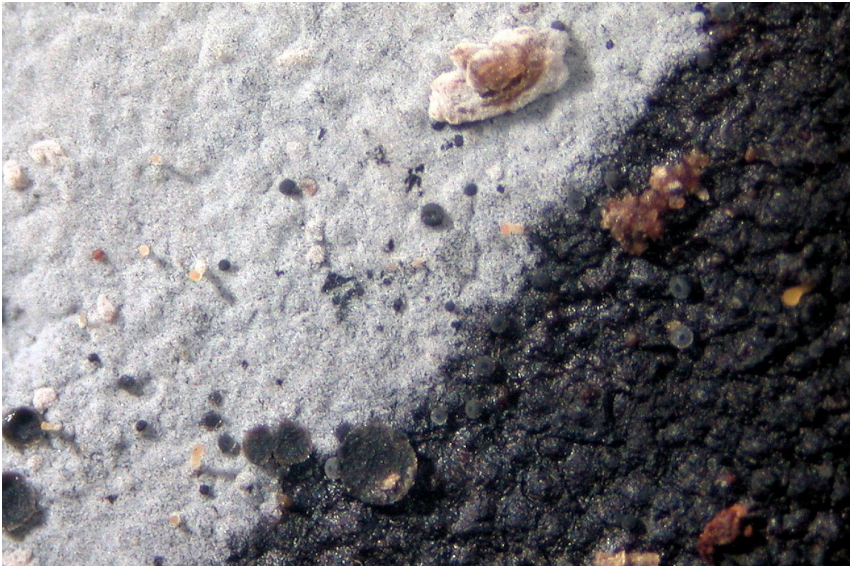


Fig. 4: Basidiome and margin. Image width = 7 mm [em-9716]

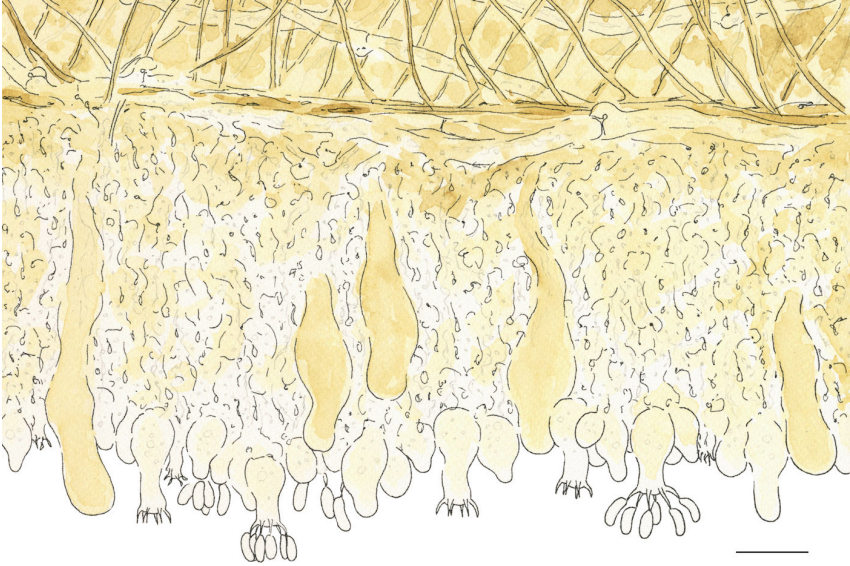


Fig. 5: Vertical section through the basidiome and substrate. Bar = 10  $\mu\text{m}$  [em-3046]

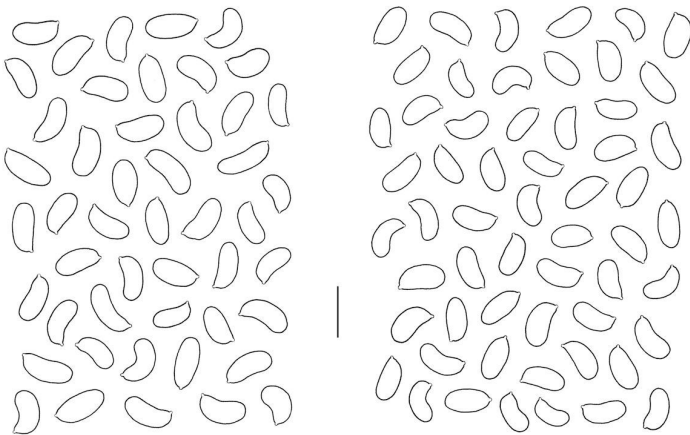


Fig. 6: Basidiospores from spore print; left from em-3966, right from em-4159. Bar = 5  $\mu\text{m}$  [em-3966]



# Excerpts from *Crusts & Jells*

Descriptions and reports of resupinate Aphylophorales and Heterobasidiomycetes

Authored and published by

ELIA MARTINI  
Via ai Ciòss 21  
CH-6676 Bignasco  
Switzerland

Email: [emart@aphyllo.net](mailto:emart@aphyllo.net)  
<http://www.aphyllo.net>



Issue № 56:

*Sistotrema tholliae*

Released on: 27<sup>th</sup> April, 2016

© E. Martini

This work is licensed under a [Creative Commons Attribution 4.0 International License \(CC BY 4.0\)](https://creativecommons.org/licenses/by/4.0/)

