

*Sistotrema coronilla*

Figures 1–9

*Corticium coronilla* Höhn. & Litsch. 1906 [3 : 291]  $\equiv$  *Sistotrema coronilla* (Höhn. & Litsch.) Donk 1935 [4 : 23]

**Basidiome** effused, soon pellicular to submembranaceous, loosely adherent to separable, up to 0.3 mm thick.

**Hymenophore** smooth to granulose or somewhat grandinoid, cream to yellowish.

**Subiculum** indistinct, up to 0.1 mm thick, whitish.

**Margin** abrupt, shortly thinning out or fimbriate with adherent strands.

**Rhizomorphs** present but infrequent, mostly hidden in the subiculum or at the margin, cream to pale yellowish brown, up to 0.2 mm thick.

**Hyphal system** monomitic; all hyphae with fibulate primary septa, normally with refractive yellowish oily content, mostly thin-walled. Subhymenial hyphae 2.5–4  $\mu\text{m}$  diam. Subicular hyphae up to 5  $\mu\text{m}$  wide, sometimes with large clamps or even ampullate at the septa.

**Rhizomorphs** simple, built up by hyphae like the subicular ones, more or less compactly arranged; core not differentiated.

**Cystidia** absent.

**Basidia** urniform, 15–25 $\times$ 3.5–5  $\mu\text{m}$  at the top $\times$ 5–7  $\mu\text{m}$  at the base; (4) 6 sterigmata up to 3 (4)  $\mu\text{m}$  long.

**Basidiospores** ellipsoid, narrowly ellipsoid to subcylindrical, rarely with slightly depressed adaxial side, from (4) 4.2–6 (6.5) $\times$ (2) 2.2–2.8 (3)  $\mu\text{m}$  (ex spore prints of em-3556 and em-4005), to 5–7 (8) $\times$ 2.4–3  $\mu\text{m}$  (ex basidiome of em-403), smooth, thin-walled, hyaline to pale yellow.

**Anamorphic state:** *Burgoa* sp., present at the margin of all specimens seen as sparse to crowded colonies of bulbils, yellowish when young, brown to dark brown at maturity, mostly subglobose, sometimes elongated, up to 80 (100)  $\mu\text{m}$  across, built up by tightly packed angular cells already when young, 8–15 (20)  $\mu\text{m}$  across; wall 0.5–1 (2)  $\mu\text{m}$  thick, yellow to ochraceous; content granular, oleous, hyaline to pale yellow.

**Chemical reactions:** IKI–; holomorph CB–; walls of bulbils CB+, at least when young and less pigmented

**Incrustation:** abundant in subhymenium, prismatic, rhomboidal, subhyaline to yellowish, about 5 (10) µm across.

## Specimens examined

SWITZERLAND — **Ticino** – Bignasco, Besso, on wood and bark of a lying, hard twig of a deciduous tree, leg. E. Martini, 22.III.1986 (em-403) – Bignasco, Löi, on wood of a lying, decayed trunk of *Tilia cordata*, leg. E. Martini, 12.IX.1993 (em-3556) – Mondada, Gramusèd (Valle Bavona), on wood of a lying, decayed branch of a deciduous tree, leg. E. Martini, 8.IV.1990 (em-2545) – Ritorto, Rivera (Valle Bavona), on bark of a lying, decayed trunk of *Alnus incana*, leg. E. Martini, 25.V.1995 (em-4005)

## References

- [1] DUHEM, B. (2012). 'Etudes morphologiques de plusieurs *Sistotrema* gléocystidiés'. *Bulletin de la Société Mycologique de France*, 128 (1-2): 17–51
- [2] HALLENBERG, N. (1984). 'A taxonomic analysis of the *Sistotrema brinkmannii* complex (*Corticaceae*, Basidiomycetes)'. *Mycotaxon*, 21: 389–411. URL: <http://www.cybertruffle.org.uk/cyberliber/59575/index.htm>
- [3] HÖHNEL, F.X.R. VON AND LITSCHAUER, V. (1906). 'Revision der Corticieen in Dr. J.Schröters 'Pilze Schlesiens' nach seinen Herbarexemplaren'. *Annales Mycologici*, 4 (3): 288–294. URL: <http://www.cybertruffle.org.uk/cyberliber/59685/index.htm>
- [4] ROGERS, D.P. (1935). 'Notes on the lower Basidiomycetes'. *University of Iowa Studies In Natural History*, 17 (1): 1–43

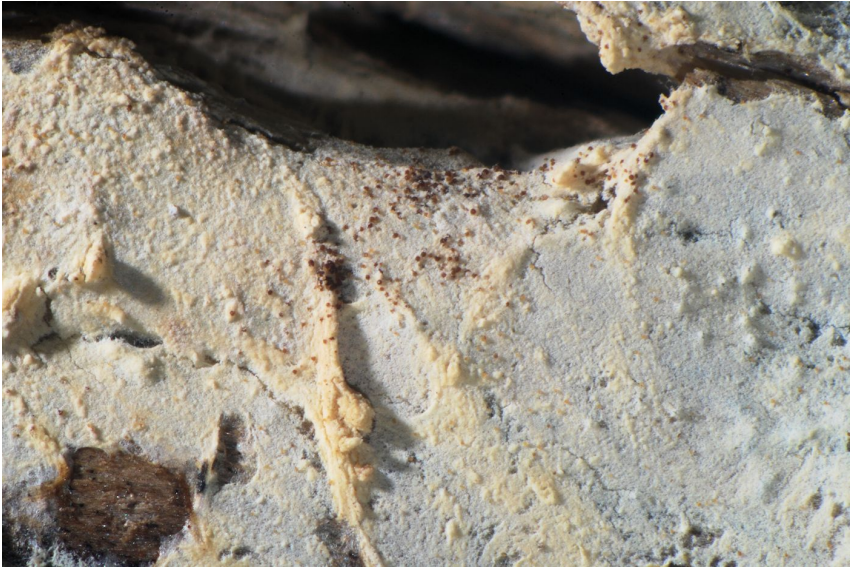


Fig. 1: Dried basidiome with bulbils on surface. Image width = 9 mm [em-4005]



Fig. 2: Dried basidiome at the margin. Image width = 9 mm [em-3556]



Fig. 3: Dried basidiome with bulbils at the margin. Image width = 9 mm [em-3556]



Fig. 4: Dried basidiome at the margin. Image width = 9 mm [em-3556]

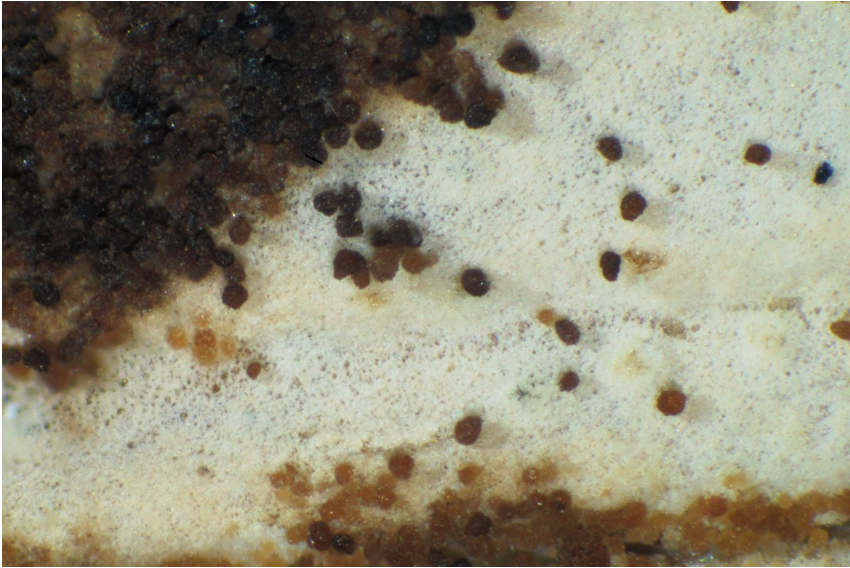


Fig. 5: Bulbils on surface. Image width = 4.5 mm [em-2545]

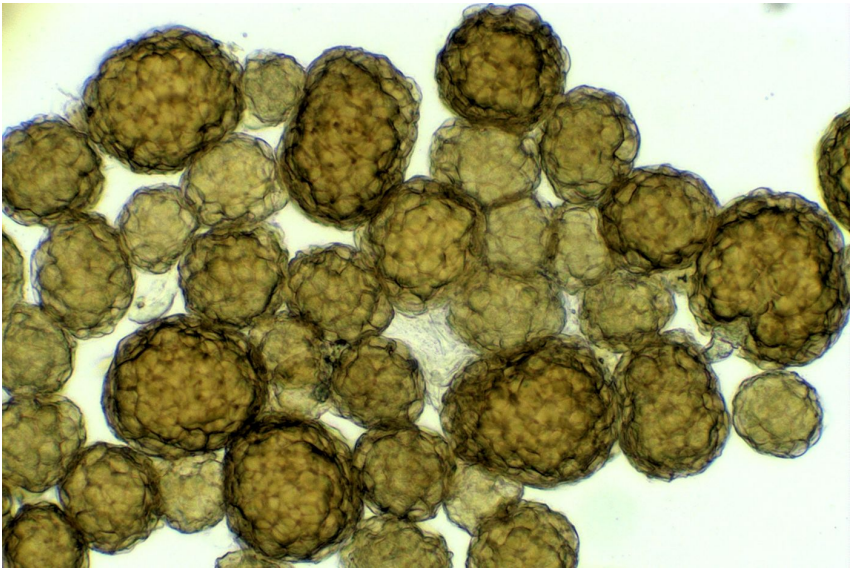


Fig. 6: Bulbils in KOH [em-3556]



Fig. 7: Basidia, subhymenial and subicular hyphae. Bar = 10  $\mu$ m [em-3556]

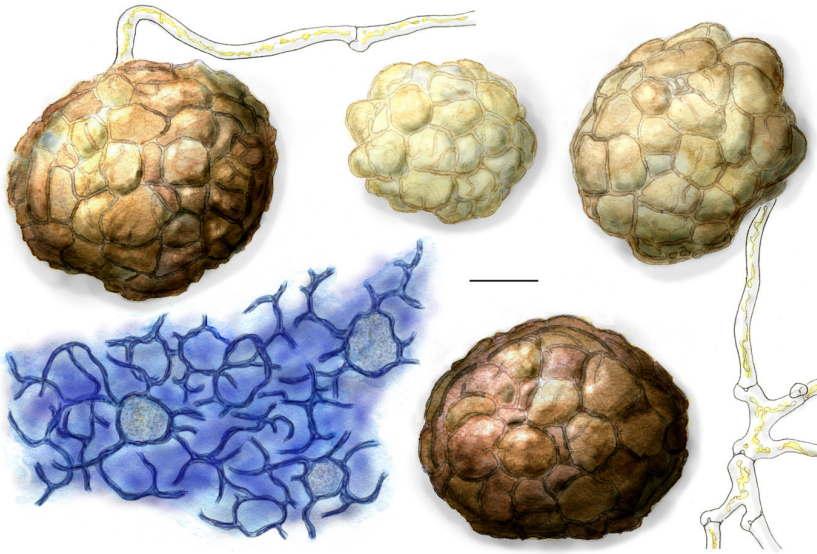


Fig. 8: Bulbils; lower left squashed in CB. Bar = 20  $\mu$ m [em-3556]

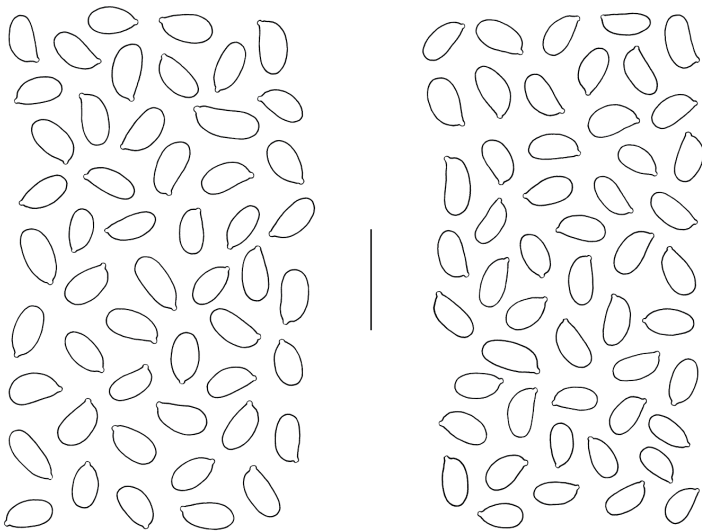


Fig. 9: Basidiospores, left: coll. em-4005, right: coll. em-3556. Bar = 10  $\mu$ m [em-3556]



# Excerpts from *Crusts & Jells*

Descriptions and reports of resupinate Aphyllophorales and Heterobasidiomycetes

Authored and published by

ELIA MARTINI  
Via ai Ciòss 21  
CH-6676 Bignasco  
Switzerland

Email: [emart@aphyllo.net](mailto:emart@aphyllo.net)  
<http://www.aphyllo.net>



Issue № 50:

*Sistotrema coronilla*

Released on: 27<sup>th</sup> April, 2016

© E. Martini

This work is licensed under a [Creative Commons Attribution 4.0 International License \(CC BY 4.0\)](https://creativecommons.org/licenses/by/4.0/)

