

*Leptosporomyces fuscostratus*

Figures 1–6

*Corticium fuscostratum* Burt 1926 [3 : 299]  $\equiv$  *Athelia fuscostrata* (Burt) Donk 1957 [4 : 12]  $\equiv$  *Leptosporomyces fuscostratus* (Burt) Hjortstam 1987 [6 : 58]

= *Corticium ochroleucum* Bres. 1898 [2 : 58] teste Rogers and Jackson [8] and Jülich [7]

= *Scytinostromella olivaceoalba* sensu Jülich (1972) & auct. pl.

**Basidiome** effused, athelioid, loosely adherent to separable, soft, up to 0.2 (0.3) mm thick.

**Hymenophore** at first finely pruinose, soon continuous and smooth to slightly merulioid when fresh, pellicular, when dried smooth, fragile, finely cracked and exposing the subiculum, cream to very pale brown or pale yellow, some spots light ochre, separable from the subiculum.

**Subiculum** distinct, hypochnoid, byssoid, yellowish brown to brownish.

**Margin** irregular, fibrillose, concolorous with the subiculum or whitish when actively growing.

**Rhizomorphs** present in subiculum, at the margin and in the substrate, up to 0.2 (0.4) mm in diam., smooth to pubescent, dull yellow, yellowish brown, brownish.

**Hyphal system** monomitic; all hyphae with fibulate primary septa; subhymenial (1.5) 2–2.5 (3)  $\mu\text{m}$  in diam., thin-walled, hyaline to subhyaline; subicular straight, regular, (2) 2.5–3.5 (3.8)  $\mu\text{m}$  wide, with thickening wall, yellowish brown.

**Rhizomorphs** compact, simple, young ones built up by thin-walled hyaline to subhyaline hyphae mixed with ochraceous ones; older ones with dominance of ochraceous hyphae like the subicular ones; wider rhizomorphs with a pale core built up by slightly wider hyphae up to 4.5  $\mu\text{m}$ , almost thin-walled and hyaline.

**Cystidia** absent.

**Basidia** clavate, 10–15×3–4 µm, hyaline; 4 sterigmata up to 3 µm long.  
**Basidiospores** ellipsoid, narrowly ellipsoid, subcylindrical, 3.5–5×1.7–2.5 µm, smooth, thin-walled, hyaline, 1-nucleate.

**Chemical reactions:** CB–; IKI–

**Incrustation:** subcicular hyphae coarsely to strongly encrusted by crystalline yellowish to ochraceous small granules. Hyphae of exposed rhizomorphs normally smooth.

## Voucher specimens

FRANCE — **Landes** – Cap de l'Homoy, on wood of *Pinus maritimus*, leg. G. Gilles, 4.V.1992 (em-3142) — **Vendée** – La Tranche, Les Casserottes, on wood of a lying, strongly decayed branch of *Pinus sp.*, leg. E. Martini, 29.X.1998 (em-6835)

ITALY — **Trentino-Alto Adige** – Sella Valsugana, on wood of a lying, strongly decayed branch of a coniferous tree, leg. E. Martini, 26.IX.1986 (em-702)

SWITZERLAND — **Ticino** – Airolo, on wood of a strongly decayed stump of *Picea abies*, leg. J. Breitenbach, 14.VI.1983 (NMLU 1406-83 BR (sub *Amylocorticium laceratum*)) – **Bignasco, Comunella**, on wood of a lying, decayed branch on coniferous wood, leg. E. Martini, 27.IV.1986 (em-513) – **Campo V.Maggia, Mòi**, on wood of a lying, decayed branch of *Larix decidua*, leg. E. Martini, 7.IX.1986 (em-838) – **Campo V.Maggia, Mott di Tirman**, on bark of a hard stump of *Larix decidua*, leg. E. Martini, 29.V.1987 (em-1023) – **Cavergno, Faula**, on wood of a lying, rather hard branch of a coniferous tree, leg. E. Martini, 29.IX.2015 (em-12670) – **Chironico, Motta di Gribbio**, on wood of a lying branch of a coniferous tree, leg. E. Martini, 9.V.1987 (em-979) – **Dalpe, Gana**, on wood of a strongly decayed stump of a coniferous tree, leg. E. Martini, 6.VI.1992 (em-4783) – **Mondada, Gramusèd (Valle Bavona)**, on wood of a lying, decayed trunk of a coniferous tree, leg. E. Martini, 25.X.1987 (em-1369) – **Nante**, on hard bark of a coniferous tree, leg. E. Martini, 2.VI.1988 (em-1709) – **Ritorto, Rivera (Valle Bavona)**, on lying, hard wood of a coniferous tree, leg. E. Martini, 8.X.1988 (em-2056) – **Sabbione, Splüieti (Valle Bavona)**, on wood of a lying, hard trunk of a coniferous tree, leg. E. Martini, 10.V.1987 (em-1225) – **San Carlo, Campo (Valle Bavona)**, on wood of *Larix decidua*, leg. E. Martini, 30.V.1997 (em-6088) – *ibid.*, on wood of a lying, decayed trunk of *Larix decidua*, leg. E. Martini, 29.V.2003 (em-8313) – **Someo**, on wood and bark of a lying, hard branch of a coniferous tree, leg. E. Martini, 24.IX.1984 (em-88) – **Val Piora, Canariscio di Ritom**, on wood of a lying, rather hard trunk of *Larix decidua*, leg. E. Martini, 20.VIII.2010 (em-11210) – *ibid.*, on bark of a lying, decayed trunk of *Larix decidua*, leg. E. Martini, 20.VIII.2010 (em-11208) – **Val Piora, Larici di Campo**, on wood of a lying, decayed branch of a coniferous tree, leg. E. Martini, 26.VIII.1988 (em-2205)



Fig. 1: Basidiome. Image width = 25 mm [em-11208]



Fig. 2: Basidiome toward the margin, with rhizomorphs. Image width = 9 mm [em-8313]





Fig. 3: Slightly merulioid hymenophore and margin. Image width = 9 mm [em-11210]

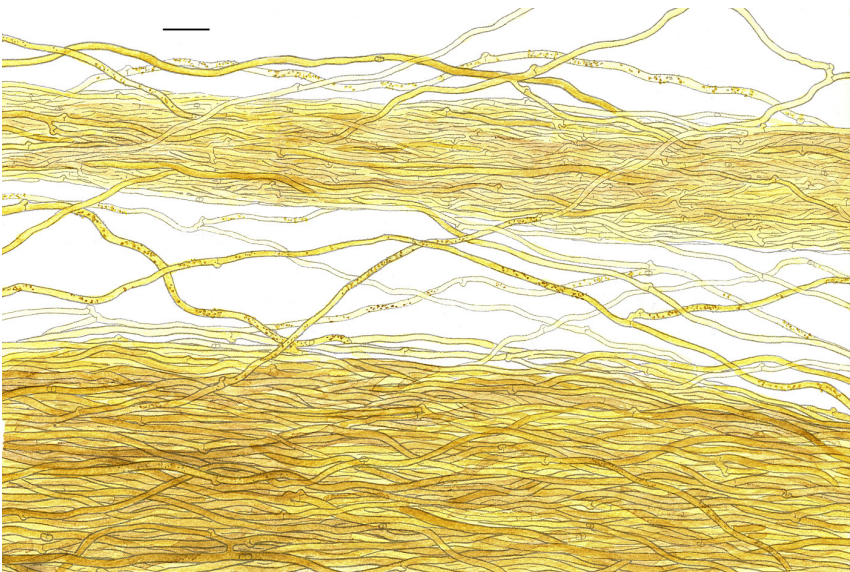


Fig. 4: Rhizomorphs. Bar = 20  $\mu$ m [em-11210]

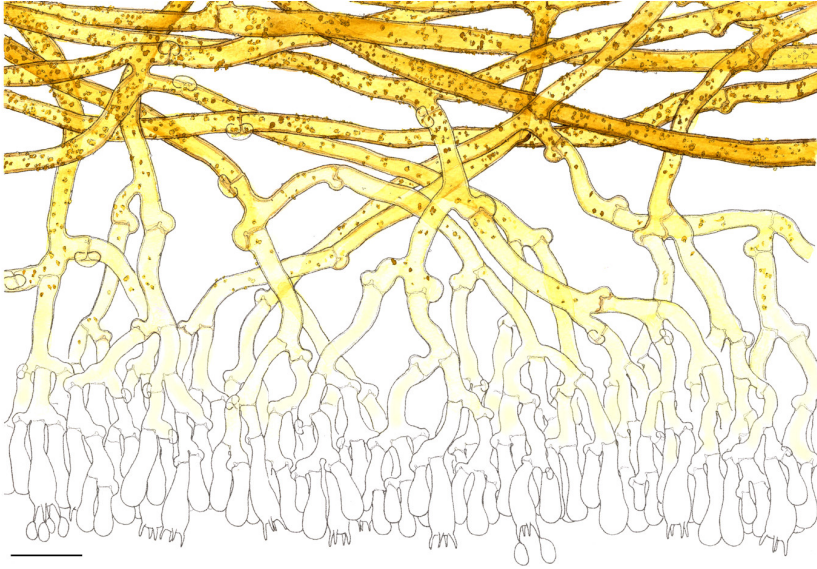


Fig. 5: Section through the basidiome. Bar = 10  $\mu$ m [em-6088]

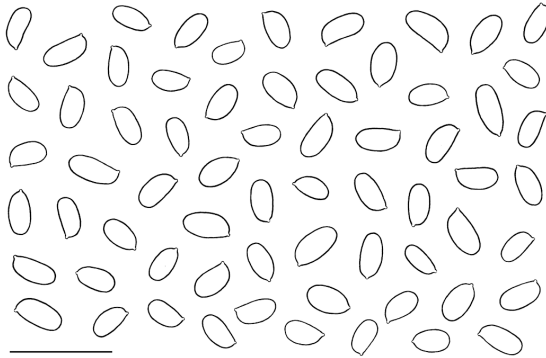


Fig. 6: Basidiospores from spore-print. Bar = 10  $\mu$ m [em-6088]

## References

- [1] BERNICCHIA, A. AND GORJÓN, S.P. (2010). ‘*Corticaceae* s. l.’ *Fungi Europaei*, 12: 1008 p.
- [2] BRESADOLA, G. (1898). ‘Fungi Tridentini’. *Fungi tridentini novi vel nondum delineati*, 2: 1–118, pl. 106–217. URL: <https://archive.org/details/fungitridentini03bresgoog>
- [3] BURT, E.A. (1926). ‘The *Thelephoraceae* of North America XV: Conclusion, with supplement and general index’. *Annals of the Missouri Botanical Garden*, 13 (3): 173–354. DOI: <http://dx.doi.org/10.2307/2394065>. URL: <http://www.biodiversitylibrary.org/item/21963#page/197/>
- [4] DONK, M.A. (1957). ‘Notes on resupinate Hymenomycetes IV’. *Fungus*, 27 (1-4): 1–29
- [5] ERIKSSON, J. AND RYVARDEN, L. (1973). *The Corticiaceae of North Europe, vol. 2: Aleurodiscus - Confertobasidium*. Oslo, pp. 60–261
- [6] HJORTSTAM, K. (1987). ‘A check-list to genera and species of corticioid fungi (Hymenomycetes)’. *Windhalia*, 17: 55–85
- [7] JÜLICH, W. (1972). ‘Monographie der Atheliae (*Corticaceae*, Basidiomycetes)’. *Willdenowia. Beiheft*, 7: 1–283. URL: <http://www.jstor.org/stable/4603627>
- [8] ROGERS, D.P. AND JACKSON, H.S. (1943). ‘Notes on the synonymy of some North American *Thelephoraceae* and other resupinates’. *Farlowia*, 1 (2): 263–328. URL: <http://www.biodiversitylibrary.org/item/33558#page/271/mode/1up>



# Excerpts from *Crusts & Jells*

Descriptions and reports of resupinate Aphyllophorales and Heterobasidiomycetes

Authored and published by

ELIA MARTINI  
Via ai Ciòss 21  
CH-6676 Bignasco  
Switzerland

Email: [emart@aphyllo.net](mailto:emart@aphyllo.net)  
<http://www.aphyllo.net>



Issue N° 47:

*Leptosporomyces fuscostratus*

Released on: 27<sup>th</sup> April, 2016

© E. Martini

This work is licensed under a [Creative Commons Attribution 4.0 International License \(CC BY 4.0\)](https://creativecommons.org/licenses/by/4.0/)

