

Hyphoderma argillaceum

Figures 1–5

Corticium argillaceum Bres. 1892 [2 : 63] ≡ *Peniophora argillacea* (Bres.) Sacc. & Syd. 1902 [7 : 194] ≡ *Kneiffia argillacea* (Bres.) Bres. 1903 [3 : 100] ≡ *Gloeocystidium argillaceum* (Bres.) Höhn. & Litsch. 1908 [6 : 67] ≡ *Hyphoderma argillaceum* (Bres.) Donk 1957 [4 : 14]

Basidiome effused, adherent, subceraceous, up to 0.1 mm thick.

Hymenophore smooth, finely porulose-reticulate to continuous, pubescent because of the projecting cystidia, mostly whitish when fresh, drying cream to pale grey or slightly ochraceous, indistinctly to definitely dotted yellow, ochraceous or reddish-brown.

Margin indistinct, finely thinning out or almost abrupt.

Hyphal system monomitic; all hyphae with fibulate primary septa, (2) 3–4 (5) μm in diam., thin-walled, hyaline; subhymenial compactly arranged; subicular often few, looser and more distinct.

Cystidia of two kinds: 1) projecting, long obclavate, tubular with a bulbous base, up to 150 (300) \times (10) 13–18 (25) μm , apex obtuse 4–7 μm wide, terminal, often shortly stalked, rarely also bi-rooted, thin-walled, hyaline; 2) enclosed or hymenial, hyphoid, capitate (sometimes rare), rounded top about 6–8 μm across.

Basidia suburniform, sometimes almost urniform, (20) 25–38 \times 5–7 μm , old ones often with some transverse simple septa; 4 sterigmata up to 5 μm long.

Basidiospores subcylindrical to ellipsoid with a flattening or rarely slightly depressed adaxial side, (6.5) 7–9 (10) \times 4–5 μm , smooth, thin-walled, often adhering in clusters to the projecting cystidia; apiculus broad and short.

Chemical reactions: IKI–; CB–

Incrustation: projecting and capitate cystidia often coated by light yellow to ochre or reddish brown resinous matter, darkening on drying,

totally or partly dissolving in KOH.

Voucher specimens

FRANCE — **Alpes-Maritimes** – Bois de La Bastide, Le Logis du pin, on strongly decayed wood of *Pinus sylvestris*, leg. H. Michel, 17.VI.1998 (em-6786) – Ile Sainte-Marguerite, on wood of a rather hard branch of *Pinus sp.*, leg. E. & F. Martini, 31.X.1997 (em-6396) — **Aveyron** – Millau, Causse Noir, Forêt domaniale, on wood of a lying, strongly decayed branch of *Pinus sp.*, leg. E. Martini, 28.X.2004 (em-8461) — **Haut-Rhin** – Wildenstein, on wood of a lying, decayed trunk of a gymnosperm, leg. E. Martini, 20.IX.2002 (em-8157) — **Isère** – Méaudre, Col de la Croix Chabaud, on wood of a lying, decayed trunk of *Picea abies*, leg. E. Martini, 8.IX.2014 (em-12273) — **Jura** – Bonlieu, lac de Bonlieu, on wood of a lying, decayed trunk of a coniferous tree, leg. E. Martini, 15.IX.2012 (em-11867) – Moirans-en-Montagne, Grange de la Penne, on wood of a lying, strongly decayed trunk of *Betula sp.*, leg. E. Martini, 11.IX.2012 (em-11858) – *ibid.*, on wood of a lying, decayed branch of a coniferous tree, leg. E. Martini, 11.IX.2012 (em-11899) – Parc Naturel du Haut Jura, La Rixouse, Les Prés de la Rixouse, on wood of a lying, rather hard branch of a coniferous tree, leg. E. Martini, 13.IX.2012 (em-11861) – Prénovel, Bois de la Joux Derrière, Route de la Faïle, on wood and bark of a lying, rather hard branch of *Abies alba*, leg. E. Martini, 10.IX.2012 (em-11846) — **Loire** – Salt-en-Donzy, bords de la Loire, on bark of a lying, decayed trunk of a coniferous tree, leg. E. Martini, 14.X.2015 (em-12775) — **Lorraine** – Philippsbourg, Forêt domaniale de Hanau 3, parcelle H254, on bark of a lying, decayed trunk of *Picea abies*, leg. E. Martini, 27.X.2009 (em-10942) — **Rhône** – St. Martin-en-Haut, Bois de Remayou, on wood of a lying, decayed trunk of *Pinus sylvestris*, leg. E. Martini, 11.X.2015 (em-12797) — **Var** – Brignoles, Camps La Source, on wood of a lying, decayed branch of *Pinus halepensis*, leg. E. Martini, 14.XI.2013 (em-12043) — **Vendée** – La Tranche, Les Casserottes, on wood of a lying, strongly decayed trunk of *Pinus sp.*, leg. E. Martini, 29.X.1998 (em-6821)

LIECHTENSTEIN – Ruggell, Brüchliswald, on inner side of bark of a decayed stump of a coniferous tree, leg. E. Martini, 5.X.1995 (em-5741) – Schaanwald, Bürstwald, on wood of a lying, strongly decayed trunk of a coniferous tree, leg. E. Martini, 6.X.1995 (em-5759)

SWITZERLAND — **Bern** – Baräu, Chammerschusgraben, on wood of a decayed stump of a coniferous tree, leg. E. Martini & E. Zenone, 26.IX.1996 (em-5945) — **Fribourg** – Corminboeuf, La Biolleire, on wood of a lying, decayed trunk of *Picea abies*, leg. E. Martini, 3.X.1998 (em-6705) — **Solothurn** – Riedholz, Waldhütte, on wood of a lying, rather hard trunk of a coniferous tree, leg. E. Martini, 29.IX.2001 (em-7689.1) — **Thurgau** – Berlingen, Wildbach, on wood of a lying, strongly decayed branch of a coniferous tree, leg. E. Martini, 5.X.2006 (em-9113) – Ermatingen, Wolfsberg, on wood of a lying, strongly decayed branch of a coniferous tree, leg. E. Martini, 4.X.2006 (em-9112) – Tägerwilen, Tägerwilerwald, on bark of a lying, decayed trunk of a coniferous tree, leg. E. Martini, 6.X.2006 (em-9110) — **Ticino** – Ambri, Audan, on wood of a lying, strongly decayed trunk of *Alnus incana*, leg. E. Martini, 23.V.1998 (em-6598) – Aquila, on wood of a decayed branch of a deciduous tree, leg. E. Martini, 27.IX.1997 (em-6329) – Ascona, Gratena, on wood of a lying, decayed trunk on coniferous wood, leg. E. Martini, 9.XI.2015 (em-12830) – Bignasco, Ganne, on wood of a lying, decayed trunk of *Castanea sativa*, leg. E. Martini, 5.VII.2014 (em-12169) – Bignasco, Madonna di Monte, on wood of a lying, decayed branch of a deciduous tree, leg. E. Martini, 24.V.1986 (em-891) – Bosco Gurin, on wood on lying, decayed build. timber of a coniferous tree, leg. E. Martini, 30.V.1987 (em-1034) – Broglio, Rima, on wood of a lying, decayed branch of *Picea abies*, leg. E. Martini, 23.V.1987 (em-1005) – Cevio, Consorzio, on wood of a lying, decayed trunk of a coniferous tree,

leg. E. Martini, 26.V.1995 (em-5695) – Chironico, Motta di Gribbio, on lying, strongly decayed wood of a coniferous tree, leg. E. Martini, 3.VI.1988 (em-1734) – Faedo, Rivèra (Valle Bavona), on wood of a lying, strongly decayed trunk of a deciduous tree, leg. E. Martini, 6.V.2005 (em-4483) – Foroglio (Valle Bavona), on wood of a lying, decayed trunk of a deciduous tree, leg. E. Martini, 13.V.1995 (em-5677) – Gordevio, Saleggio, on wood of a lying, strongly decayed branch of a deciduous tree, leg. E. Martini, 1.IX.1986 (em-800) – Meride, Bagno, on wood of a lying, decayed branch of a deciduous tree, leg. E. Martini, 2.VI.2007 (em-9861) – Meride, Bolle, on wood of a lying, decayed branch of a deciduous tree, leg. E. Martini, 13.X.2007 (em-10143) – Meride, Boscaccio, on wood of a lying, strongly decayed trunk of a deciduous tree, leg. E. Martini, 17.V.2007 (em-9806) – Meride, Cassina, on wood of a lying, decayed branch of *Fagus sylvatica*, leg. E. Martini, 30.IX.2006 (em-8975) – Meride, Crocifisso, on wood of a lying, decayed trunk of a deciduous tree, leg. E. Martini, 27.X.2007 (em-10255) – Meride, Cugnoli, on wood of a lying, decayed branch of a deciduous tree, leg. E. Martini, 30.IX.2006 (em-9002) – Meride, Meriggio, on wood of a lying, strongly decayed trunk of *Fagus sylvatica*, leg. E. Martini, 14.X.2006 (em-9192) – Meride, Sermonte, on wood of a lying, strongly decayed branch of a deciduous tree, leg. E. Martini, 11.XI.2006 (em-9523) – Mondada, Gramusèd (Valle Bavona), on bark of a lying, decayed trunk of *Tilia cordata*, leg. E. Martini, 28.VII.2001 (em-7541) – Monte, Campora, Chignö, on wood of a decayed branch of *Hedera helix*, leg. F. Delmenico, 24.VII.2011 (em-12859) – Morbio Superiore, Lattecaldo, on lying, decayed wood of *Fraxinus excelsior*, leg. F. Delmenico, 10.VII.2009 (em-12645) – Novazzano, Valle della Motta, on wood of a lying, decayed trunk of *Populus sp.*, leg. E. Zenone, 24.V.1991 (em-3064) – Prato, Sgrùssa, on wood of a lying, decayed trunk of *Picea abies*, leg. E. Martini, 6.VI.1993 (em-3487) – Ritorto, Dréom (Valle Bavona), on wood of a lying, strongly decayed branch of *Corylus avellana*, leg. E. Martini, 14.VI.2001 (em-7495) – Rodi-Fiesso, on wood of a lying, decayed trunk of a coniferous tree, leg. E. Martini, 22.V.1998 (em-6579) – Sabbione, Caslitt (Valle Bavona), on wood of a lying, strongly decayed trunk of *Tilia cordata*, leg. E. Martini, 13.VIII.1994 (em-3732) – Someo, on wood of a lying, decayed trunk of *Pinus sp.*, leg. E. Martini, 1.VI.2013 (em-11956) – St. Antonino, Copera, on wood of a lying, decayed branch of *Pinus nigra*, leg. E. Zenone, 8.VI.1998 (em-6602)

References

- [1] BERNICCHIA, A. AND GORJÓN, S.P. (2010). ‘Corticaceae s. l.’ *Fungi Europaei*, 12: 1008 p.
- [2] BRESADOLA, G. (1898). ‘Fungi Tridentini’. *Fungi tridentini novi vel nondum delineati*, 2: 1–118, pl. 106–217. URL: <https://archive.org/details/fungitridentini03bresgoog>
- [3] BRESADOLA, G. (1903). ‘Fungi polonici a cl. Viro B. Eichler lecti’. *Annales Mycologici*, 1 (1-2): 65–131 + t. III. URL: <http://www.cybertruffle.org.uk/cyberliber/59685/>
- [4] DONK, M.A. (1957). ‘Notes on resupinate Hymenomycetes IV’. *Fungus*, 27 (1-4): 1–29
- [5] ERIKSSON, J. AND RYVARDEN, L. (1975). *The Corticiaceae of North Europe, vol. 3: Coronicium - Hyphoderma*. Oslo, pp. 288–546
- [6] HÖHNEL, F.X.R. VON AND LITSCHAUER, V. (1908). ‘Österreichische Corticieen’. *Wiesner Festschrift*, 56–80. URL: <http://www.biodiversitylibrary.org/item/42238#page/68/mode/lup>
- [7] SACCARDO, P.A. AND SYDOW, H. (1902). ‘Supplementum Universale, Pars V’. *Sylloge Fungorum*, 16: 1–1291. URL: <http://www.biodiversitylibrary.org/item/102125#page/7>



Fig. 1: Basidiome. Image width = 35 mm [em-9806]

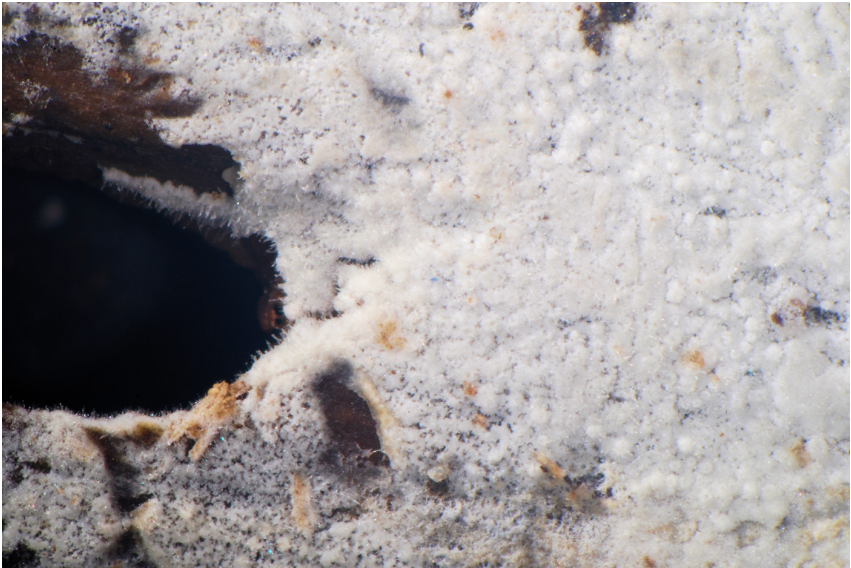


Fig. 2: Detail of the hymenophore. Image width = 9.5 mm [em-11956]

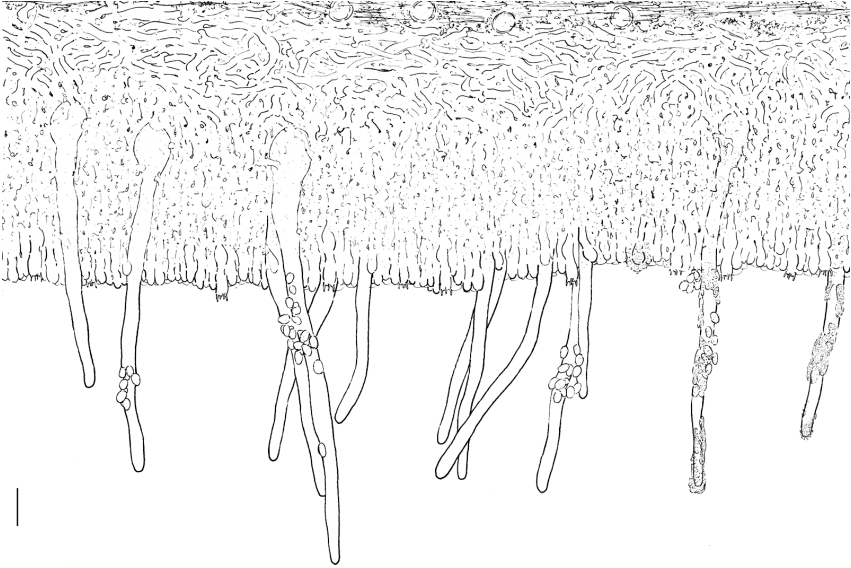


Fig. 3: Vertical section through the basidiome. Bar = 20 μm [em-11956]

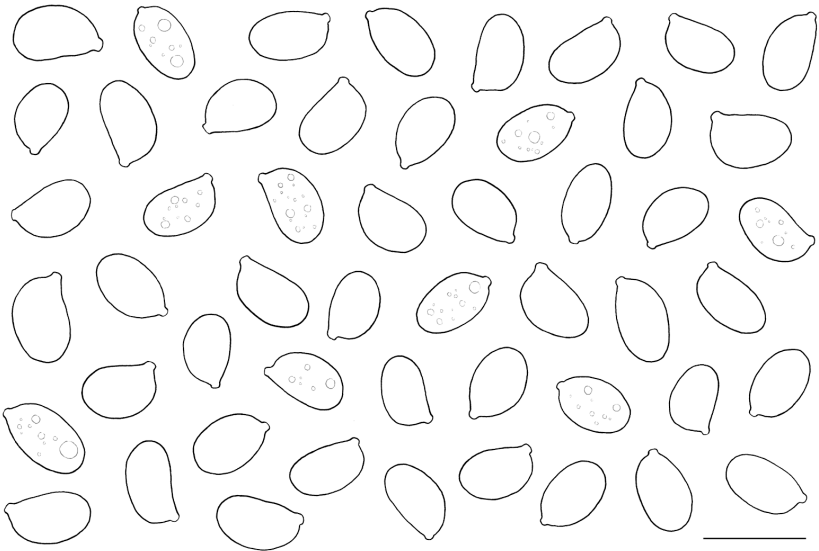


Fig. 4: Basidiospores. Bar = 10 μm [em-11956]

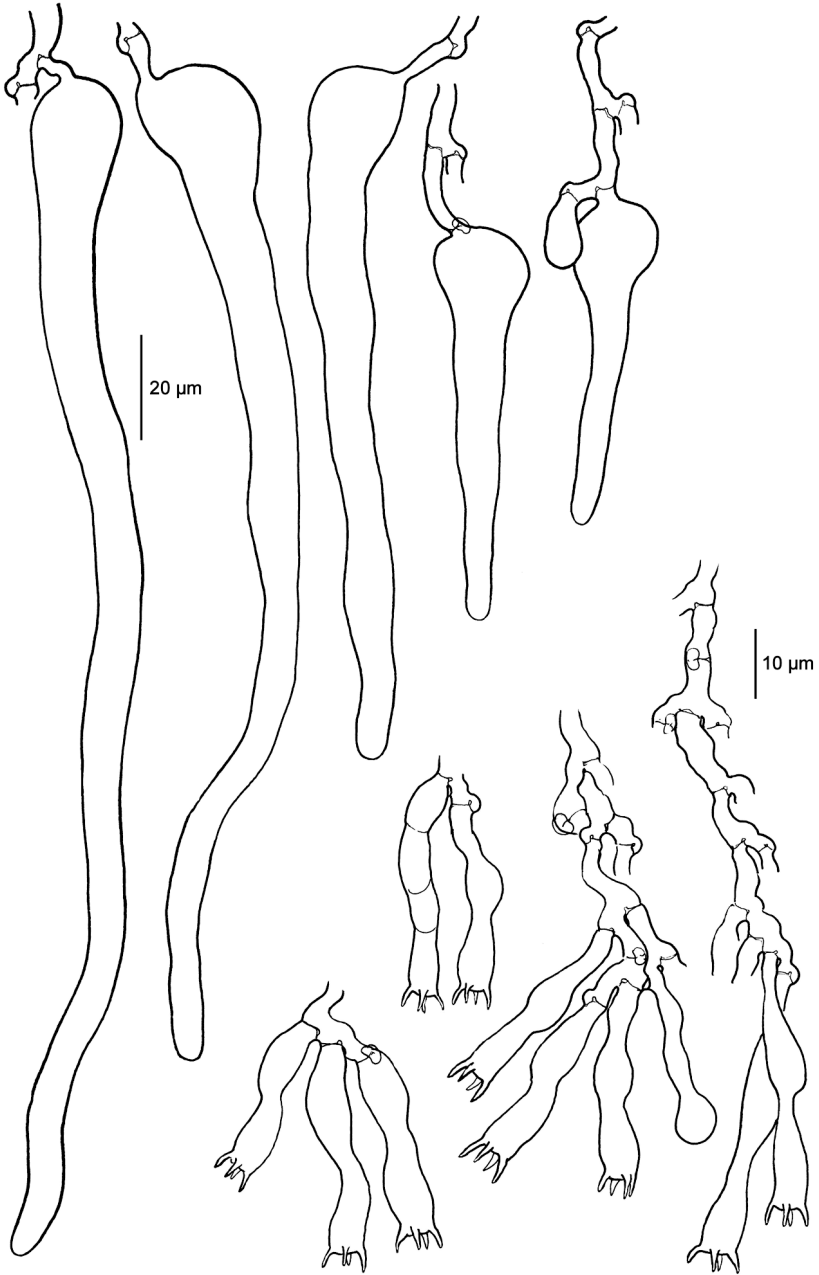


Fig. 5: Cystidia, basidia and subhymental hyphae [em-11956]



Excerpts from *Crusts & Fells*

Descriptions and reports of resupinate Aphyllophorales and Heterobasidiomycetes

Authored and published by

ELIA MARTINI
Via ai Ciòss 21
CH-6676 Bignasco
Switzerland

Email: emart@aphyllo.net
<http://www.aphyllo.net>



Issue № 45:

Hyphoderma argillaceum

Released on: 27th April, 2016

© E. Martini

This work is licensed under a [Creative Commons Attribution 4.0 International License \(CC BY 4.0\)](https://creativecommons.org/licenses/by/4.0/)

