

*Phlebia subcretacea*

Figures 1–5

*Corticium subcretaceum* Litsch. 1939 [5 : 110] ≡ *Phlebia subcretacea* (Litsch.) M.P. Christ. 1960 [2 : 165] ≡ *Jacksonomyces subcretaceus* (Litsch.) Jülich 1982 [4 : 427] ≡ *Cabalodontia subcretacea* (Litsch.) Piatek 2004 [8 : 3]

= *Phlebia lichenoides* Parmasto 1967 [7 : 391] teste Eriksson et al. [3]

= *Corticium aerugineolividum* Romell ex S. Lundell 1950 [6 : 1840] teste Eriksson et al. [3] ≡ *Phlebia aerugineolivida* (Romell ex S. Lundell) M.P. Christ. 1960 [2 : 165]

**Basidiome** effused, adherent, subgelatinous, ceraceous, becoming almost corneous when dry; specimens with a lot of crystals in context turn crustaceous to chalky when dry; up to 0.2 mm thick.

**Hymenophore** smooth, continuous, subhyaline, watery grey to whitish or yellowish, becoming white, yellowish, greyish to pale ochraceous when dry.

**Margin** indistinct, shortly thinning out.

**Hyphal system** monomitic; all hyphae with fibulate primary septa, 1–2 (4) µm in diam., thin-walled, hyaline, embedded in a gelatinous matrix, with guttulate content; subhymenial tortuose, irregular; subicular straighter.

**Cystidia** absent.

**Basidia** clavate, more or less distinctly stalked, (14) 20–25 (30) × (3.5) 4–5 (6) µm; 4 sterigmata up to 3 µm long.

**Basidiospores** suballantoid to allantoid (5) 6–7 (8) × 1.2–1.7 (2) µm, smooth, thin-walled, hyaline, mostly 2-guttulate.

**Chemical reactions:** IKI–; CB–

**Incrustation:** almost absent in some specimens, some others filled with prismatic crystals in the context.

## Voucher specimens

FRANCE — **Aveyron** – La Poujade, Vallée de la Dourbie, on wood of a lying, decayed trunk of *Pinus sp.*, leg. E. Martini, 9.XI.2008 (em-10699) – Millau, Causse Noir, Forêt domaniale, on wood of a lying, decayed trunk of *Pinus sp.*, leg. E. Martini, 28.X.2004 (em-8466) — **Landes** – Carcen-Ponson, on decayed wood of *Salix atrocinerea*, leg. G. Gilles, 13.IV.1994 (em-3683) — **Seine-et-Marne** – Forêt de Fontainebleau, Le Gros Fouteau, parcelle 268, on wood of a lying, decayed trunk of *Fagus sylvatica*, leg. E. Martini, 2.XI.2006 (em-9423)

LIECHTENSTEIN – Balzers, Ellholz, on wood of a lying, rather hard branch of a coniferous tree, leg. E. Martini, 4.X.1995 (em-4020)

SWITZERLAND — **Ticino** – Arzo, Perfetta, on wood of a lying, decayed branch of a deciduous tree, leg. E. Martini, 15.X.1994 (em-3867) – Biasca, Mairano, on wood of a lying, strongly decayed branch of a deciduous tree, leg. E. Martini, 18.IV.2009 (em-10818) – Gordevio, Saleggio, on wood of a lying, hard twig of a coniferous tree, leg. E. Martini, 2.IX.1985 (em-357) – Meride, Bolle, on wood of a lying, decayed trunk of a deciduous tree, leg. E. Martini, 26.XI.2006 (em-9586) – Meride, Boscaccio, on wood of a lying, decayed branch of a deciduous tree, leg. E. Martini, 17.V.2007 (em-9807) – Meride, Bressanella, on wood of a lying, rather hard branch of a deciduous tree, leg. E. Martini, 11.XI.2006 (em-9538) – Meride, Crocifisso, on wood of a lying, decayed branch of a deciduous tree, leg. E. Martini, 27.X.2007 (em-10234) – Meride, Fontana, on wood of a lying, decayed trunk of a deciduous tree, leg. E. Martini, 2.IX.2006 (em-8896) – Meride, Premoran, on wood of a lying, decayed branch of a deciduous tree, leg. E. Martini, 20.VIII.2006 (em-8817) – Meride, Scarnora, on wood of a lying, decayed branch of a deciduous tree, leg. E. Martini, 4.III.2007 (em-9723) – Meride, Sermonte, on wood of a lying, rather hard branch of a deciduous tree, leg. E. Martini, 11.XI.2006 (em-9520) – Meride, Val Porina, on wood of a lying, decayed branch of a deciduous tree, leg. E. Martini, 13.V.2006 (em-8770) – Monte, Valle del Prato della Ca, on lying, decayed wood of *Ostrya carpinifolia*, leg. F. Delmenico, 1.V.2007 (em-9789) – Ritorto, Dréom (Valle Bavona), on wood of a lying, strongly decayed trunk of *Larix decidua*, leg. E. Martini, 31.III.2001 (em-7357) – Someo, on wood of a lying, decayed trunk of *Pinus sp.*, leg. E. Martini, 1.VI.2013 (em-11962)



Fig. 1: Basidiome. Image width = 22 mm [em-11962]

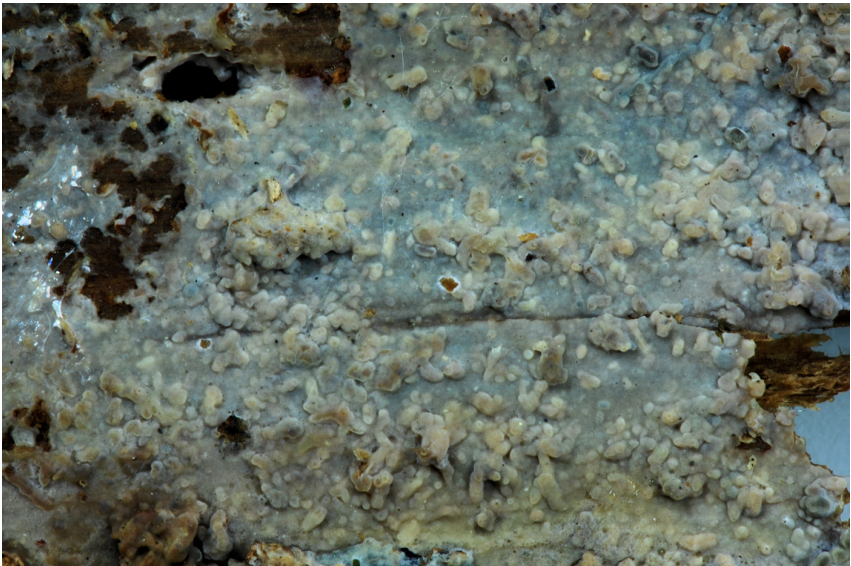


Fig. 2: Basidiome. Image width = 38 mm [em-11962]

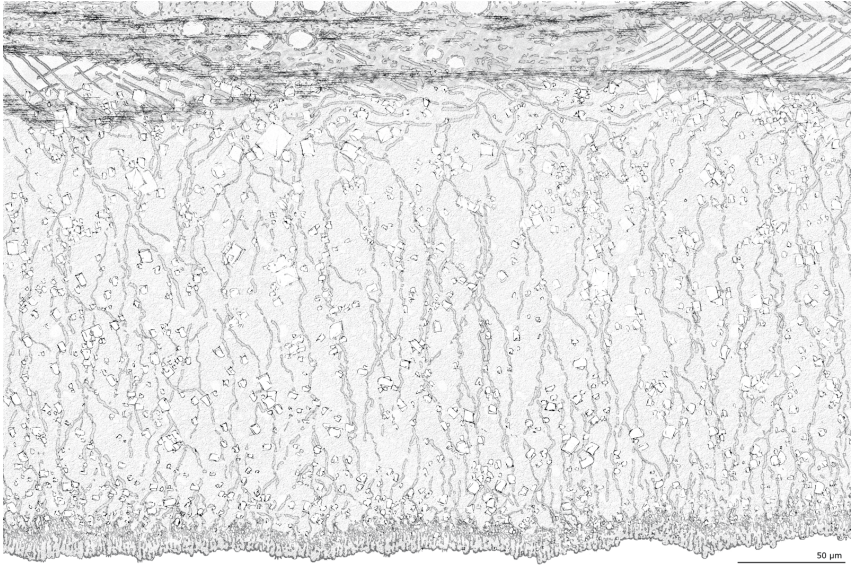


Fig. 3: Section through the basidiome and substrate. Bar = 50 μm [em-9789]

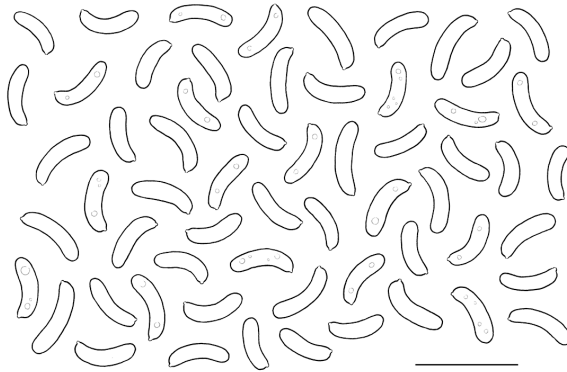


Fig. 4: Basidiospores. Bar = 10 μm [em-4020]

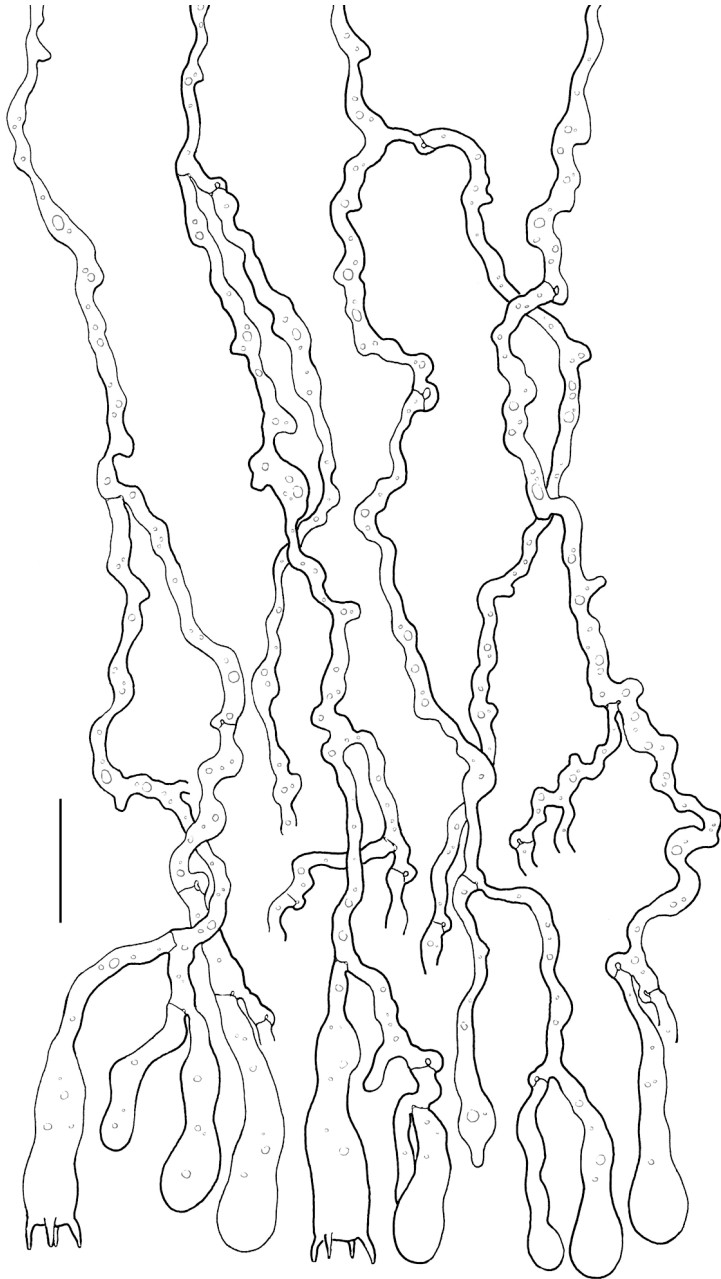


Fig. 5: Basidia, basidioles and subhymenial hyphae. Bar = 10  $\mu\text{m}$  [em-11962]

## References

- [1] BERNICCHIA, A. AND GORJÓN, S.P. (2010). ‘*Corticaceae* s. l.’ *Fungi Europaei*, 12: 1008 p.
- [2] CHRISTIANSEN, M.P. (1960). ‘Danish resupinate fungi, part II. Homobasidiomycetes’. *Dansk Botanisk Arkiv*, 19 (2): 60–388
- [3] ERIKSSON, J., HJORTSTAM, K. AND RYVARDEN, L. (1981). *The Corticiaceae of North Europe, vol. 6: Phlebia - Sarcodontia*. Oslo, pp. 1051–1276
- [4] JÜLICH, W. (1982). ‘Notes on some Basidiomycetes (Aphylophorales and Heterobasidiomycetes)’. *Persoonia*, 11 (4): 421–428
- [5] LITSCHAUER, V. (1939). ‘Ein Beitrag zur Kenntnis der Basidiomyceten der Umgebung des Lunzer Sees in Niederdonau’. *Österreichische Botanische Zeitschrift*, 88 (2): 104–147
- [6] LUNDELL, S. AND NANNFELDT, J.A.F. (1950). ‘[...]’ *Fungi Exsiccati Suecici, Praesertim Upsalienses*, ( 37-38): no. 1801–1900
- [7] PARMASO, E. (1967). ‘*Corticaceae* U.R.S.S IV. Descriptiones taxorum novorum Combinationes novae’. *Eesti NSV Teaduste Akadeemia Toimetised. Bioloogiline seerie*, 16 (4): 377–394
- [8] PIATEK, M. (2004). ‘*Cabalodontia* (*Meruliaceae*), a novel genus for five fungi previously placed in *Phlebia*’. *Polish Botanical Journal*, 49 (1): 1–3. URL: [http://bomax.botany.pl/pubs/data/article\\_pdf?id=802](http://bomax.botany.pl/pubs/data/article_pdf?id=802)



# Excerpts from *Crusts & Jells*

Descriptions and reports of resupinate Aphyllophorales and Heterobasidiomycetes

Authored and published by

ELIA MARTINI  
Via ai Ciòss 21  
CH-6676 Bignasco  
Switzerland

Email: [emart@aphyllo.net](mailto:emart@aphyllo.net)  
<http://www.aphyllo.net>



Issue N° 44:

*Phlebia subcretacea*

Released on: 27<sup>th</sup> April, 2016

© E. Martini

This work is licensed under a [Creative Commons Attribution 4.0 International License \(CC BY 4.0\)](https://creativecommons.org/licenses/by/4.0/)

