

№ 43

Sistotrema porulosum

Figures 1–4

Sistotrema porulosum Hallenb. 1984 [5 : 407]

Basidiome effused, adherent, pruinose, finely reticulated, porulose, tufted, discontinuous, well developed parts becoming almost continuous and smooth or irregularly granulose, often cracked in very small patches about 1–2 mm across, up to 50 (100) µm thick, greyish, whitish to pale yellowish.

Margin indistinct, pruinose.

Hyphal system monomitic; all hyphae with fibulate primary septa; subhymenial indistinct, irregular, (1.5) 2–4 (5) µm in diam., much branched; subicular 2–5 (7) µm wide, without ampullate septa, hyaline or with yellowish oily content, with thin to slightly thickening wall.

Cystidia absent.

Basidia urniform, 10–18 (23) × 3.5–4.5 (top) × 4.5–5.5 µm; with 6 (8) sterigmata up to 2 (3) µm long and about 0.5 µm wide at the base.

Basidiospores ellipsoid with a flattening adaxial side, rarely subcylindrical, 3.5–4.5 × (1.8) 2–2.5 µm, smooth, thin-walled, hyaline.

Chemical reactions: IKI–, CB–

Incrustation: irregular hyaline prismatic crystals often present, scattered to abundant in old parts.

Voucher specimens

FRANCE — **Alpes-Maritimes** – Ile Sainte-Marguerite, on wood of a rather hard branch of *Eucalyptus* sp., leg. E. & F. Martini, 31.X.1997 (em-6416) — **Landes** – Carcen-Ponson, on bark of *Salix cinerea*, leg. G. Gilles 3208, 10.IV.1993 (em-3471) — **Pyrénées-Orientales** – Sorède, La Farguse, on bark of a lying, decayed twig of *Erica* sp., leg. E. Martini, 2.XI.2008 (em-10632)

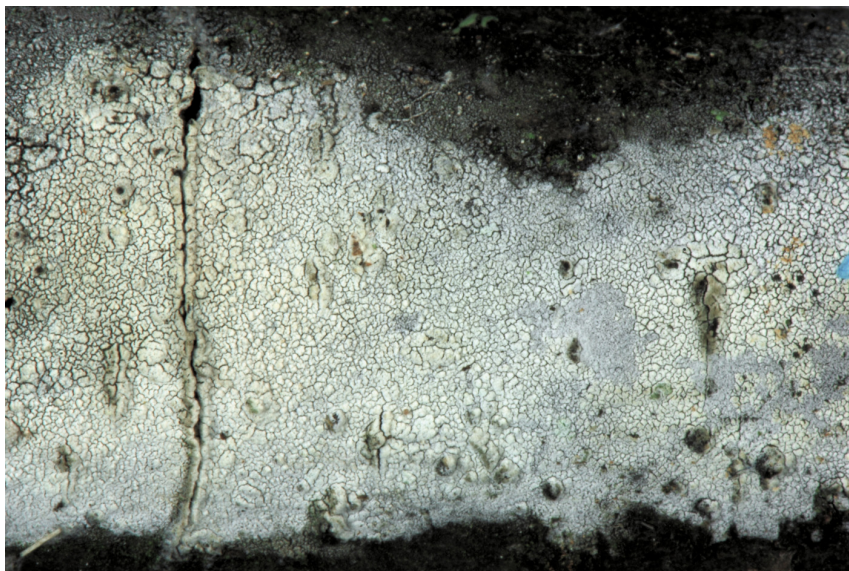


Fig. 1: Basidiome (this specimen on standing twigs of *Tilia cordata*. Image width = 22 mm [em-11064])

SWITZERLAND — **Ticino** – **Aquila**, on wood of a lying, hard twig of a deciduous tree, leg. E. Martini, 27.IX.1997 (em-6336) – **Biasca**, **Mairano**, on bark of a lying, rather hard branch of *Pinus sylvestris*, leg. E. Martini, 18.IV.2009 (em-10830) – **Bignasco**, **Besso**, on bark of a standing, hard branch of *Corylus avellana*, leg. E. Martini, 29.VIII.1993 (em-3554.1) – **Bolle di Magadino**, on bark of a lying, decayed twig of a deciduous tree, leg. E. Martini, 30.X.1987 (em-1266) – **Caveragno**, **Ravör**, on bark of a lying, decayed branch of *Prunus avium*, leg. E. Martini, 15.III.1986 (em-394) – **Cevio**, **Consorzio**, on bark of a lying, decayed branch of a deciduous tree, leg. E. Martini, 6.VI.1985 (em-204) – *ibid.*, on bark of a standing, decayed branch of *Tilia cordata*, leg. E. Martini, 16.V.2010 (em-11064) – **Mondada**, **Gramusèd (Valle Bavona)**, on bark of a lying, rather hard branch of *Corylus avellana*, leg. E. Martini, 20.IV.2002 (em-7936) – **Monte**, **Campora**, **Chignö**, on lying, decayed wood of *Castanea sativa*, leg. F. Delmenico, 12.I.2010 (em-11002) – **Nante**, **Segna**, on wood of a decayed branch of *Alnus viridis*, leg. E. Martini, 2.VI.1988 (em-1718) – **Osco**, **Scioritt**, on wood of a lying, decayed branch of a coniferous tree, leg. E. Martini, 4.VI.1993 (em-3506) – **Ritorto**, **Rivera (Valle Bavona)**, on wood of a lying, decayed twig of a deciduous tree, leg. E. Martini, 3.X.1987 (em-1395) – **Sabbione**, **Caslitt (Valle Bavona)**, on wood of a lying, rather hard branch of *Tilia cordata*, leg. E. Martini, 19.III.2002 (em-7916) – **San Carlo**, **Campo (Valle Bavona)**, on wood of a lying, decayed twig of *Larix decidua*, leg. E. Martini, 29.V.2003 (em-8310) – **Sornico**, on wood of a lying, rather hard branch of a deciduous tree, leg. E. Martini, 11.VI.1994 (em-3780.1) – **Val Piora**, **Mottone**, on bark of a lying, rather hard branch of *Alnus viridis*, leg. E. Martini, 29.VIII.2010 (em-11285)

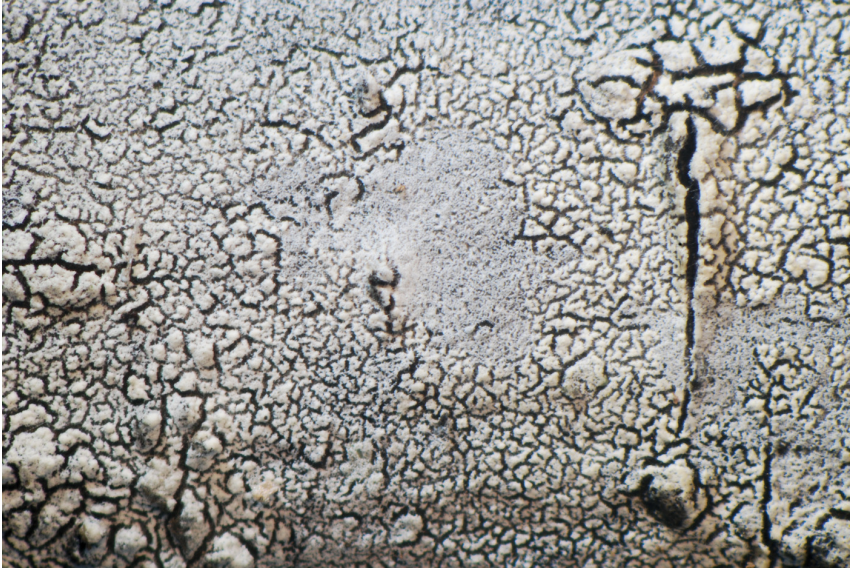


Fig. 2: Detail of the hymenophore showing old, cracked parts and young, finely porulose patches. Image width = 9.5 mm [em-11064]

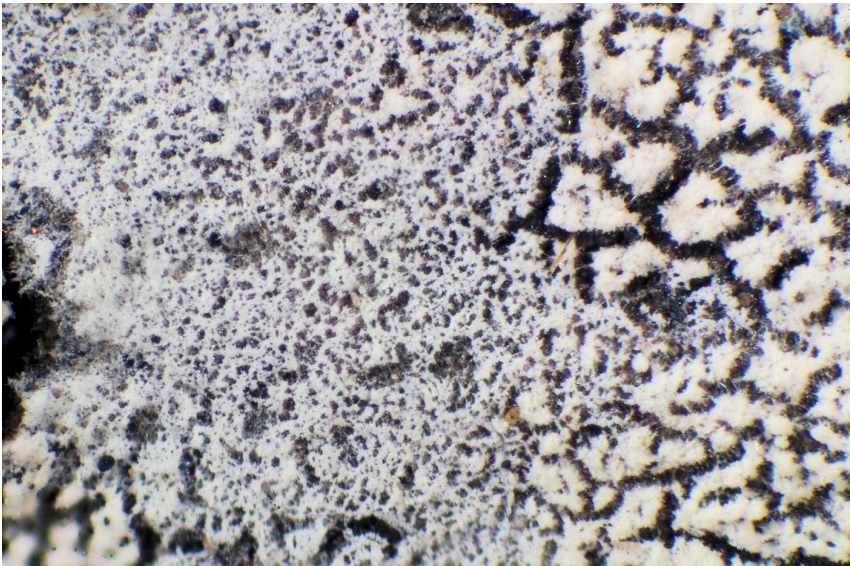


Fig. 3: Detail of the hymenophore, young and old patches (dried basidiome). Image width = 2.3 mm [em-11064]

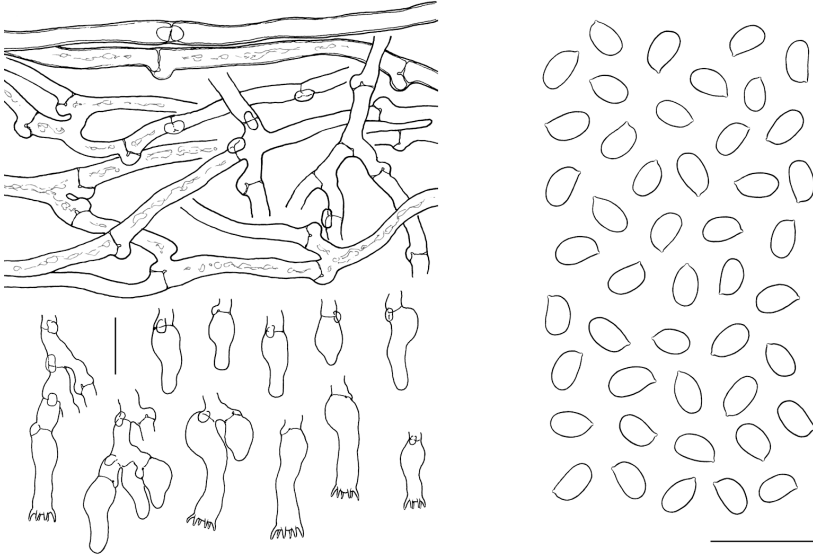


Fig. 4: Basidia, hyphae, basidiospores. Bar = 10 μ m [em-11064]

References

- [1] BERNICCHIA, A. AND GORJÓN, S.P. (2010). '*Corticaceae* s. l.' *Fungi Europaei*, 12: 1008 p.
- [2] BOLDIN, J. AND GILLES, G. (1994). 'Contribution à la connaissance des Corticiés à basides urniformes ou suburniformes (Basidiomycotina)'. *Bulletin de la Société Mycologique de France*, 110 (4): 185–229
- [3] GORJÓN, S.P. AND HALLENBERG, N. (2008). 'New records of *Sistotrema* species (Basidiomycota) from the Iberian Peninsula'. *Sydowia*, 60 (2): 205–212
- [4] GORJÓN, S.P., HALLENBERG, N. AND BERNICCHIA, A. (2009). 'A survey of the corticioid fungi from the Biosphere Reserve of Las Batuecas-Sierra de Francia (Spain)'. *Mycotaxon*, 109: 161–164 + checklist, p. 1–29. URL: <http://www.mycotaxon.com/resources/checklists/gorjon-v109-checklist.pdf>
- [5] HALLENBERG, N. (1984). 'A taxonomic analysis of the *Sistotrema brinkmannii* complex (*Corticaceae*, Basidiomycetes)'. *Mycotaxon*, 21: 389–411. URL: <http://www.cybertruffle.org.uk/cyberliber/59575/index.htm>



Excerpts from *Crusts & Fells*

Descriptions and reports of resupinate Aphyllophorales and Heterobasidiomycetes

Authored and published by

ELIA MARTINI
Via ai Ciòss 21
CH-6676 Bignasco
Switzerland

Email: emart@aphyllo.net
<http://www.aphyllo.net>



Issue № 43:

Sistotrema porulosum

Released on: 27th April, 2016

© E. Martini

This work is licensed under a [Creative Commons Attribution 4.0 International License](https://creativecommons.org/licenses/by/4.0/) (CC BY 4.0)

