

Botrybasidium capitatum

Figures 1–7

Acladium capitatum Link 1809 [9 : 12, t. 1:13] ≡ *Haplotrichum capitatum* (Link) Link 1824 [10 : 52] ≡ *Sporocephalium capitatum* (Link) Chevall. 1826 [2 : 60] ≡ *Botrytis capitata* (Link) Duby 1830 [3 : 919] ≡ *Oidium capitatum* (Link) Hol.-Jech. 1969 [6 : 210] ≡ *Botrybasidium capitatum* (Link) Rossman & J.G. Allen 2016 [11 : 5]

= *Monilia candicans* Sacc. 1876 [12 : 195] ≡ *Oidium candicans* (Sacc.) Linder 1942 [8 : 183]

= *Botrybasidium candicans* J. Erikss. 1958 [4 : 6]

Basidiome effused, reticulated, porulose, discontinuous, hypochnoid, loose, separable when fresh, up to 0.05 (0.1) mm thick, light grey, turning cream to light buff when dry.

Margin indistinct, pruinose.

Hyphal system monomitic; all hyphae simple-septated. Subhymenial hyphae 4–5 (7) μm in diam. soon with thickening wall; subicular hyphae 6–10 μm wide, with thickening wall, hyaline.

Cystidia absent.

Basidia short cylindrical, utriform, 12–15 (18) \times 5–8 μm ; with 6 sterigmata up to 3 μm long.

Basidiospores amygdaliform, somewhat biapiculate, (6) 6.5–8 (8.5) \times (2.8) 3–4 (4.2) μm , smooth, thin-walled, hyaline.

Anamorphic state: *Haplotrichum capitatum*, normally present in irregular patches, often mixed with the teleomorph.

Colonies effused, farinose to hypochnoid, tufted, white to cream, slightly more yellowish when dry.

Conidiophores hyphoid, slender, up to 250 \times 4.5–7 μm in diam. (top), 7–10 μm (base), unbranched or only toward the base, hyaline to subhyaline.

Conidiogenous cells distal (and subdistal), cylindrical to strictly clavate, with denticles along their length, these $2\text{-}3 \times 1.5\text{-}3 \mu\text{m}$.

Conidia in short chains, ellipsoid to limoniform, $13\text{-}18 \times 8\text{-}12 \mu\text{m}$, basal ones with 2-5 denticles on the outline, wall thin to thickening, hyaline to subhyaline.

Chemical reactions: all elements cyanophilous; IKI-

Incrustation: absent.

Voucher specimens

FRANCE — **Seine-et-Marne** – Forêt de Fontainebleau, Le Gros Fouteau, parcelle 268, on wood of a lying, decayed trunk of *Fagus sylvatica*, leg. E. Martini, 2.XI.2006 (em-9391) — **Vendée** – Longeville, La Forestière, on bark of a lying, decayed branch of *Pinus sp.*, leg. E. Martini, 28.X.1998 (em-6755)

SWITZERLAND — **St. Gallen** – Mogelsberg, Aach, on bark of a lying, decayed trunk of a deciduous tree, leg. E. Martini, 27.IX.2010 (em-11424) — **Thurgau** – Tägerwilen, Tägerwilerwald, on bark of a lying, decayed trunk of a coniferous tree, leg. E. Martini, 6.X.2006 (em-9144) — **Ticino** – Cavergho, Faula, on wood of a lying, decayed twig of *Quercus robur*, leg. E. Martini, 4.VIII.2014 (em-12219) – **Cerentino**, Piano dei Vitetti, on wood and bark of a lying, decayed trunk of *Picea abies*, leg. E. Martini, 28.V.1987 (em-1030) – Foroglio (Valle Bavona), on wood of a lying, strongly decayed trunk of a deciduous tree, leg. E. Martini, 13.V.1995 (em-5678) – **Fusio**, Fontanalba, on wood of a lying, strongly decayed branch of *Picea abies*, leg. E. Martini, 6.VIII.2014 (em-12220) – **Gordevio**, Saleggio, on wood of a lying, rather hard trunk of *Pinus sylvestris*, leg. E. Martini, 24.IV.2010 (em-11037) – **Malvaglia**, Piantagione, on wood of a lying, decayed branch of a coniferous tree, leg. E. Martini, 19.VI.2010 (em-11121) – **Meride**, Fontana, on wood of a lying, strongly decayed trunk of a deciduous tree, leg. E. Martini, 2.IX.2006 (em-8886) – **Meride**, Serpiano, on bark of a lying, decayed branch of *Fagus sylvatica*, leg. E. Martini, 14.X.1994 (em-5613) – **Mondada**, Gramusèd (Valle Bavona), on wood of a deciduous tree, leg. E. Martini, 13.VIII.1989 (em-4538) – **Prato**, Sgrùssa, on wood of a lying, strongly decayed trunk of a deciduous tree, leg. E. Martini, 6.VI.1993 (em-5307) – **Ritorto**, Dréom (Valle Bavona), on wood of a lying, strongly decayed trunk of *Tilia cordata*, leg. E. Martini, 14.VI.2001 (em-7488) – *ibid.*, on wood of a lying, strongly decayed branch of an angiosperm, leg. E. Martini, 24.VIII.2002 (em-8080) – *ibid.*, on wood of a lying, decayed branch of *Corylus avellana*, leg. E. Martini, 24.VIII.2002 (em-8099) – **Ritorto**, Rivera (Valle Bavona), on wood of a lying, decayed trunk of *Fraxinus excelsior*, leg. E. Martini, 4.V.2013 (em-11951) – **Sabbione**, Caslitt (Valle Bavona), on wood of a lying, hard trunk of a coniferous tree, leg. E. Martini, 9.VI.1990 (em-4539) – *ibid.*, on bark of a lying, rather hard trunk of *Acer sp.*, leg. E. Martini, 13.VIII.1994 (em-5455) – **San Carlo**, Prèsa (Valle Bavona), on bark of a lying, decayed trunk of *Alnus incana*, leg. E. Martini, 5.VIII.2009 (em-10796) – **Someo**, on wood of a lying, strongly decayed branch of *Pinus sp.*, leg. E. Martini, 1.VI.2013 (em-11972) — **Vaud** – Les Diableréts, on a lying, decayed branch of a deciduous tree, leg. G. Gilles, 25.VIII.1993 (em-5331)



Fig. 1: Basidiome in field (branch turned upside-down). Image width = 12 cm [em-11951]

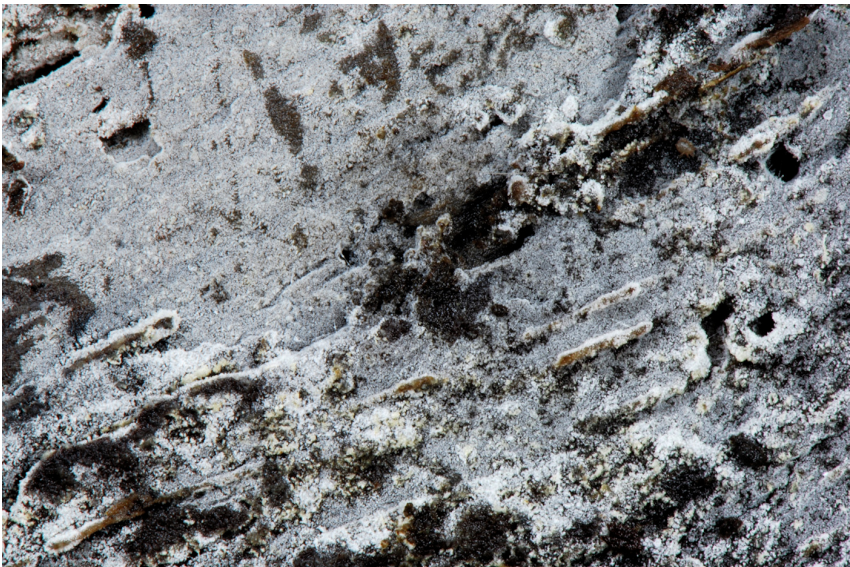


Fig. 2: Basidiome. White parts are the imperfect state, light grey parts (mostly) the perfect state. Image width = 23 mm [em-11951]



Fig. 3: Detail of a young part of the basidiome. Image width = 9.5 mm [em-11951]



Fig. 4: Dried basidiome: detail of the hymenophore (mostly teleomorph). Image width = 4 mm [em-11951]

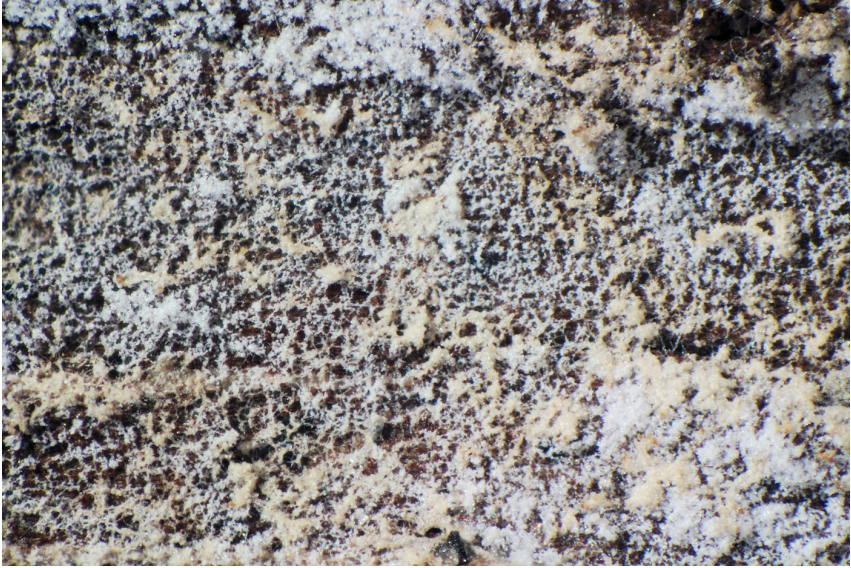


Fig. 5: Dried basidiome: detail of the hymenophore (mostly anamorph). Image width = 4 mm [em-11951]

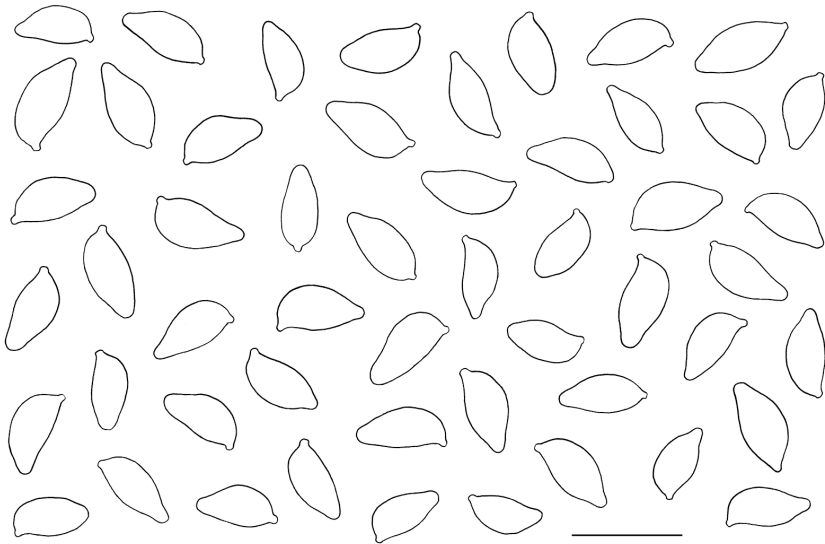


Fig. 6: Basidiospores. Bar = 10 μ m [em-11951]



Fig. 7: Hyphae and basidia (right), conidiophores and conidia (left), basidiospores.
Bar = 10 μm [em-11951]

References

- [1] BERNICCHIA, A. ET AL. (2008). ‘Aphyllphoraceous wood-inhabiting fungi on *Quercus* ssp. in Italy’. *Mycotaxon*, 104: 445–448 + checklist, p. 1–25. URL: http://www.mycotaxon.com/resources/checklists/bernicchia_v104-checklist.pdf
- [2] CHEVALLIER, F.F. (1826). *Flore générale des environs de Paris, selon la méthode naturelle [...]* Paris. 2 vol. (674, 983 p.) URL: <http://books.google.ch/books?id=ZvonAAAAAYAJ>
- [3] DE CANDOLLE, A. AND DUBY, J.E. (1828). *Botanicon gallicum seu synopsis plantarum in flora gallica descriptarum*. 2nd. Paris. 2 vol. (1068 p.) URL: <http://www.biodiversitylibrary.org/bibliography/6352#/summary>
- [4] ERIKSSON, J. (1958). ‘Studies in *Corticaceae* (*Botryohypochnus* Donk, *Botryobasidium* Donk and *Gloeocystidiellum* Donk)’. *Svensk Botanisk Tidskrift*, 52 (1): 1–17
- [5] ERIKSSON, J., HJORTSTAM, K. AND RYVARDEN, L. (1981). *The Corticiaceae of North Europe, vol. 6: Phlebia - Sarcodontia*. Oslo, pp. 1051–1276
- [6] HOLUBOVÁ-JECHOVÁ, V. (1969). ‘New species of the genus *Oidium* Link ex Fr. emend. Lindner’. *Česká Mykologie*, 23 (4): 209–221. URL: <http://www.czechmycology.org/czech-mycology-content.php>
- [7] LANGER, G. (1994). ‘Die Gattung *Botryobasidium* Donk (*Corticaceae*, Basidiomycetes)’. *Bibliotheca Mycologica*, 158: 1–459
- [8] LINDER, D.H. (1942). ‘A contribution towards a monograph of the genus *Oidium* (fungi imperfecti)’. *Lloydia*, 5 (3): 165–207
- [9] LINK, H.F. (1809). ‘Observationes in ordines plantarum naturales. Dissertatio I’. *Magazin / Gesellschaft Naturforschender Freunde zu Berlin*, 3 (1): 3–42. URL: <http://books.google.ch/books?id=yiYVAAAAAYAJ>
- [10] LINK, H.F. (1824). *Caroli a Linné Species Plantarum exhibentes Plantas Rite Cognitas ad Genera Relatas*. 4th ed. 6 vols. Berolini, 6(1) : 1–162. URL: <http://www.biodiversitylibrary.org/item/14571#page/1/mode/1up>
- [11] ROSSMAN, A.Y., ALLEN, W.C. AND CASTLEBURY, L.A. (2016). ‘New combinations of plant-associated fungi resulting from the change to one name for fungi’. *IMA Fungus*, 7 (1): 1–7. DOI: <http://dx.doi.org/10.5598/imafungus.2016.07.01.01>
- [12] SACCARDO, P.A. (1876). ‘Fungi Veneti novi vel critici. Series V’. *Nuovo Giornale Botanico Italiano*, 8 (2): 162–211. URL: <http://bibdigital.rjb.csic.es/ing/Libro.php?Libro=3314>



Excerpts from *Crusts & Jells*

Descriptions and reports of resupinate Aphyllophorales and Heterobasidiomycetes

Authored and published by

ELIA MARTINI
Via ai Ciòss 21
CH-6676 Bignasco
Switzerland

Email: emart@aphyllo.net
<http://www.aphyllo.net>



Issue N° 42:

Botryobasidium capitatum

Released on: 27th April, 2016

© E. Martini

This work is licensed under a [Creative Commons Attribution 4.0 International License \(CC BY 4.0\)](https://creativecommons.org/licenses/by/4.0/)

