

## № 30

*Metulodontia nivea*

Figures 1–6

*Kneiffia nivea* P. Karst. 1896 [5 : 173] ≡ *Peniophora nivea* (P. Karst.) Bourdot & Galzin 1913 [2 : 394] ≡ *Metulodontia nivea* (P. Karst.) Parmasto 1968 [6 : 118]

≡ *Hyphoderma karstenii* Jülich 1974 [4 : 80]

**Basidiome** effused, adherent, membranaceous, up to 0.2 (0.3) mm thick.

**Hymenophore** smooth then sparsely granuloid or granulose, white to pale yellowish, almost unchanged or turning yellowish on drying.

**Margin** mostly abrupt or finely fibrillose, occasional or commonly with thin, whitish to yellowish rhizomorphs.

**Hyphal system** monomitic; all hyphae with fibulate primary septa, 1.5–3.5 (4)  $\mu\text{m}$  in diam., mostly thin-walled, compactly arranged and sinuous in subhymenium, looser in subiculum.

**Cystidia** of two kinds: 1) lamprocystidia clavate to cylindrical, 20–80  $\times$  8–12  $\mu\text{m}$ , thick-walled, hyaline, enclosed or projecting up to 50  $\mu\text{m}$ ; 2) gloeocystidia hyphoid, subulate, 25–40  $\times$  3–4  $\mu\text{m}$ , with oily content, sometimes with a small apical papilla.

**Basidia** narrowly clavate, sometimes with a median constriction, 15–35  $\times$  4–5  $\mu\text{m}$ , fibulate at the basal septum; 4 sterigmata up to 4  $\mu\text{m}$  long.

**Basidiospores** ellipsoid to broadly ellipsoid, 3.5–4.7 (5)  $\times$  2.2–3 (3.5)  $\mu\text{m}$ , smooth, thin-walled, hyaline, often with one large guttula.

**Chemical reactions:** CB–; IKI–; SA: gloeocystidia sometimes sulpho-positive at time of collecting; no reaction observed in the dried specimens studied.

**Incrustation:** crystals on cystidia, subicular hyphae and sometimes also in the subhymenium, prismatic, rhomboidal-elongated, up to 5 (10)  $\mu\text{m}$  in diam., hyaline.



Fig. 1: Dried basidiome. Image width = 23 mm [em-3492]

## Voucher specimens

FRANCE — **Isère** – Villars-de-Lans, Bois Barbu, on wood of a lying, decayed trunk of a deciduous tree, leg. E. Martini, 10.IX.2014 (em-12306) — **Jura** – Moirans-en-Montagne, Grange de la Penne, on wood of a lying, decayed trunk of *Abies alba*, leg. E. Martini, 11.IX.2012 (em-11913)

SWITZERLAND — **Ticino** – Chironico, Motta di Gribbio, on wood of a lying, decayed trunk of a coniferous tree, leg. E. Martini, 3.VI.1988 (em-1736) – Dalpe, Motto d'Orlascio, on wood of a lying, strongly decayed trunk of *Picea abies*, leg. E. Martini, 5.VI.1993 (em-3492) – Meride, Veschee, on wood of a lying, decayed branch of *Fagus sylvatica*, leg. E. Martini, 22.IX.2007 (em-10100)



Fig. 2: Dried basidiome. Image width = 23 mm [em-10100]



Fig. 3: Dried basidiome (with host) [em-10100]



Fig. 4: Detail of the hymenophore and margin. Image width = 9 mm [em-10100]

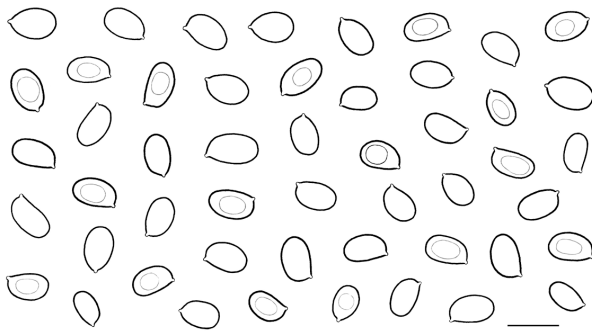


Fig. 5: Basidiospores. Bar = 5  $\mu$ m [em-10100]

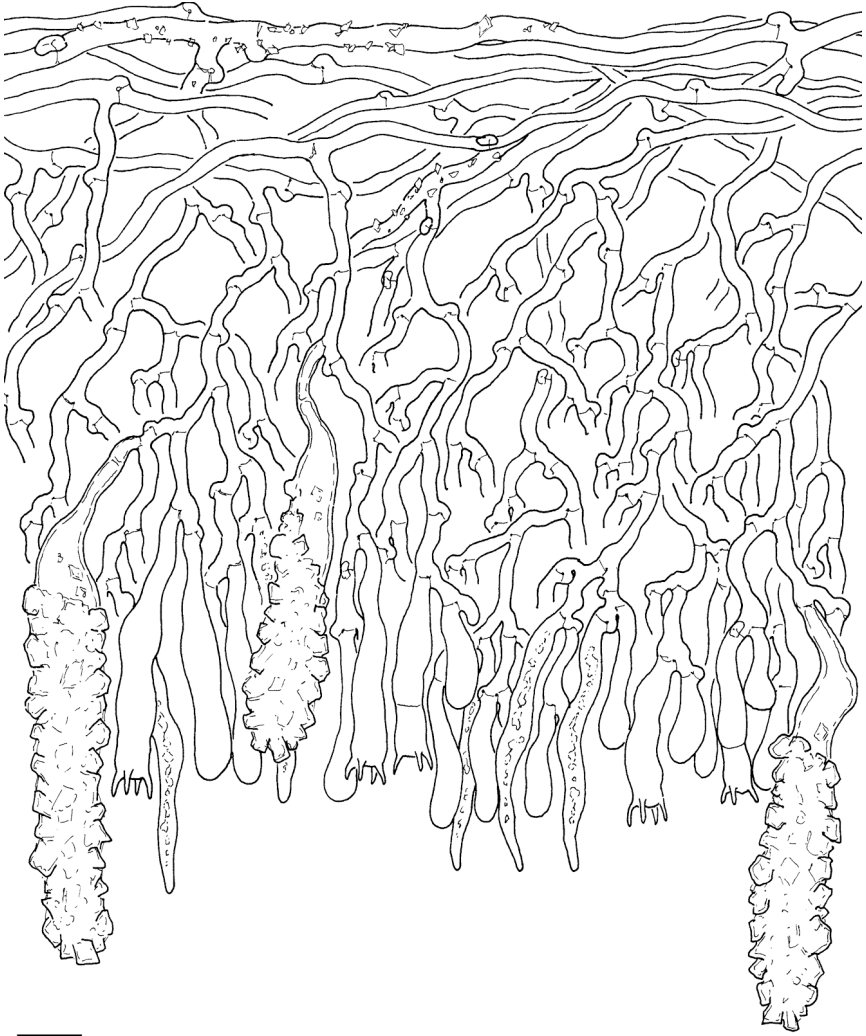


Fig. 6: Schematic vertical section through the basidiome. Bar = 10  $\mu\text{m}$  [em-10100]

## References

- [1] BERNICCHIA, A. AND GORJÓN, S.P. (2010). ‘*Corticaceae* s. l.’ *Fungi Europaei*, 12: 1008 p.
- [2] BOURDOT, H. AND GALZIN, A. (1912). ‘Hyménomycètes de France, IV. Corticiés: *Vuilleminia*, *Aleurodiscus*, *Dendrothele*, *Gloeocystidium*, *Peniophora*’. *Bulletin de la Société Mycologique de France*, 28 (4): 349–409. URL: <http://www.biodiversitylibrary.org/item/106667#page/423>
- [3] ERIKSSON, J. AND RYVARDEN, L. (1976). *The Corticiaceae of North Europe, vol. 4: Hyphodermella - Mycoacia*. Oslo, pp. 549–886
- [4] JÜLICH, W. (1974). ‘The genera of the *Hyphodermoideae*’. *Persoonia*, 8 (1): 59–97
- [5] KARSTEN, P.A. (1896). ‘Fragmenta mycologica XLIV [2]’. *Hedwigia*, 35 (4): 173–174. URL: <http://www.biodiversitylibrary.org/item/13878#page/215>
- [6] PARMASTO, E. (1968). *Conspectus Systematis Corticiacearum*. Tartu. 261 p.



# Excerpts from *Crusts & Fells*

Descriptions and reports of resupinate Aphyllophorales and Heterobasidiomycetes

Authored and published by

ELIA MARTINI  
Via ai Ciòss 21  
CH-6676 Bignasco  
Switzerland

Email: [emart@aphyllo.net](mailto:emart@aphyllo.net)  
<http://www.aphyllo.net>



Issue № 30:

*Metulodontia nivea*

Released on: 27<sup>th</sup> April, 2016

© E. Martini

This work is licensed under a [Creative Commons Attribution 4.0 International License \(CC BY 4.0\)](https://creativecommons.org/licenses/by/4.0/)

