

Xenasmatella ardosiaca

Figures 1–8

Corticium ardosiacum Bourdot & Galzin 1928 [1 : 234] ≡ *Phlebiella ardosiaca* (Bourdot & Galzin) K.H. Larss. & Hjortstam 1987 [2 : 316] ≡ *Xenasmatella ardosiaca* (Bourdot & Galzin) Stalpers 1996 [3 : 37]

— Sensu auct. pl. → *Xenasmatella decipiens* Hjortstam & Ryvarden

Basidiome effused, adherent, encrusting, more or less ceraceous, up to 50 (80) μm thick, often becoming somewhat corneous when dried, sometimes with short fertile threads about 0.05 (0.1) mm thick running here and there over the hymenium.

Hymenium finely reticulate and discontinuous to smooth and continuous, variable in colour from light grey to light bluish grey or cream to light ochre, often more or less distinctly bicoloured.

Margin indistinct, indefinitely to shortly thinning out, sometimes determinate and abrupt, concolorous with the hymenial surface.

Hyphal system monomitic, all hyphae fibulate but clamps very difficult to observe. Hyphae irregular, richly branched, (0.5) 1–2.5 (3) μm in diam., thin-walled, hyaline.

Cystidia absent.

Basidia pleural, broadly clavate to cylindrical, 11–16 (22) \times 5.5–7 (8) μm ; 4 sterigmata 5–8 μm long.

Basidiospores ellipsoid to broadly ellipsoid in lateral and frontal face, globose in polar face, (3.5) 4–6 (6.5) \times 3.2–5 μm , $Q = 1.1$ –1.3 (1.4), asperulate to echinulate, with thickening to thick wall, hyaline; aculei blunt, up to 0.4 (0.8) μm long.

Chemical reactions: CB–; IKI–

Incrustation: often with small to large rhomboidal or prismatic crystals.

Voucher specimens

ITALY – Pombia, on bark of a lying, decayed branch of *Quercus cerris*, leg. E. Zenone, 2.XI.1988 (em-2235)

LIECHTENSTEIN – Ruggell, Brüchliswald, on wood of a lying, decayed branch of a deciduous tree, leg. E. Martini, 5.X.1995 (em-4036)

SWITZERLAND — Ticino – Arzo, Cava di marmo, on wood of a lying, decayed trunk of *Tilia cordata*, leg. E. Martini, 13.V.2006 (em-8771) – Ascona, Gratena, on wood of a lying, rather hard trunk of *Castanea sativa*, leg. E. Martini, 9.XI.2015 (em-12820) – Bignasco, Besso, on wood of a lying, decayed branch of *Quercus robur*, leg. E. Martini, 23.V.2010 (em-11094) – *ibid.*, on wood of a lying, decayed branch of *Quercus petraea*, leg. E. Martini, 18.XI.2014 (em-12414) – Bolle di Magadino, on wood of a lying, strongly decayed trunk of *Alnus incana*, leg. E. Zenone, 29.IX.1987 (em-1228) – Caveragno, Faula, on wood of a lying, decayed branch of a deciduous tree, leg. E. Martini, 29.IX.2015 (em-12678) – Caveragno, Ranèe, on wood of a lying, decayed branch of *Corylus avellana*, leg. E. Martini, 4.VIII.2014 (em-12212) – Faedo, Rivèra (Valle Bavona), on wood of a lying, decayed branch of a deciduous tree, leg. E. Martini, 6.V.2005 (em-8570) – Fontanellata (Valle Bavona), on bark of a lying, rather hard branch of *Alnus incana*, leg. E. Martini, 14.X.2014 (em-12396) – Gordevio, Saleggio, on wood of a lying, decayed branch of a deciduous tree, leg. E. Martini, 10.IX.1985 (em-314) – Meride, Bolle, on wood of a lying, decayed trunk of *Fagus sylvatica*, leg. E. Martini, 26.XI.2006 (em-9561) – Meride, Cassina, on bark of a lying, rather hard trunk of a deciduous tree, leg. E. Martini, 30.IX.2006 (em-9045) – Meride, Crocifisso, on wood of a lying, rather hard branch of *Fagus sylvatica*, leg. E. Martini, 27.X.2007 (em-10211) – Meride, Fontana, on wood of a lying, decayed branch of *Corylus avellana*, leg. E. Martini, 2.IX.2006 (em-8880) – Meride, Fornace, on wood of a lying, decayed trunk of a deciduous tree, leg. E. Martini, 30.VI.2007 (em-9969) – Meride, Meriggio, on wood of a lying, decayed trunk of *Fagus sylvatica*, leg. E. Martini, 14.X.2006 (em-9178) – Meride, Murgala, on wood of a lying, rather hard trunk of *Prunus avium*, leg. E. Martini, 17.IX.2006 (em-8947) – Meride, Premoran, on wood of a lying, rather hard branch of a deciduous tree, leg. E. Martini, 20.VIII.2006 (em-8816) – Meride, Sermonte, on bark of a lying, rather hard branch of *Fraxinus excelsior*, leg. E. Martini, 11.XI.2004 (em-9532) – Meride, Val Porina, on wood of a lying, decayed branch of *Corylus avellana*, leg. E. Martini, 13.V.2006 (em-8777) – Meride, Veschee, on wood of a lying, strongly decayed branch of a deciduous tree, leg. E. Martini, 22.IX.2007 (em-10095) – Moleno, Boscone, on bark of a decayed branch of a deciduous tree, leg. E. Martini, 20.IV.1986 (em-580) – Mondada, Gramusèd (Valle Bavona), on wood of a lying, rather hard branch of a deciduous tree, leg. E. Martini, 28.VII.2001 (em-7528) – *ibid.*, on bark of a lying, rather hard trunk of *Betula pendula*, leg. E. Martini, 12.XII.2010 (em-10991) – Monte, Campora (acquedotto), on bark of a lying, decayed branch of *Corylus avellana*, leg. F. Delmenico, 17.X.1997 (em-12187) – Monte, Craol, on lying, decayed wood of a deciduous tree, leg. F. Delmenico, 5.XII.2015 (em-12896) – Morbio Inferiore, Valle di Spinee, on bark of a lying, rather hard branch of a deciduous tree, leg. F. Delmenico, 22.VIII.2007 (em-11924) – Morbio Superiore, S. Martino, on bark of a lying, decayed branch of *Ostrya carpinifolia*, leg. F. Delmenico, 5.II.2009 (em-10806) – Novazzano, Valle della Motta, on lying wood of a deciduous tree, leg. E. Zenone, 1.X.1990 (em-2837) – Ritorto, Dréom (Valle Bavona), on bark of a lying, rather hard trunk of *Prunus avium*, leg. E. Martini, 14.VI.2001 (em-7462) – Ritorto, Rivera (Valle Bavona), on wood of a lying, rather hard branch of *Fraxinus excelsior*, leg. E. Martini, 27.X.2015 (em-12814) – Riveo, Saleggi, on bark of a lying, strongly decayed branch of a deciduous tree, leg. E. Martini, 22.V.2005 (em-8576) – Roveredo, Oggiò (Valcolla), on wood of a lying, hard trunk of *Castanea sativa*, leg. E. Martini, 14.IX.1988 (em-1938) – Sabbione, Caslitt (Valle Bavona), on wood of a lying, rather hard trunk of a deciduous tree, leg. E. Martini, 29.IX.2002 (em-8249) – San Carlo, Prèsa (Valle Bavona), on wood of a lying, strongly decayed branch of a deciduous tree, leg. E. Martini, 5.VIII.2008



Fig. 1: Basidiome. Image width = 51 mm [em-10991]

(em-10547) – *Someo*, on wood of a lying, decayed branch of a deciduous tree, leg. E. Martini, 7.VI.1986 (em-541)

References

- [1] BOURDOT, H. AND GALZIN, A. (1928). *Hyménomycètes de France*. Paris. 761 p. URL: <http://bibdigital.rjb.csic.es/ing/Libro.php?Libro=3448>
- [2] HJORTSTAM, K. AND LARSSON, K.-H. (1987). 'Additions to Phlebiella (Corticaceae, Basidiomycetes), with notes on Xenasma and Sistotrema'. *Mycotaxon*, 29: 315–319. URL: <http://www.cybertruffle.org.uk/cyberliber/59575/index.htm>
- [3] STALPERS, J.A. (1996). 'The aphylophoraceous fungi II : Keys to the species of the Hericiales'. *Studies in Mycology*, (40): 1–185



Fig. 2: Detail of the hymenophore. Image width = 9 mm [em-9969]



Fig. 3: Detail of the hymenophore [em-7528]

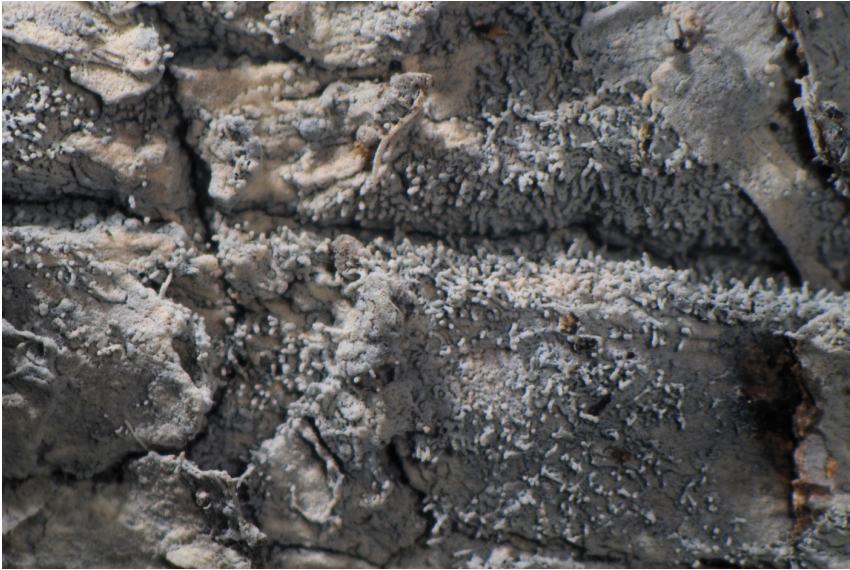


Fig. 4: Hymenophore with digitate processes (= encrusted setae of a hyphomycete). Image width = 9 mm [em-10991]



Fig. 5: Hymenophore with thin threads. Image width = 9.5 mm [em-10991]

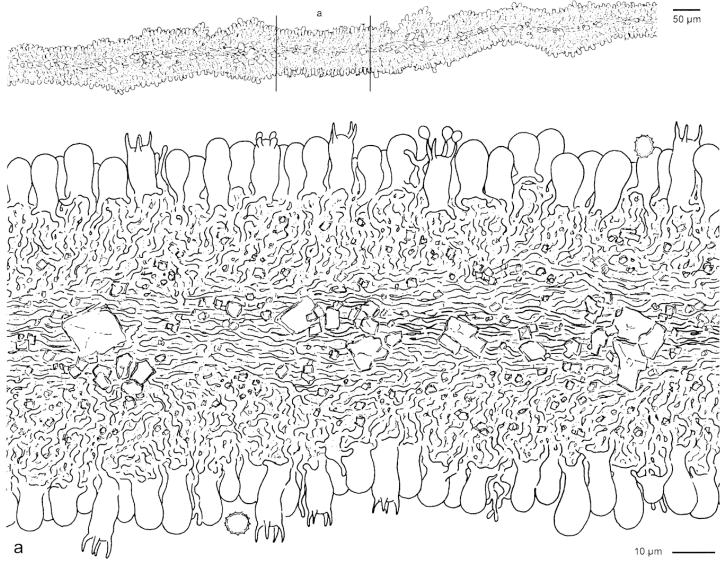


Fig. 6: Section of a thread [em-10991]

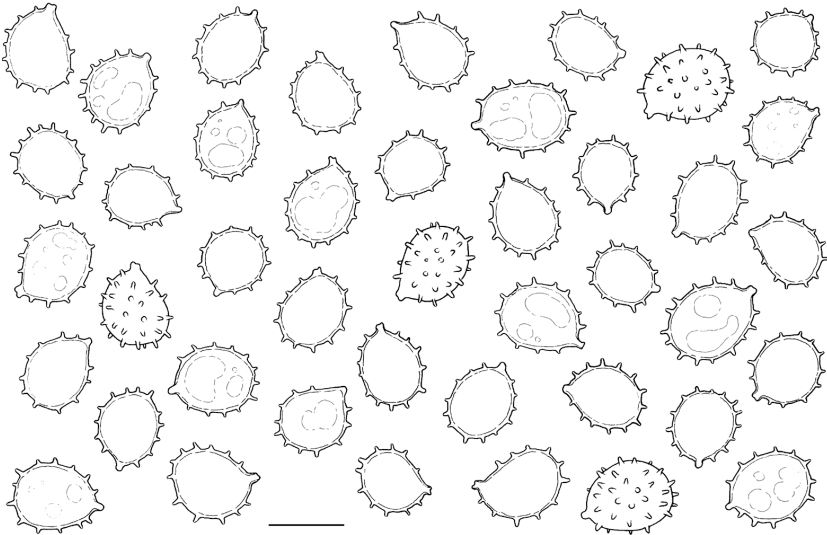


Fig. 7: Basidiospores. Bar = 5 μm [em-10991]

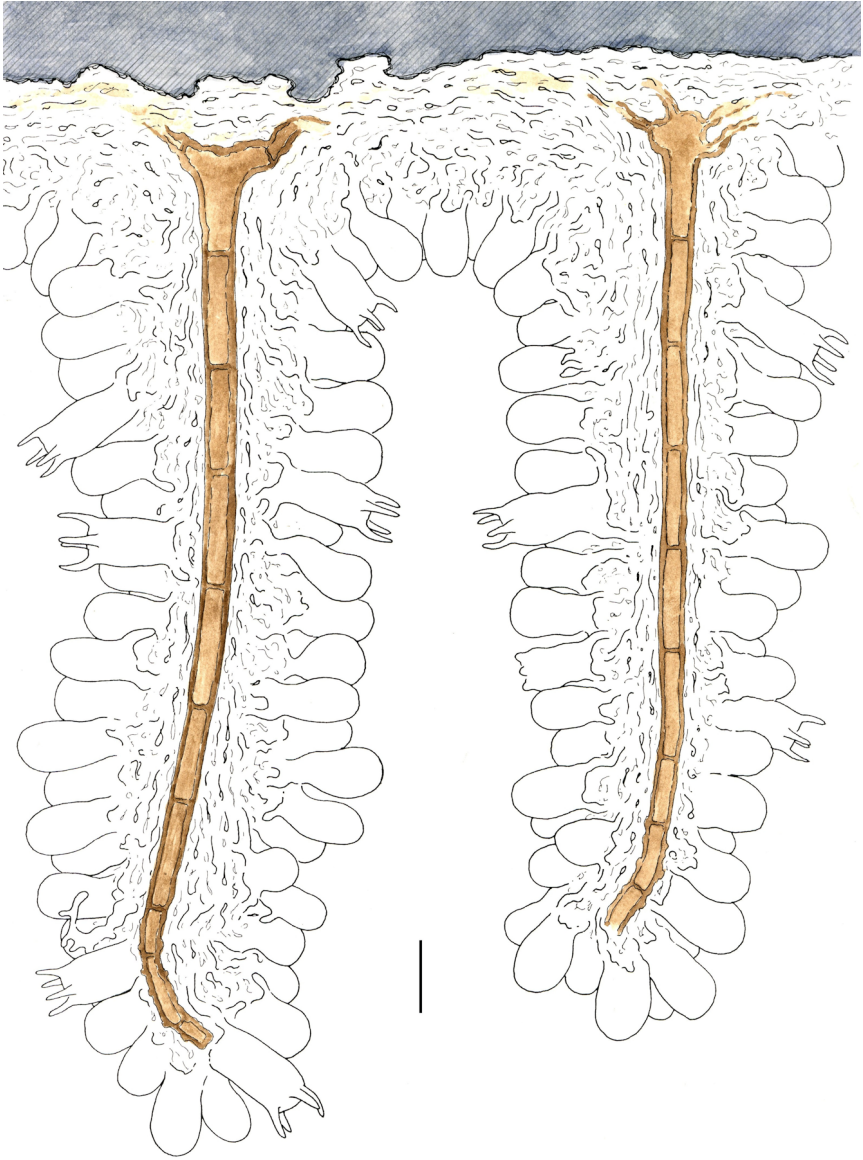


Fig. 8: Section through two pseudoaculei with a setae of a hyphomycete in the core.
Bar = 10 μm [em-10991]



Excerpts from *Crusts & Jells*

Descriptions and reports of resupinate Aphyllophorales and Heterobasidiomycetes

Authored and published by

ELIA MARTINI
Via ai Ciòss 21
CH-6676 Bignasco
Switzerland

Email: emart@aphyllo.net
<http://www.aphyllo.net>



Issue № 29:

Xenasmatella ardosiacae

Released on: 27th April, 2016

© E. Martini

This work is licensed under a [Creative Commons Attribution 4.0 International License \(CC BY 4.0\)](https://creativecommons.org/licenses/by/4.0/)

