

Trechispora cohaerens

Figures 1–7

Sporotrichum cohaerens Schwein. 1832 [3 : 272] \equiv *Trechispora cohaerens* (Schwein.) Jülich & Stalpers 1980 [2 : 257]

Basidiome effused, fragile, soft, loosely adherent to separable.

Hymenophore finely granulose, sometimes slightly colliculose, discontinuous to continuous and pellicular, separable from the subiculum, fragile when dried, whitish to cream or very pale yellow, turning pale yellow when dry.

Subiculum loose, araneose to byssoid, whitish.

Margin often sterile, thinning out and finely fibrillose or fertile and abrupt.

Rhizomorphs normally present at the margin, in cracks of the substrate or in subiculum, up to 0.1 (0.3) mm thick, white.

Hyphal system monomitic; all hyphae with fibulate primary septa, thin-walled, hyaline. Subhymenial hyphae richly branched, mostly regular, sometimes triangular or isodiametric, (2) 2.5–4.5 (8) in diam. Subicular hyphae and of rhizomorphs (1.5) 2–4 (4.5) μm wide, often ampullate at the septa up to 10–16 μm .

Cystidia absent.

Basidia more or less clavate to short cylindrical or slightly botryose, 10–15 \times 4.5–5.5 (6) μm ; 4 sterigmata up to 3.5–4 μm long.

Basidiospores lacrymoid, obovoid, in lateral view with a flattening ad-axial side, (2.5) 3–4 (4.2) \times 2.4–3 (3.2) μm , Q = (1.05) 1.1–1.35 (1.45), smooth, with thickening to thick wall.

Chemical reactions: IKI–; CB: spores slightly cyanophilous.

Incrustation: infrequent to common, often as aggregates or pairs of lancet-like crystals with acuminate tips, rod-like with furcate apex or as irregular plates with fringed margins.

Voucher specimens

FRANCE — **Alpes-Maritimes** – Ile Sainte-Marguerite, on strongly decayed wood of *Pinus sp.*, leg. E. & F. Martini, 31.X.1997 (em-6413) — **Pyrénées-Orientales** – Serdinya, Riv.de Baillmarsane, on wood of a lying, decayed branch of *Pinus sp.*, leg. E. & F. Martini, 28.X.1995 (em-4051.1) — **Seine-et-Marne** – Forêt de Fontainebleau, Gorge aux Loups, parcelle 527, on wood of a lying, decayed trunk of a deciduous tree, leg. E. Martini, 31.X.2006 (em-9379) – Forêt de Fontainebleau, La Tillaie, parcelle 270, on wood of a lying, strongly decayed trunk of a deciduous tree, leg. E. Martini, 1.XI.2006 (em-9395) – Forêt de Fontainebleau, Le Gros Foueteau, parcelle 268, on litter, leg. E. Martini, 2.XI.2006 (em-9386)

GERMANY – Ludwigswinkel, reserve d'Adelsberg Lützelhard, on wood of a lying, strongly decayed branch of *Picea abies*, leg. E. Martini, 26.X.2009 (em-10988)

LIECHTENSTEIN – Ruggell, Brüchliswald, on wood of a strongly decayed stump of a coniferous tree, leg. E. Martini, 5.X.1995 (em-5744)

SWITZERLAND — **Fribourg** – Neyruz, Bois des Morts, on wood of a decayed trunk of *Picea abies*, leg. E. Martini, 1.X.1998 (em-6677) — **Ticino** – Ascona, Monte Verità, on wood of a lying, decayed branch of *Quercus sp.*, leg. E. Zenone, 3.II.1988 (em-1571) – Biasca, Mairano, on hanging, strongly decayed basidiome of a polypore, leg. E. Martini, 18.IV.2009 (em-10820) – Bignasco, Ganne, on lying, decayed wood of a deciduous tree, leg. E. Martini, 23.VIII.1987 (em-1113) – Bignasco, Raneè, on inner side of bark of a lying, rather hard stump of *Castanea sativa*, leg. E. Martini, 11.VIII.1996 (em-4276) – Gordevio, Saleggio, on bark of a lying, decayed trunk of *Pinus sylvestris*, leg. E. Martini, 3.X.2005 (em-8629) – Maggia, Saligin, on bark of a lying, decayed trunk of *Pinus sp.*, leg. E. Martini, 28.VIII.2011 (em-11613) – Meride, Bagno, on bark of a lying, rather hard trunk of *Prunus avium*, leg. E. Martini, 2.VI.2007 (em-9864) – Meride, Bolle, on wood of a lying, decayed trunk of a deciduous tree, leg. E. Martini, 21.X.2006 (em-9257) – *ibid.*, on leaves of *Fagus sylvatica*, leg. E. Martini, 21.X.2006 (em-9235) – Meride, Cassina, on litter, leg. E. Martini, 30.IX.2006 (em-8984) – Meride, Murgala, on litter, leg. E. Martini, 17.IX.2006 (em-8913) – Meride, Serpiano, on litter, leg. E. Martini, 14.X.1994 (em-3851) – Meride, Vallinera, on wood of a lying, rather hard twig of *Hedera helix*, leg. E. Martini, 3.II.2007 (em-9712) – *ibid.*, on bark of a lying, rather hard branch of *Prunus avium*, leg. E. Martini, 3.II.2007 (em-9694) – Minusio, on a standing, hard twig of *Phyllostachys sp.*, leg. E. Zenone, 13.XII.1992 (em-3455) – Mondada, Gramusèd (Valle Bavona), on wood and bark of a lying, decayed trunk of *Tilia cordata*, leg. E. Martini, 20.VIII.1989 (em-2361) – Preonzo, Aldan, on bark of a lying, rather hard branch of *Corylus avellana*, leg. E. Zenone, 5.XII.2000 (em-7248) – Ritorto, Prèda (Valle Bavona), on bark of a lying, decayed branch of *Corylus avellana*, leg. E. Martini, 6.VIII.2011 (em-11575) – Someo, on wood of a strongly decayed stump of a coniferous tree, leg. E. Martini, 27.VIII.2005 (em-8618) – Val Piora, Larici di Campo, on lying, rather hard stems of *Athyrium filix-femina*, leg. E. Martini, 16.X.2010 (em-11469)

References

- [1] BERNICCHIA, A. AND GORJÓN, S.P. (2010). 'Corticiciaeae s. l.' *Fungi Europaei*, 12: 1008 p.
- [2] JÜLICH, W. AND STALPERS, J.A. (1980). *The resupinate non poroid Aphylophorales of the temperate northern hemisphere*. Amsterdam. 335 p.
- [3] SCHWEINITZ, L.D. (1832). 'Synopsis Fungorum in America boreali media degentium'. *Transactions of the American Philosophical Society*, n.s., 4 (2): 141–316.
URL: <http://www.biodiversitylibrary.org/item/86416#page/195>

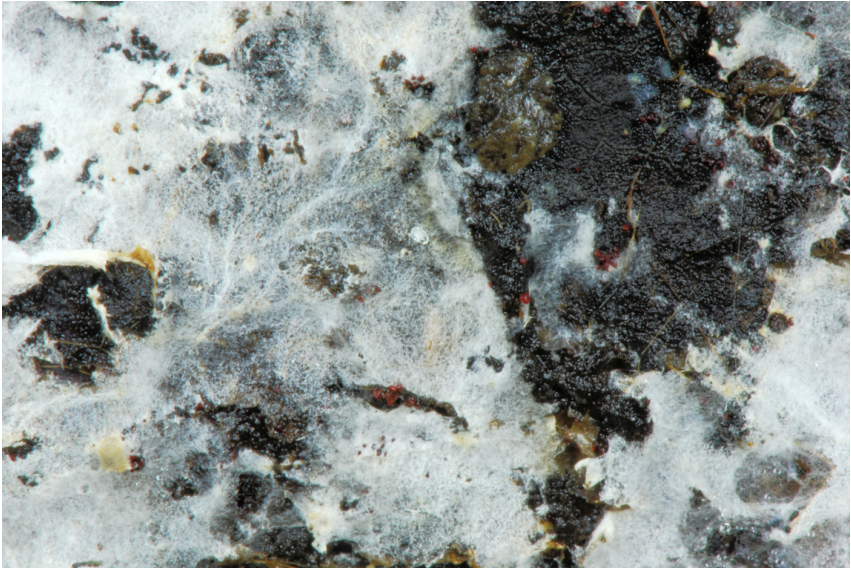


Fig. 1: Basidiome. Image width = 22 mm [em-11575]



Fig. 2: Hymenial surface. Image width = 11 mm [em-8618]



Fig. 3: Basidiome showing a strongly tuberculate-coliculose part of the hymenophore and a fibrillose subiculum. Image width = 9 mm [em-11613]

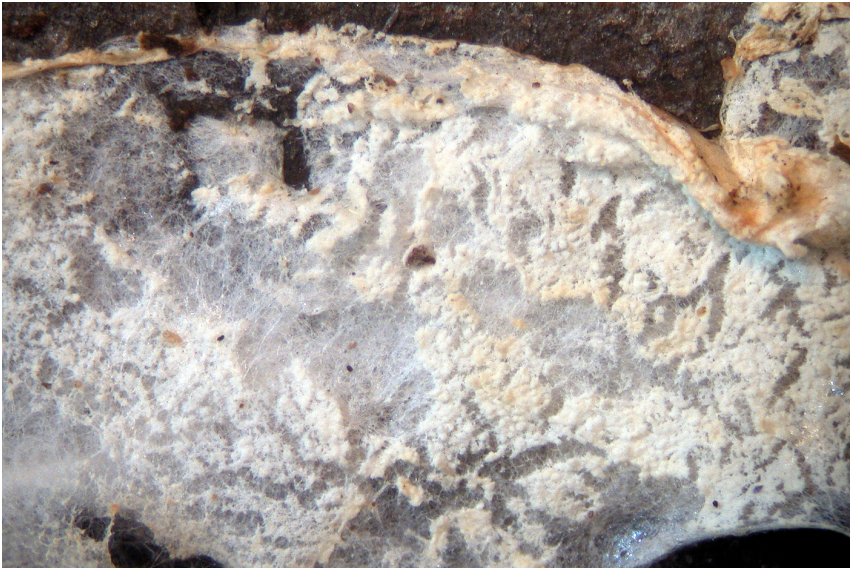


Fig. 4: Dried basidiome [em-9694]



Fig. 5: Basidiome showing rhizomorphs next to the substrate. Image width = 9 mm [em-11575]



Fig. 6: Basidiome toward the margin. Image width = 11 mm [em-8618]

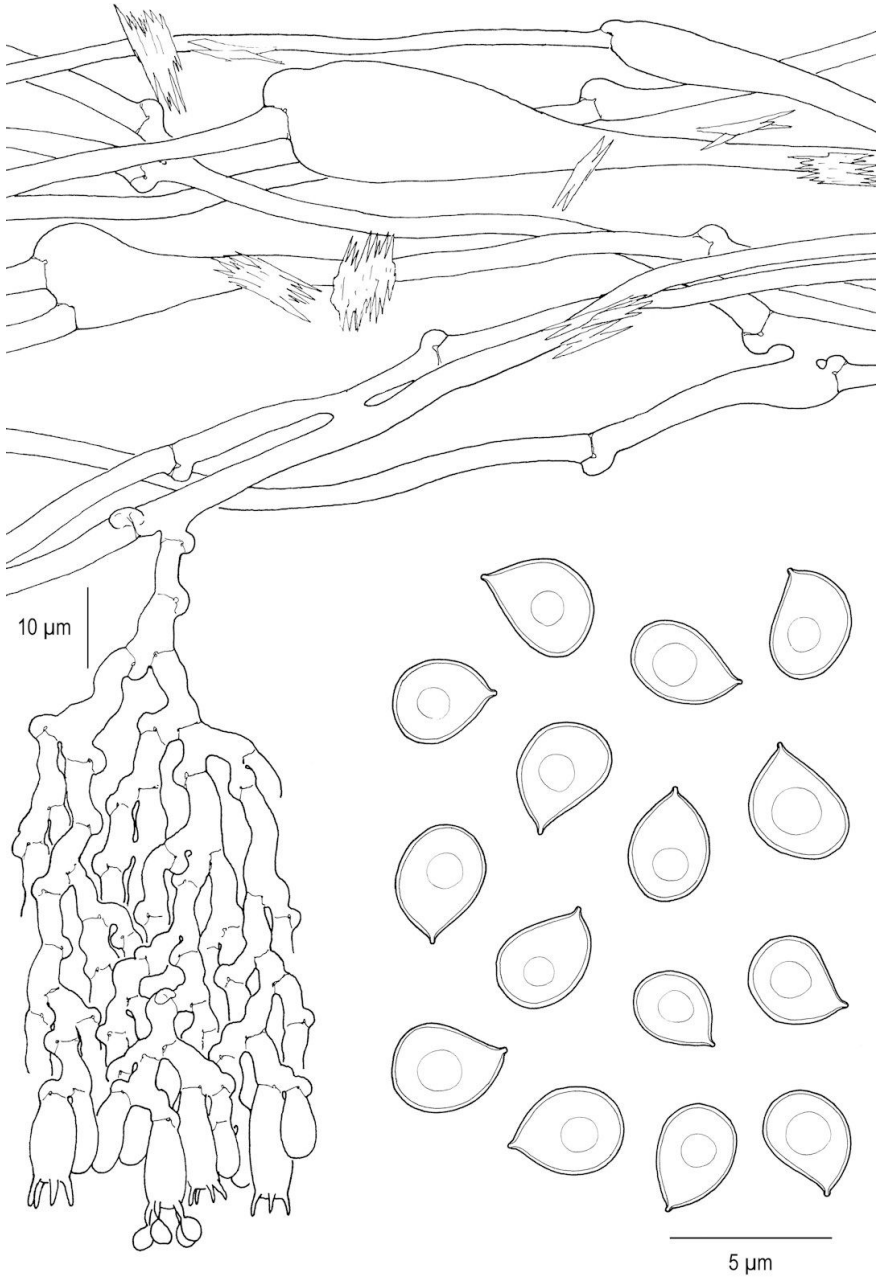


Fig. 7: Basidia, subhymenial and subicular hyphae, crystals, basidiospores [em-11613]



Excerpts from *Crusts & Jells*

Descriptions and reports of resupinate Aphyllophorales and Heterobasidiomycetes

Authored and published by

ELIA MARTINI
Via ai Ciòss 21
CH-6676 Bignasco
Switzerland

Email: emart@aphyllo.net
<http://www.aphyllo.net>



Issue № 25:

Trechispora cohaerens

Released on: 27th April, 2016

© E. Martini

This work is licensed under a [Creative Commons Attribution 4.0 International License \(CC BY 4.0\)](https://creativecommons.org/licenses/by/4.0/)

