

Xylobolus subpileatus (Berk. & M.A. Curtis) Boidin

Figures 1–8

Stereum subpileatum Berk. & M.A. Curtis 1849 [1 : 238] ≡ *Lloydella subpileata* (Berk. & M.A. Curtis) Höhn. & Litsch. 1907 [3 : 757] ≡ *Xylobolus subpileatus* (Berk. & M.A. Curtis) Boidin 1958 [2 : 341] ≡ *Stereum frustulatum* var. *subpileatum* (Berk. & M.A. Curtis) A.L. Welden 1971 [4 : 64]

Basidiome annual or perennial, effused-reflexed to pileate, coriaceous, though membranaceous, firm when dry.

Pileus semicircular, dimidiate, flabelliform, up to 5 cm across, 1–2 mm thick in the pileate portion, up to 4 mm thick at the relatively narrow (1–2 cm wide) point of attachment.

Pileal surface zonate by different textures alternating smooth, scrupose, porulose, reticulate, pubescent, tomentose, hirsute parts, sometimes with radiately oriented irregular irpicoid plates or conical outgrowths, pale brown, ochraceous to mostly uniformly brown.

Hymenial surface mostly smooth, rather light greyish brown, distinctly paler toward the margin.

Margin of pileus sharp, entire, narrow, paler, white when fresh, yellow when dry.

In section showing four more or less distinct layers:

- **tomentum** 0.5–2 mm thick, build by pseudoskeletal hyphae 3.5–5.5 (6) µm diam, thick-walled, with some simple septa, often with narrow lumen, distinct or agglutinate, ochre brown;
- **cortex** 0.1–0.2 mm thick, continuous or in plates, distinct or indistinct in younger parts, built up by nodules of entangled, sinuous, richly branched hyphae arranged in all directions, 1.5–3.5 µm diam, thick-walled, brown;
- **context** less than 1 mm thick, pale toward the cortex, progressively becoming darker toward the hymenophore; individual hyphae of two kinds: 1) generative simple-septate, 2–4 µm diam, with thin or thickening walls

(0.3–0.8 μm), rather frequent and distinct and mixed with 2) pseudo-skeletal hyphae 4–5 μm diam, with thick to solid walls, subhyaline to ochraceous then brownish near the subhymenium, becoming like those of the tomentum and partially entering in subhymenium;

- **hymenophore** single or pluri-stratified with each layer about 0.1 mm thick, older strata brown, active one pale brown; individual hyphae in subhymenium simple-septate, 2–3 μm diam, with thin to thickening walls, distinct, mixed between cystidia, skeletoid hyphae of tramal origin and acanthohyphidia.

Cystidia of two types:

- **acanthohyphidia** of hymenial origin, 20–50 (60) \times (2.5) 3–4.5 (5) μm , smooth when young, mostly with 0.5–2 μm long and 0.6–1.2 μm wide outgrowths, unevenly distributed on the upper half;

- **skeletoid pseudocystidia** of subhymenial or tramal origin, 40–200+ \times 3–6 μm , apex obtuse or slightly narrowed, walls 0.5–2.2 μm thick, almost thin-walled at apex, subhyaline to ochraceous, content of the top part granulose or oily.

Basidia rare, apparently only as an apical renewed growth of acanthohyphidia, 30–50 \times 3.8–4.4 μm , thick-walled excepting the apex which is just a little bit wider and thin-walled, producing 4 sterigmata 3.5–4 μm long and 0.8–1.2 μm wide at the base.

Basidiospores (ex spore-print) ellipsoid, (3.7) 3.9–4.7 (5.0) μm long, 2.5–3.0 (3.1) μm in side view, $Q = 1.4–1.6$ (1.7), smooth, with thickening walls 0.3–0.4 (0.5) μm , hyaline but with ochre content, amyloid.

Specimen examined

SWITZERLAND — **Ticino** – **Barbengo**, on wood on a hanging sleeper of a broadleaved tree (*Quercus sp.?*), leg. Gianfelice Lucchini, 30.X.2023 (em-14652)

Materials and methods

Specimens sampling and methodological details are described separately in this issue:
Excerpts from *Crusts & Fells*, n° 0



Fig. 1: Basidiome (dry). Bar = 5 mm [em-14652]



Fig. 2: Vertical section through the basidiome. Image width = 18 mm [em-14652]



Fig. 3: Detail of the pileal surface [em-14652]



Fig. 4: Vertical section through the basidiome. Bar = 0.2 mm [em-14652]

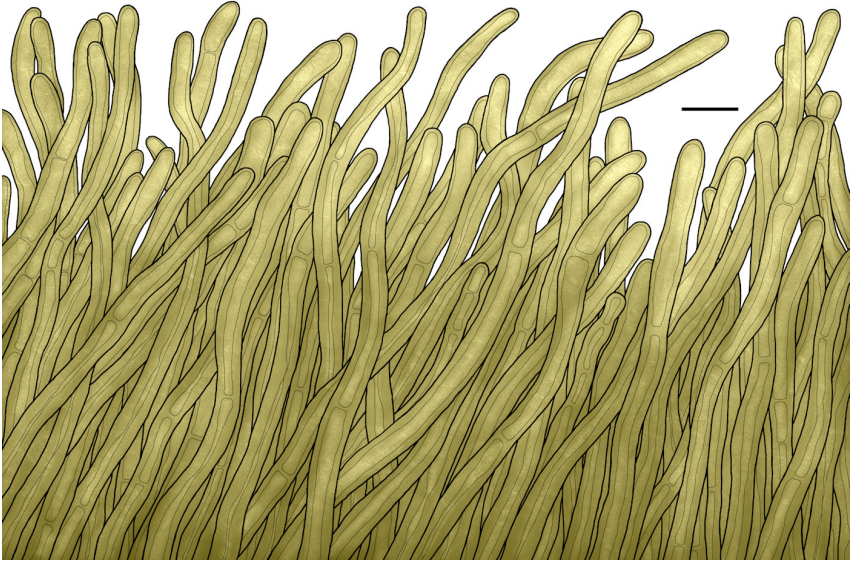


Fig. 5: Section of pileal surface (tomentum). Bar = 10 μm [em-14652]

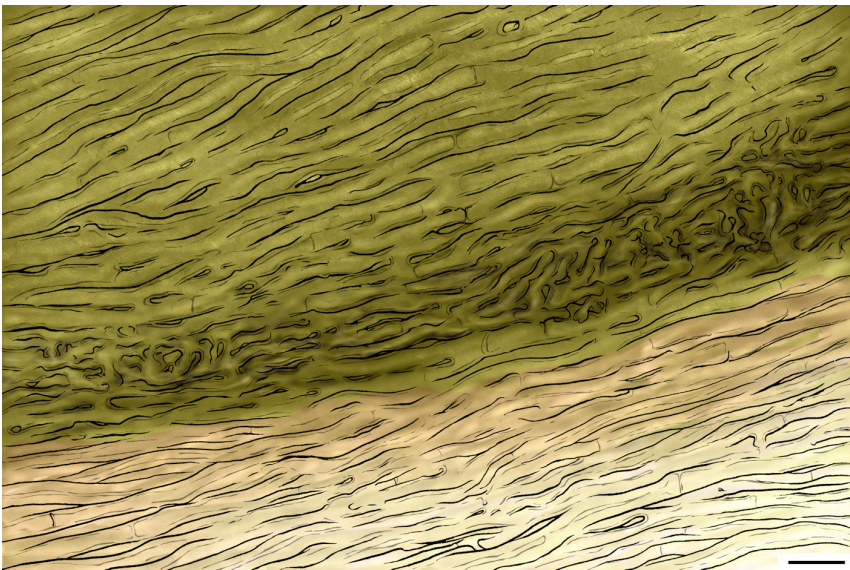


Fig. 6: Cortex between tomentum (above) and context (below). Bar = 10 μm [em-14652]



Fig. 7: Vertical section through hymenium. Bar = 10 μm [em-14652]

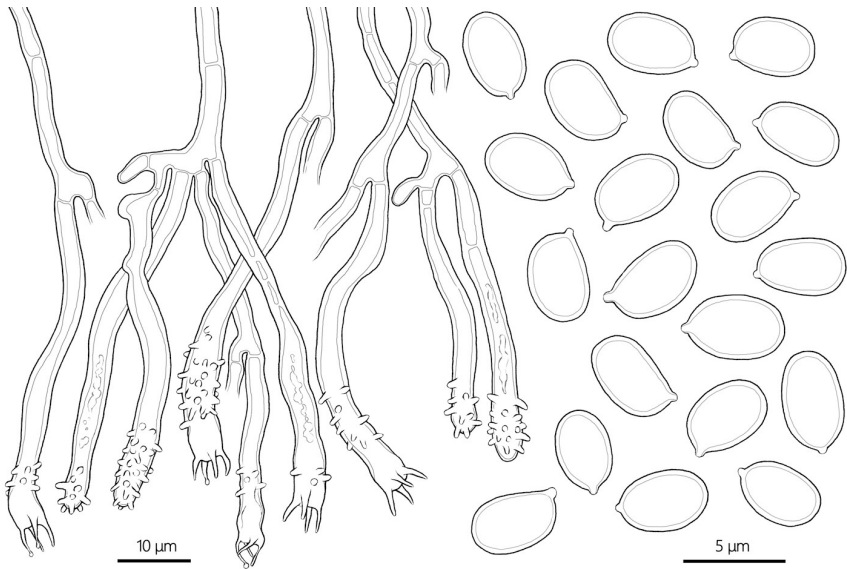


Fig. 8: Basidia, acanthohyphidia, basidiospores. Bar = 10 μm [em-14652]

References

- [1] BERKELEY, M.J. AND CURTIS, M.A. (1849). 'Decades of fungi. Decades XXIII and XXIV. North and South Carolina Fungi'. *Hooker's Journal of Botany and Kew Garden Miscellany*, 1: 234–239. URL: <http://www.biodiversitylibrary.org/item/39789#page/237/>
- [2] BOIDIN, J. (1958). 'Hétérobasidiomycètes saprophytes et Homobasidiomycètes résupinés. V. Essai sur le genre *Stereum* Pers.ex S.F.Gray'. *Revue de Mycologie (Paris)*, 23 (3): 318–346
- [3] HÖHNEL, F.X.R. VON AND LITSCHAUER, V. (1907). 'Beiträge zur Kenntnis der Corticieen. II. Mitteilung'. *Sitzungsberichte der Kaiserlichen Akademie der Wissenschaften. Mathematisch-naturwissenschaftliche Klasse*, 116: 739–852. URL: <http://www.biodiversitylibrary.org/item/31621#page/821/>
- [4] WELDEN, A.L. (2010). '*Stereum* s.l.' *Flora Neotropica*, 106: 1–80. URL: <http://www.jstor.org/stable/20749542>



Excerpts from *Crusts & Tells*

Descriptions and reports of resupinate Aphyllophorales and Heterobasidiomycetes

Authored and published by

ELIA MARTINI
Via ai Ciòss 21
CH-6676 Bignasco
Switzerland

Email: emart@aphyllo.net
<https://www.aphyllo.net>
Orcid: 0000-0002-4709-2964



Issue № 200:

Xylobolus subpileatus (Berk. & M.A. Curtis) Boidin

Released on: 1st April, 2026

© E. Martini

This work is licensed under a [Creative Commons Attribution 4.0 International License \(CC BY 4.0\)](https://creativecommons.org/licenses/by/4.0/)

