

Thelephora microspora

(P. Karst.) Kõljalg, I. Saar & Svantesson

Figures 1–6

Hypochnus microsporus P. Karst. 1896 [2 : 174] H! ≡ *Tomentella microspora* (P. Karst.) Höhn. & Litsch. 1906 [1 : 1571] ≡ *Thelephora microspora* (P. Karst.) Kõljalg, I. Saar & Svantesson 2024 [3 : 79]

Basidiome effused, adherent, tomentose to rather compact.

Hymenophore continuous, smooth to shallowly tuberculated, ochraceous or light olive brown to brown with a light reddish hue (2.5Y–5YR 5/4), with parts greyish brown (2.5YR 5–4/2) or becoming dark greyish brown (10YR 3/2).

Subhymenium thickening, becoming darker than the fertile surface (up to 2.5YR 3/2).

Subiculum araneous to somewhat tomentose, poorly developed, yellowish to ochraceous.

Margin sterile or almost so, shortly or indefinitely thinning out, yellowish to ochraceous (10YR 7/6).

Rhizomorphs infrequent, compact, fragile, up to 0.1 (0.2) mm thick, smooth to byssoid, yellowish to ochraceous.

Hyphal system monomitic; all hyphae with fibulate primary septa; simple and adventitious septa scattered in subicular and rhizomorphal hyphae.

Subicular hyphae regular, fibulate, 5–6 µm wide, with thickening or thick-walls, yellowish to ochraceous.

Subhymenial hyphae regular, (3) 4–6 (7) µm wide, with thin walls, subhyaline to pale yellowish brown.

Rhizomorphs simple, not structured, built up by relatively loosely arranged hyphae 3–7 µm in diam, subhyaline to light yellowish.

Cystidia absent.

Basidia subcylindrical to slightly utriform, 40–55 µm long, 9–11 µm wide at top, 7–10 µm at the lower middle, subhyaline to pale yellowish brown;

4 sterigmata, 6–8 μm long and 1.5–2.5 μm wide at the base.

Basidiospores irregular, slightly lobed, mostly indistinctly warty and becoming 'multilobed', elongated, aculeolate to echinulate, not guttulate, wall 0.3–0.6 μm thick, yellowish brown; 6.0–[6.8]–7.4 (8.0) μm long; **lateral** face irregularly ellipsoid to slightly 3–5 lobed dorsally, adaxial side flattening. (4.2) 4.4–[4.8]–5.4 (6.0) μm diam, $Q = (1.13) 1.23$ –[1.40]–1.52 (1.63); **frontal** face irregularly ellipsoid-elongated or narrowly ovoid, indistinctly 3–6-lobed, (4.8) 5.0–[5.44]–6.0 μm diam, $Q = (1.10) 1.17$ –[1.25]–1.36 (1.41) ($n = 49$); in **polar** view irregularly globose.

Aculei 0.3–0.6 (0.7) μm long, 0.3–0.6 (0.7) μm wide at base, blunt, single or paired at the base, often in indistinct crowns over flattened mounds.

Apiculus lateral toward the base of the spore, 0.5–1.4 μm across; hilum indistinct.

Macrospores infrequent, 9–10 μm long, not differentiated.

Chlamydospores absent.

Incrustation: older parts with olivaceous, dark greenish, bluish, bluish-black matter in hymenium and subhymenium visible in water and LA mounts, dissolving and sometimes turning elements somewhat olivaceous to grey-green.

Chemical reactions: IKI—, CB: not tested. KOH: hymenium and subhymenium assuming a distinct olivaceous or greenish hue, without enhanced reaction in presence of air.

Specimen examined

FINLAND – Mustiala, in cort. Alni, leg. P.A. Karsten, 13.X.1886, lectotype of *Hypochnus microsporus* P. Karst. (K PAK 596)

Materials and methods

Specimens sampling and methodological details are described separately in this issue: Excerpts from *Crusts & Jells*, n° 0

References

- [1] HÖHNEL, F.X.R. VON AND LITSCHAUER, V. (1906). 'Beiträge zur Kenntnis der Corticieen, I. *Sitzungsberichte der Kaiserlichen Akademie der Wissenschaften. Mathematisch-naturwissenschaftliche Klasse*, 115: 1549–1620. URL: <http://www.biodiversitylibrary.org/item/110873#page/1751/>
- [2] KARSTEN, P.A. (1896). 'Fragmenta mycologica XLIV [2]'. *Hedwigia*, 35 (4): 173–174. URL: <http://www.biodiversitylibrary.org/item/13878#page/215>
- [3] KÖLJALG, U., SAAR, I. AND SVANTESSON, S. (2024). 'Merging the genus *Tomentella* with *Thelephora*'. *Folia Cryptogamica Estonica*, 61: 67–86. DOI: [10.12697/fce.2024.61.09](https://doi.org/10.12697/fce.2024.61.09)



Fig. 1: Basidiome; ex lectotype of *Hypochnus microsporus* P. Karst. Image width = 11 mm [K PAK 596]



Fig. 2: Basidiome; ex lectotype of *Hypochnus microsporus* P. Karst. Image width = 11 mm [K PAK 596]



Fig. 3: 'Old' basidiome with rhizomorphs; ex lectotype of *Hypochnus microsporus* P. Karst. Image width = 10 mm [K PAK 596]



Fig. 4: Rhizomorphs; ex lectotype of *Hypochnus microsporus* P. Karst. Bar = 1 mm [K PAK 596]



Fig. 5: Hyphae of a rhizomorph; ex lectotype of *Hypochnus microsporus* P. Karst. Bar = 10 μm [K PAK 596]

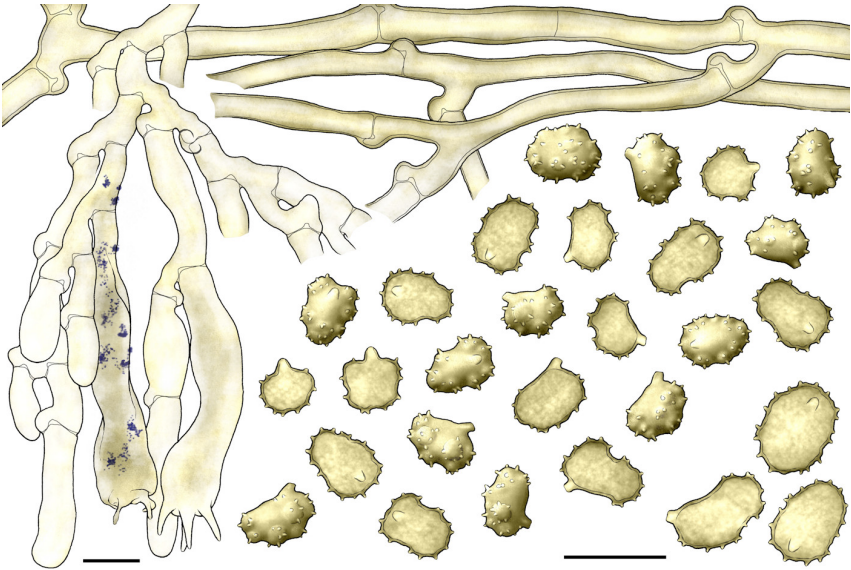


Fig. 6: Basidia, subhymenial and subicular hyphae, basidiospores, as seen in water (3 macrospores in the lower right corner); ex lectotype of *Hypochnus microsporus* P. Karst. Bar = 10 μm [K PAK 596]



Excerpts from *Crusts & Tells*

Descriptions and reports of resupinate Aphyllophorales and Heterobasidiomycetes

Authored and published by

ELIA MARTINI
Via ai Ciöss 21
CH-6676 Bignasco
Switzerland

Email: emart@aphyllo.net
<https://www.aphyllo.net>
Orcid: 0000-0002-4709-2964



Issue № 199:

Thelephora microspora (P. Karst.) Kõljalg, I. Saar &
Svantesson

Released on: 1st March, 2026

© E. Martini

This work is licensed under a [Creative Commons Attribution 4.0 International License \(CC BY 4.0\)](https://creativecommons.org/licenses/by/4.0/)

