

Thelephora cladii

(Wakef.) Køljalg, I. Saar & Svantesson

Figures 1–4

Tomentella cladii Wakef. 1969 [3 : 179] K! ≡ *Thelephora cladii* (Wakef.) Køljalg, I. Saar & Svantesson 2024 [1 : 72]

Basidiome effused, as confluent small patches, adherent, soft tomentose, up to 0.2 (0.3) mm thick.

Hymenophore granulose to somewhat colliculose, becoming continuous, pale brown (10YR 6/3) to brown (10YR 5/3), some small parts becoming dark greyish brown (10YR 4/2).

Subhymenium thickening, compact, brown to dark brown (10YR 5–4/3), darker than the hymenial surface.

Subiculum indistinct, almost absent.

Margin fertile throughout, abrupt or shortly thinning out, pruinose, porulose, granulose, concolour with the fertile area.

Rhizomorphs absent.

Hyphal system monomitic; all hyphae with fibulate primary septa.

Subicular hyphae few, regular, 3–4 (4.5) µm wide, sometimes branching from clamps, with slightly thickening walls, subhyaline to pale yellowish brown or pale brown.

Subhymenial hyphae irregular, 3.5–6 (8) µm wide, often faintly torose and short-celled, soon with slightly thickening walls, subhyaline to pale yellowish brown or pale brown.

Cystidia absent.

Basidia immature mostly subcylindrical to clavate, rarely ovoid or ellipsoid, then subcylindrical to utriform, mostly collapsed, 30–40 µm long, 7.5–9 (9.5) µm diam at top, 4–8 µm wide at the lower middle, subhyaline, sometimes with pale yellowish brown or pale brown content; 4 sterigmata up to 5 (6) µm long and 1.5–2 µm wide at the base.

Basidiospores regular to slightly irregular, echinulate, thickwalled, yellowish brown to brownish; (7.6) 8.0–[8.7]–9.6 µm long; **lateral** face ellipsoid to obliquely ovoid, with a flattening adaxial side, (6.2) 6.4–[7.1]–7.8

(8.0) μm diam, $Q = (1.11) 1.14\text{--}[1.23]\text{--}1.32 (1.34)$; **frontal** face ellipsoid to ovoid, (7.0) $7.2\text{--}[7.8]\text{--}8.4 (9.0)$ μm diam, $Q = (1.05) 1.08\text{--}[1.13]\text{--}1.18 (1.23)$; in **polar** view globose to subglobose.

Aculei $0.7\text{--}[1.0]\text{--}1.3$ μm long, $0.4\text{--}[0.6]\text{--}0.7$ μm wide at base, terete, tapering, single or rarely paired at the base, unevenly distributed.

Apiculus $1.3\text{--}[1.7]\text{--}2.2$ μm across, inamyloid; hilum indistinct.

Macrospores rare, about $11\times 8\text{--}9$ μm .

Chlamydospores absent.

Incrustation: brown to bluish grey granules and unshaped matter present here and there in water mounts, dissolving in KOH.

Chemical reactions: IKI—, CB: not tested. KOH: hymenium p.p. cyanescent (bluish-black diffuse pigmentation) but without a distinct reaction in presence of air.

Specimen examined

UNITED KINGDOM — **England** – Wheatfen Broad, on *Cladium mariscus*, leg. M.B. Ellis, 4.VIII.1947, holotype of *Tomentella cladii* Wakef. (K(M) 69196)

Materials and methods

Specimens sampling and methodological details are described separately in this issue:
Excerpts from *Crusts & Fells, n° 0*

References

- [1] KÖLJALG, U., SAAR, I. AND SVANTESSON, S. (2024). ‘Merging the genus *Tomentella* with *Thelephora*’. *Folia Cryptogamica Estonica*, 61: 67–86. DOI: [10.12697/fce.2024.61.09](https://doi.org/10.12697/fce.2024.61.09)
- [2] LARSEN, M.J. (1974). ‘A contribution to the taxonomy of the genus *Tomentella*’. *Mycologia Memoirs*, 4: 1–145
- [3] WAKEFIELD, E.M. (1969). ‘*Tomentelloideae* in the British Isles’. *Transactions of the British Mycological Society*, 53 (2): 161–206. DOI: [10.1016/S0007-1536\(69\)80053-7](https://doi.org/10.1016/S0007-1536(69)80053-7)



Fig. 1: Basidiome; ex holotype of *Tomentella cladii* Wakef. Image width = 12 mm
[K(M) 69196]



Fig. 2: Basidiome; ex holotype of *Tomentella cladii* Wakef. Image width = 12 mm
[K(M) 69196]



Fig. 3: Basidia, subhymenial and subicular hyphae; ex holotype of *Tomentella cladii* Wakef. Bar = 10 μ m [K(M) 69196]

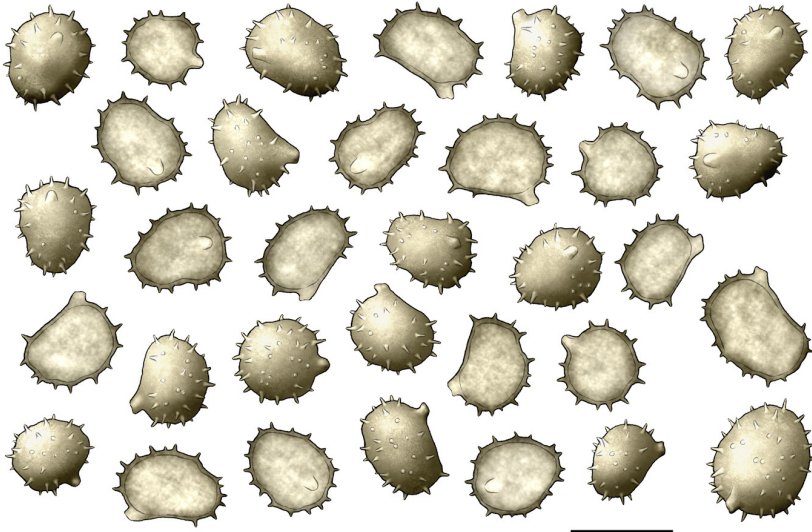


Fig. 4: Basidiospores; two macrospores on the lower right corner; ex holotype of *Tomentella cladii* Wakef. Bar = 10 μ m [K(M) 69196]



Excerpts from *Crusts & Tells*

Descriptions and reports of resupinate Aphyllophorales and Heterobasidiomycetes

Authored and published by

ELIA MARTINI
Via ai Ciöss 21
CH-6676 Bignasco
Switzerland

Email: emart@aphyllo.net
<https://www.aphyllo.net>
Orcid: 0000-0002-4709-2964



Issue № 198:

Thelephora cladii (Wakef.) Kõljalg, I. Saar &
Svantesson

Released on: 1st February, 2026

© E. Martini

This work is licensed under a [Creative Commons Attribution 4.0 International License \(CC BY 4.0\)](https://creativecommons.org/licenses/by/4.0/)

