

№ 197

*Thelephora eulateritia*

Kõljalg, I. Saar &amp; Svantesson

Figures 1–6

*Thelephora eulateritia* Kõljalg, I. Saar & Svantesson 2024 [1 : 77]

≡ *Tomentella lateritia* Pat. 1894 [2 : 221] ≡ *Thelephora lateritia* (Pat.) Sacc. 1895 [3 : 117] ≡ *Hypochnus lateritius* (Pat.) Sacc. & P. Syd. 1899 [4 : 227]

**Basidiome** effused, adherent, discontinuous to confluent, soft tomentose, up to 0.1 (0.2) mm thick.

**Hymenophore** tufted, porulose to granulose, becoming continuous and smooth in small parts, orange brown to reddish brown (5YR 5–4/4–5).

**Subhymenium** thin, relatively compact.

**Subiculum** mostly indistinct, araneous, loose.

**Margin** fertile throughout, indistinct, thinning out, pruinose, porulose, araneous.

**Rhizomorphs** absent.

**Hyphal system** monomitic; all hyphae with fibulate primary septa, scattered simple or adventitious septa may be present in subicular hyphae.

**Subicular hyphae** regular or almost so, loosely arranged in all directions, (2) 2.5–3.8 (4.1)  $\mu\text{m}$  diam, relatively short-celled (20–70  $\mu\text{m}$ ), subhyaline to pale yellowish brown, walls 0.4–0.6 (0.7)  $\mu\text{m}$ .

**Subhymenial hyphae** regular or almost so, distinct but compactly arranged, (2,3) 2.5–4.7 (4.9)  $\mu\text{m}$  diam, hyaline or subhyaline, often with yellow to ochre-orange content fading to pale ochre or pale brown in KOH, walls 0.3–0.5  $\mu\text{m}$  thick.

**Cystidia** absent.

**Basidioles** mostly cylindrical, (3,3) 3.4–5.7 (6.2)  $\mu\text{m}$  diam.

**Basidia** narrowly clavate to clavate, sinuous, often with yellow to red content in water, 35–57 (63)  $\mu\text{m}$  long, 6.2–8.0 (8.4)  $\mu\text{m}$  diam at top, 3.8–5.2 (5.5)  $\mu\text{m}$  wide at the lower middle. (2) 4 sterigmata 4–7  $\mu\text{m}$  long and 1.4–2.0  $\mu\text{m}$  wide at the base.

**Basidiospores** mostly irregular to sublobed, almost never lobed, echinulate, without crowns, without guttulae, wall 0.2–0.6 (0.7)  $\mu\text{m}$  thick, ochraceous, in water often with a light reddish tint; (7.4) 7.6–[8.08]–8.8  $\mu\text{m}$  long; **lateral** face irregularly ellipsoid to obliquely obpyriform, rarely slightly 3-lobed dorsally, adaxial side flattening or slightly convex, 5.6–[6.23]–6.6 (6.8)  $\mu\text{m}$  diam,  $Q = (1.21) 1.25$ –[1.30]–1.34 (1.43); **frontal** face irregularly ovoid to slightly 3-lobed, 6.8–[7.24]–7.6 (8.0)  $\mu\text{m}$  diam,  $Q = 1.05$ –[1.12]–1.17 (1.19); in **polar** view irregularly globose to slightly 3-lobed.

**Aculei** (0.7) 0.8–1.5  $\mu\text{m}$  long, 0.4–0.8  $\mu\text{m}$  wide at base, terete, tapering, single or rarely paired at the base, unevenly distributed.

**Apiculus** lateral near the base in side view, 1.2–2.0  $\mu\text{m}$  across, inamyloid; hilum indistinct.

**Macrospores** rare, about 10–10.5 $\times$ 7–8  $\mu\text{m}$ , of normal shape. absent.

**Incrustation:** hymenial and subhymenial elements with yellow, orange, red adhering resinous matter dissolving in KOH mounts.

**Chemical reactions:** IKI —. CB: thin walled elements apparently cyanophilous, walls of spores acyanophilous. KOH —

## Specimens examined

TUNISIA – El Feidja, bois carbonisé de *Q. suber*, I.1893, holotype of *Tomentella lateritia* Pat. (FH: Patouillard herb., sheet 3608) – *ibid.*, bois carbonisé de *Quercus suber*, leg. Patouillard, I.1893, isotype of *Tomentella lateritia* Pat. (PC: herb. gén.)

## Materials and methods

Specimens sampling and methodological details are described separately in this issue:

Excerpts from *Crusts & Fells, n° 0*

## References

- [1] KÖLJALG, U., SAAR, I. AND SVANTESSON, S. (2024). ‘Merging the genus *Tomentella* with *Thelephora*’. *Folia Cryptogamica Estonica*, 61: 67–86. DOI: [10.12697/fce.2024.61.09](https://doi.org/10.12697/fce.2024.61.09)
- [2] PATOULLARD, N.T. (1894). ‘Quelques espèces nouvelles de champignons du Nord de l’Afrique’. *Journal de Botanique (Morot)*, 8: 219–221. URL: <http://www.biodiversitylibrary.org/item/18810#page/229/>
- [3] SACCARDO, P.A. (1895). ‘Supplementum universale, Pars III’. *Sylloge Fungorum*, 11: 1–753. URL: <http://www.biodiversitylibrary.org/item/25345#page/7/>
- [4] SACCARDO, P.A. AND SYDOW, P. (1899). ‘Supplementum universale, pars IV’. *Sylloge Fungorum*, 14: 1316 p. URL: <http://www.biodiversitylibrary.org/item/102143#page/7/>



Fig. 1: Basidiome; ex isotype of *Tomentella lateritia* Pat. [PC: herb. gén.]

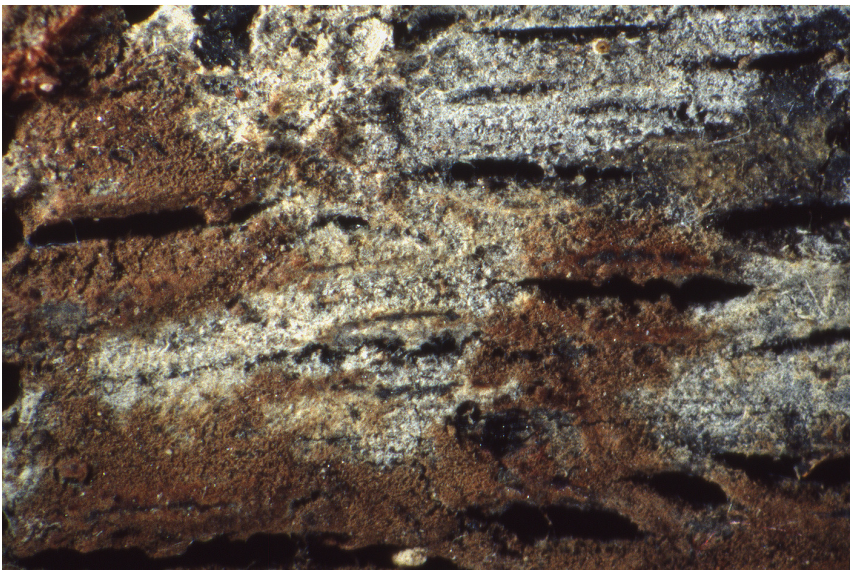


Fig. 2: Basidiomes of *Tomentella lateritia* Pat. and *Hypochnus longisporus* Pat.; ex holotype of both species. Image width = 10 mm [FH: Patouillard herb., sheet 3608]



Fig. 3: Basidiome; ex holotype of *Tomentella lateritia* Pat. Image width = 10 mm  
[FH: Patouillard herb., sheet 3608]



Fig. 4: Basidiome; ex holotype of *Tomentella lateritia* Pat. Image width = 10 mm  
[FH: Patouillard herb., sheet 3608]

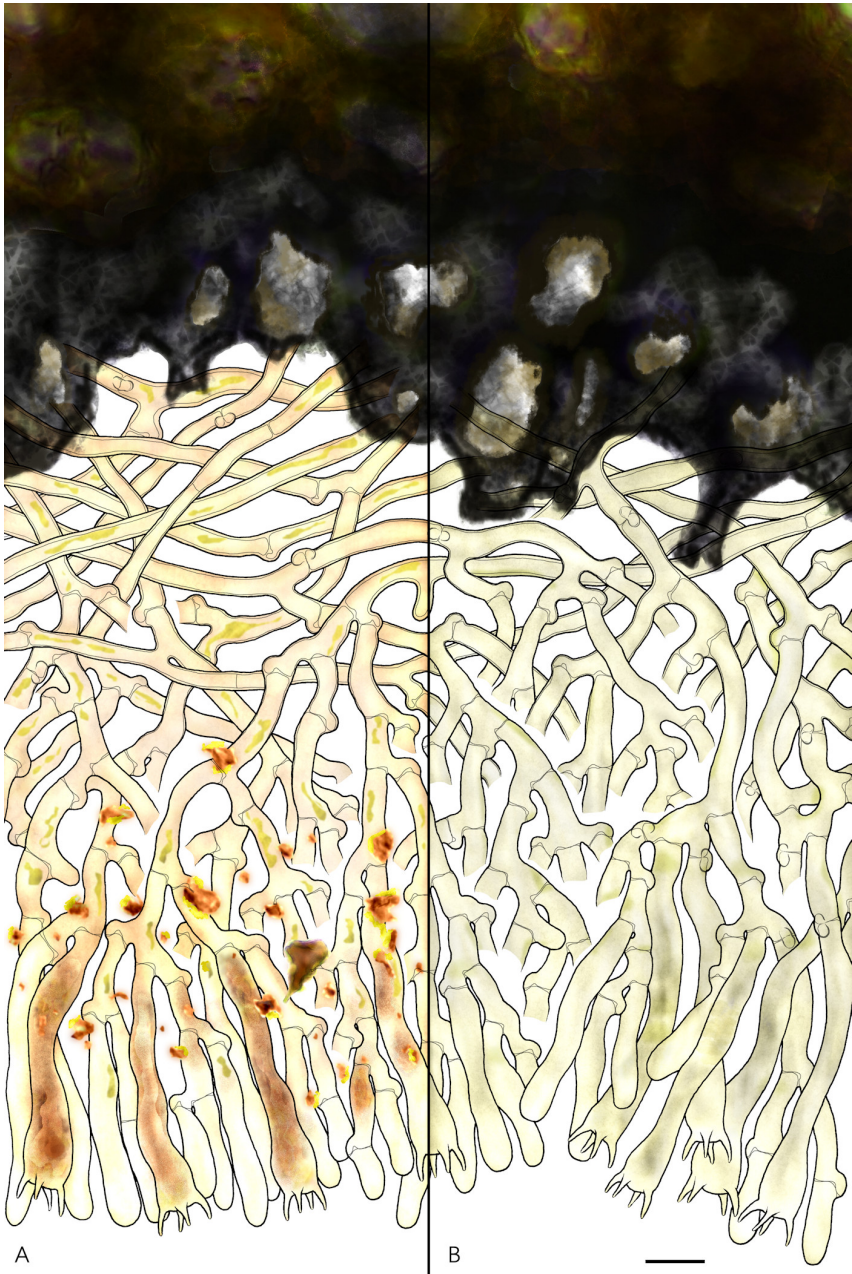


Fig. 5: Simplified vertical section through the basidiome and the charred substrate : **A**) in water; **B**) in KOH; ex isotype of *Tomentella lateritia* Pat. Bar = 10  $\mu\text{m}$  [PC: herb. gén.]

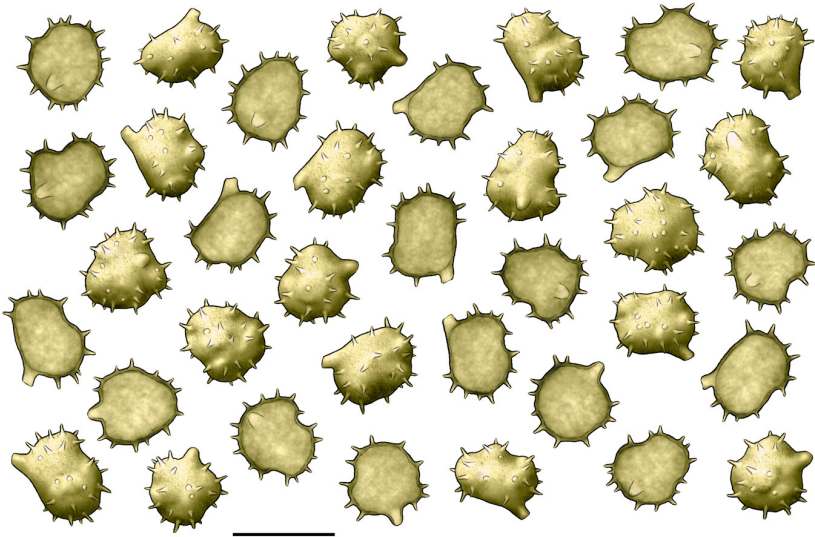


Fig. 6: Basidiospores; ex isotype of *Tomentella lateritia* Pat. Bar = 10  $\mu$ m [PC: herb. gén.]



# Excerpts from *Crusts & Tells*

Descriptions and reports of resupinate Aphyllophorales and Heterobasidiomycetes

Authored and published by

ELIA MARTINI  
Via ai Ciòss 21  
CH-6676 Bignasco  
Switzerland

Email: [emart@aphyllo.net](mailto:emart@aphyllo.net)  
<https://www.aphyllo.net>  
Orcid: 0000-0002-4709-2964



Issue № 197:

*Thelephora eulateritia* Kõljalg, I. Saar & Svantesson

Released on: 1<sup>st</sup> January, 2026

© E. Martini

This work is licensed under a [Creative Commons Attribution 4.0 International License \(CC BY 4.0\)](https://creativecommons.org/licenses/by/4.0/)

