

## № 179

*Tomentella purpurea*

Wakef.

Figures 1–4

*Tomentella purpurea* Wakef. 1966 [2 : 361]

**Basidiome** effused, adherent, tomentose, rather soft to compact, up to 0.5 (1) mm thick, without spicules and nodulose parts.

**Hymenophore** smooth, continuous, when fresh purple [orig. descr.], when dry very pale brown to pale brown (10YR 7/3–6/3) becoming slightly darker when more spores are present on the surface, not fissured.

**Subhymenium** thickening to strongly thickening, 1-layered, darker than the surface.

**Subiculum** poorly or well developed, hypochnoid to tomentose, brown to dark brown, in parts very dark greyish brown (10YR 4/3–3/2 (3/1)), distinctly darker than the fertile area.

**Margin** indeterminable, indefinitely thinning out, concolour to paler than the fertile area.

**Rhizomorphs** present in subiculum and substrate, up to 0.2 mm thick, relatively loose, not compact, dark brown.

**Hyphal system** monomitic; hyphae mostly fibulate but with presence of scattered simple and adventitious septa (often shortly spaced) in subicular and rhizomorphal hyphae.

**Subicular hyphae** mostly running parallelly to the substrate, loosely arranged, regular or almost so, sinuous, (2.5) 3–5.2 µm diam, normally branching at some distance from septa, with some elbow-like bends or localized thickenings, light ochre to brownish, walls 0.4–0.9 µm thick, brown.

**Context hyphae** loosely arranged, obliquely to vertically oriented, mostly regular, 3.3–6 (6.7) µm diam, sometimes widened and triangular at branchings and then 7–15 µm wide, subhyaline to ochre brown; walls (0.3) 0.5–0.9 µm thick, ochre to brown.

**Subhymenial hyphae** regular to slightly irregular, sometimes becoming faintly torose in short series of isodiametric cells, (3.3) 3.8–6.5 µm diam,

sometimes becoming triangular at branchings and then 10–13  $\mu\text{m}$  wide  $\mu\text{m}$  diam, hyaline to pale yellowish brown.

**Rhizomorphs** not structured, individual hyphae like subicular ones, regular or almost so, (2.5) 3–5 (6)  $\mu\text{m}$ , subhyaline to ochraceous or brownish; walls 0.4–0.9(–1.1)  $\mu\text{m}$  thick.

**Cystidia** absent.

**Basidioles** globose, ellipsoid, clavate, cylindrical, obpyriform, 4.5–9.5 (10.5)  $\mu\text{m}$  diam.

**Basidia** few mature seen, clavate to slightly utriform, 35–50  $\mu\text{m}$  long, 8–10 (11)  $\mu\text{m}$  wide at top, 7–9  $\mu\text{m}$  at the lower middle, hyaline to pale yellowish brown, sometimes with uniform light ochre brown content. Sterigmata 5–6 (7)  $\mu\text{m}$  long and 1.5–2.5  $\mu\text{m}$  wide at the base.

**Basidiospores** irregular to lobed or multilobed, echinulate, crowns present but rarely distinct, without guttulae [but reported 'with often an oil-drop' in the orig. descr.], pale to light ochre brown, slightly paler to concolour with elements in mass, walls 0.4–0.7  $\mu\text{m}$  thick; 7.2–[8.05]–8.8 (9.2)  $\mu\text{m}$  long; **lateral face** irregularly ellipsoid, often 2-3-lobed dorsally, flattening, rarely slightly depressed, 5.2–[5.69]–6.2 (6.4)  $\mu\text{m}$  diam,  $Q = (1.16) 1.34$ –[1.43]–1.52(–1.54); **frontal face** irregularly ellipsoid to 3-multi-lobed, often distinctly elongated, (6.0) 6.2–[6.73]–7.2 (7.6)  $\mu\text{m}$  diam,  $Q = (1.06) 1.11$ –[1.19]–1.26 (1.29); in **polar** view: irregularly globose to slightly lobed.

**Aculei** 0.4–0.7 (0.9)  $\mu\text{m}$  long, 0.4–0.8  $\mu\text{m}$  wide at base, mostly blunt, single or rarely paired at the base, unevenly distributed, sometimes divergent over a small wart.

**Apiculus** lateral near the base in side view, 1.2–1.6  $\mu\text{m}$  across, inamyl-oid; hilum indistinct.

**Macrospores** rare, about 10.5 $\times$ 8  $\mu\text{m}$ , not differentiated.

**Chlamydospores** absent.

**Incrustation:** none evident.

**Chemical reactions:** IKI —. CB not tested. KOH —

## Specimen examined

SOUTH AFRICA – Bethal, Wassermann's Farm, on wood & soil at base of *Eicalyptus* stump, leg. P.H.B. Talbot 36945, 19.II.1949, holotype of *Tomentella purpurea* Wakef. (K(M) 69199)

## Materials and methods

Specimens sampling and methodological details are described separately in this issue:

Excerpts from *Crusts & Fells*, n° 0



Fig. 1: Basidiome; ex holotype of *Tomentella purpurea* Wakef. Image width = 14 mm [K(M) 69199]



Fig. 2: Basidiome; ex holotype of *Tomentella purpurea* Wakef. Image width = 14 mm [K(M) 69199]





Fig. 3: Simplified vertical section through the basidiome; ex holotype of *Tomentella purpurea* Wakef. Bar = 10  $\mu$ m [K(M) 69199]

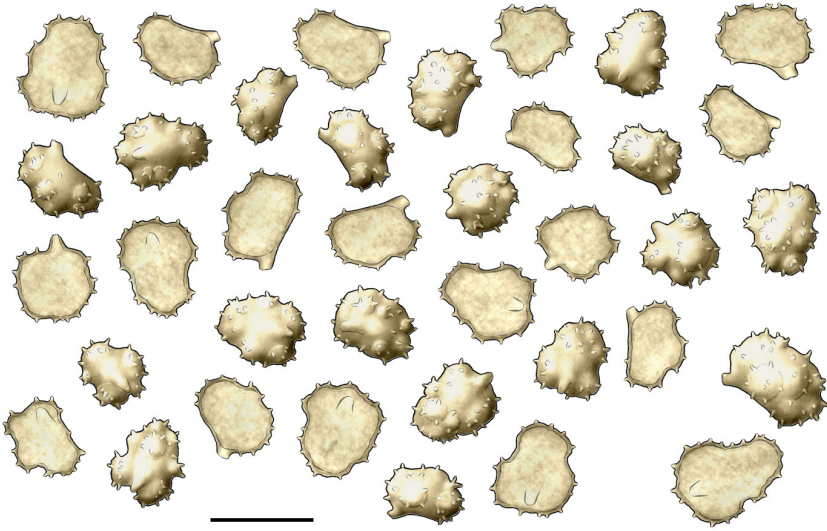


Fig. 4: Basidiospores. Two macrospores in the lower right corner; ex holotype of *Tomentella purpurea* Wakef. Bar = 10  $\mu$ m [K(M) 69199]

## References

- [1] LARSEN, M.J. (1974). 'A contribution to the taxonomy of the genus *Tomentella*'. *Mycologia Memoirs*, 4: 1–145
- [2] WAKEFIELD, E.M. (1966). 'Some extra-european species of *Tomentella*'. *Transactions of the British Mycological Society*, 49 (3): 357–362. DOI: [10.1016/S0007-1536\(66\)80077-3](https://doi.org/10.1016/S0007-1536(66)80077-3)



# Excerpts from *Crusts & Tells*

Descriptions and reports of resupinate Aphyllophorales and Heterobasidiomycetes

Authored and published by

ELIA MARTINI  
Via ai Ciòss 21  
CH-6676 Bignasco  
Switzerland

Email: [emart@aphyllo.net](mailto:emart@aphyllo.net)  
<https://www.aphyllo.net>  
Orcid: 0000-0002-4709-2964



Issue № 179:

*Tomentella purpurea* Wakef.

Released on: 1<sup>st</sup> June, 2024

© E. Martini

This work is licensed under a [Creative Commons Attribution 4.0 International License](https://creativecommons.org/licenses/by/4.0/) (CC BY 4.0)

