

Tomentella subcorticioides

S.S. Rattan

Figures 1–8

Tomentella subcorticioides S.S. Rattan 1977 [1 : 53] K!

Basidiome effused, with confluent mounds to continuous, without nodulose parts, abortive pileoli or spicules, adherent, partially separable or even detached from the substrate, up to 0.3 (0.8) mm thick.

Hymenophore continuous, smooth, rather polished, submembranaceous, compact, becoming crustaceous, cracking when dry and exposing context and subiculum, uniformly brown (10YR 5/3), older small parts becoming dark brown (7.5YR 3/2).

Subhymenium slightly thickening, 1-layered, in very old parts rather blackish.

Context looser than subhymenium and subiculum, up to 0.3 mm thick, brownish, build up by hyphae running in all directions.

Subiculum almost lacking (and context acting as subiculum) or well developed, membranaceous, up to 0.3 mm thick, yellowish brown, built up by compactly arranged hyphae running along the substrate, sometimes forming strands toward the margin.

Margin fertile throughout, abrupt or indefinitely thinning out, relatively thick, pubescent to fibrillose, in a part fan-shaped and fimbriate, paler to concolour with the fertile area, pale yellowish brown, pale brown to brown (10YR 7–5/3–4).

Rhizomorphs absent.

Hyphal system monomitic; hyphae mostly with fibulate primary septa; simple septa scattered in subicular hyphae, relatively frequent.

Subicular hyphae regular, of different width, (2.5) 3.5–6.0 (6.5) μm diam, subhyaline to pale ochre-brown, with thin or thickening walls 0.3–0.6 (0.7) μm thick, often with simple anastomosis, subhyaline to pale yellowish brown.

Context hyphae regular, (2.5) 3.0–5.2 (5.8) μm diam, subhyaline to

pale yellowish brown, rarely with simple anastomosis.

Subhymenial hyphae regular, (2.4) 3.3–6.0 (7.0) μm diam, in deep subhymenium mostly collapsed and indistinct, thin-walled, often branching from clamps, subhyaline to pale yellowish brown.

Cystidia absent.

Basidioles at first hyphoid then ellipsoid, clavate, cylindrical, obpyriform, (4.0) 4.2–10 (11.5) μm diam, hyaline or subhyaline.

Basidia clavate to subcylindrical with some constrictions, (45) 46–70 (80) μm long, (7.8) 8.4–10.5 (11.6) μm diam at top, (4.3) 4.8–8.5 (8.9) μm wide at the lower middle, subhyaline, often with ochre-brownish content; 4 sterigmata 5.0–7.5 (8.0) μm long and 1.7–2.7 (3.0) μm wide at the base.

Basidiospores irregular to lobed, rarely becoming multilobed, echinulate, some crowns present, without guttulae, with thickening wall up to 0.5 μm , ochraceous; (7.0) 7.2–[7.79]–8.4 (8.6) μm long; **lateral face** irregularly ellipsoid or obliquely obpyriform, often slightly 3-lobed dorsally, adaxial side flattening or rarely slightly slightly depressed, (5.0) 5.4–[5.91]–6.2 (6.6) μm diam, $Q = (1.16) 1.24$ –[1.32]–1.39 (1.44); **frontal face** irregularly ovoid to 3-lobed, 6.2–[6.81]–7.6 (7.8) μm diam, $Q = (1.05) 1.06$ –[1.15]–1.21 (1.25); in **polar** view irregularly globose to slightly 3-lobed.

Aculei 0.5–1.0 (1.2) μm long, (0.3) 0.4–0.7 μm wide at base, terete, tapering, single or sometimes paired at the base, unevenly distributed.

Apiculus lateral near the base in side view, 1.0–1.5 μm across, inamyloid; hilum indistinct.

Macrospores rare, about 10×6.5 –8.0 μm , not differentiated.

Chlamydospores absent.

Incrustation: none evident.

Chemical reactions: IKI —. CB not tested. KOH —

Specimen examined

INDIA — **Uttar Pradesh** – Mussoorie, Dhanaulti, on *Cedrus sp.*, leg. S.S. Rattan 5847, 7.IX.1973 (K(M) 69205)

Materials and methods

Specimens sampling and methodological details are described separately in this issue:
Excerpts from *Crusts & Fells*, n° 0

References

- [1] RATTAN, S.S. (1977). 'The resupinate Aphylophorales of the north western Himalayas'. *Bibliotheca Mycologica*, 60: 1–427

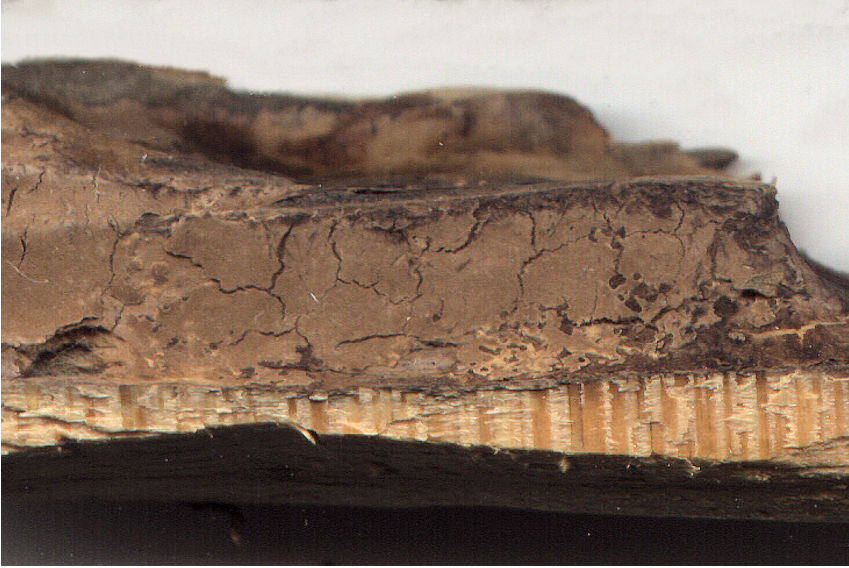


Fig. 1: Basidiome; ex holotype of *Tomentella corticioides* S.S.Rattan [K(M) 69205]



Fig. 2: Detail of the hymenophore; ex holotype of *Tomentella corticioides* S.S.Rattan. Image width = 14 mm [K(M) 69205]



Fig. 3: Basidiome; ex holotype of *Tomentella corticioides* S.S.Rattan. Image width = 12 mm [K(M) 69205]



Fig. 4: Fibrillose part of the margin; ex holotype of *Tomentella corticioides* S.S.Rattan. Image width = 10 mm [K(M) 69205]



Fig. 5: Subicular hyphae; ex holotype of *Tomentella corticioides* S.S.Rattan. Bar = 10 μ m [K(M) 69205]

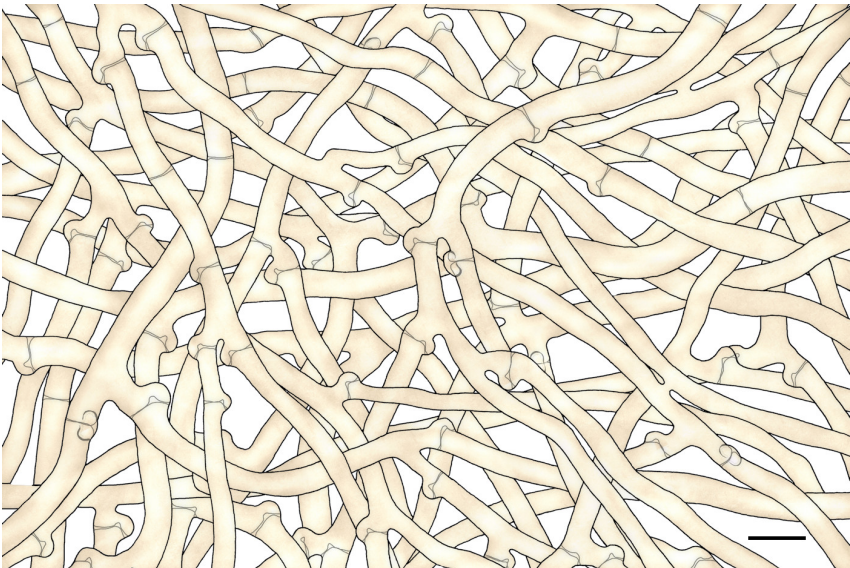


Fig. 6: Context hyphae; ex holotype of *Tomentella corticioides* S.S.Rattan. Bar = 10 μ m [K(M) 69205]



Fig. 7: Basidiales, basidia, subhymenial hyphae; ex holotype of *Tomentella corticioides* S.S.Rattan. Bar = 10 μ m [K(M) 69205]

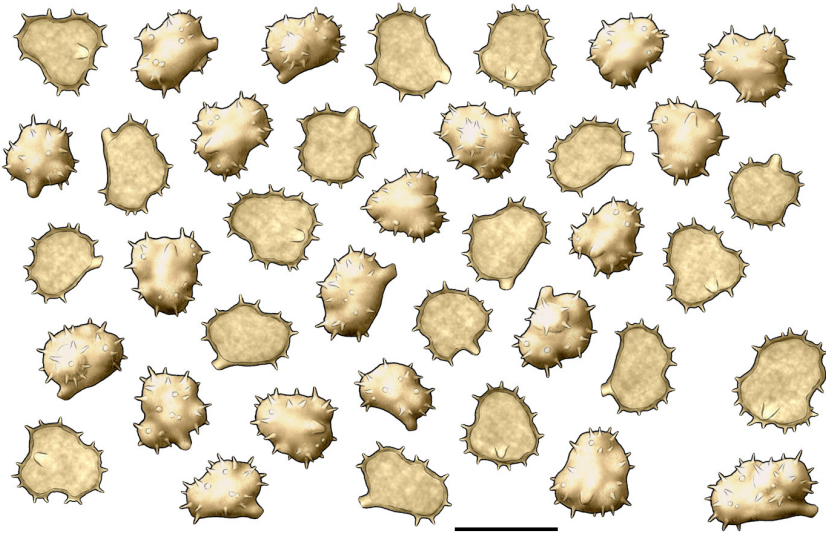


Fig. 8: Basidiospores; two macrospores in the lower right corner. Ex holotype of *Tomentella corticioides* S.S.Rattan. Bar = 10 μ m [K(M) 69205]



Excerpts from *Crusts & Tells*

Descriptions and reports of resupinate Aphyllophorales and Heterobasidiomycetes

Authored and published by

ELIA MARTINI
Via ai Ciòss 21
CH-6676 Bignasco
Switzerland

Email: emart@aphyllo.net
<https://www.aphyllo.net>
Orcid: 0000-0002-4709-2964



Issue № 178:

Tomentella subcorticioides S.S. Rattan

Released on: 1st May, 2024

© E. Martini

This work is licensed under a [Creative Commons Attribution 4.0 International License](https://creativecommons.org/licenses/by/4.0/) (CC BY 4.0)

