

№ 176

Tomentella porphyrea

Petch

Figures 1–7

Tomentella porphyrea Petch 1924 [2 : 297]

Basidiome effused, continuous, adherent, incrusting wood and bark over a surface of about 10×2 cm, up to 0.5 mm thick, without spicules.

Hymenophore continuous, smooth, tomentose to compact, faintly crustose, light yellowish brown to ochraceous (2.5Y–10YR 6–5/4), brown with a light reddish hue in older parts (7.5YR 5/4).

Subhymenium strongly thickening, 1-layered, compact, up to 0.1–0.3 mm thick, dark brown (7.5–10YR 3/3), distinctly darker than surface and subiculum.

Subiculum distinct, tomentose, up to 0.2 mm thick, light yellowish brown to very pale brown (10YR 6–7/4).

Margin almost fertile throughout, abrupt or shortly thinning out, pruinose to finely tomentose, very pale brown or very pale yellowish brown (10YR 8–7/4), white in the living state [orig. descr.].

Rhizomorphs absent.

Hyphal system monomitic; all hyphae with fibulate primary septa, scattered simple or adventitious septa may be present in basal hyphae.

Subicular hyphae few parallelly arranged to the substrate, straight or almost so, 4–6.5 (7) µm diam, walls 0.6–1 (1.2) µm, soon arranged in all directions and relatively short-celled, frequently branched, 4–7 (8) µm, rarely becoming slightly triangular at branchings near the subhymenium, 8–13 µm wide, walls 0.4–0.7 µm thick, subhyaline to pale yellowish brown.

Subhymenial hyphae regular to irregular, infrequently botryose, fibulate, (3.5) 4–7 (10) µm diam, thin-walled, hyaline to pale yellowish brown.

Cystidia absent.

Basidioles clavate, cylindrical, obpyriform, (3.8) 4.5–8.7 (11) µm diam.

Basidia clavate, sinuous, subcylindrical, utriform, 34–55 (62) µm long, 8–10.5 µm wide at top, 6.5–9.5 µm wide at the lower middle, hyaline to



Fig. 1: Basidiome; ex holotype of *Tomentella porphyrea* Petch. Bar = 10 cm [K(M)69208]

subhyaline, sometimes with brownish content, often collapsed; 4 sterigmata 5–7 (9) μm long and 1.5–2.5 (3) μm wide at the base.

Basidiospores with regular outline, echinulate, without guttulae, with thickening wall (up to 0.5 μm), ochraceous to brownish; (8) 8.4–10.5 μm long; **lateral face** ellipsoid, adaxial side flattening, 6.0–[7.0]–8.0 μm diam, $Q = (1.11) 1.16$ –[1.29]–1.38 (1.44); **frontal face** ellipsoid, distinctly elongate, (7.0) 7.2–[8.05]–8.6 (8.8) μm wide, $Q = (1.05) 1.10$ –[1.19]–1.26 (1.33); in **polar** view globose or subglobose.

Aculei up to 1.5 (1.7) μm long and 0.4–0.8 μm wide at the base, terete or curved, tapering, single, mostly evenly distributed.

Apiculus toward the base of the spore, distinct, 1–1.6 μm across, inamyloid; hilum often distinct.

Macrospores rare, not differentiated, 11.5–12 μm long.

Chlamydospores absent.

Incrustation: none evident.

Chemical reactions: IKI—, CB: not tested. KOH—

Voucher specimens

SRI LANKA – Hakgala, on wood and bark, leg. n. 5521, XII.1917, holotype of *Tomentella porphyrea* Petch (K(M)69208)



Fig. 2: ; ex holotype of *Tomentella porphyrea* Petch. Bar = 2 mm [K(M)69208]



Fig. 3: Basidiome; ex holotype of *Tomentella porphyrea* Petch. Bar = 2 mm [K(M)69208]

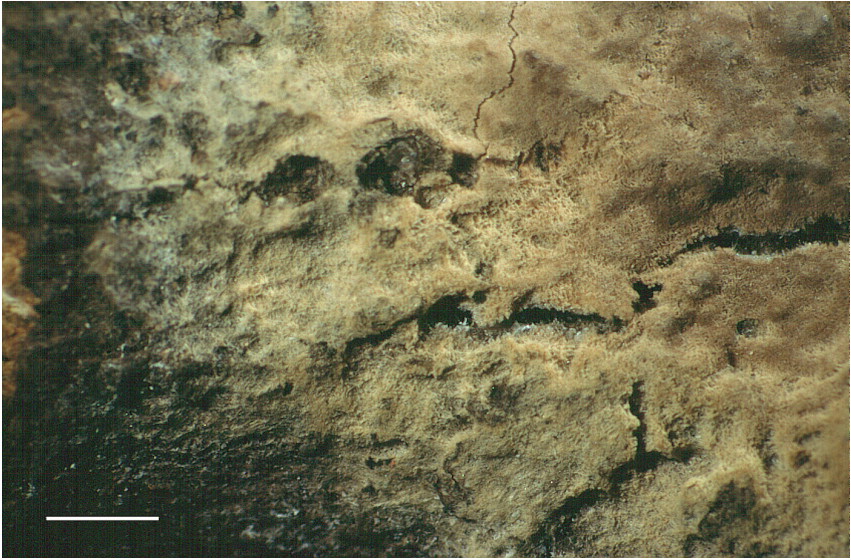


Fig. 4: Basidiome toward the margin; ex holotype of *Tomentella porphyrea* Petch.
Bar = 2 mm [K(M)69208]

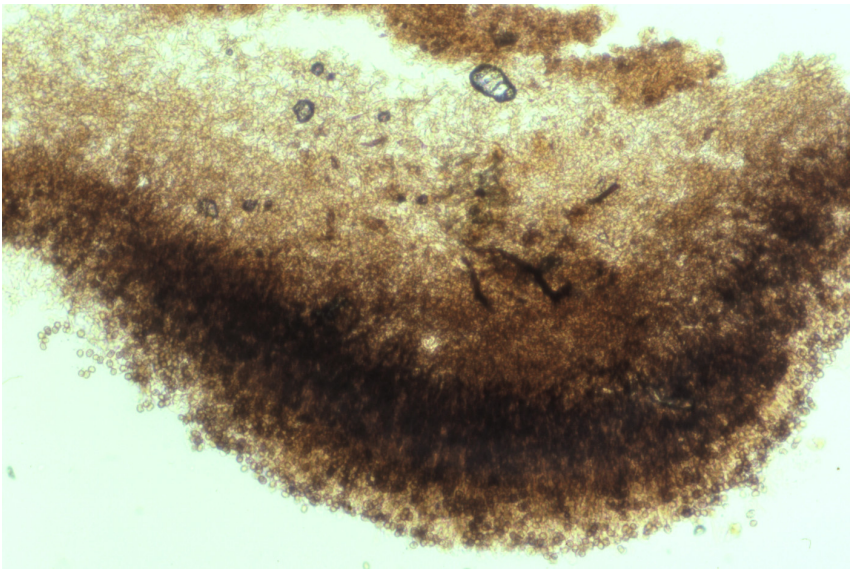


Fig. 5: Vertical section through the basidiome; ex holotype of *Tomentella porphyrea* Petch [K(M)69208]

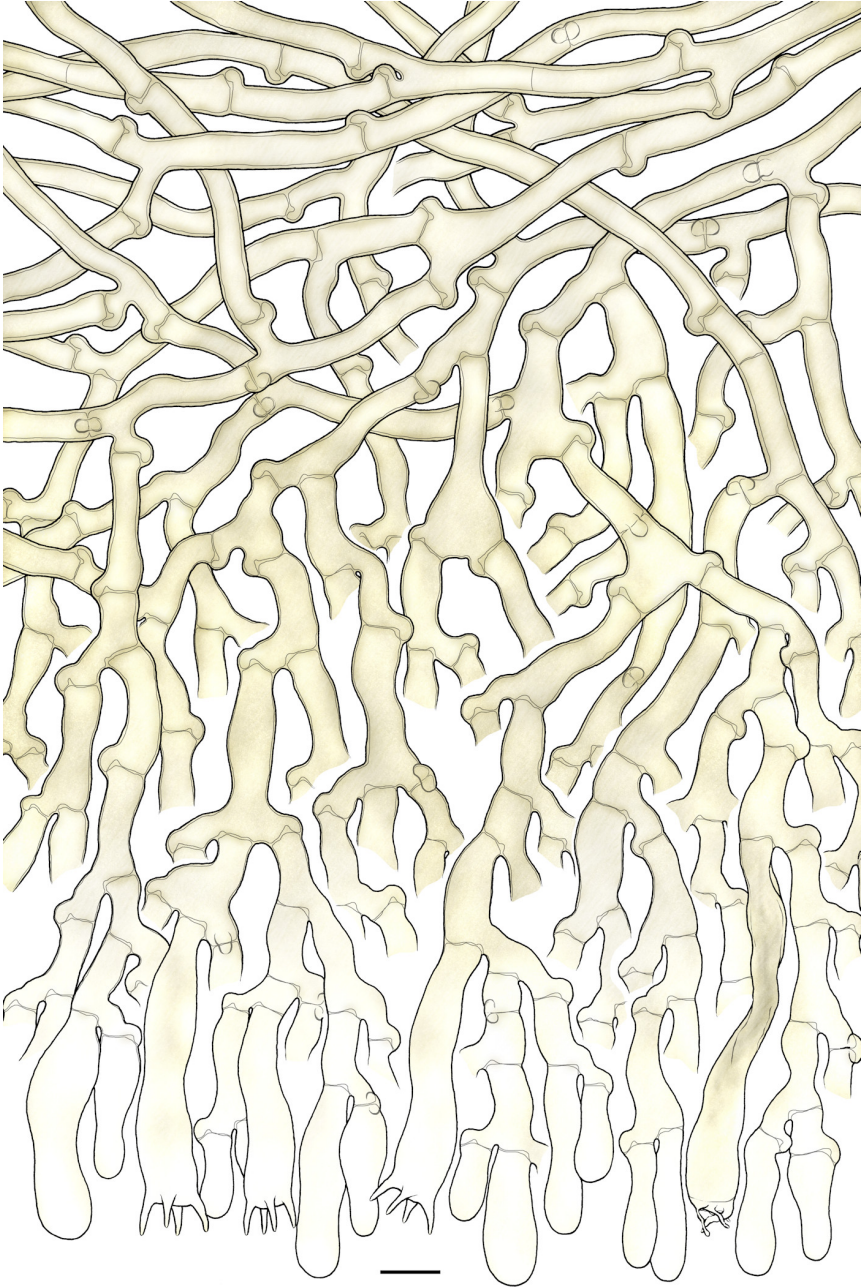


Fig. 6: Simplified vertical section through the basidiome; ex holotype of *Tomentella porphyrea* Petch. Bar = 10 μm [K(M)69208]

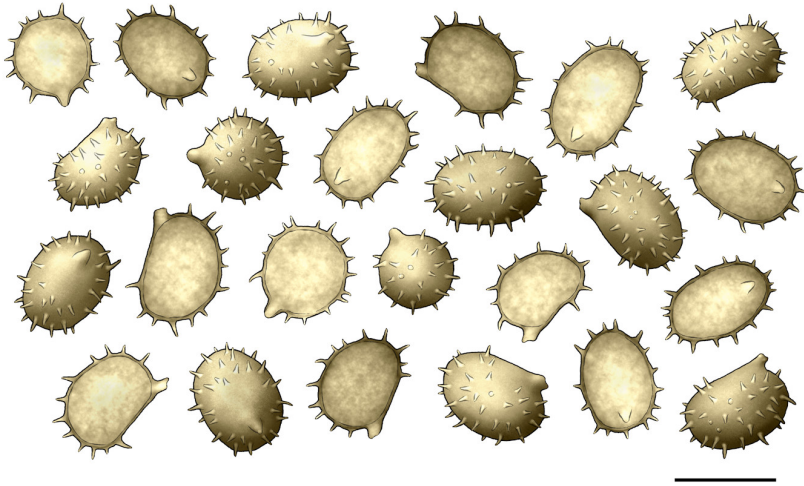


Fig. 7: Basidiospores; ex holotype of *Tomentella porphyrea* Petch. Bar = 10 μ m [K(M)69208]

Materials and methods

Specimens sampling and methodological details are described separately in this issue:
Excerpts from *Crusts & Jells*, n° 0

References

- [1] LARSEN, M.J. (1974). 'A contribution to the taxonomy of the genus *Tomentella*'. *Mycologia Memoirs*, 4: 1–145
- [2] PETCH, T. (1924). 'Notes on Ceylon *Thelephoraceae*, etc'. *Annals of the Royal Botanic Gardens of Peradeniya*, 9 (3): 259–298



Excerpts from *Crusts & Tells*

Descriptions and reports of resupinate Aphyllophorales and Heterobasidiomycetes

Authored and published by

ELIA MARTINI
Via ai Ciòss 21
CH-6676 Bignasco
Switzerland

Email: emart@aphyllo.net
<https://www.aphyllo.net>
Orcid: 0000-0002-4709-2964



Issue № 176:

Tomentella porphyrea Petch

Released on: 1st March, 2024

© E. Martini

This work is licensed under a [Creative Commons Attribution 4.0 International License](https://creativecommons.org/licenses/by/4.0/) (CC BY 4.0)

