

№ 175

Tomentella corticioides

Wakef.

Figures 1–4

Tomentella corticioides Wakef. 1960 [1 : 921] NY!

Basidiome effused, adherent, incrusting, thick tomentose to crustose, up to 1.5 mm thick, finally developing and consolidating the underlying soil (sand and vegetal remains) and becoming very thick, up to 5 mm or more.

Hymenial surface smooth, continuous, not or infrequently cracked, pale yellow to light yellowish brown (2.5Y 7–6/4).

Subhymenium thickening, up to 0.1 mm, and partly somewhat separable from the subiculum.

Subiculum becoming very thick, tomentose, dark reddish brown (5YR 3/4), distinctly darker than the fertile area.

Margin sterile or almost so, shortly thinning out, tomentose, darker than the fertile area and concolour with the subiculum.

Rhizomorphs or strands present in subiculum.

Hyphal system monomitic; all hyphae with mostly fibulate primary septa and scattered simple and adventitious septa.

Subicular hyphae regular, 4–6 (8) μm wide, normally branching at some distance from septa, with thickening wall up to 0.8 (1) μm , yellowish brown to brownish.

Subhymenial hyphae regular to slightly irregular, (4) 5–8 (10) μm wide, sometimes slightly broadening at the ramifications or with short and slightly swollen cells, often branching from clamps, thin-walled or with slightly thickening wall, hyaline to subhyaline.

Rhizomorphs not differentiated, present in subiculum as relatively loose strands of hyphae same as subicular ones.

Cystidia absent.

Basidia few seen because the hymenium is rather young, subcylindrical to narrowly clavate or faintly utriform, often somewhat sinuous and with slight compressions, 50–70 μm long, 10–13 μm wide at top, 7–11 at the

lower middle, hyaline or subhyaline; 4 sterigmata up to 7 μm long and 1.5–2.5 μm wide at the base.

Basidiospores with regular to slightly lobed outline, echinulate, crowns absent, guttulae absent or indistinct, pale yellowish brown to yellowish brown; 8–[8.94]–10 (10.2) μm long; **lateral face** ellipsoid to slightly 2-3-lobed and a flattening or rarely depressed adaxial side, 6.2–[6.98]–7.8 (8.0) μm wide, $Q = (1.15) 1.21$ –[1.29]–1.35 (1.49); **frontal face** ellipsoid to ovoid, sometimes faintly pyriform, 6.8–[7.58]–8 (8.2) μm wide, $Q = 1.10$ –[1.18]–1.29 (1.32); in **polar view** mostly globose.

Aculei up to 1.5 (1.8) μm long and 0.4–0.6 (0.8) μm wide at the base, terete, tapering, single, unevenly distributed,

Apiculus toward the base of the spore, distinct, 1.3–1.7 μm across; hilum indistinct.

Chlamydospores absent.

Incrustation: none.

Chemical reactions: IKI—. CB— or doubtful. KOH—.

Specimen examined

USA — Texas — San Antonio, on soil, leg. Dr. Egeling, II.1890, holotype of *Tomentella corticioides* Wakef. (NY: Ellis Collection)

Materials and methods

Specimens sampling and methodological details are described separately in this issue:
Excerpts from *Crusts & Fells*, n° 0

References

- [1] WAKEFIELD, E.M. (1960). ‘Some species of *Tomentella* from North America’. *Mycologia*, 52 (6): 919–933. DOI: [10.2307/3755852](https://doi.org/10.2307/3755852)



Fig. 1: Basidiome; ex holotype of *Tomentella corticioides* Wakef. Image width = 9 mm [NY: Ellis Collection]

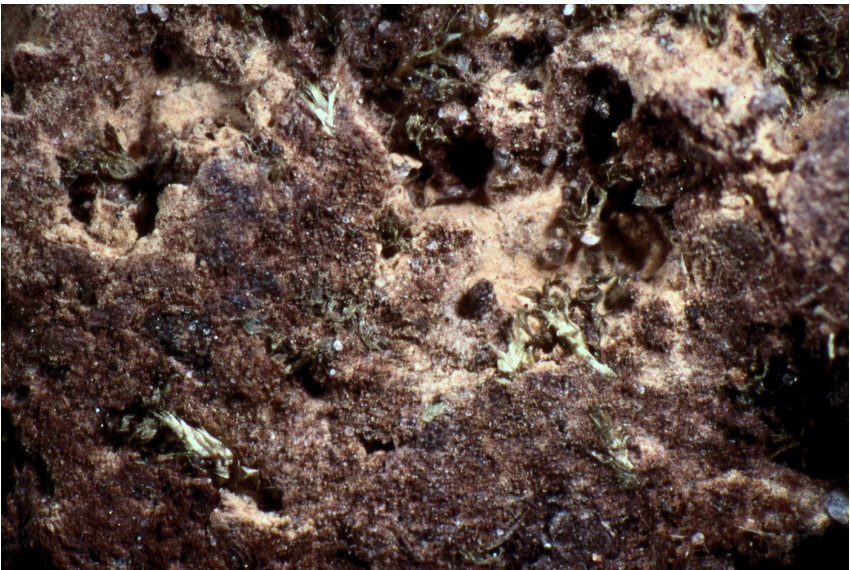


Fig. 2: Basidiome; ex holotype of *Tomentella corticioides* Wakef. Image width = 9 mm [NY: Ellis Collection]

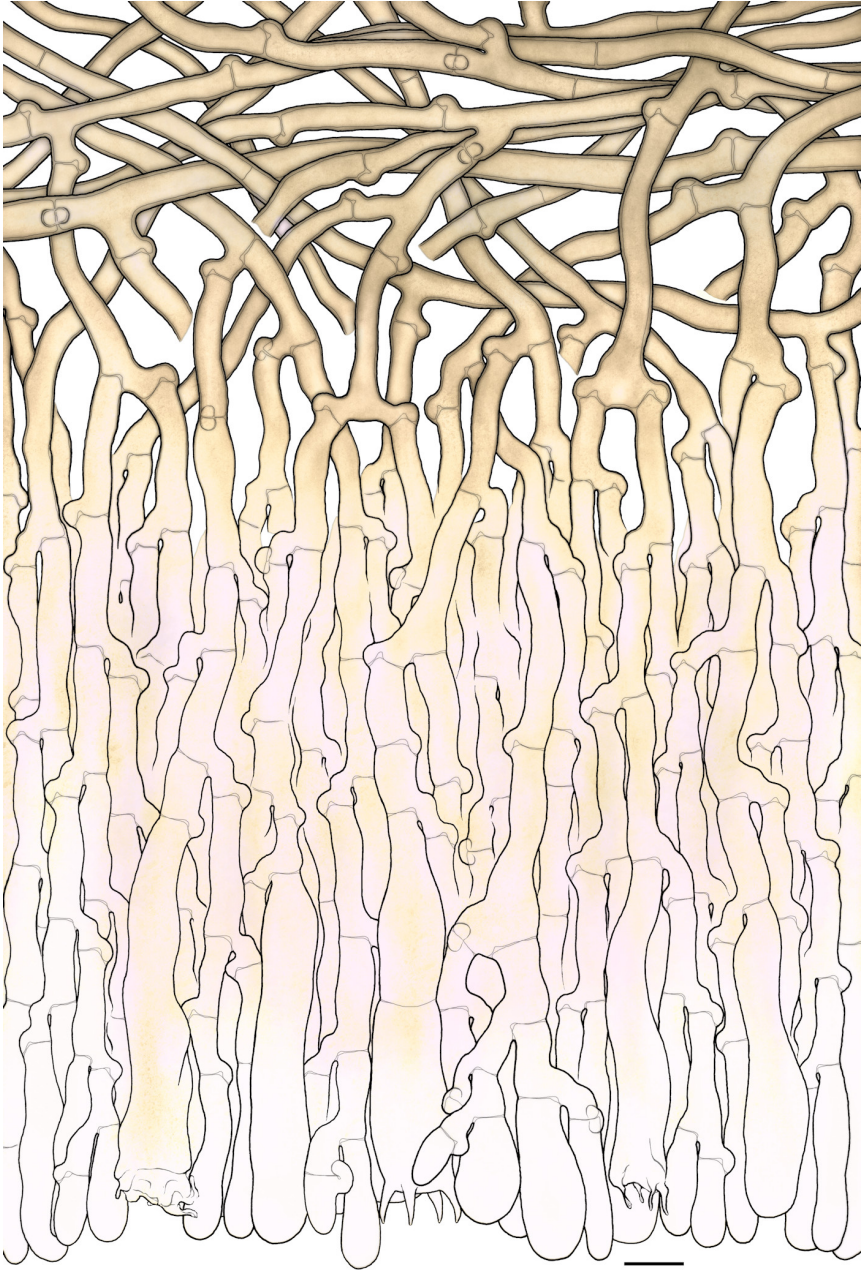


Fig. 3: Simplified vertical section through the basidiome; ex holotype of *Tomentella corticioides* Wakef. Bar = 10 μm [NY: Ellis Collection]

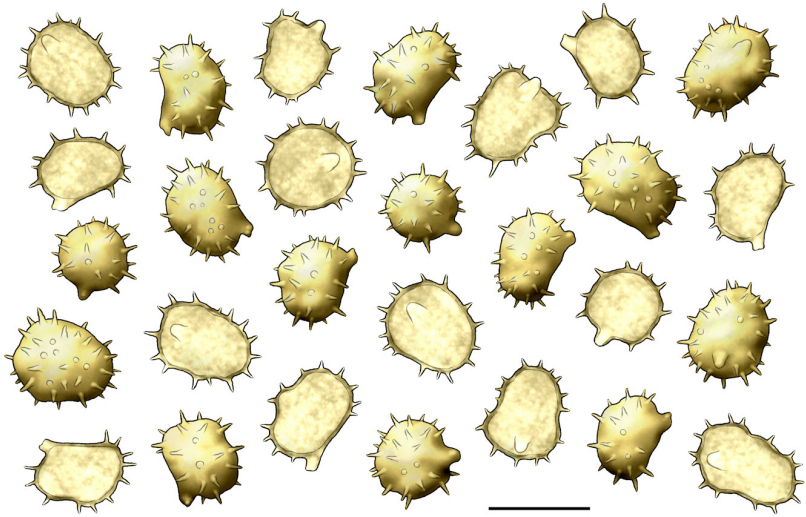


Fig. 4: Basidiospores; ex holotype of *Tomentella corticioides* Wakef. Bar = 10 μm
[NY: Ellis Collection]



Excerpts from *Crusts & Tells*

Descriptions and reports of resupinate Aphyllophorales and Heterobasidiomycetes

Authored and published by

ELIA MARTINI
Via ai Ciòss 21
CH-6676 Bignasco
Switzerland

Email: emart@aphyllo.net
<https://www.aphyllo.net>
Orcid: 0000-0002-4709-2964



Issue № 175:

Tomentella corticioides Wakef.

Released on: 1st February, 2024

© E. Martini

This work is licensed under a [Creative Commons Attribution 4.0 International License](https://creativecommons.org/licenses/by/4.0/) (CC BY 4.0)

