

Tomentella pellicularioides

Wakef.

Figures 1–6

Tomentella pellicularioides Wakef. 1966 [2 : 360] K!

Basidiome effused, adherent or loosely adherent, finely tufted to soft tomentose, up to 0.2 mm thick.

Hymenial surface porulose, mostly discontinuous, pale greyish brown to light brown (10YR 6/3–4).

Subhymenium slightly thickening, loose to relatively compact.

Subiculum poorly developed, araneous to byssoid, light brown to yellowish brown (10YR 5/4), slightly darker than the fertile area.

Margin indistinct, fertile throughout, thinning out, farinaceous or pruinose, concolour with the fertile area.

Rhizomorphs absent.

Hyphal system monomitic; all hyphae with fibulate primary septa.

Subicular hyphae loosely arranged, regular or almost so, somewhat sinuous, (1.5) 2–3.5 (4) μm wide, cells relatively short, (15) 20–40 (50) μm long, sometimes branching from clamps, often with simple anastomoses, thin-walled, infrequently with slightly thickening walls (0.3–0.6 μm), subhyaline to pale brown or light yellowish brown.

Subhymenial hyphae almost regular, (1.5) 2–4 (4.5) μm wide, infrequently slightly swollen or triangular at branchings up to 7 (8) μm across, richly branched, short-celled, thin-walled, hyaline to very pale brown.

Cystidia absent.

Basidioles narrowly clavate, cylindrical, obpyriform, (2.5) 3.5–7 (7.5) μm wide.

Basidia very few mature seen, clavate to utriform, 25–35 μm long, 6.5–7.5 μm wide top, 4–7 μm at the lower middle, secondary septa not seen, guttulate, hyaline, subhyaline, sometimes with very pale brownish content; 4 sterigmata up to 4 μm long, and 1–1.5 μm wide at the base.

Basidiospores with regular outline, aculeolate to shortly echinulate, almost thin-walled, often with a large guttula, subhyaline to pale brown, sometimes arranged in tetrads and collapsed; (7.0) 7.2–[7.72]–8.4 (8.7) μm long; **lateral face** broadly ellipsoid, adaxial side convex or slightly flattening, 6.0–[6.64]–7.2 (7.3) μm wide, $Q = (1.03) 1.06$ –[1.17]–1.24 (1.30); **frontal face** subglobose to broadly ellipsoid, 6.8–[7.24]–7.7 (8.0) μm wide, $Q = 1.03$ –[1.06]–1.09 (1.11); in **polar view** globose to transversally subglobose.

Aculei up to 0.9 (1.1) μm long and 0.3–0.6 (0.8) μm wide at base, terete, tapering, single, unevenly distributed.

Apiculus toward the base of the spore, distinct, 1.2–1.6 μm long and 1–1.5 μm wide; hilum normally distinct.

Chlamydospores absent.

Incrustation: almost all elements coarsely but distinctly incrustated in water mounts by hyaline granules dissolving in KOH.

Chemical reactions: IKI—. KOH—.

Specimen examined

TRINIDAD – L'Orange, Aripo Valley, on lying stems of a palm, leg. R.W.G. Dennis, 13.X.1949, holotype of *Tomentella pellicularioides* Wakef. (K(M) 69207)

Materials and methods

Specimens sampling and methodological details are described separately in this issue:
Excerpts from *Crusts & Jells*, n° 0

References

- [1] LARSEN, M.J. (1974). 'A contribution to the taxonomy of the genus *Tomentella*'. *Mycologia Memoirs*, 4: 1–145
- [2] WAKEFIELD, E.M. (1966). 'Some extra-european species of *Tomentella*'. *Transactions of the British Mycological Society*, 49 (3): 357–362. DOI: [10.1016/S0007-1536\(66\)80077-3](https://doi.org/10.1016/S0007-1536(66)80077-3)



Fig. 1: Basidiome; ex holotype of *Tomentella pellicularioides* Wakef. Bar = 5 mm
[K(M) 69207]



Fig. 2: Basidiome; ex holotype of *Tomentella pellicularioides* Wakef. Bar = 2 mm
[K(M) 69207]



Fig. 3: Detail of the hymenophore and margin; ex holotype of *Tomentella pellicularioides* Wakef. Bar = 2 mm [K(M) 69207]



Fig. 4: Detail of the hymenophore and margin; ex holotype of *Tomentella pellicularioides* Wakef. Bar = 2 mm [K(M) 69207]

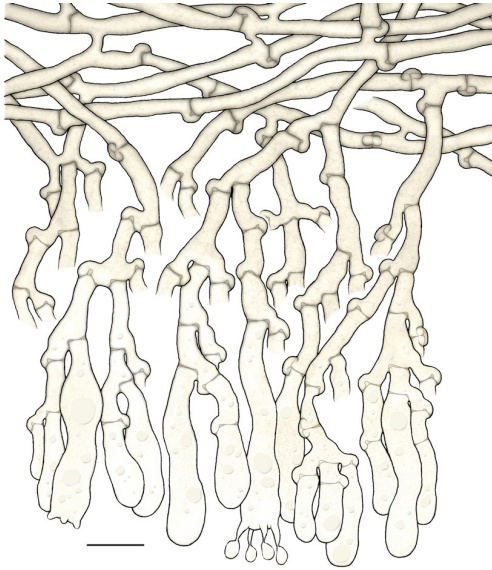


Fig. 5: Basidia, subhymenial and subicular hyphae; ex holotype of *Tomentella pellicularioides* Wakef. Bar = 10 μm [K(M) 69207]

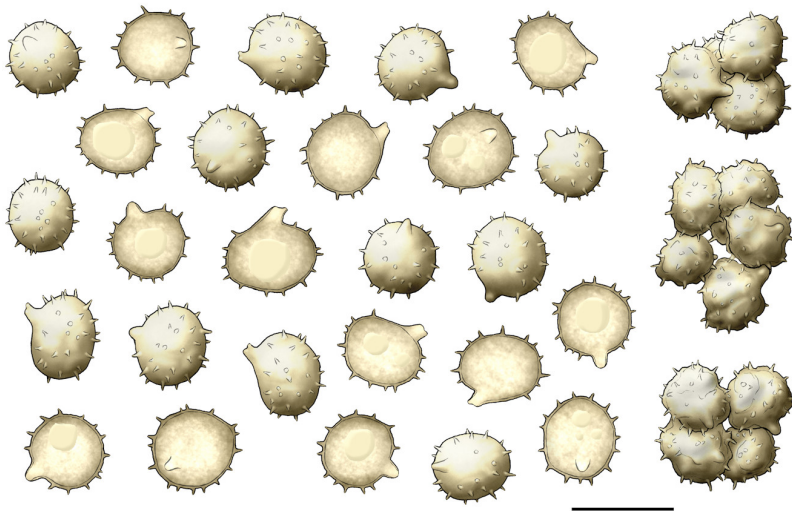


Fig. 6: Basidiospores. On the right side, collapsed spores arranged in tetrads; ex holotype of *Tomentella pellicularioides* Wakef. Bar = 10 μm [K(M) 69207]



Excerpts from *Crusts & Tells*

Descriptions and reports of resupinate Aphyllophorales and Heterobasidiomycetes

Authored and published by

ELIA MARTINI
Via ai Ciöss 21
CH-6676 Bignasco
Switzerland

Email: emart@aphyllo.net
<https://www.aphyllo.net>
Orcid: 0000-0002-4709-2964



Issue № 174:

Tomentella pellicularioides Wakef.

Released on: 1st January, 2024

© E. Martini

This work is licensed under a [Creative Commons Attribution 4.0 International License](https://creativecommons.org/licenses/by/4.0/) (CC BY 4.0)

