

Tomentella nitellina

Bourdot & Galzin

Figures 1–11

Tomentella nitellina Bourdot & Galzin 1924 [1 : 151] PC!

Basidiome effused, soft membranaceous to pellicular, loosely adherent to separable, often detached from the substrate, up to 0.5 (0.8) mm thick.

Hymenophore becoming continuous, smooth, some parts fissured on drying, relatively compact, up to 0.1 mm thick, monostratified, brown or with a light reddish tint (7.5–10YR 6–5/4 to 7.5–10YR 4/3–4), sometimes with a pale greyish bloom.

Subiculum hypochnoid to tomentose or soft-fibrous, distinct, becoming thick, yellowish-brown to pale brown-cinnamon (7.5–10YR 6–5/4–6), more or less paler than the hymenial surface.

Margin abrupt and fertile or indefinitely thinning out, byssoid to araneous and sterile, concolour with the subiculum.

Rhizomorphs absent; not differentiated thin hyphal strands may be rarely present in subiculum.

Hyphal system monomitic; all hyphae with mostly fibulate primary septa; scattered simple septa may be present in subicular hyphae.

Subicular hyphae loosely interwoven, regular or almost so, (2.5) 3–6 (7) µm diam, occasionally with swollen segments up to 10 µm, with some simple anastomoses, with thin or thickening walls (0.3–0.8) µm, subhyaline to yellowish brown (golden brown).

Subhymenial hyphae scanty, (3) 3.5–6 (8) µm, mostly regular, thin-walled, subhyaline to yellowish-brown. Remains of basidia (immature or collapsed) may infrequently appear as intercalary hyphal swelling.

Cystidia absent.

Basidioles subclavate, ovoid to ventricose, large and distinct, (8) 9–16 (19) µm wide, subhyaline to yellowish.

Basidia ventricose to utriform, 45–75 (88) µm long, 9–13 (14) µm wide at top, (10) 13–17 (20) µm at the lower middle, narrowed at the base and

frequently shortly pedunculolate, subhyaline to pale yellowish brown, often with ochraceous content; (2) 4 sterigmata up to 6–8 (10) μm long and (1.5) 2–3 μm wide at the base.

Basidiospores with irregular to slightly lobed outline, echinulate, finely verrucose; (7.2) 8–[8.85]–9.8 (10.4) μm long; **lateral face** mostly irregularly ellipsoid to broadly ellipsoid or slightly 2-3-lobed, with a flattening adaxial side, (6.4) 6.6–[7.35]–8 (8.8) μm wide, $Q = (1.05) 1.1$ –[1.21]–1.3 (1.4); **frontal face** normally \pm isodiametric, irregularly subglobose to sub-ovoid, rarely somewhat 3-4-lobed, occasionally almost star-shaped, (7) 7.4–[8.27]–9.2 (9.6) μm wide, $Q = 1$ –[1.07]–1.14 (1.26); in **polar face** globose to irregularly globose; without guttulae, walls 0.4–0.8 μm , yellowish brown or ochraceous, concolour with hymenial elements in mass.

Echinuli 0.3–0.6 (1) μm long and 0.5–0.8 (1.2) μm wide at the base, mostly blunt, obtuse, single or paired at the base or sometimes in groups of 2 to 5 over a low tubercle or wart. **Apiculus** toward the base of the spore, 1.2–2 (2.5) μm across, without a distinct hilum.

Macrospores infrequent, not differentiated, 11–12 \times 9–9.6 \times 9.8–11 μm .

Incrustation: subicular hyphae often strongly and finely incrustated by pale, small granular crystals visible in water mounts and partially dissolving in KOH.

Chemical reactions:

IKI—.

CB: spores with cyanophilous wall; hyphae doubtfully cyanophilous; basidia acyanophilous.

KOH almost none: possibly a faint loss of yellow tint.

Specimen examined

FRANCE — **Aveyron** – Boutaran, on stone, leg. A. Galzin, 14.I.1913 (PC: Bourdot 14753) – Costo-Roumive, on stone, leg. A. Galzin, XI.1919 (BPI: Bourdot 28702) – *ibid.*, on stone, leg. A. Galzin, XI.1919 (PC: Bourdot 28703) – Creissels, on stone, leg. A. Galzin, XI.1921 (PC: Bourdot 32955) – **La Lauze**, on stone, leg. A. Galzin, 1.I.1913 (PC: Bourdot 14756) – **St. Rome-de-Cernon**, on stone, leg. A. Galzin, XI.1921 (PC: Bourdot 32986) – **Trou d'Enfer**, pr. Millau, on stone, leg. A. Galzin, XI.1919 (BPI: Bourdot 28784) – *ibid.*, on stone, leg. A. Galzin, XI.1921, lectotype of *Tomentella nitellina* Bourdot & Galzin (PC: Bourdot 32921)

Materials and methods

Specimens sampling and methodological details are described separately in this issue:

Excerpts from *Crusts & Fella*, n° 0

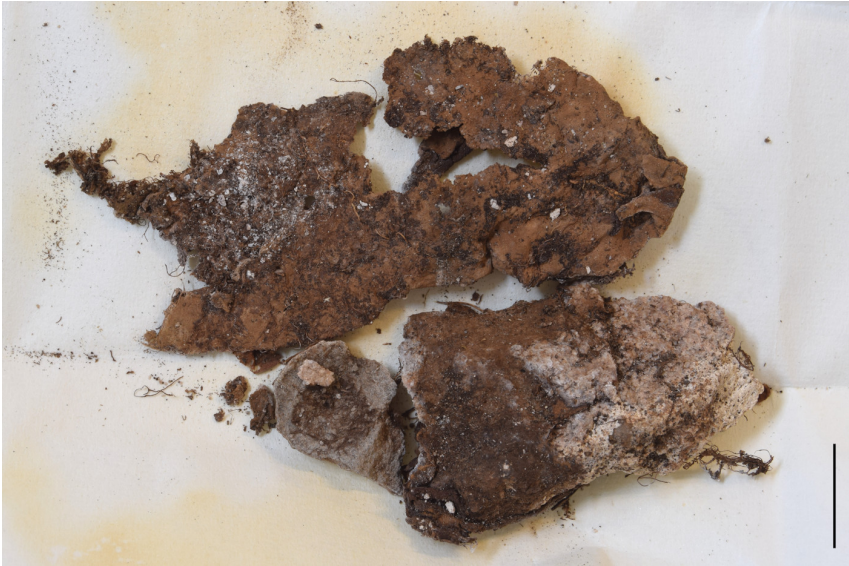


Fig. 1: Basidiome(s). Bar = 10 mm [PC: Bourdot 28703]



Fig. 2: Comparison between *Tomentella pilosa* (left side) vs. *Tomentella nitellina* (right side); both in the packet of the lectotype of *Tomentella nitellina* Bourdot & Galzin [PC: Bourdot 32921]



Fig. 3: Basidiome. Bar = 5 mm [BPI: Bourdot 28784]



Fig. 4: Basidiome turned upside-down to show the subicular side; ex lectotype of *Tomentella nitellina* Bourdot & Galzin [PC: Bourdot 32921]



Fig. 5: Basidiome (completely detached from the substrate). Bar = 5 mm [BPI: Bourdot 28702]



Fig. 6: Detail of the hymenophore and margin. Image width = 12 mm [BPI: Bourdot 28784]

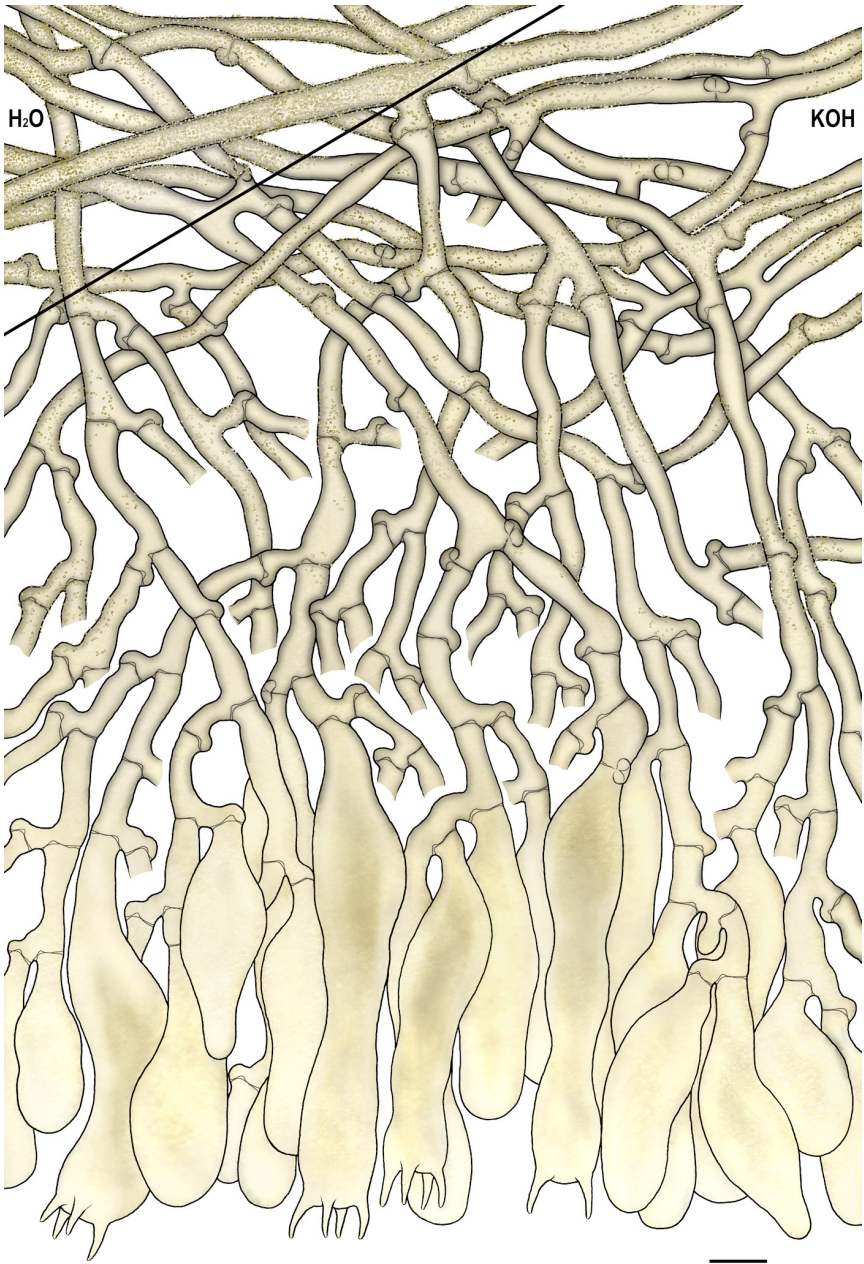


Fig. 7: Simplified vertical section through the basidiome; ex lectotype of *Tomentella nitellina* Bourdot & Galzin. Bar = 10 μ m [PC: Bourdot 32921]

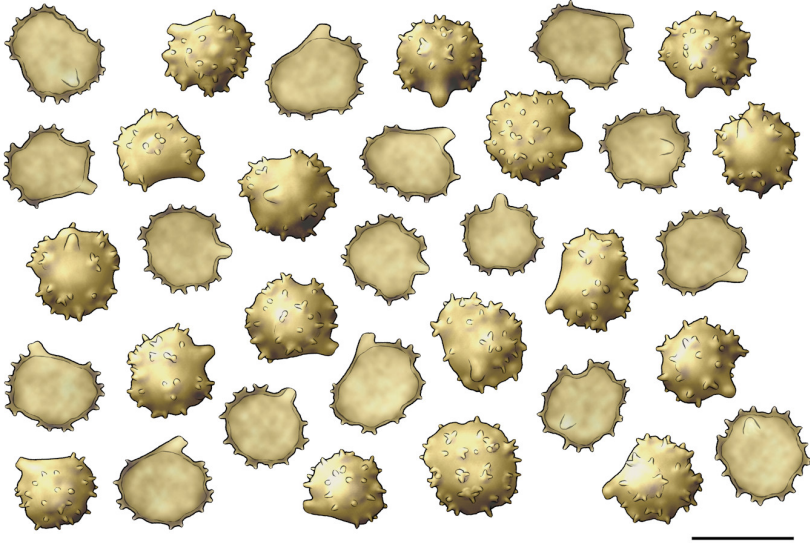


Fig. 8: Basidiospores; ex lectotype of *Tomentella nitellina* Bourdot & Galzin. Bar = 10 μ m [PC: Bourdot 32921]

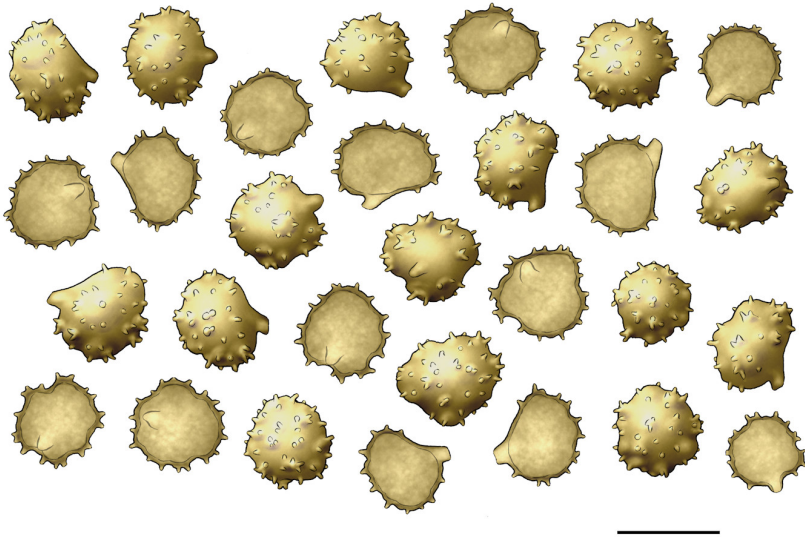


Fig. 9: Basidiospores. Bar = 10 μ m [PC: Bourdot 32986]

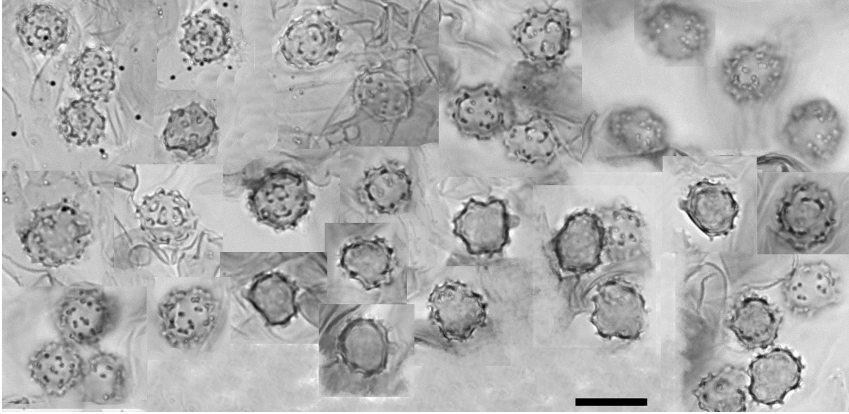


Fig. 10: Basidiospores mounted in Hoyer's medium; ex lectotype of *Tomentella nitellina* Bourdot & Galzin. Bar = 10 μ m [PC: Bourdot 32921]

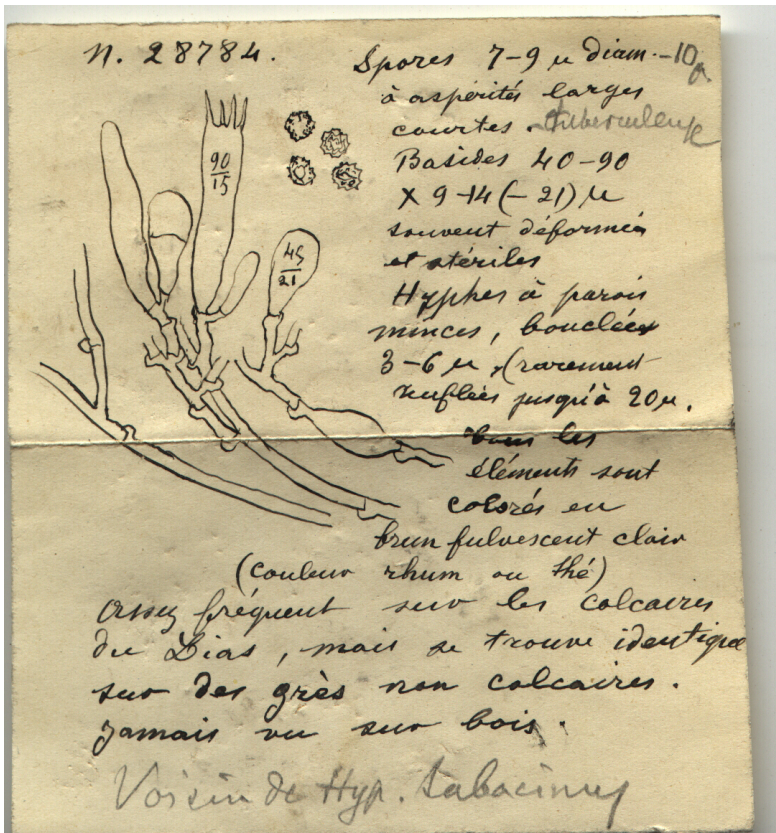


Fig. 11: Notes by Bourdot [BPI: Bourdot 28784]

References

- [1] BOURDOT, H. AND GALZIN, A. (1924). 'Hyménomycètes de France. X. Phylactériés'. *Bulletin de la Société Mycologique de France*, 40 (1-2): 105–162
- [2] BOURDOT, H. AND GALZIN, A. (1928). *Hyménomycètes de France*. Paris. 761 p.
URL: <http://bibdigital.rjb.csic.es/ldurl/1/12490>
- [3] LARSEN, M.J. (1967). 'Tomentella and related genera in North America V. New North American records of Tomentelloid fungi'. *Mycopathologia et Mycologia Applicata*, 32: 37–67
- [4] LARSEN, M.J. (1968). *Tomentelloid fungi of North America*. Syracuse. 157 p.
- [5] LARSEN, M.J. (1974). 'A contribution to the taxonomy of the genus *Tomentella*'. *Mycologia Memoirs*, 4: 1–145



Excerpts from *Crusts & Tells*

Descriptions and reports of resupinate Aphyllophorales and Heterobasidiomycetes

Authored and published by

ELIA MARTINI
Via ai Ciòss 21
CH-6676 Bignasco
Switzerland

Email: emart@aphyllo.net
<https://www.aphyllo.net>
Orcid: 0000-0002-4709-2964



Issue № 171:

Tomentella nitellina Bourdot & Galzin

Released on: 1st October, 2023

© E. Martini

This work is licensed under a [Creative Commons Attribution 4.0 International License](https://creativecommons.org/licenses/by/4.0/) (CC BY 4.0)

