

Tomentella montanensis

M.J. Larsen

Figures 1–5

Tomentella montanensis M.J. Larsen 1967 [1 : 1304] \equiv *Tomentellastrum montanensis* (M.J. Larsen) M.J. Larsen 1974 [3 : 120]

Basidiome (dry) effused, adherent, compact, firm, somewhat crustose, up to 0.5 mm thick.

Hymenophore smooth, continuous, not fissured, light brown (10YR 6/3) when young to brown with a faint reddish tint (7.5YR 5/3), old parts becoming dark greyish brown (10YR 4/2), when fresh bluish-purplish [teste R.L. Gilbertson on label].

Subhymenium somewhat thickening, relatively compact.

Subiculum scanty to well developed, tomentose to soft fibrous, dark brown (10YR 4–3/3), darker than the fertile area.

Margin sterile or fertile throughout, abrupt or shortly thinning out and discolour, very pale brown (10YR 8/3).

Rhizomorphs absent.

Hyphal system monomitic; all hyphae with simple septa.

Subicular hyphae regular to slightly irregular and sinuous, 4–6.5 (8) μm wide, sometimes anastomosed, thick-walled (0.5–1.5 μm), sometimes with localized thickenings, ochraceous to strong brown.

Subhymenial hyphae short-celled, often with slight constrictions at the septa, regular or slightly botryose, (3) 3.5–6 (9) μm wide, often cross-branched, soon with slightly thickening walls, subhyaline to ochraceous.

Cystidia absent.

Basidia mature infrequent, many collapsed, stout clavate, sometimes slightly utriform, 40–70 \times 9–11 (12) μm at top \times 6–9 μm at the lower half, subhyaline, often with ochraceous brownish content; 4 sterigmata up to 8 (9) μm long and 1.5–2.5 μm wide at the base.

Basidiospores with regular outline; lateral face ellipsoid to broadly ellipsoid with convex or slightly flattening adaxial side; frontal face broadly

ellipsoid to ovoid; polar face mostly globose; 7.5–8.23–9.0 (9.2)×(5.8) 6.0–6.59–7 (7.3)×6.5–7.17–7.7 (8) μm , $Q^1 = 1.15$ –1.25–1.34 (1.38), $Q^2 = (1.09) 1.11$ –1.15–1.18 (1.21), asperulate, not guttulate, thick-walled (0.3–0.5 μm), ochraceous, more or less concolour with subicular hyphae in mass. Aculei up to 0.6 (0.8) μm long and 0.4–0.8 μm wide at the base, single, mostly evenly distributed, sparse, blunt or almost so.

Chlamydospores absent.

Incrustation: present as subhyaline crystals on hymenial elements and sometimes also on subicular hyphae, visible in water and LA, dissolving in KOH.

Chemical reactions:

IKI—.

CB— all elements acyanophilous.

KOH: some parts of hymenium can show a faint bluish grey/green pigmentation in contact with air: an inconstant feature. Some subicular hyphae with distinctly swelling and stratified walls.

Specimen examined

USA — **Montana** – Flathead Lake, Montana State University Biological Station, on decayed wood of *Alnus* sp., leg. R.L. Gilbertson, 2.VIII.1964, isotype of *Tomentella montanensis* M.J. Larsen (SYRF: RLG 4857)

Materials and methods

Specimens sampling and methodological details are described separately in this issue:

Excerpts from *Crusts & Fells*, n° 0

References

- [1] LARSEN, M.J. (1967). ‘*Tomentella* and related genera in North America III. New species of *Tomentella* and *Pseudotomentella*’. *Canadian Journal of Botany*, 45 (8): 1297–1307. DOI: [10.1139/b67-137](https://doi.org/10.1139/b67-137)
- [2] LARSEN, M.J. (1968). *Tomentelloid fungi of North America*. Syracuse. 157 p.
- [3] LARSEN, M.J. (1974). ‘A contribution to the taxonomy of the genus *Tomentella*’. *Mycologia Memoirs*, 4: 1–145

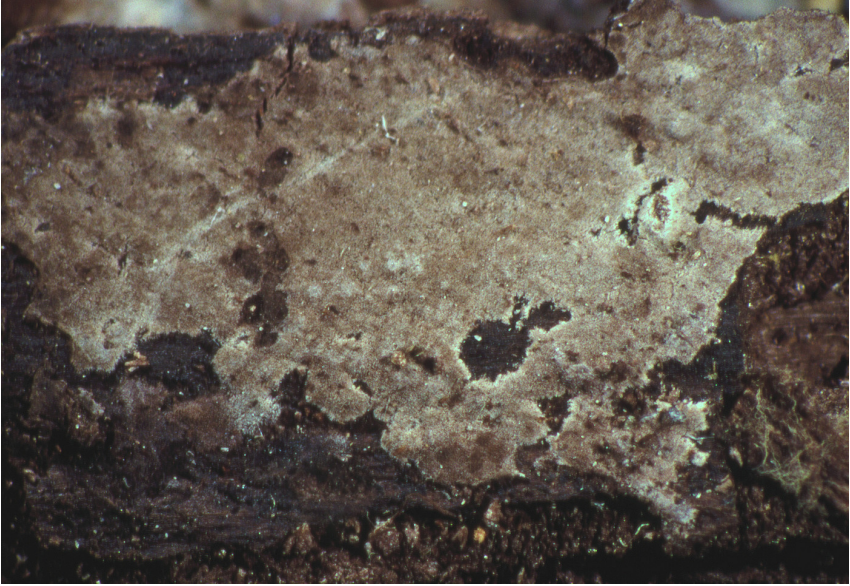


Fig. 1: Dried basidiome; ex isotype of *Tomentella montanensis* M.J. Larsen. Image width = 10 mm [SYRF: RLG 4857]

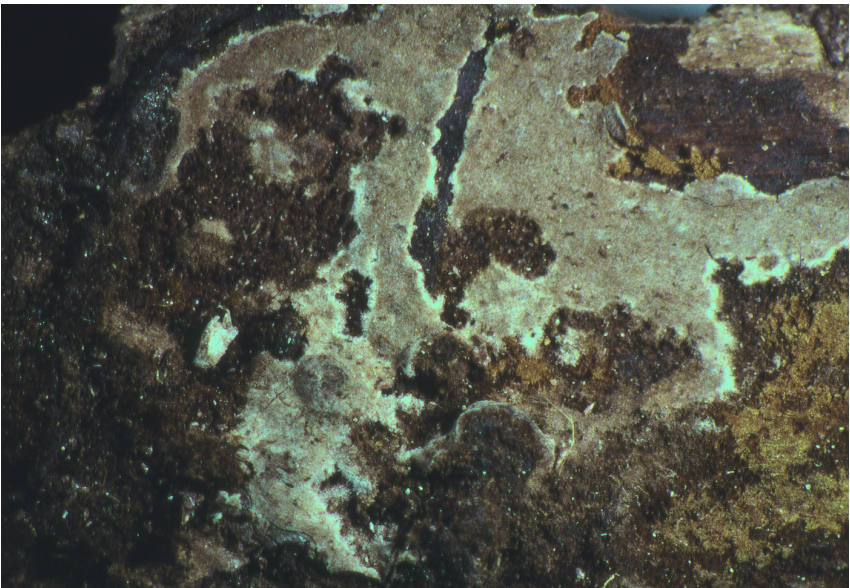


Fig. 2: Dried basidiome; ex isotype of *Tomentella montanensis* M.J. Larsen. Image width = 10 mm [SYRF: RLG 4857]

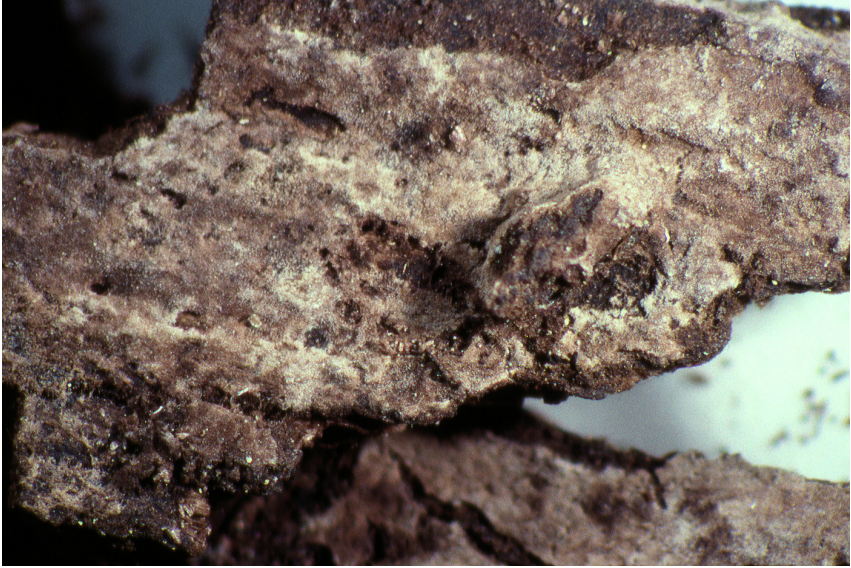


Fig. 3: Basidiome; ex isotype of *Tomentella montanensis* M.J. Larsen. Image width = 10 mm [SYRF: RLG 4857]

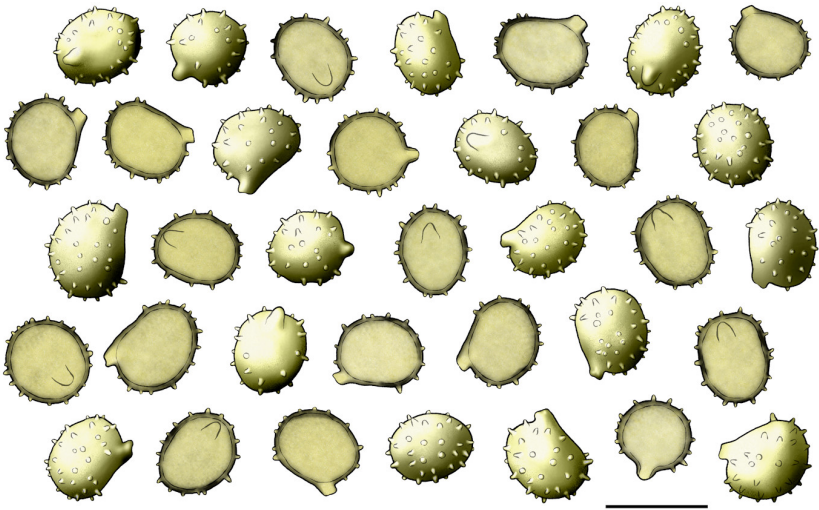


Fig. 4: Basidiospores. Bar = 10 μ m [SYRF: RLG 4857]

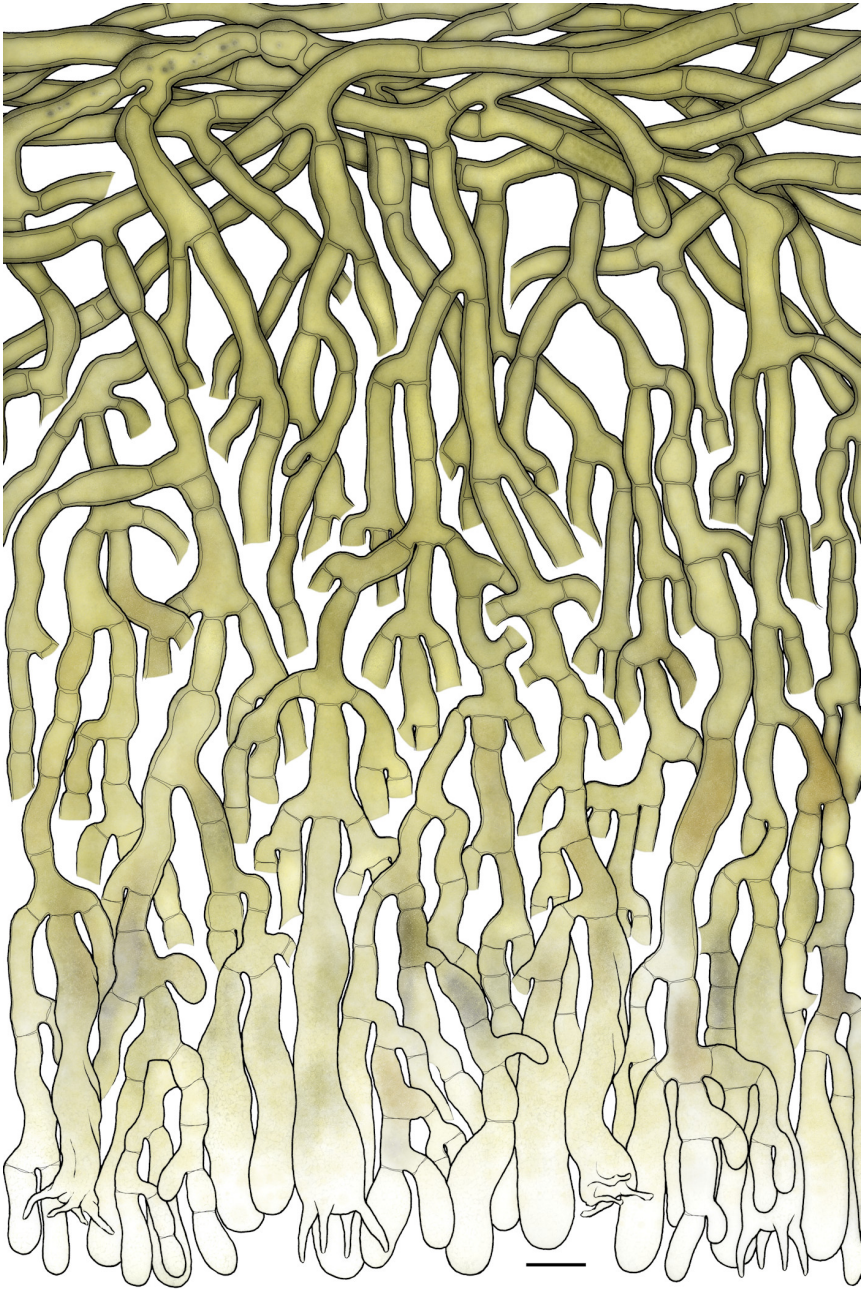


Fig. 5: Simplified vertical section through the basidiome. Bar = 10 μ m [SYRF: RLG 4857]



Excerpts from *Crusts & Tells*

Descriptions and reports of resupinate Aphyllophorales and Heterobasidiomycetes

Authored and published by

ELIA MARTINI
Via ai Ciòss 21
CH-6676 Bignasco
Switzerland

Email: emart@aphyllo.net
<https://www.aphyllo.net>
Orcid: 0000-0002-4709-2964



Issue № 169:

Tomentella montanensis M.J. Larsen

Released on: 1st July, 2023

© E. Martini

This work is licensed under a [Creative Commons Attribution 4.0 International License](https://creativecommons.org/licenses/by/4.0/) (CC BY 4.0)

