

*Tomentella angulospora*

M.J. Larsen

Figures 1–6

*Tomentella angulospora* M.J. Larsen 1975 [1 : 172] CFMR!

**Basidiome** effused, adherent, somewhat subceraceous, up to 0.1 mm thick.

**Hymenophore** finely discontinuous to continuous, minutely tufted to finely granulose, single granules sparse to crowded, in old parts forming an almost continuous hymenophore, greyish brown to brown (10YR 5–4/2–3).

**Subhymenium** slightly thickening.

**Subiculum** indistinct, poorly developed, araneous.

**Margin** indistinct, pruinose.

**Hyphal system** monomitic; all hyphae with fibulate primary septa.

**Subicular hyphae** difficult to find, indistinct from subhymenial hyphae, regular to slightly irregular, sinuous, 2–3.5 µm, often branching from clamps, with relatively short cells up to 30–40 µm long, thin-walled, subhyaline to very pale yellowish brown.

**Subhymenial hyphae** regular to slightly irregular, 2–4 (4.5) µm, richly branched, thin-walled, subhyaline, often with diffuse yellowish brown to olivaceous content.

**Rhizomorphs** absent.

**Cystidia** absent; scattered hyphidia may be present in hymenium, 1.5–2.5 µm in diam, thin-walled, hyaline.

**Basidia** narrowly clavate to slightly utriform, 22–40×6–7.5 µm wide at top, 4.5–6.5 (7) µm at the lower middle, subhyaline, often with yellowish brown to olivaceous diffuse content; 4 sterigmata up to 5 (7) µm long and 1–1.5 (2) µm wide at the base.

**Basidiospores** with irregular to strongly lobed outline; lateral face irregularly ellipsoid to 3-lobed with flattening or convex adaxial side; frontal face isodiametric, mostly 3 lobed, sometimes also with 4 (5) squared to

rounded lobes; polar face irregularly ellipsoid to 3-lobed, (5.5) 6.0–7.5 (8)  $\mu\text{m}$  long, (4.5) 5.0–5.8 (6.5)  $\mu\text{m}$  in side view, (6.0) 6.2–7.5 (8)  $\mu\text{m}$  in frontal view,  $Q^1 = (1.1) 1.2\text{--}1.4 (1.5)$ ,  $Q^2 = 0.9\text{--}1.1$ , shortly echinulate, not guttulate, with thickening wall, yellow to yellowish brown, concolorous with other elements in mass. Aculei single, sometimes divergent over a small wart, rarely paired at the base, obtuse to tapering, up to 1  $\mu\text{m}$  long and 0.3–0.6  $\mu\text{m}$  wide at the base. Apiculus normally **central to subcentral** in lateral and frontal views.

**Chlamydospores** absent.

**Incrustation:** present in water mounts as small granules coarsely incrusting elements and as amorphous brown to dark brown matter dissolving in KOH.

**Chemical reactions:**

IKI—.

KOH: in presence of air most preparations show some basidia and hyphal segments turning olivaceous, green to very dark green or, more rarely, some mounts can show a distinct cyanescence reaction with elements assuming a distinct bluish-lilac tint.

CB: spores acyanophilous at least when mature, other elements doubtfully cyanophilous.

## Specimens examined

USA — **New York** – New York State Conserv. Dept., State Land in Region IX, on decayed wood of *Pinus sp.*, leg. M.J. Larsen, 7.VIII.1963 (CFMR MJL-270) – Schroom Lake, on strongly decayed wood of hardwood, leg. M.J. Larsen, 3.VIII.1964 (CFMR MJL-842) – *ibid.*, on strongly decayed wood of *Acer sp.*, leg. M.J. Larsen, 3.VIII.1964, holotype of *Tomentella angulospora* M.J. Larsen (CFMR MJL-840)

## Materials and methods

Specimens sampling and methodological details are described separately in this issue:

Excerpts from *Crusts & Fells*, n° 0

## References

- [1] LARSEN, M.J. (1975). 'Some new North American species of *Tomentella*'. *Nova Hedwigia. Beiheft*, 51: 171–175

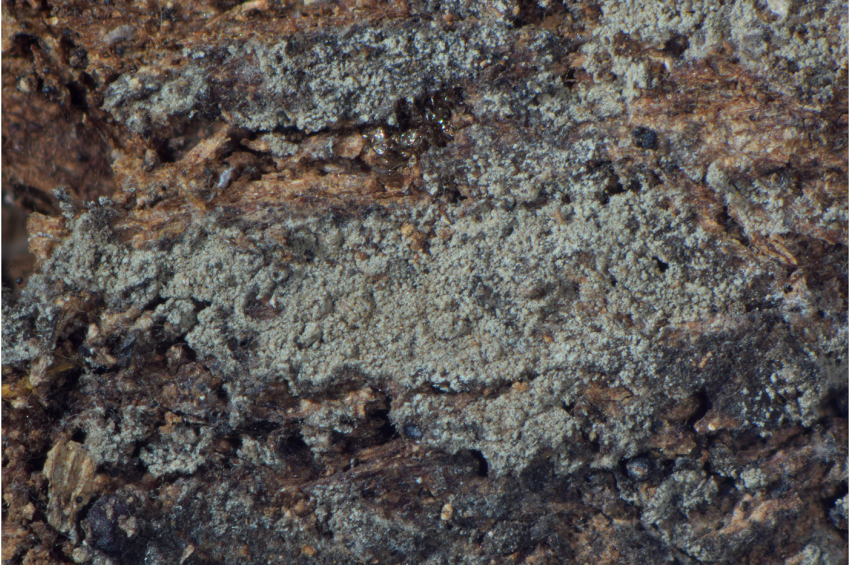


Fig. 1: Detail of the hymenophore (dry). Image width = 9 mm [CFMR MJL-840]



Fig. 2: Detail of the hymenophore (dry). Image width = 9 mm [CFMR MJL-840]

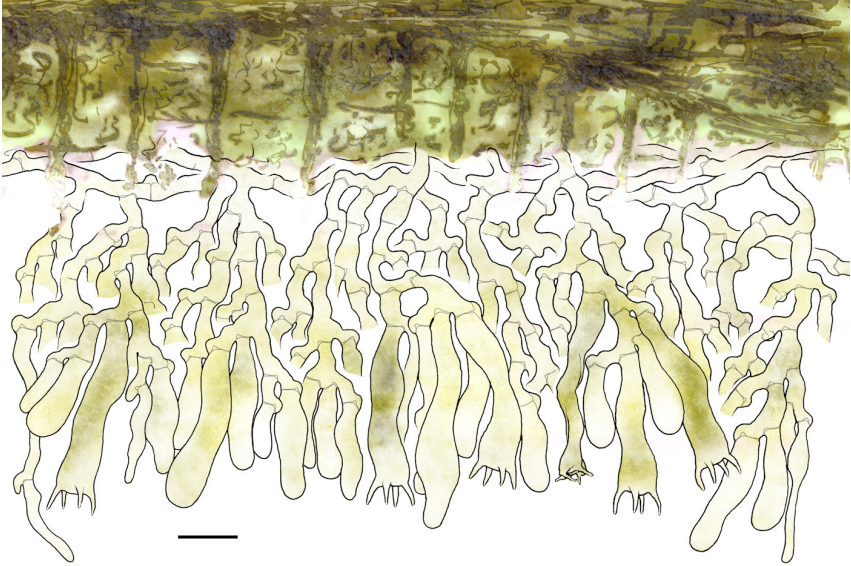


Fig. 3: Simplified vertical section through basidiome and substrate. Bar = 10  $\mu\text{m}$  [CFMR MJL-840]

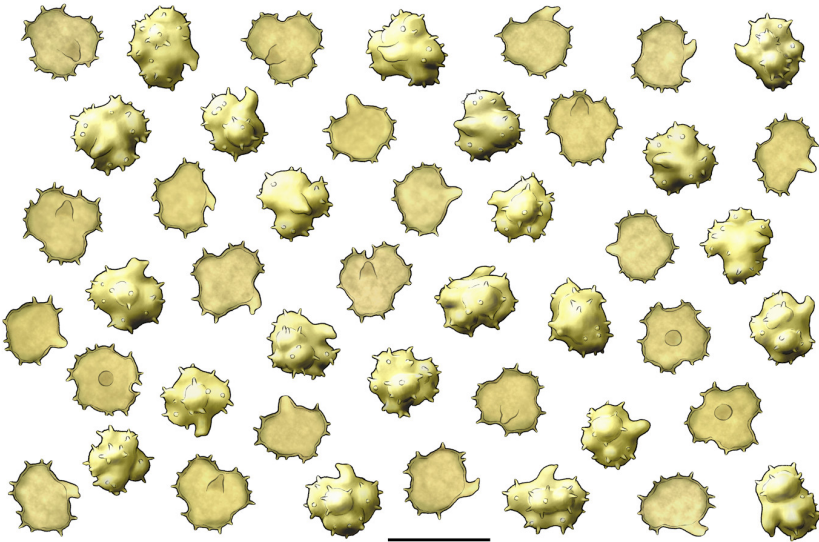


Fig. 4: Basidiospores. Bar = 10  $\mu\text{m}$  [CFMR MJL-840]



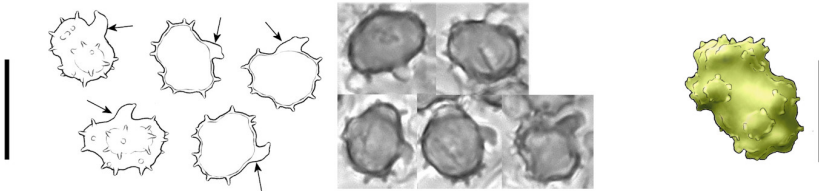


Fig. 5: Basidiospores in side view: note the central position of the hooked apiculus.  
— On the right, a macrospore. Bar = 10  $\mu\text{m}$  [CFMR MJL-840]

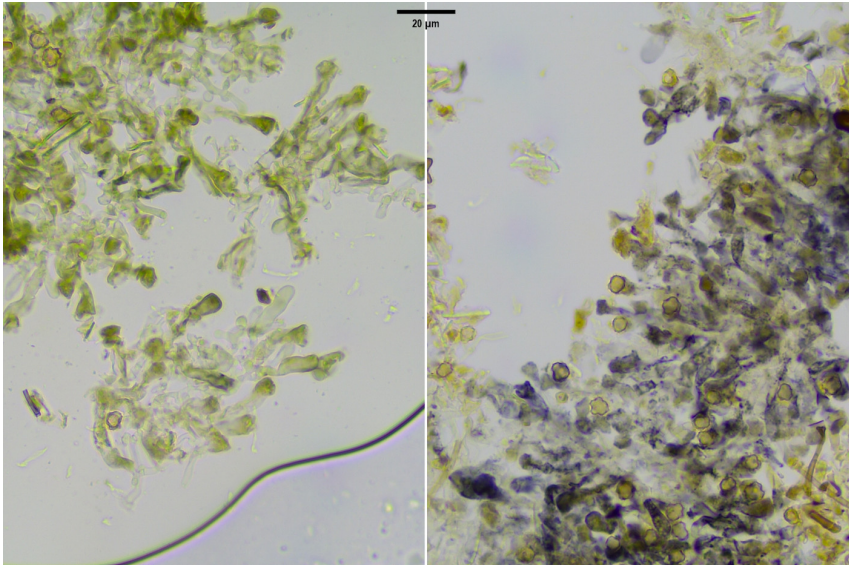


Fig. 6: Mount in KOH with presence of air. Left side: normal reaction with elements staining yellow-green-olivaceous. Right side: inconstant but distinct cyanescent reaction. Bar = 10  $\mu\text{m}$  [CFMR MJL-840]



# Excerpts from *Crusts & Tells*

Descriptions and reports of resupinate Aphyllophorales and Heterobasidiomycetes

Authored and published by

ELIA MARTINI  
Via ai Ciòss 21  
CH-6676 Bignasco  
Switzerland

Email: [emart@aphyllo.net](mailto:emart@aphyllo.net)  
<http://www.aphyllo.net>  
Orcid: 0000-0002-4709-2964



Issue № 166:

*Tomentella angulospora* M.J. Larsen

Released on: 1<sup>st</sup> April, 2023

© E. Martini

This work is licensed under a [Creative Commons Attribution 4.0 International License](https://creativecommons.org/licenses/by/4.0/) (CC BY 4.0)

