

## № 164

*Tomentella fungicola*

(Litsch.) M.J. Larsen

Figures 1–4

*Tomentella flaccida* var. *fungicola* Litsch. 1933 [2 : 64] PRM!  $\equiv$  *Tomentella fungicola* (Litsch.) M.J. Larsen 1974 [1 : 55]

**Basidiome** effused, fragile, loosely adherent, slightly pellicular.

**Hymenophore** smooth, continuous, pruinose, pulverulent, almost detachable from subiculum, uniformly olivaceous yellow (2.5Y–10YR 6/6).

**Subiculum** araneous, hypochnoid, dark olivaceous brown to dark reddish brown, 2.5Y–5YR 3/2, distinctly darker than the fertile area.

**Margin** indistinct or shortly thinning out and concolorous with the subiculum.

**Rhizomorphs** present in subiculum and more frequently in cracks of the substrate, up to 0.1 mm thick, rigid, brownish to dark brown.

**Hyphal system** dimitic with skeletal hyphae associated with rhizomorphs.

**Subicular hyphae** regular, mostly with fibulate primary septa but frequently also with simple-septate segments and frequent secondary septa, 5–7  $\mu$ m, with thickening or thick wall and localized thickenings, yellow brown to brown; some narrow hyphae, 2.5–4  $\mu$ m diam. with adventitious simple septa can also be found because spreading off from rhizomorphs.

**Subhymenial hyphae** fibulate, 4–10  $\mu$ m, sometimes with short and slightly botryose cells, soon with thickening wall, hyaline to yellowish.

**Rhizomorphs** starting as thin strands of generative hyphae 5–8  $\mu$ m wide with thick walls (up to 2  $\mu$ m), branched and becoming progressively thinner with less fibulate septa and frequent simple septa, giving rise to straight or slightly sinuous skeletal hyphae sometimes branching without septa and frequent secondary septa, 1.5–2.5  $\mu$ m in diam.; well developed rhizomorphs with numerous skeletal hyphae on surface.

**Cystidia** absent.

**Basidia** subcylindrical, slightly sinuous, 40–60 $\times$ 8–11  $\mu$ m, fibulate at the basal septum; 4 sterigmata 6–9  $\mu$ m long and 1.5–2.5  $\mu$ m wide at the base.

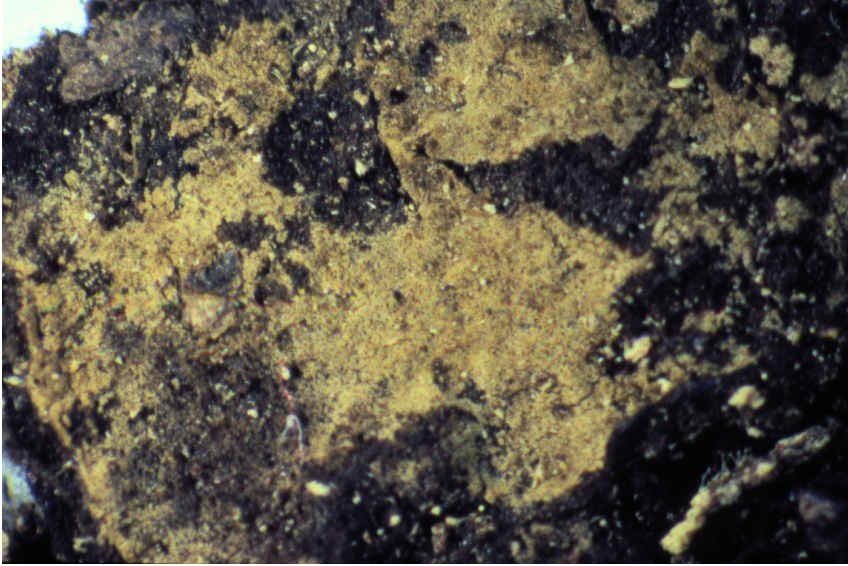


Fig. 1: Basidiome; ex isotype of *Tomentella fungicola* [PRM 704214]

**Basidiospores** with regular outline; in side view subglobose to broadly ellipsoid with convex or slightly flattening adaxial side; in frontal view globose to subglobose or broadly ovoid; in polar view globose to subglobose; (8.8) 9.0–10.45–12.0 (12.4)  $\mu\text{m}$  long, (7.2) 7.4–8.61–9.4 (9.6)  $\mu\text{m}$  in side view, (8.5) 8.8–9.64–10.4 (11.0)  $\mu\text{m}$  in frontal view,  $Q^1 = (1.09)$  1.13–1.23–1.30 (1.33),  $Q^2 = (1.00)$  1.04–1.07–1.11 (1.13), echinulate, with rather thin walls (0.2–0.5  $\mu\text{m}$ ) yellowish to ochraceous. Aculei up to 1.2 (1.8)  $\mu\text{m}$  long and 0.5–1 (1.2)  $\mu\text{m}$  wide at the base. Apiculus IKI—.

**Chlamydospores** absent.

**Incrustation:** none.

**Chemical reactions:** IKI—. KOH—.

## Specimen examined

TURKEY – Ilgaz-Dagh, on *Abies bornmulleriana*, leg. A. Pilat, isotype of *Tomentella flaccida* var. *fungicola* Litsch. (PRM 704214)

## Materials and methods

Specimens sampling and methodological details are described separately in this issue:

Excerpts from *Crusts & Jells*, n° 0



Fig. 2: Rhizomorphs; ex isotype of *Tomentella fungicola*. Bar = 10  $\mu\text{m}$  [PRM 704214]



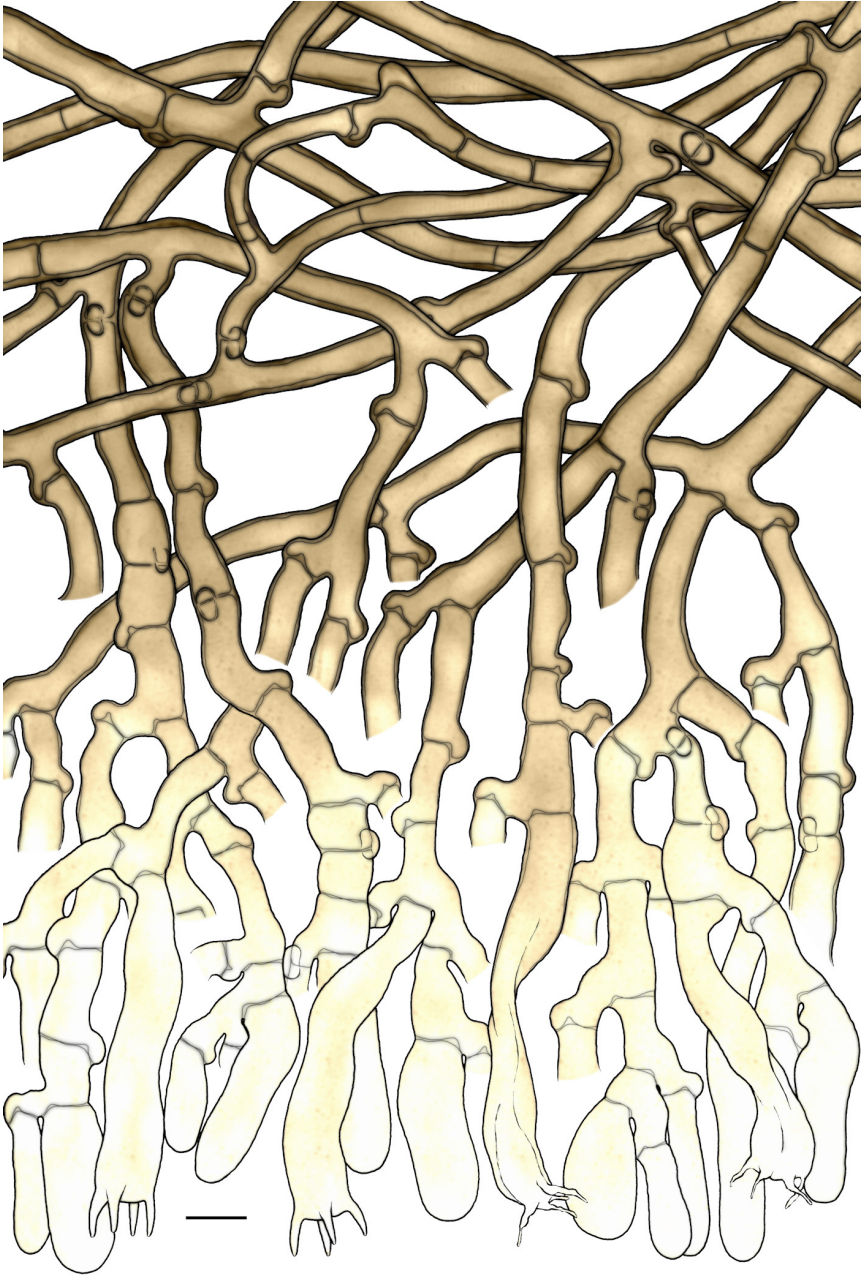


Fig. 3: Basidia, subhymenial and subicular hyphae; ex isotype of *Tomentella fungicola*. Bar = 10  $\mu$ m [PRM 704214]

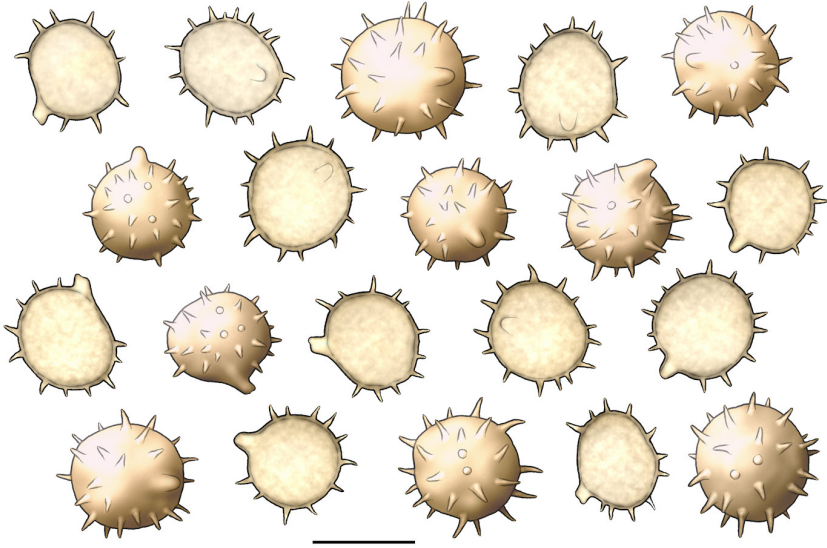


Fig. 4: Basidiospores; ex isotype of *Tomentella fungicola*. Bar = 10  $\mu\text{m}$  [PRM 704214]

## References

- [1] LARSEN, M.J. (1974). 'A contribution to the taxonomy of the genus *Tomentella*'. *Mycologia Memoirs*, 4: 1–145
- [2] LITSCHAUER, V. (1933). 'Addimenta ad floram Asiae Minoris Hymenomycetum, *Phylacteriaceae*'. *Bulletin de la Société Mycologique de France*, 49: 52–75
- [3] PEINTNER, U. AND DÄMMRICH, F. (2012). '*Tomentella alpina* and other tomenteloid taxa fruiting in a glacier valley'. *Mycological Progress*, 11 (1): 109–119. DOI: [10.1007/s11557-010-0734-x](https://doi.org/10.1007/s11557-010-0734-x)



# Excerpts from *Crusts & Tells*

Descriptions and reports of resupinate Aphyllophorales and Heterobasidiomycetes

Authored and published by

ELIA MARTINI  
Via ai Ciòss 21  
CH-6676 Bignasco  
Switzerland

Email: [emart@aphyllo.net](mailto:emart@aphyllo.net)  
<http://www.aphyllo.net>  
Orcid: 0000-0002-4709-2964



Issue № 164:

*Tomentella fungicola* (Litsch.) M.J. Larsen

Released on: 1<sup>st</sup> February, 2023

© E. Martini

This work is licensed under a [Creative Commons Attribution 4.0 International License](https://creativecommons.org/licenses/by/4.0/) (CC BY 4.0)

