

## № 162

*Tomentella kootenaiensis*

M.J. Larsen

Figures 1–6

*Tomentella kootenaiensis* M.J. Larsen 1975 [1 : 174] CFMR!

**Basidiome** effused, adherent, at first discontinuous, pruinose, porulose, tufted, rather soft, then continuous, tomentose relatively compact, rather firm in more developed parts, up to 0.2 mm thick.

**Hymenophore** at first porulose to granulose, becoming smooth or shallowly colliculose in some parts, greyish brown (10YR 5/(2) 3, some small becoming may turn dark brown to very dark greyish brown (10YR 3/3–2).

**Subhymenium** thickening, loose when young, compact in older parts.

**Subiculum** almost lacking or indistinct, rarely present and very thin, rusty to dark yellowish brown, differently coloured than hymenium.

**Margin** mostly fertile throughout, abrupt or indefinitely thinning out, pruinose to porulose, tufted, concolorous with the fertile area, in some parts also discolour up to very pale brown (10YR 7/4).

**Rhizomorphs** absent.

**Hyphal system** monomitic; subhymenial hyphae with constantly fibulate septa; subicular hyphae mostly fibulate but with some segments with simple septa or obliterate clamps, and repetitive secondary septa.

**Subicular hyphae** normally few, sometimes difficult to find, regular and long-celled to sinuous, somewhat irregular, rather short-celled, often slightly inflating, 4–8 (10)  $\mu\text{m}$  wide, with thick to solid wall, 1–2 (3)  $\mu\text{m}$  wide, sometimes branching from clamps but normally at some distance from them, smooth, becoming ochraceous.

**Subhymenial hyphae** more or less regular, rather short-celled, (2) 3–5 (6)  $\mu\text{m}$  wide, thin-walled subhyaline to light yellowish near the hymenium, with progressively thickening wall and more yellowish brown next to the substratum.

**Cystidia** absent.

**Basidia** slender, narrowly clavate, sinuous, 45–65 (80)  $\times$  7–10 (11)  $\mu\text{m}$ ,

subhyaline to very pale yellowish brown, secondary septa frequent; (2) 4 sterigmata, up to 8  $\mu\text{m}$  long and 1.5–2  $\mu\text{m}$  wide at the base.

**Basidiospores** with regular to slightly irregular-sinuous outline; lateral face ellipsoid to broadly ellipsoid with slightly flattening adaxial side; frontal face broadly ovoid to broadly ellipsoid; polar face globose; (7.5) 8–8.7–10 (11)  $\times$  (6.3) 6.5–7.05–8.3 (8.6)  $\times$  (6.8) 7–8–9.2 (9.5)  $\mu\text{m}$ ,  $Q^1 = 1.1$ –1.2–1.3 (1.4),  $Q^2 = 1.04$ –1.11–1.2 (1.22), echinulate, not guttulate, with slightly thickening wall, light yellowish brown to yellowish brown, concolour with basal hyphae in mass.

Aculei single, almost evenly distributed, tapering, up to 1.2 (1.5)  $\mu\text{m}$  long and 0.3–0.8  $\mu\text{m}$  wide at the base. Macrospores sometimes present, 12–15  $\mu\text{m}$  across, outline and ornamentation as normal ones.

**Chlamydospores** absent.

**Incrustation:** in some mounts (water and KOH) adhering bluish-greyish-blackish granules may be present in hymenium and subhymenium.

**Chemical reactions:** IKI—. KOH—. CB: many spores cyanophilous or with cyanophilous ornamentation; hyphae and basidia not or doubtfully cyanophilous.

## Specimens examined

CANADA — **Alberta** – Nigel Pass, on wood of a decayed branch of hardwood, leg. M.J. Larsen, 15.VIII.1970 (CFMR MJL-4118) — **British Columbia** – Kootenay Nat. Park, Sinclair Creek, on wood of a lying, rather hard branch on charred wood, leg. M.J. Larsen, 4.IX.1970 (CFMR MJL-4416) – Kootenay National Park, Sinclair Creek, on wood of *Populus* sp., leg. M.J. Larsen, 4.IX.1970, holotype of *Tomentella kootenaiensis* M.J. Larsen (CFMR: MJL 4452)

## Materials and methods

Specimens sampling and methodological details are described separately in this issue:

Excerpts from *Crusts & Fells*, n° 0

## References

- [1] LARSEN, M.J. (1975). 'Some new North American species of *Tomentella*'. *Nova Hedwigia. Beiheft*, 51: 171–175

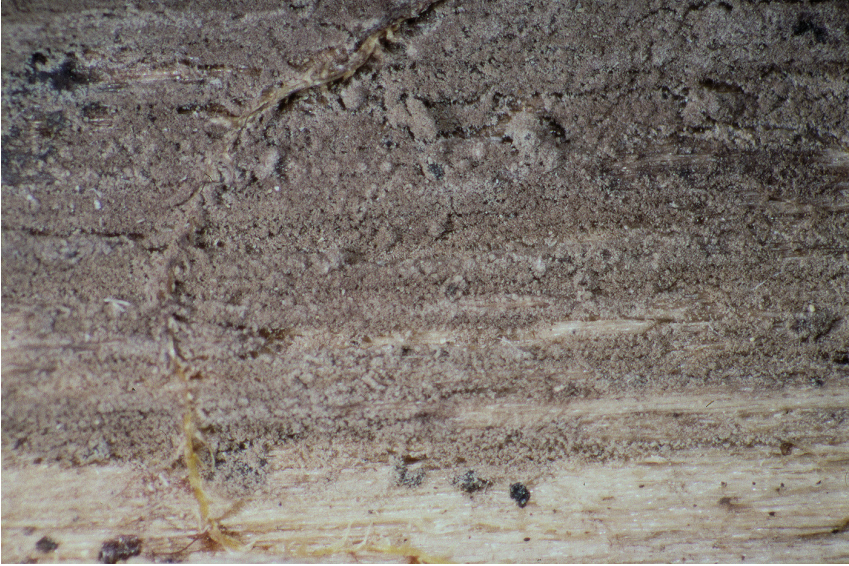


Fig. 1: Detail of the hymenophore and margin; ex holotype of *T. kootenaiensis*. Image width = 9 mm [CFMR: MJL 4452]



Fig. 2: Detail of the hymenophore; ex holotype of *T. kootenaiensis*. Image width = 12 mm [CFMR: MJL 4452]





Fig. 3: Detail of the hymenophore. Image width = 9 mm [CFMR MJL-4118]

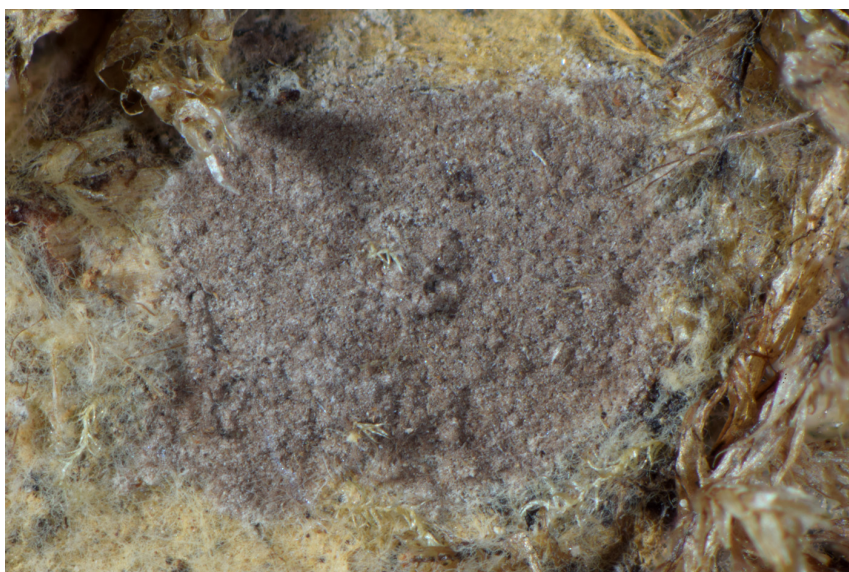


Fig. 4: Basidiome surrounded by *Amphinema byssoides*. Image width = 9 mm [CFMR MJL-4118]

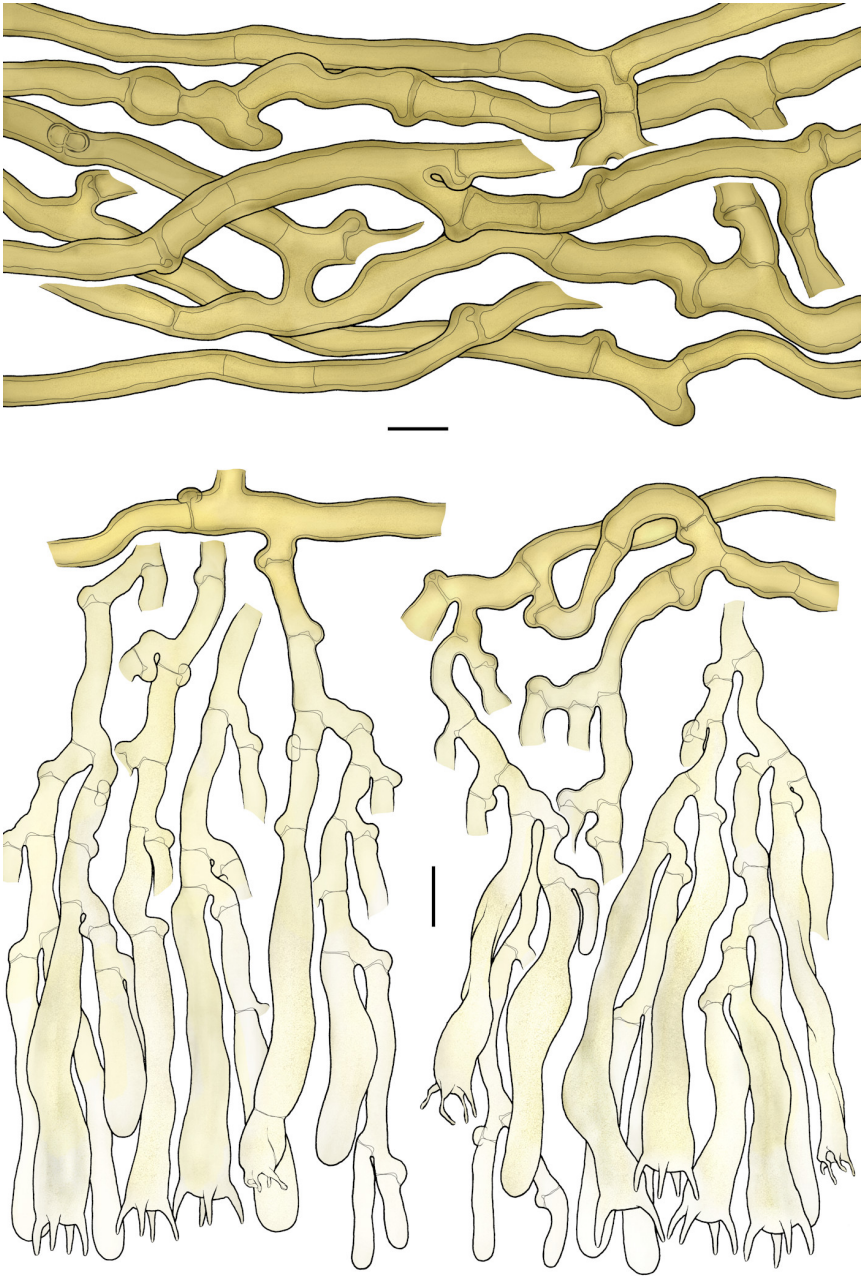


Fig. 5: Basidia, subhymenial and subicular hyphae. A) ex holotype of *T. kootenaiensis* B) and C) ex MJL-4118. Bar = 10  $\mu$ m

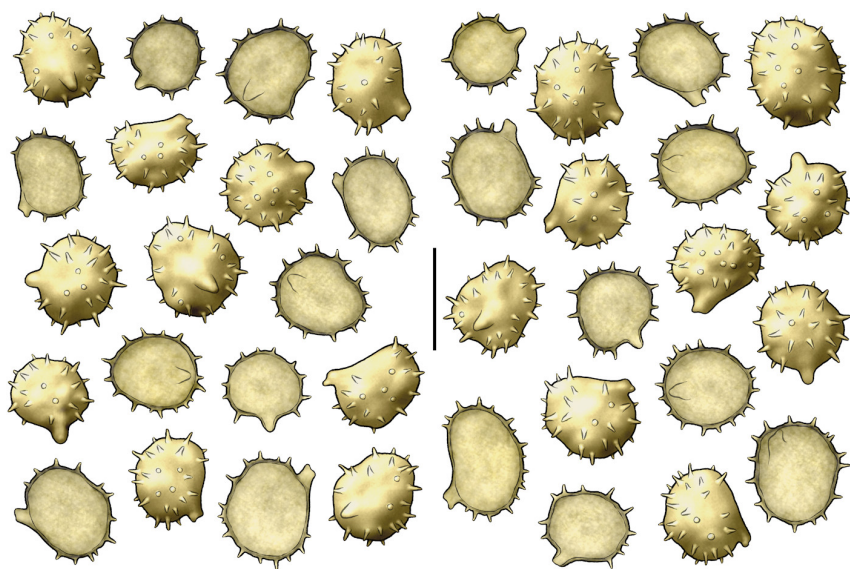


Fig. 6: Basidiospores: on the left side ex holotype of *T. kootenaiensis*; on the right side ex MJL-4118. Bar = 10  $\mu$ m



# Excerpts from *Crusts & Tells*

Descriptions and reports of resupinate Aphyllophorales and Heterobasidiomycetes

Authored and published by

ELIA MARTINI  
Via ai Ciòss 21  
CH-6676 Bignasco  
Switzerland

Email: [emart@aphyllo.net](mailto:emart@aphyllo.net)  
<http://www.aphyllo.net>  
Orcid: 0000-0002-4709-2964



Issue № 162:

*Tomentella kootenaiensis* M.J. Larsen

Released on: 1<sup>st</sup> December, 2022

© E. Martini

This work is licensed under a [Creative Commons Attribution 4.0 International License](https://creativecommons.org/licenses/by/4.0/) (CC BY 4.0)

