

№ 156

Tomentella fuscoferruginosa

(Bres.) Litsch.

Figures 1–5

Hypochnus fuscoferruginosus Bres. 1903 [1 : 109] FH! \equiv *Tomentella fuscoferruginosa* (Bres.) Litsch. 1939 [2 : 16]

Basidiome effused, adherent, soft membranaceous, tomentose, 0.3–0.7 mm thick.

Hymenophore becoming almost smooth and continuous, somewhat firm, light to medium brown (10YR 6/4–4/4), some diffuse small parts becoming dull and slightly reddish (up to 5YR 3/4).

Subhymenium normally developed, about 0.1 (0.2) mm thick, not thickening but in some parts of the type specimen may become bi-stratified (stop and restart event).

Subiculum well developed, up to 0.5 mm thick, soft and fibrous when fresh, loosely tomentose when dry, dark to very dark brown, almost blackish (10YR 2/2–1), much darker than the fertile area.

Margin sterile or almost so, abrupt or shortly thinning out, pruinose, dark brown to almost blackish, darker than the fertile area and concolorous with the subiculum.

Hyphal system monomitic; all hyphae with fibulate primary septa; some scattered simple septa are also present.

Subicular hyphae regular or almost so, 5–10 μ m wide, thick-walled (walls 1–2 μ m thick), often with some localized thickenings and 'elbow-like bends', brownish to dark brown.

Subhymenial hyphae regular, (3.5) 4–5 (7) μ m wide, soon with thickening wall, subhyaline to pale brown.

Rhizomorphs absent.

Cystidia absent.

Basidia sinuous-cylindrical to somewhat utriform, 40–65 (75) \times 8–11 μ m at top, 6–10 μ m at the lower middle, hyaline to pale ochre-brown; (2) 4 sterigmata 7–9 μ m long and 1.5–2.5 (3) μ m wide at the base.

Basidiospores with irregular to distinctly lobed outline; lateral face irregularly ellipsoid to obliquely pyriform, with flattening adaxial side; frontal face triangular to 3-lobed; polar face irregularly globose to 3-lobed, $8.5\text{--}10.5 \times 6.5\text{--}7.5$ (8) $\times 7\text{--}9$ (9.5) μm , $Q^1 = (1.15)\ 1.2\text{--}1.3$ (1.4), $Q^2 = 1.05\text{--}1.2$, echinulate, with thickening to thick wall, dull yellow to light brown; aculei 1–2 (2.5) μm long and 0.5–1 (1.2) μm wide at the base, single, sparse, rarely paired at the base, often with a large oil drop.

Chlamydospores absent.

Incrustation: almost none; no yellow-reddish material visible in water mounts.

Chemical reactions: IKI: some parts of subhymenial hyphae and basidia may be amyloid; spore **apiculus amyloid**. KOH: elements becoming slightly duller (loosing yellow hue). CB: thin-walled elements sometimes cyanophilous; thick-walled elements acyanophilous.

Specimens examined

FRANCE — **Aveyron** – Salles-la-Source, La Camazelle, on wood of a lying, decayed branch of a deciduous tree, leg. E. Martini, 14.X.2018 (em-13528.1)

POLAND – [Unknown locality], on *Frangula alnus*, leg. Eichler 84, holotype of *Hy-pochnus fuscoferruginosus* Bres. (FH: v.Höhnelt herb, sheet 1983)

SWITZERLAND — **Ticino** – Roseto (Valle Bavona), on bark of a lying, decayed branch of a deciduous tree, leg. E. Martini, 4.IX.2018 (em-13464)

Materials and methods

Specimens sampling and methodological details are described separately in this issue:
[Excerpts from *Crusts & Fells*, n° 0](#)

References

- [1] BRESADOLA, G. (1903). ‘Fungi polonici a cl. Viro B. Eichler lecti’. *Annales Mycologici*, 1 (1-2): 65–131 + t. III. URL: <http://www.cybertruffle.org.uk/cyberliber/59685/>
- [2] LITSCHAUER, V. (1939). ‘Beitrag zur Kenntnis der resupinaten Phylacteriaceen von Südserbien’. *Bulletin de la Société Scientifique de Skoplje, Sect. Sciences Naturelles* = *Glasnik Skopskog naučnog društva, Skopsko naučno društvo*, 7: 13–22



Fig. 1: Basidiome. Image width = 22 mm [em-13464]

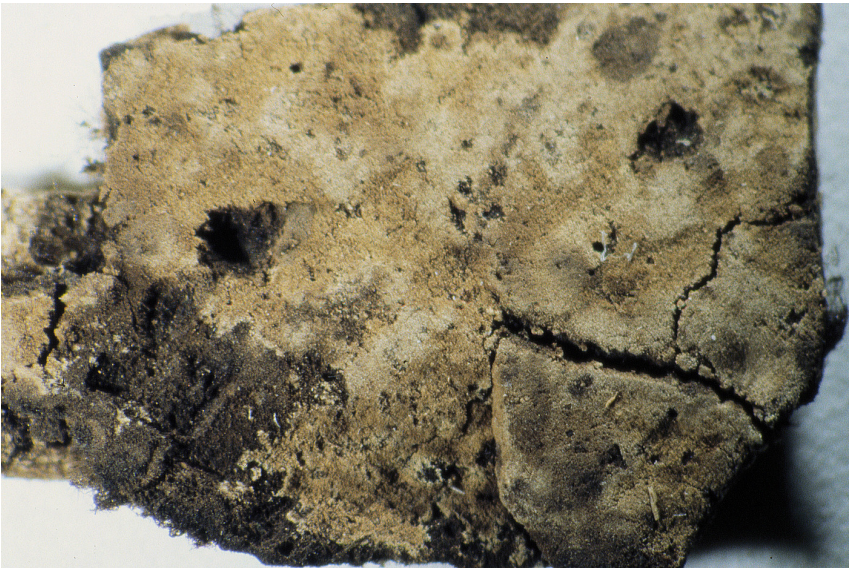


Fig. 2: Dried basidiome; ex holotype of *Hypochnus fuscoferruginosus* Bres. Image width = 9 mm [FH: v.Höhnelt herb, sheet 1983]

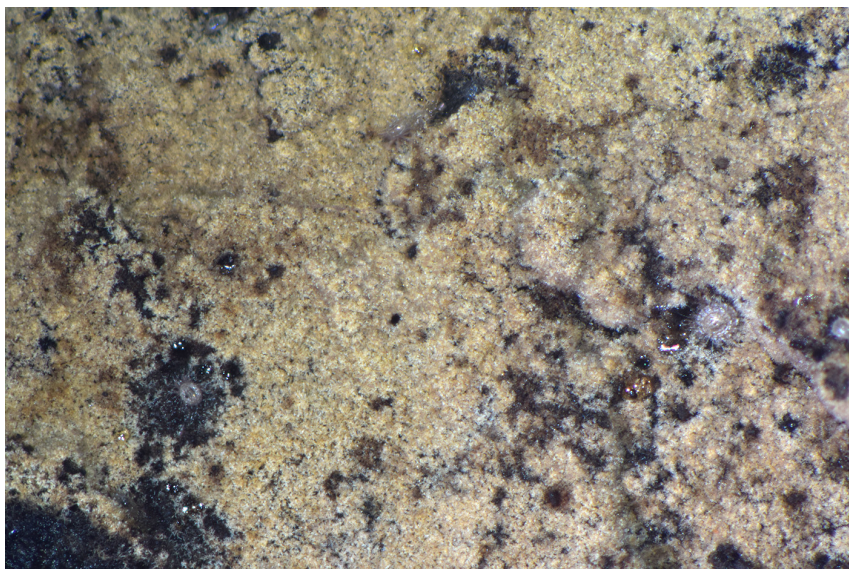


Fig. 3: Detail of the hymenophore. Image width = 9 mm [em-13464]



Fig. 4: Subiculum (almost black) and net of subicular hyphae; ex holotype of *Hypochnus fuscoferruginosus* Bres. [FH: v.Höhnelt herb, sheet 1983]

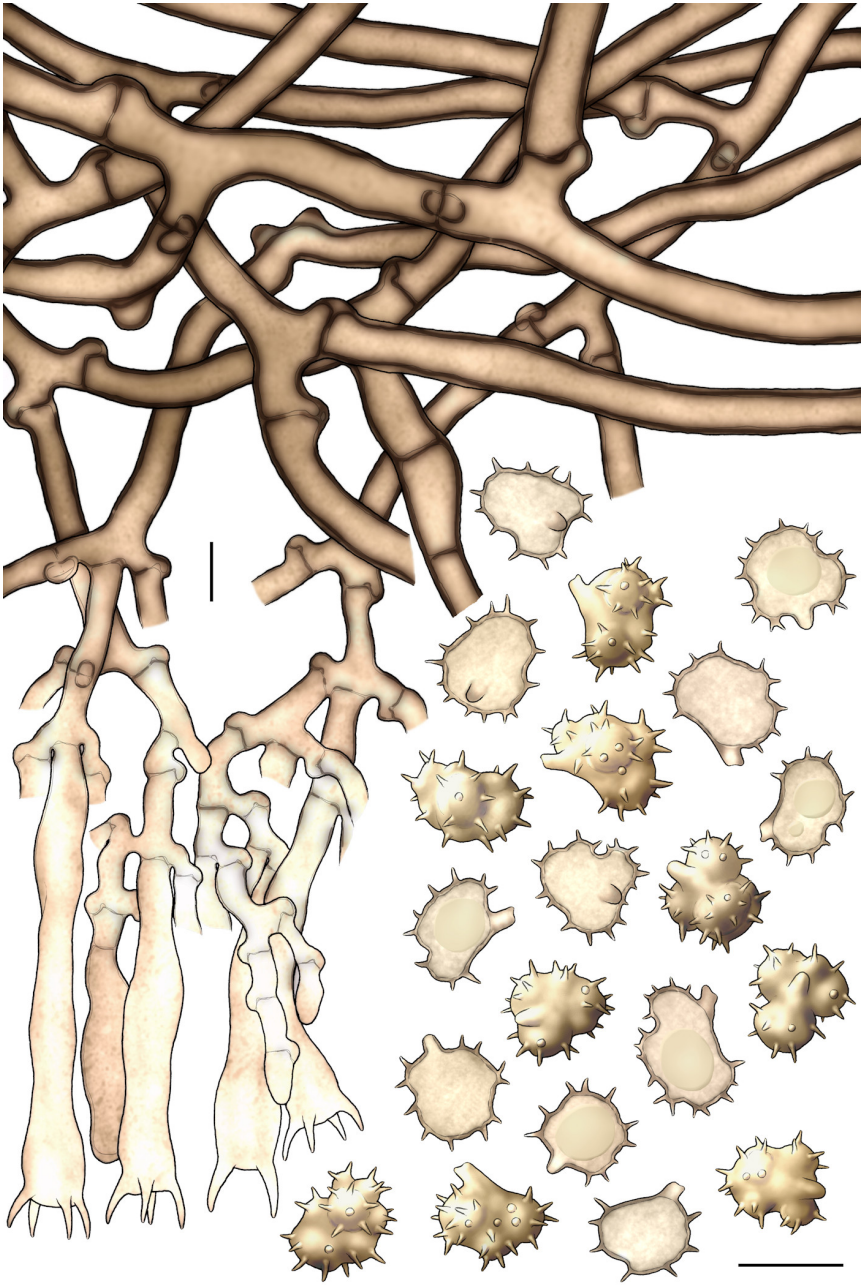


Fig. 5: Basidia, subhymenial and subicular hyphae, basidiospores. Bar = 10 μm
[FH: v.Höhnelt herb, sheet 1983]



Excerpts from *Crusts & Tells*

Descriptions and reports of resupinate Aphyllophorales and Heterobasidiomycetes

Authored and published by

ELIA MARTINI
Via ai Ciòss 21
CH-6676 Bignasco
Switzerland

Email: emart@aphyllo.net
<http://www.aphyllo.net>
Orcid: 0000-0002-4709-2964



Issue № 156:

Tomentella fuscoferruginosa (Bres.) Litsch.

Released on: 1st June, 2022

© E. Martini

This work is licensed under a [Creative Commons Attribution 4.0 International License](https://creativecommons.org/licenses/by/4.0/) (CC BY 4.0)

