

№ 152

Thelephora perplexa

Burt

Figures 1–6

Thelephora perplexa Burt 1914 [2 : 223] K!= *Thelephora dentosa* Berk. & M.A. Curtis 1869 [1 : 329] teste Corner (1968) [3]

Basidiome effused, incrusting leaves and thin twigs, fan-shaped, slightly adherent or easily separable in pieces, to erect and stalked coralloid; resupinate part 25×20 mm, up to 0.7 mm thick; erect clavarioid processes, up to 35×1-4 mm, narrowly spatulate, digitate, soft to firm.

Hymenial surface smooth, continuous, uniformly dark brown (10YR 4/2) fading toward the margin.

Subhymenium thickening up to 150 µm in the resupinate part, compact, crustose.

Trama of erect parts soft coriaceous, concolorous with the subiculum.

Subiculum thick, tomentose to fibrillose or rather soft-fibrous, very pale brown to light yellowish brown (10YR 7-6/4), paler than the fertile area.

Margin sterile or almost so, broad, up to 7 mm, abrupt, very pale brown to pale yellowish brown (10YR 7/4), paler than the fertile area and concolorous with the subiculum.

Rhizomorphs absent, but in subiculum and trama some hyphae are parallelly arranged in strands.

Hyphal system monomitic; all primary septa fibulate, simple or secondary septa sparsely present in trama and subicular hyphae.

Subicular hyphae regular (often with collapsed segments), more or less straight or with some faint constrictions at the septa, (3.5) 4–6 (7) µm wide, normally branching at some distance from clamps, thin-walled, subhyaline to pale yellowish.

Tramal hyphae like subicular ones.

Subhymenial hyphae almost all collapsed, regular, 4–6 µm, thin-walled, subhyaline to very pale yellowish brown.



Fig. 1: Basidiomes; ex holotype of *Thelephora perplexa* Burt. Bar = 5 mm [K(M) 55991]

Cystidia absent.

Basidia collapsed, about $40\text{--}60 \times 10\text{--}12\text{ }\mu\text{m}$.

Basidiospores with regular outline; lateral face ellipsoid to broadly ellipsoid; frontal face broadly ellipsoid to broadly ovoid; polar face globose to subglobose; $8\text{--}9.5\text{ (}10.3\text{)} \times 6.5\text{--}7.5 \times (6.5)\text{ }7\text{--}8\text{ }\mu\text{m}$, shortly echinulate, brownish, distinctly darker than all other elements; spore wall $0.5\text{--}0.8\text{ (}1\text{)}\text{ }\mu\text{m}$ thick. Aculei up to $0.8\text{ (}1.2\text{)}\text{ }\mu\text{m}$ long, $0.3\text{--}0.6\text{ }\mu\text{m}$ wide at the base, single, tapering. Macrospores not seen.

Chlamydospores absent.

Incrustation: none.

Chemical reactions: IKI—. CB—. KOH: subhymenium subhyaline to pale yellow, partly cyanescent assuming a light greenish-olivaceous tint.

Specimens examined

CUBA – [Unknown locality], on leaves and sticks on the ground, leg. C. Wright 238, holotype of *Thelephora perplexa* Burt (K(M) 55991)



Fig. 2: Encrusting, resupinate basidiome with clavarioid processes; ex holotype of *Thelephora perplexa* Burt. Bar = 2 mm [K(M) 55991]



Fig. 3: Clavarioid processes at the margin of the basidiome; ex holotype of *Thelephora perplexa* Burt [K(M) 55991]



Fig. 4: Basidiome toward the margin; ex holotype of *Thelephora perplexa* Burt. Bar = 2 mm [K(M) 55991]

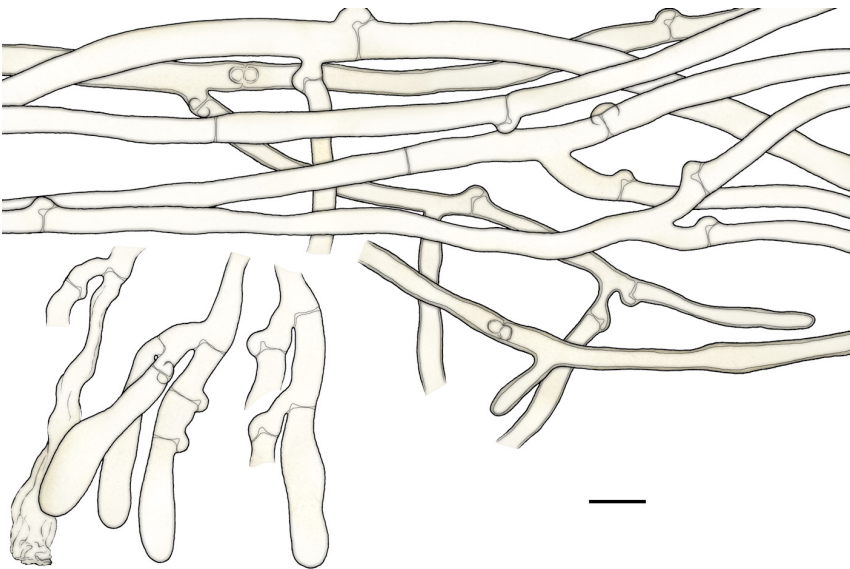


Fig. 5: Hymenial elements and hyphae; ex holotype of *Thelephora perplexa* Burt. Bar = 10 μ m [K(M) 55991]

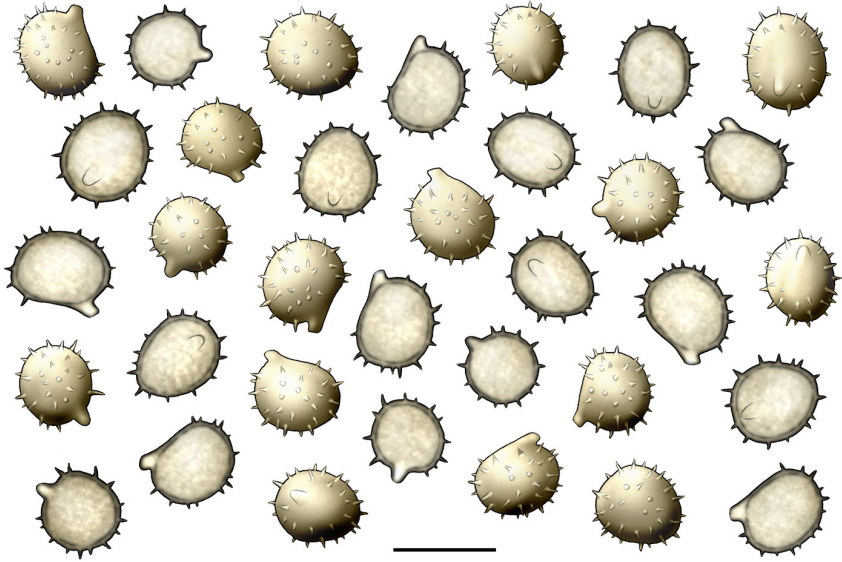


Fig. 6: Basidiospores; ex holotype of *Thelephora perplexa* Burt. Bar = 10 μ m [K(M) 55991]

Materials and methods

Specimens sampling and methodological details are described separately in this issue:

Excerpts from *Crusts & Fells*, n° 0

References

- [1] BERKELEY, M.J. AND CURTIS, M.A. (1869). 'Fungi Cubenses (Hymenomycetes) I'. *Journal of the Linnean Society. Botany*, 10 (46): 280–392. URL: <http://www.biodiversitylibrary.org/item/8361#page/286/>
- [2] BURT, E.A. (1914). 'The *Thelephoraceae* of North America I'. *Annals of the Missouri Botanical Garden*, 1 (2): 185–228. DOI: [10.2307/2989992](https://doi.org/10.2307/2989992)
- [3] CORNER, E.J.H. (1968). 'A monograph of *Thelephora*'. *Nova Hedwigia. Beiheft*, 27: 1–110



Excerpts from *Crusts & Tells*

Descriptions and reports of resupinate Aphyllophorales and Heterobasidiomycetes

Authored and published by

ELIA MARTINI
Via ai Ciòss 21
CH-6676 Bignasco
Switzerland

Email: emart@aphyllo.net
<http://www.aphyllo.net>
Orcid: 0000-0002-4709-2964



Issue № 152:

Thelephora perplexa Burt

Released on: 1st February, 2022

© E. Martini

This work is licensed under a [Creative Commons Attribution 4.0 International License](https://creativecommons.org/licenses/by/4.0/) (CC BY 4.0)

