

Thelephora crassitexta

Corner

Figures 1–7

Thelephora crassitexta Corner 1968 [1 : 51] BPI!

Basidiome effused, when dry completely separable (there is no substratum in the specimen examined and the reverse side of the fungus is rather polished), softly crustose, somewhat coriaceous or suberose, up to 5 mm thick (8 mm teste Corner [1]). In section stratified, each stratum up to 1 (2) mm; in the middle almost separable with a distinct older basidiome in the lower half.

Hymenophore smooth, continuous, yellowish (2.5Y 7–6/4), in few very small parts becoming dark greyish brown.

Subhymenium slightly thickening, not much compact and easily squashed, concolorous with the hymenial surface.

Subiculum (basal layer of each stratum) well developed, with more loosely arranged hyphae, yellowish (10YR 8/6), almost concolorous with the fertile area.

Margin indeterminable («subvillosa albida» teste Corner [1]).

Rhizomorphs (or structural strands) present at the base of the basidiome and evident on the reverse side (which is completely detached from the substratum), fan-shaped, strongly adhering to the yellowish subiculum, flattened, corneous, smooth or almost so, dark reddish brown.

Hyphal system monomitric; hyphae with fibulate primary septa; repetitive secondary septa present in unbranched segments (often long) of subicular hyphae.

Subicular hyphae regular or slightly irregular, often sinuous and in older strata often collapsed, 3–6 µm wide, with thin to thick wall, subhyaline to very pale yellowish.

Subhymenial hyphae regular to somewhat irregular, slightly sinuous, (3.5) 4–7 (8) µm wide, with thin or thickening wall, often branching from clamps, hyaline to subhyaline.

Rhizomorphs built up by compactly arranged hyphae like the subicular ones, 3–6 μm wide and agglutinated and wider gloeoplerous hyphae up to 10 μm diam filled by brownish matter, refractive in phase contrast.

Cystidia absent.

Basidia long-clavate to subcylindrical, 70–110 \times 10–13 (15) μm , hyaline to subhyaline; 4 sterigmata up to 8 (10) μm long and 2–3 μm wide at the base.

Basidiospores complex, with irregular to lobed basic shape, irregularly globose to broadly ellipsoid in frontal view; slightly elongated in side view, transversally globose to subglobose in polar view; (7.5) 8–9.5 (10) \times 5.7–7.5 \times (7) 7.5–8.5 μm , $Q^1 = 1.2\text{--}1.6$, $Q^2 = (0.9) 1\text{--}1.3$ μm , with evident tubercles, verrucae and warts often bi-trifurcate, subhyaline to very pale yellow; apiculus often difficult to find because hidden by lobes; warts 0.5–1 (1.5) \times 1.5–2.5 (3) μm ; echinuli or single aculei blunt, up to 0.5 (1) μm long and 0.3–0.9 μm wide at the base; macrospores not seen.

Chlamydospores not seen.

Incrustation: none.

Chemical reactions: IKI—. CB—. KOH—. SA—.

Specimens examined

BORNEO – Kinabalu, on bark of a twig of a deciduous tree, leg. E.J.H. Corner, 13.III.1964, isotype of *Thelephora crassitexta* Corner (BPI 267926)

Materials and methods

Specimens sampling and methodological details are described separately in this issue:

Excerpts from *Crusts & Fells*, n° 0

References

- [1] CORNER, E.J.H. (1968). 'A monograph of *Thelephora*'. *Nova Hedwigia. Beiheft*, 27: 1–110



Fig. 1: Basidiome (hymenial surface). Image width = 48 mm [BPI 267926]



Fig. 2: Basidiome (subicular side). Image width = 45 mm [BPI 267926]



Fig. 3: Vertical section through the basidiome. Image width = 8 mm [BPI 267926]

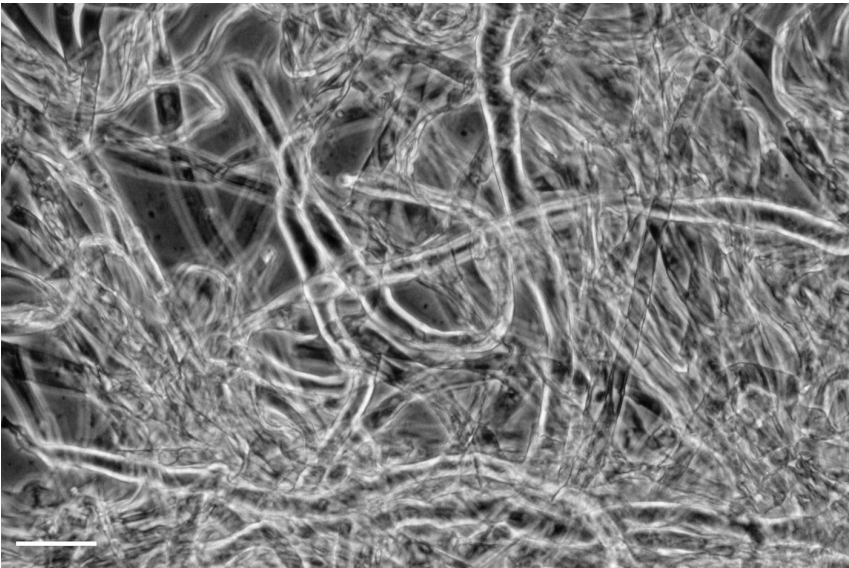


Fig. 4: Hyphae of dark brown strands on the underside of the basidiome, some of which with refractive brownish content, mounted in KOH. Bar = 20 μ m [BPI 267926]

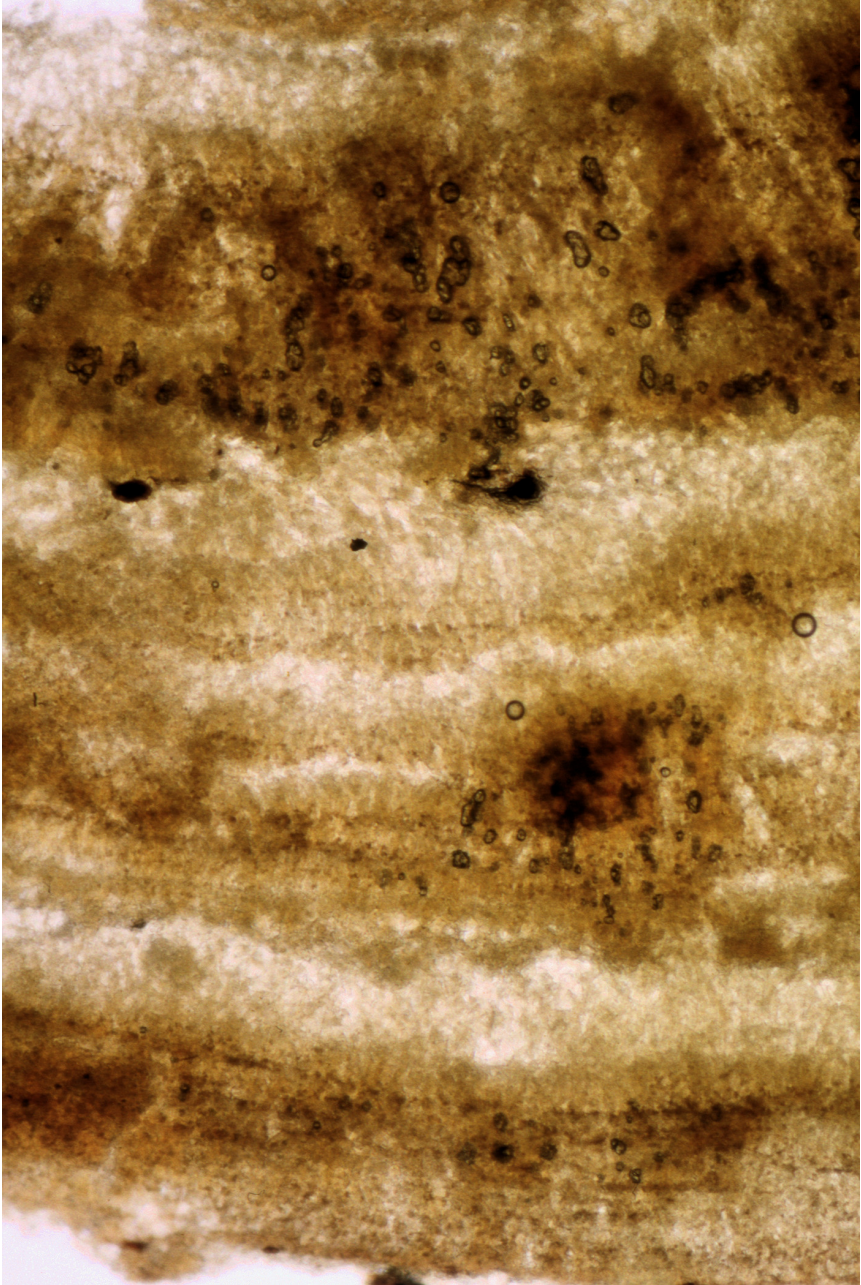


Fig. 5: Vertical section through the basidiome, mounted in KOH [BPI 267926]

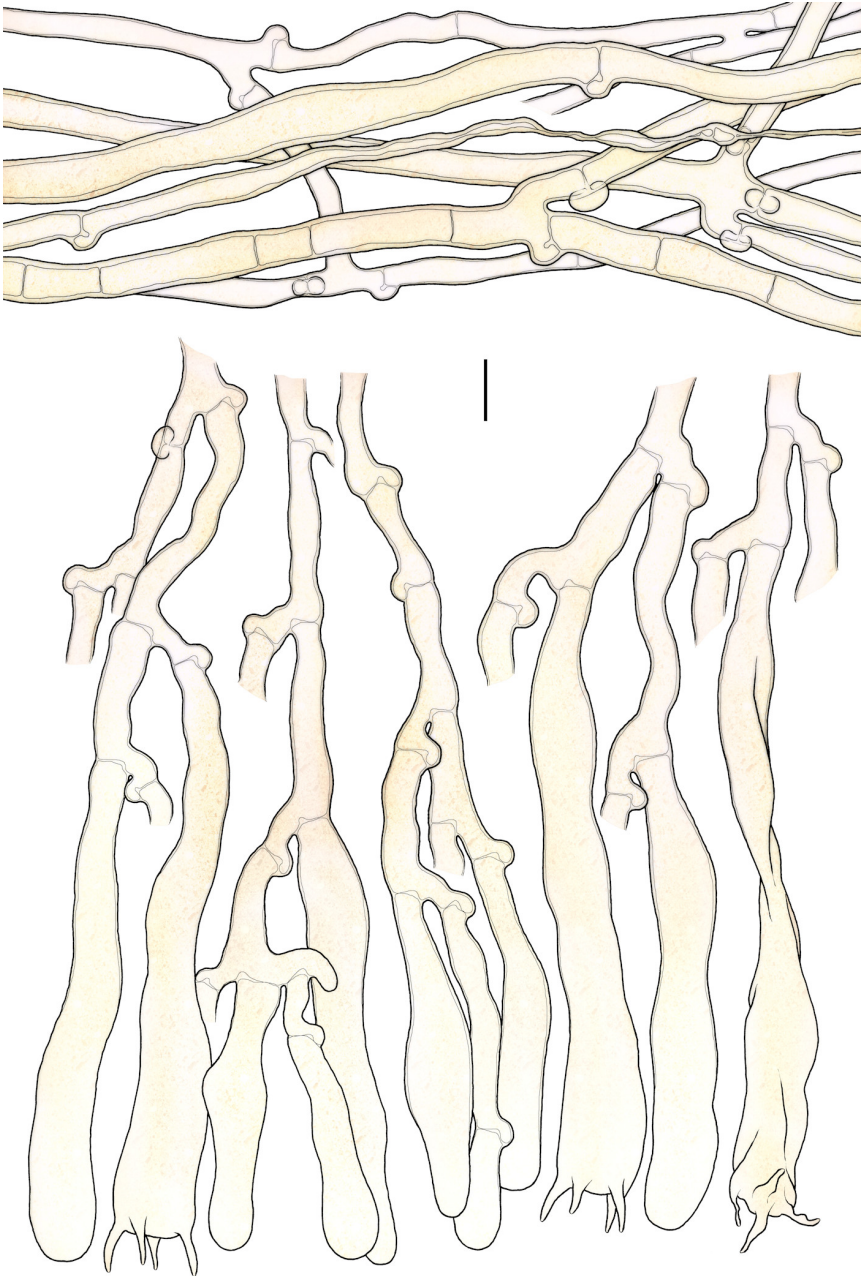


Fig. 6: Basidia, subhymenial and subicular hyphae. Bar = 10 μm [BPI 267926]

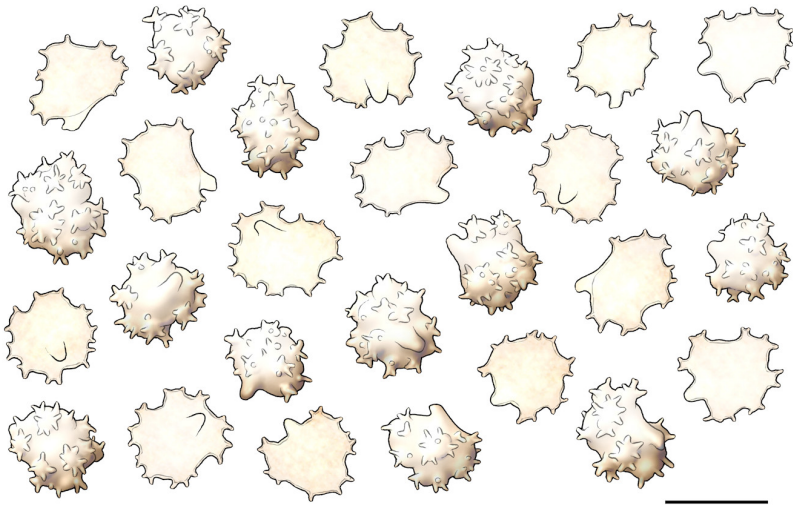


Fig. 7: Basidiospores. Bar = 10 μm [BPI 267926]



Excerpts from *Crusts & Tells*

Descriptions and reports of resupinate Aphyllophorales and Heterobasidiomycetes

Authored and published by

ELIA MARTINI
Via ai Ciòss 21
CH-6676 Bignasco
Switzerland

Email: emart@aphyllo.net
<http://www.aphyllo.net>
Orcid: 0000-0002-4709-2964



Issue № 150:

Thelephora crassitexta Corner

Released on: 1st December, 2021

© E. Martini

This work is licensed under a [Creative Commons Attribution 4.0 International License](https://creativecommons.org/licenses/by/4.0/) (CC BY 4.0)

