

*Pseudotomentella fumosa*

M.J. Larsen

Figures 1–4

*Pseudotomentella fumosa* M.J. Larsen 1983 [1 : 558] CFMR!

**Basidiome** effused, separable and often detached from substrate, byssoid, tomentose, soft, fragile when dry, up to 0.3 mm thick.

**Hymenophore** pelliculose, smooth, mostly continuous, dark yellowish brown to brownish (2.5Y–10YR 5–4/3).

**Subhymenium** thin, relatively loose.

**Subiculum** developed, hypochnoid to tomentose or soft fibrous, medium to dark greyish brown (up to 10YR 4/2), darker than the fertile area.

**Margin** indeterminable.

**Rhizomorphs** common and easily seen in subiculum, at the margin, and in cracks of the substrate, up to 0.1 (0.2) mm thick, light brown to greyish brown (10YR 5/2–7/3).

**Hyphal system** dimitic with skeletal hyphae mostly associated with rhizomorphs; generative hyphae with simple septa.

**Subicular hyphae** of two kinds: 1) generative hyphae regular, straight, often long-celled, (1.5) 2–3 (4)  $\mu\text{m}$  wide, with thin or thickening wall, normally branching at some distance from septa, sometimes with short unseptate anastomosis, subhyaline to pale yellowish; 2) some skeletal hyphae, straight or rarely slightly sinuous and with elbow-like bends, with thick to almost solid wall, yellowish to ochraceous, 1.5–2  $\mu\text{m}$  in diam.

**Subhymenial hyphae** regular, with relatively spaced septa, 2–4 (5)  $\mu\text{m}$  wide, branching close to septa, thin-walled, hyaline to pale yellowish.

**Rhizomorphs** starting as thin strands of generative hyphae like the subicular ones, soon associated with some skeletal hyphae; when well developed with a core of broad generative hyphae up to 10 (20)  $\mu\text{m}$  wide, with thin or thickening wall, subhyaline surrounded by generative 2–3  $\mu\text{m}$  almost thin-walled generative hyphae and a relatively thick layer of yellowish skeletal hyphae on the surface.

**Cystidia** absent.

**Basidia** often napiform to clavate when immature, long clavate or somewhat stalked at maturity, 40–90 (120) × (6) 7–9 (11) μm, secondary septa sometimes present, hyaline to pale yellowish; 4 sterigmata up to 6 (7) μm long and 1.5–2.5 μm wide at the base.

**Basidiospores** with lobed outline, lateral face irregularly ellipsoid to 3–4 lobed, frontal face irregular to ‘primuliform’ with 5–9 lobes or warts, polar face transversally ellipsoid with irregular to 5 lobed outline, 6.8–8.5 × 4.5–6.5 × 6.2–8 (8.8) μm, subhyaline to pale yellowish; lobes, verrucae or tubercles with scattered, indistinct, very short and blunt echinuli sometimes paired at the base.

**Chlamydospores** absent.

**Chemical reactions:** IKI–. CB– or with some skeletal hyphae more or less cyanophilous. KOH: almost none or a very slight darkening of most elements.

**Incrustation:** none noticeable.

## Specimens examined

USA — **Oregon** – Willamette National Forest, on *Pseudotsuga* sp., leg. M.J. Larsen, 16.XI.1972, holotype of *Pseudotomentella fumosa* M.J. Larsen (CFMR: FP 133500)

## Materials and methods

Specimens sampling and methodological details are described separately in this issue:  
Excerpts from *Crusts & Jells*, n° 0

## References

- [1] LARSEN, M.J. (1983). ‘Notes on tomentelloid fungi V. Additional new species of *Pseudotomentella*’. *Mycologia*, 75 (3): 556–562. DOI: [10.2307/3792699](https://doi.org/10.2307/3792699)



Fig. 1: Pieces of basidiome; ex holotype of *Pseudotomentella fumosa* M.J. Larsen [CFMR: FP 133500]

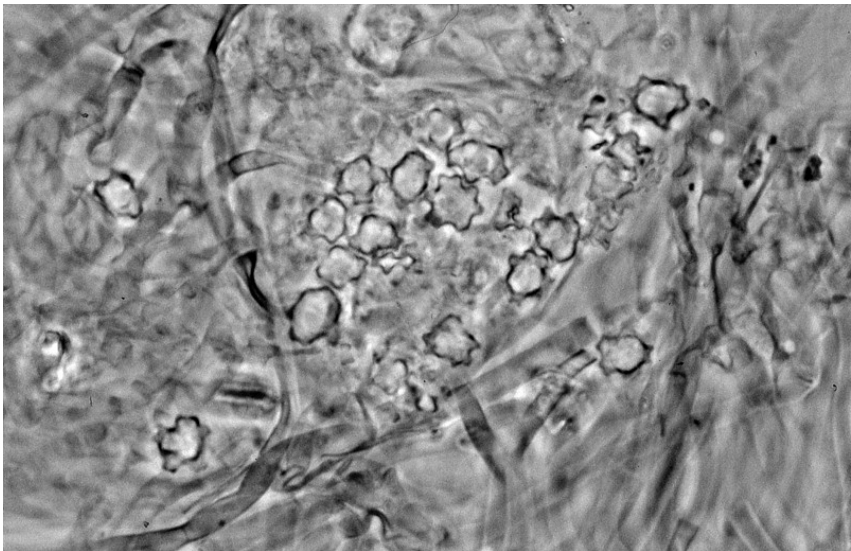


Fig. 2: Basidiospores and indistinct elements; ex holotype of *Pseudotomentella fumosa* M.J. Larsen. Bar = 10  $\mu\text{m}$  [CFMR: FP 133500]

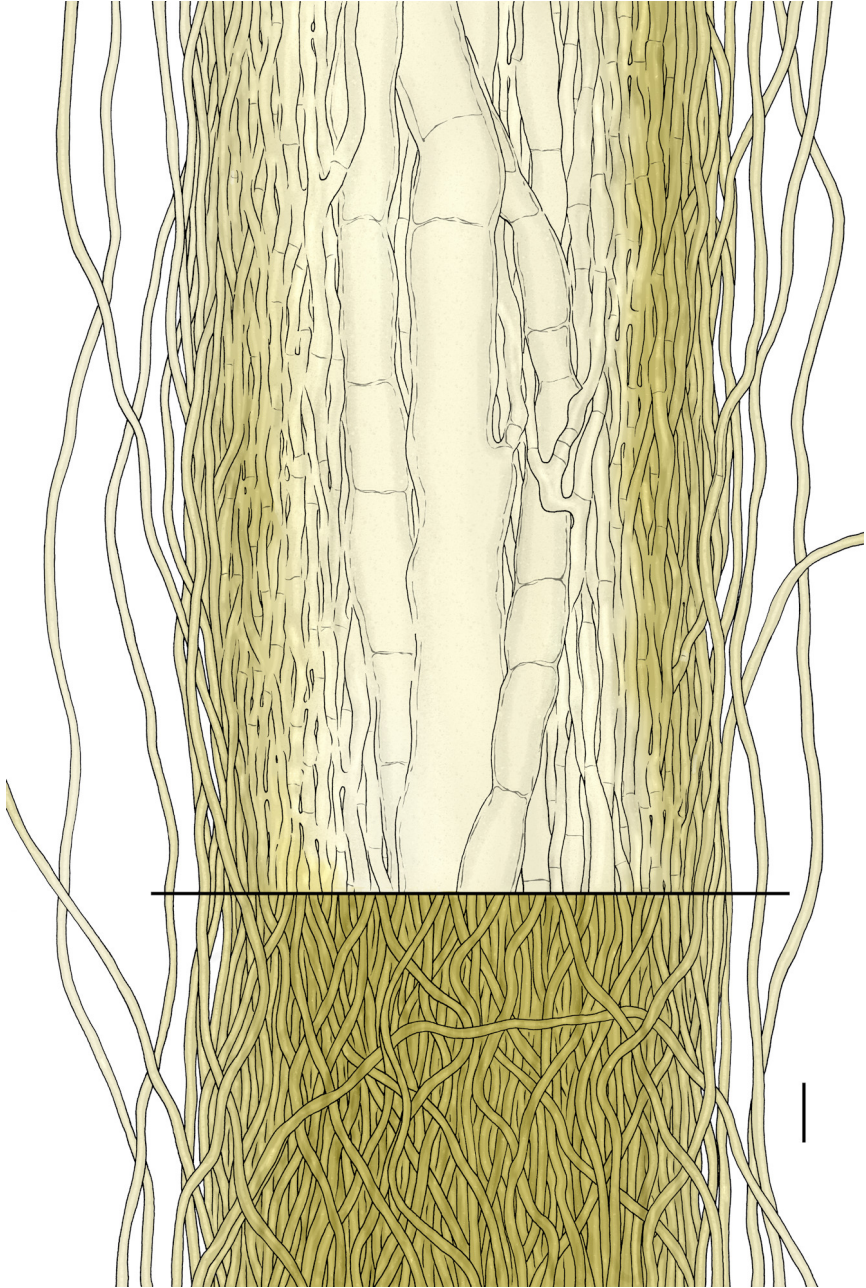


Fig. 3: Rhizomorph; ex holotype of *Pseudotomentella fumosa* M.J. Larsen. Bar = 10  $\mu\text{m}$  [CFMR: FP 133500]

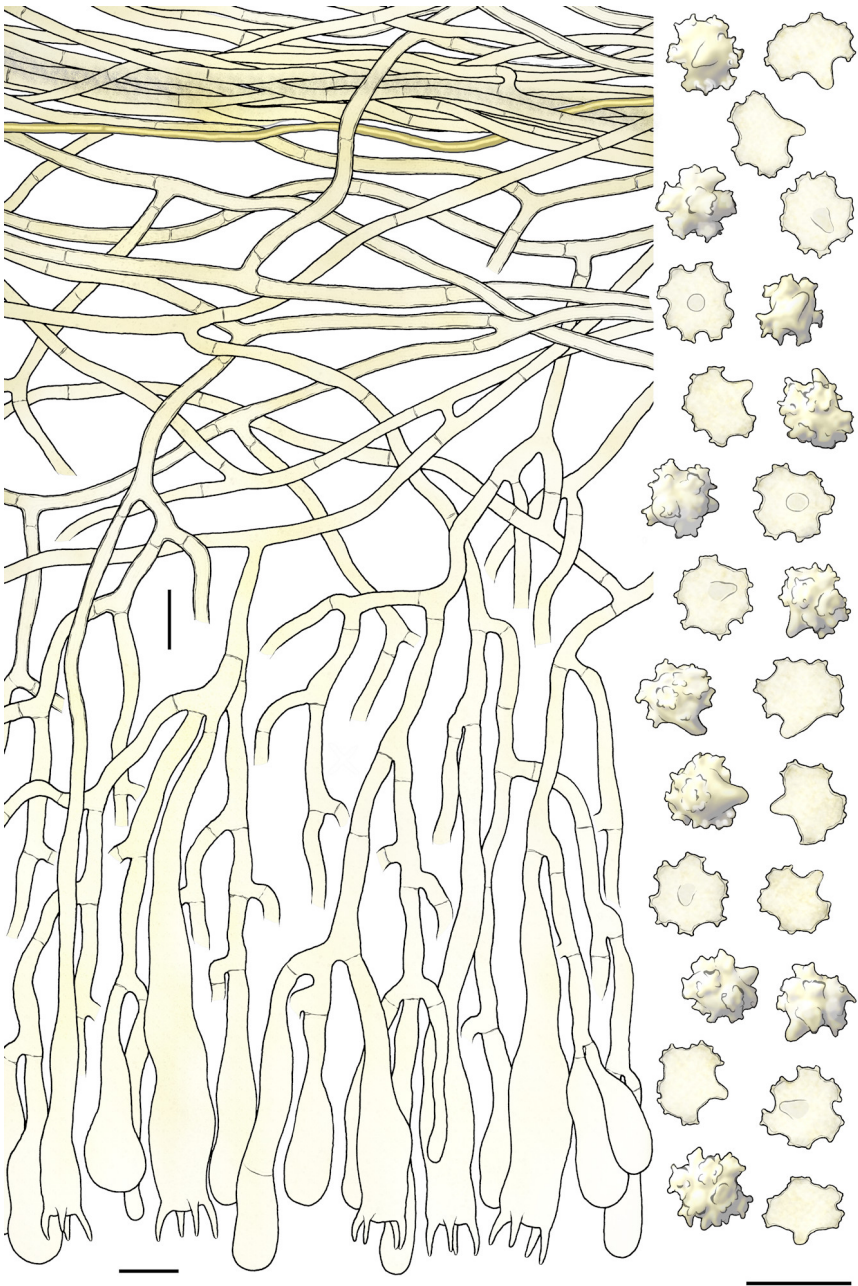


Fig. 4: Basidia, subhymenial and subicular hyphae, basidiospores; ex holotype of *Pseudotomentella fumosa* M.J. Larsen. Bar = 10  $\mu$ m [CFMR: FP 133500]



# Excerpts from *Crusts & Tells*

Descriptions and reports of resupinate Aphyllophorales and Heterobasidiomycetes

Authored and published by

ELIA MARTINI  
Via ai Ciòss 21  
CH-6676 Bignasco  
Switzerland

Email: [emart@aphyllo.net](mailto:emart@aphyllo.net)  
<http://www.aphyllo.net>  
Orcid: 0000-0002-4709-2964



Issue N° 145:

*Pseudotomentella fumosa* M.J. Larsen

Released on: 1<sup>st</sup> May, 2020

© E. Martini

This work is licensed under a [Creative Commons Attribution 4.0 International License \(CC BY 4.0\)](https://creativecommons.org/licenses/by/4.0/)

