

Pseudotomentella ochracea

Kõljalg & E. Larss.

Figures 1–4

Pseudotomentella ochracea Kõljalg & E. Larss. 1998 [1 : 54] GB!

Basidiome effused, separable, pelliculose, soft and brittle, up to 0.2 (0.3) mm thick.

Hymenial surface smooth, continuous, yellowish brown to reddish yellow, 7.5YR 6/8 (5/6), partly cracking on drying.

Subhymenium slightly thickening, up to 80 (100) μm , compact.

Subiculum developed, araneose to hypochnoid, yellowish brown to dark yellowish brown (10YR 5/4–4/4), slightly darker than the fertile surface.

Margin sterile, shortly or indefinitely thinning out, thin and araneose and concolorous with the subiculum, or fertile throughout, pruinose and concolorous with the hymenial surface.

Rhizomorphs present, easily seen in subiculum, margin and cracks of the substratum, 60 (120) μm thick, yellowish brown to brown, concolorous or slightly darker than the subiculum.

Hyphal system dimitic with skeletal hyphae mostly associated with rhizomorphs; generative hyphae mostly with fibulate primary septa.

Subicular hyphae regular; generative hyphae (2.5) 3–5 (6) μm wide, thin-walled, near the subhymenium often branching from clamps, near substratum mostly at some distance from septa, hyaline to pale yellowish, sometimes with ochre content; skeletal hyphae 1.5–2 (2.5) μm , regular, straight or sometimes slightly sinuous, with infrequent elbow-like bends, almost never branched, starting from generative fibulate hyphae, with thick to solid wall, yellowish.

Subhymenial hyphae regular, short-celled, richly branched, fibulate, (2.5) 3–5 (5.5) μm wide, thin-walled, normally branching from clamps, hyaline to pale yellowish, sometimes with light ochraceous content.

Rhizomorphs dimitic, structured with a core of broad, often sausage-shaped hyphae up to 10 (13) μm in diam., surrounded by compactly

arranged generative hyphae like subicular ones with very thin wall, and an outer layer built up by numerous skeletal hyphae.

Cystidia absent.

Basidia narrowly clavate to slightly suburniform, sinuous, never stalked, 25–40×5–7 µm, soon collapsed after spore discharge, subhyaline to yellowish, secondary septa infrequent, fibulate at the basal septum; 4 sterigmata up to 4 µm long and 0.8–1.2 µm wide at the base.

Basidiospores with somewhat irregular outline, frontal face subglobose to shortly ovoid, lateral face broadly ellipsoid, polar face transversally ellipsoid, 4.5–5.5 µm across or, more precisely, 4–5.5×3.4–4.5×4–5 (5.3) µm, echinulate to warted, subhyaline to yellowish; aculei or warts up to 1.2 (1.8) µm long, tapering to blunt or more or less cylindrical, often distinctly furcate.

Chlamydospores absent.

Chemical reactions: IKI–. CB–, but some skeletal hyphae in rhizomorphs more or less cyanophilous. KOH–.

Incrustation: absent.

Specimens examined

USA — **North Carolina** – Erno River state Park, Orange Co., on a deciduous tree, leg. E. Larsson, 2.XI.1997, holotype of *Pseudotomentella ochracea* Kõljalg & E. Larss. (GB EL99-97)

Materials and methods

Specimens sampling and methodological details are described separately in this issue:
Excerpts from *Crusts & Jells, n° 0*

References

- [1] KÕLJALG, U. AND LARSSON, E. (1998). '*Pseudotomentella ochracea* sp. nov., based on morphological and molecular data'. *Folia Cryptogamica Estonica*, 33: 53–56. URL: <http://www.ut.ee/ial5/fce/index.html>



Fig. 1: Dried basidiome; ex holotype of *Pseudotomentella ochracea* Kõljalg & E. Larss. Image width = 9 mm [GB EL99-97]

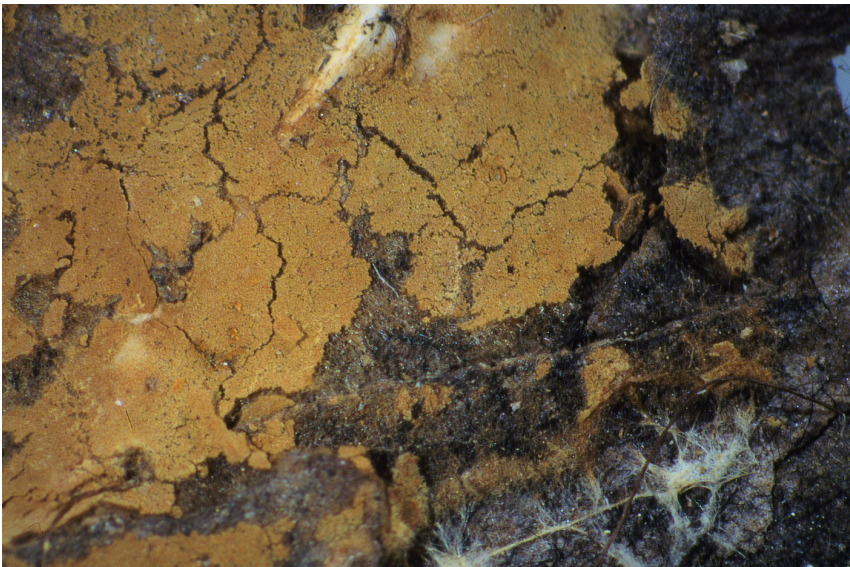


Fig. 2: Dried basidiome; ex holotype of *Pseudotomentella ochracea* Kõljalg & E. Larss. Image width = 9 mm [GB EL99-97]

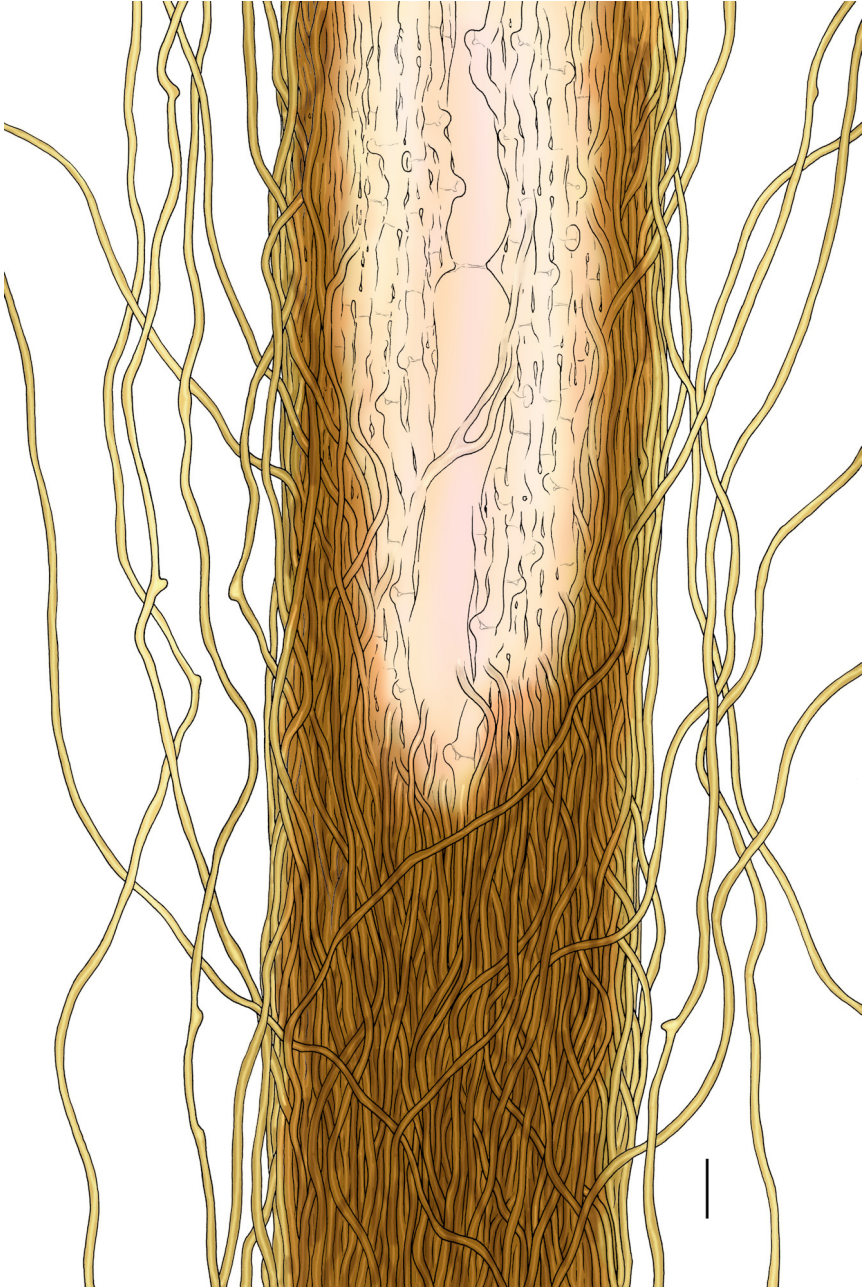


Fig. 3: Rhizomorph; ex holotype of *Pseudotomentella ochracea* Køljalg & E. Larss.
Bar = 10 μm [GB EL99-97]

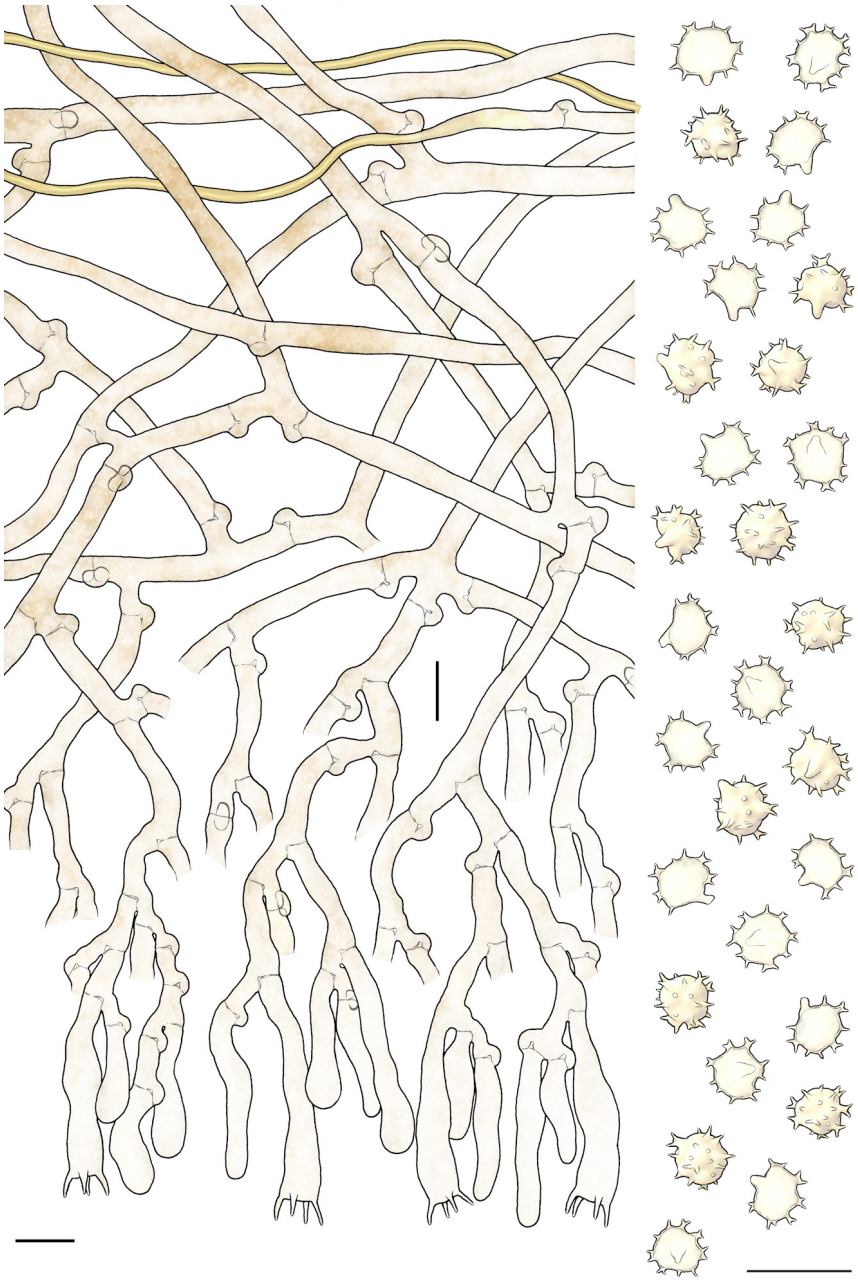


Fig. 4: Basidia, subhymenial and subicular hyphae, basidiospores; ex holotype of *Pseudotomentella ochracea* Kõljalg & E. Larss. Bar = 10 µm [GB EL99-97]



Excerpts from *Crusts & Fells*

Descriptions and reports of resupinate Aphyllophorales and Heterobasidiomycetes

Authored and published by

ELIA MARTINI
Via ai Ciöss 21
CH-6676 Bignasco
Switzerland

Email: emart@aphyllo.net
<http://www.aphyllo.net>
Orcid: 0000-0002-4709-2964



Issue № 144:

Pseudotomentella ochracea Kõljalg & E. Larss.

Released on: 1st April, 2020

© E. Martini

This work is licensed under a [Creative Commons Attribution 4.0 International License \(CC BY 4.0\)](https://creativecommons.org/licenses/by/4.0/)

