

Tomentella atrorubra (Peck) Bourdot & Galzin

Figures 1–4

Zygodesmus atroruber Peck 1881 [6 : 277] NYS! \equiv *Hypochnus atroruber* (Peck) Burt 1916 [2 : 230] \equiv *Tomentella atrorubra* (Peck) Bourdot & Galzin 1924 [1 : 134]

Basidiome effused, hypochnoid, soft, separable from the substrate, up to 0.3 mm thick.

Hymenium porulose, tufted, discontinuous, ferrugineous (no well developed surface seen), 'dull reddish purple' teste Larsen [5], 'near Fawn or Dark Brick' teste Kõljalg [3], 'dark red' and 'dark vinous-red' teste Peck [6].

Subiculum well developed, becoming rather thick, loose, ochre brown to reddish brown, ferrugineous (5–7.5YR 4–3/4).

Rhizomorphs present in subiculum, infrequent, up to 70 μ m thick, ochre brown to strong brown or reddish brown, more or less concolorous with the subiculum.

Hyphal system monomitic.

Subhymenial hyphae regular, fibulate, 4–5 μ m wide, subhyaline to pale yellowish.

Subicular hyphae regular, fibulate, 4–8 μ m wide, with thickening or thick wall, yellowish to ochre brown.

Rhizomorphs build up by hyphae like the subicular ones, regular, mostly fibulate, with some sparse simple septa, 6–8 (10) μ m in diam., with thickening or thick wall up to 1.5 (2) μ m, yellowish to ochre brown.

Cystidia absent.

Basidia clavate, almost capitate, sinuous, subhyaline to pale yellowish, 50–60 \times 8–9 μ m; 4 sterigmata up to 6 μ m long and 1.5–2 μ m wide at the base.

Basidiospores with somewhat irregular to lobed outline, frontal face



Fig. 1: Basidiome, ex holotype of *Zygodesmus atroruber* Peck. Image width = 9 mm [NYS]

pyriform, 3-lobed, lateral face obliquely ovoid or 2-lobed obliquely pyriform, with a flattening adaxial side and broader base, polar face mostly irregularly globose, $6.8\text{--}8.8 \times 5\text{--}6.5 \times 6.5\text{--}8\text{ }\mu\text{m}$, echinulate to aculeate, subhyaline to light yellowish brown, lighter than the subicular hyphae, normally with a large guttula; aculei $1\text{--}1.8\text{ }\mu\text{m}$ long, single to rarely crescent.

Chlamydospores absent.

Chemical reactions: IKI–. CB–. KOH: all elements assuming a slightly more brownish tint.

Incrustation: hyphae in subiculum and rhizomorphs often very finely encrusted in water mounts by small granular, subhyaline to yellow, orange, red or reddish brown crystals, almost smooth or with some sparse granules in KOH mounts.

Specimens examined

USA — Massachusetts — Mt. Tom, on *Populus sp.*, leg. Harkness, holotype of *Zygodesmus atroruber* Peck (NYS)

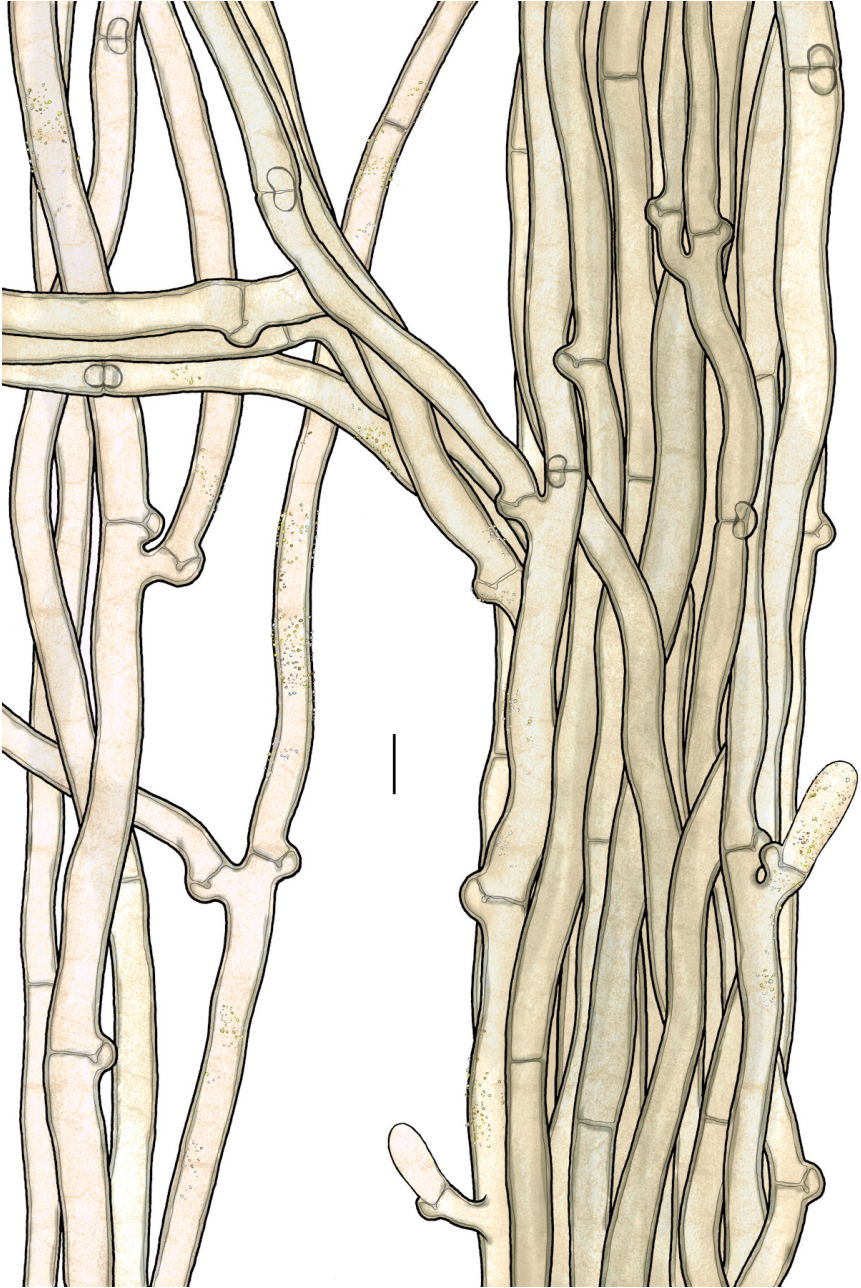


Fig. 2: Rhizomorphs, ex holotype of *Zygodermus atroruber* Peck. Bar = 10 μ m
[NYS]

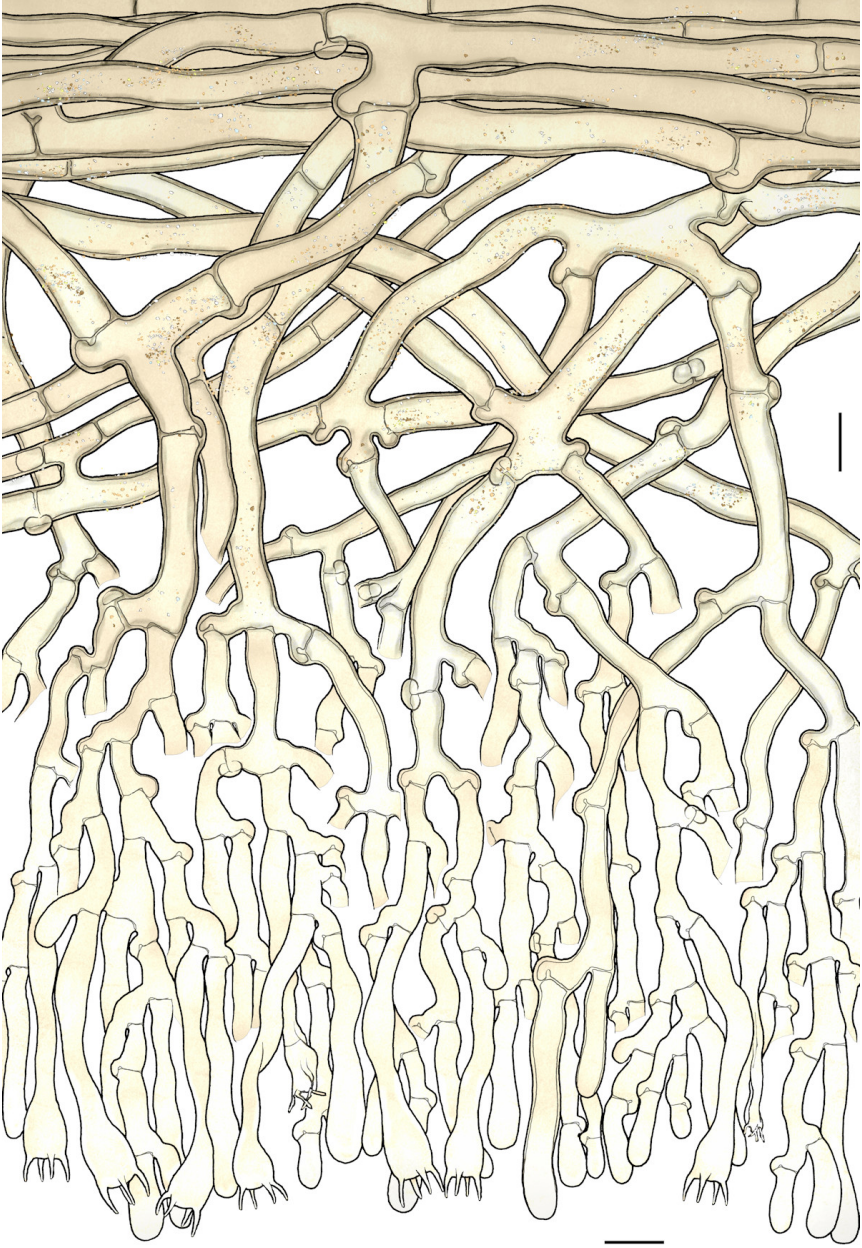


Fig. 3: Simplified section through the basidiome, ex holotype of *Zygodermus atroruber* Peck. Bar = 10 μ m [NYS]

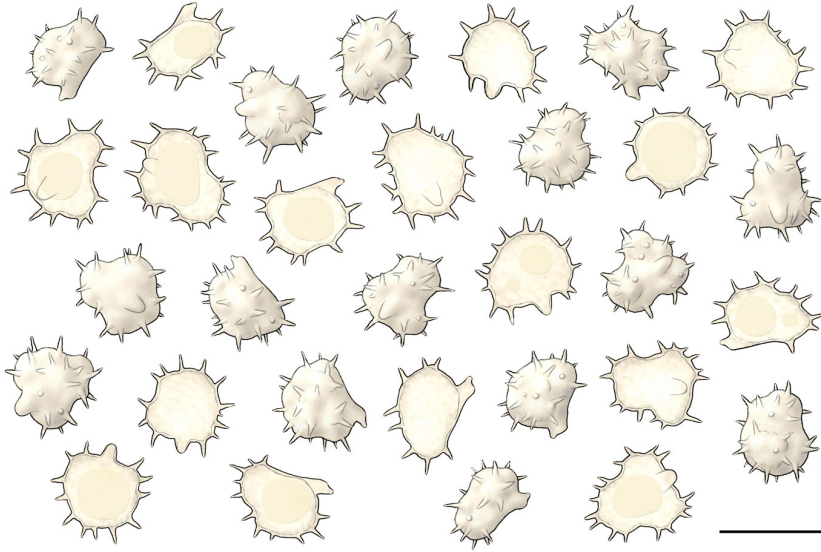


Fig. 4: Basidiospores, ex holotype of *Zygodesmus atroruber* Peck. Bar = 10 μ m [NYS]

References

- [1] BOURDOT, H. AND GALZIN, A. (1924). 'Hyménomycètes de France. X. Phylactériés'. *Bulletin de la Société Mycologique de France*, 40 (1-2): 105–162
- [2] BURT, E.A. (1916). 'The *Thelephoraceae* of North America VI. *Hypochnus*'. *Annals of the Missouri Botanical Garden*, 3 (2): 203–241. DOI: <http://dx.doi.org/10.2307/2989976>. URL: <http://www.biodiversitylibrary.org/item/21978#page/203/mode/1up>
- [3] KÖLJALG, U. (1996). '*Tomentella* (Basidiomycota) and related genera in Temperate Eurasia'. *Synopsis Fungorum*, 9: 1–213
- [4] LARSEN, M.J. (1966). '*Tomentella* and related genera in North America II. Studies of nomenclatural types of species described by Peck'. *Mycologia*, 58 (4): 597–613. DOI: <http://dx.doi.org/10.2307/3757040>. URL: <http://www.cybertruffle.org.uk/cyberliber/59350/index.htm>
- [5] LARSEN, M.J. (1974). 'A contribution to the taxonomy of the genus *Tomentella*'. *Mycologia Memoirs*, 4: 1–145
- [6] PECK, C.H. (1881). 'New species of fungi'. *Botanical Gazette*, 6 (10): 274–279. URL: <http://www.jstor.org/stable/2994926>



Excerpts from *Crusts & Tells*

Descriptions and reports of resupinate Aphyllophorales and Heterobasidiomycetes

Authored and published by

ELIA MARTINI
Via ai Ciòss 21
CH-6676 Bignasco
Switzerland

Email: emart@aphyllo.net
<http://www.aphyllo.net>
Orcid: 0000-0002-4709-2964



Issue № 141:

Tomentella atrorubra (Peck) Bourdot & Galzin

Released on: 1st September, 2019

© E. Martini

This work is licensed under a [Creative Commons Attribution 4.0 International License](https://creativecommons.org/licenses/by/4.0/) (CC BY 4.0)

