

Pseudotomentella molybdaea

M.J. Larsen

Figures 1–6

Pseudotomentella molybdaea M.J. Larsen 1983 [1 : 556] CFMR!

Basidiome effused, separable, pelliculose and sometimes detached from the substrate, soft and brittle, up to 0.2 (0.4) mm thick.

Hymenial surface present as irregular, discontinuous patches over a diffuse subiculum, smooth, continuous when developed, light grey (10YR 7/2 or slightly more greyish), not cracked, detachable from the subiculum.

Subhymenium thin, up to 0.1 mm, not much compact, fragile.

Subiculum developed, araneose to hypochnoid or soft fibrous, greyish (10YR 6–5/1), slightly to distinctly darker than the hymenial surface.

Margin sterile or almost so, shortly thinning out, tomentose, concolorous with the subiculum.

Rhizomorphs common and easily seen in subiculum, at the margin, and in cracks of the substrate, up to 0.1 mm thick, richly branched, pubescent for the emerging skeletal hyphae or smooth and then somewhat silky, flexible, yellowish brown to brownish (10YR 6/2–3, 5/3).

Hyphal system dimitic with skeletal hyphae associated with rhizomorphs; generative hyphae with simple septa.

Subhymenial hyphae regular, relatively long-celled, 2–3 µm wide, sometimes slightly broader at the ramifications, thin-walled, hyaline.

Subicular hyphae regular, 1.5–2 (2.5) µm wide, with thin to slightly thickening wall, sometimes with simple anastomosis, subhyaline to pale yellowish.

Rhizomorphs starting as thin strands of generative hyphae like the subicular ones, then becoming structured with a core of wider generative hyphae often sausage-shaped, up to 8 (12) µm in diam., hyaline or almost so, surrounded by regular and compactly arranged generative hyphae 1–2 (3) µm wide, hyaline, and an outer layer built up by a thin to thick stratum of skeletal hyphae, regular, straight, with thick to solid wall, (1.5) 2 (2.5)

µm in diam., light yellowish brown to light brown.

Cystidia absent.

Basidia cylindrical to slightly ventricose, distinctly stalked, 45–70×(7) 8–10 µm, hyaline or almost so; 4 sterigmata up to 5 (7) µm long and 1.2–2 µm wide at the base.

Basidiospores with almost regular outline, lateral face ellipsoid, frontal face subglobose, polar face transversally ellipsoid, 6.5–8 (8.5)×5–6×6.5–7.5 µm, thin-walled, hyaline or subhyaline, with bi- or trifurcate small tubercles, often with single or paired aculei or cylindrical spines with forked apex, up to 1.5 (2) µm long.

Chlamydospores absent.

Chemical reactions: IKI –. KOH –. CB– or with some skeletal hyphae in rhizomorphs doubtfully cyanophilous.

Incrustation: some sparse small bluish or greyish blue irregular granules on subhymenial elements and subicular hyphae visible in water, dissolving and resulting in a slightly greenish diffusate in KOH.

Specimens examined

USA — Montana – Coram Experimental Forest, Hungry Horse, Flathead, on lying, strongly decayed wood of *Pseudotsuga menziesii*, leg. M.J. Larsen, 6.IX.1974, holotype of *Pseudotomentella molybdaea* M.J. Larsen (CFMR FP 133840)

Materials and methods

Specimens sampling and methodological details are described separately in this issue:
Excerpts from *Crusts & Jells*, n° 0

References

- [1] LARSEN, M.J. (1983). ‘Notes on tomentelloid fungi V. Additional new species of *Pseudotomentella*’. *Mycologia*, 75 (3): 556–562. DOI: <http://dx.doi.org/10.2307/3792699>. URL: <http://www.cybertruffle.org.uk/cyberliber/59350/index.htm>



Fig. 1: Basidiome, ex holotype of *Pseudotomentella molybdaea* M.J. Larsen [CFMR FP 133840]



Fig. 2: Basidiome, ex holotype of *Pseudotomentella molybdaea* M.J. Larsen. Image width = 9 mm [CFMR FP 133840]

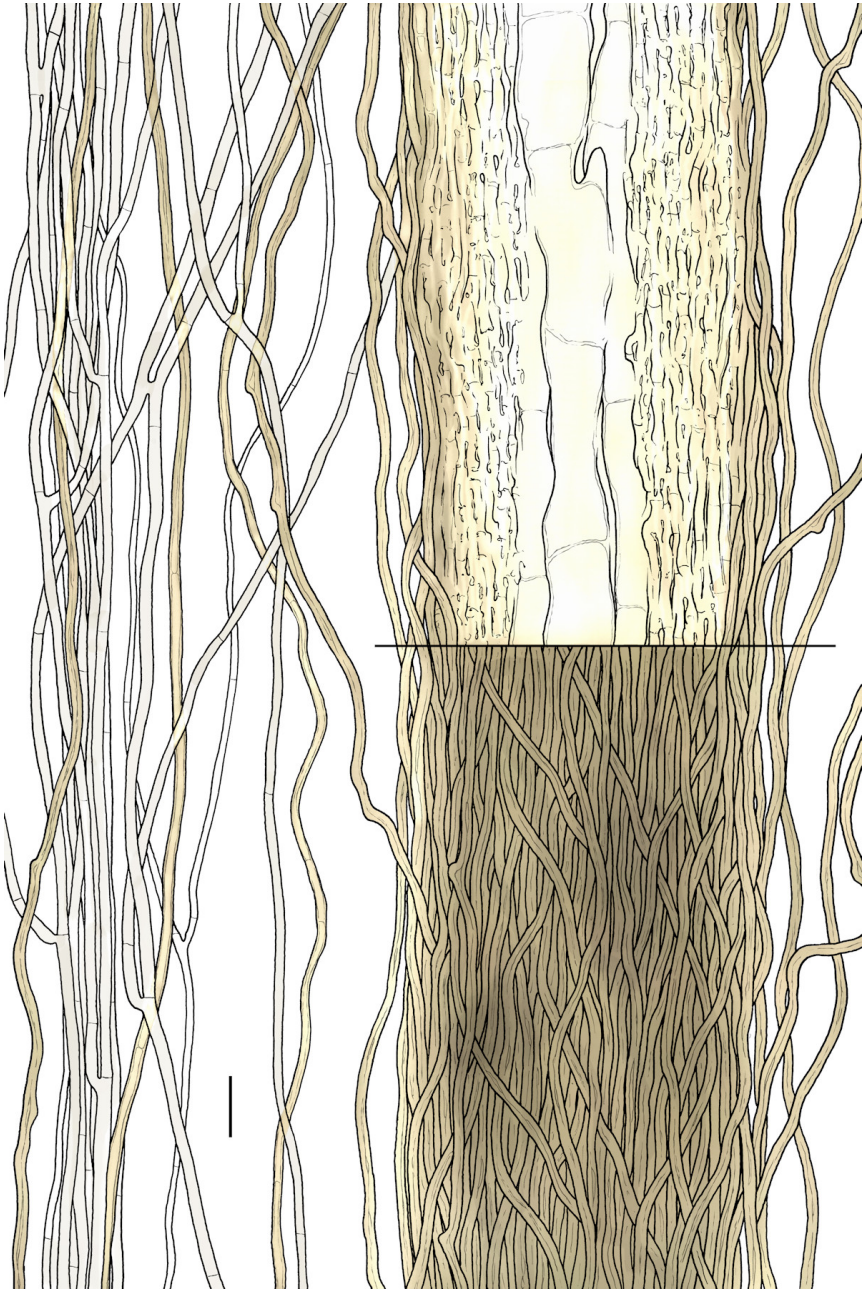


Fig. 3: Rhizomorphs, ex holotype of *Pseudotomentella molybdaea* M.J. Larsen. Bar = 10 μm [CFMR FP 133840]



Fig. 4: Basidia, subhymenial and subicular hyphae. Bar = 10 μ m [CFMR FP 133840]

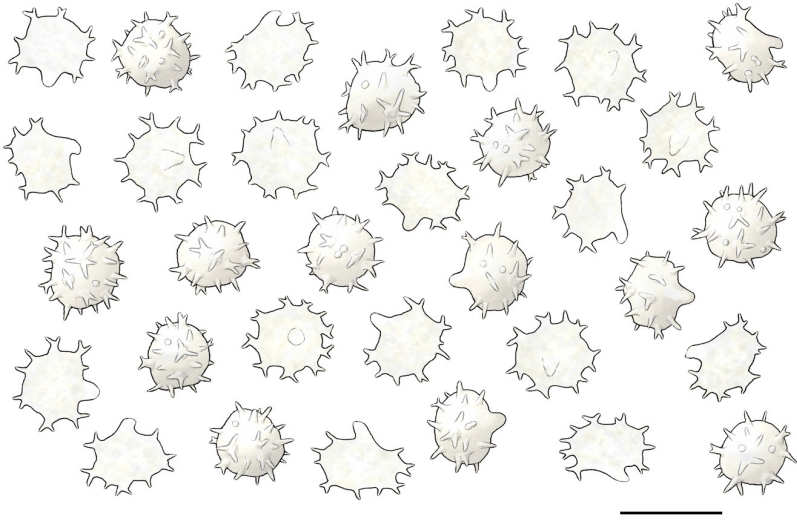


Fig. 5: Basidiospores, ex holotype of *Pseudotomentella molybdaea* M.J. Larsen. Bar = 10 μm [CFMR FP 133840]

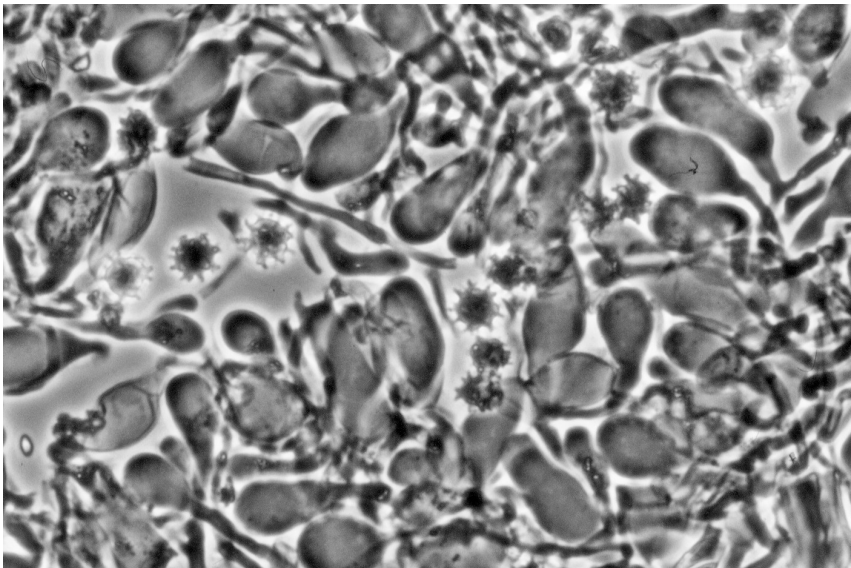


Fig. 6: Basidiospores and hymenial elements, ex holotype of *Pseudotomentella molybdaea* M.J. Larsen [CFMR FP 133840]



Excerpts from *Crusts & Tells*

Descriptions and reports of resupinate Aphyllophorales and Heterobasidiomycetes

Authored and published by

ELIA MARTINI
Via ai Ciòss 21
CH-6676 Bignasco
Switzerland

Email: emart@aphyllo.net
<http://www.aphyllo.net>
Orcid: 0000-0002-4709-2964



Issue N° 140:

Pseudotomentella molybdaea M.J. Larsen

Released on: 1st August, 2019

© E. Martini

This work is licensed under a [Creative Commons Attribution 4.0 International License \(CC BY 4.0\)](https://creativecommons.org/licenses/by/4.0/)

