

## № 121

*Odontia aurantiaca*

(Pat.) E.C. Martini

Figures 1–4

*Tomentella aurantiaca* Pat. 1908 [4 : 3] FH!  $\equiv$  *Hypochnus aurantiacus* (Pat.) Burt 1916 [1 : 241]  $\equiv$  *Odontia aurantiaca* (Pat.) E.C. Martini 2018 [3 : 1]

**Basidiome** effused, up to 0.1–0.2 mm thick, separable, here and there almost completely detached from the substrate, araneose, byssoid to pelliculose, brittle.

**Hymenial surface** porulose, discontinuous, dull reddish yellow to strong brown (7.5YR 5/6–8).

**Subiculum** poorly developed, araneose to hypochnoid, concolorous with the hymenial surface.

**Margin** fertile throughout, abrupt or indefinitely thinning out, pruinose to byssoid, concolorous with the subiculum.

**Rhizomorphs** present, common and easily seen in subiculum and at the margin, up to 0.05 (0.1) mm thick, compact, flexible, with almost smooth surface, dull yellow to strong brown.

**Hyphal system** dimitic with skeletal hyphae associated with rhizomorphs.

**Subhymenial hyphae** regular, fibulate, 2.5–4  $\mu$ m in diam., thin-walled, subhyaline to pale yellowish.

**Subicular hyphae** mostly fibulate but often also with long simple-septate segments, 2–3.5  $\mu$ m diam., subhyaline to pale yellowish, regular, thin-walled.

**Rhizomorphs** starting as thin strands of generative hyphae like the subicular ones, then becoming structured with a core of slightly wider generative hyphae up to 6  $\mu$ m in diam. with inconstant clamps, surrounded by fibulate and unclamped generative hyphae 2–4  $\mu$ m in diam, subhyaline to pale yellowish and a surface layer of compactly arranged straight skeletal hyphae (1) 1.5 (2)  $\mu$ m wide, light yellow.

**Cystidia** absent.

**Basidia** clavate to somewhat stalked, often with 1–3 secondary septa, 25–30×6–7.5 µm, fibulate at the basal septum, subhyaline to pale yellowish; 4 sterigmata up to 4 µm long and 0.5–1 µm wide at the base.

**Basidiospores** with strongly lobed outline, frontal face with 3 to 5 primary lobes, lateral face almost impossible to determine because the apiculus is hidden under lobes, (5) 5.5–6.5 (7) µm in diam., verrucose, subhyaline to yellowish or light yellowish brown. Aculei infrequent, up to 0.3 (0.5) µm long, blunt, single, growing on secondary lobes that often appear as bi- or tri-furcated.

**Chlamydospores** absent.

**Chemical reactions:** IKI–. KOH: hyphae only slightly more dull.

**Incrustation:** almost none; some sparse hyaline crystals or some resinous yellowish matter on hyphae.

## Specimens examined

GUADELOUPE – Camp-Jacob, on decayed bark, leg. N. Patouillard 764, IV.1903, holotype of *Tomentella aurantiaca* Pat. (FH: Patouillard herb. sheet 3604)

## Materials and methods

Specimens sampling and methodological details are described separately in this issue: Excerpts from *Crusts & Fells*, n° 0

## References

- [1] BURT, E.A. (1916). ‘The *Thelephoraceae* of North America VI. *Hypochnus*’. *Annals of the Missouri Botanical Garden*, 3 (2): 203–241. DOI: <http://dx.doi.org/10.2307/2989976>. URL: <http://www.biodiversitylibrary.org/item/21978#page/203/mode/1up>
- [2] LARSEN, M.J. (1974). ‘A contribution to the taxonomy of the genus *Tomentella*’. *Mycologia Memoirs*, 4: 1–145
- [3] MARTINI, E. (2018). ‘*Odontia aurantiaca* (Pat.) E.C. Martini, comb. nov.’ *Index Fungorum*, ( 350): 1. URL: <http://www.indexfungorum.org/Publications/Index%20Fungorum%20no.350.pdf>
- [4] PATOULLARD, N.T. (1908). ‘Champignons nouveaux ou peu connus’. *Bulletin de la Société Mycologique de France*, 24: 1–12. URL: <http://www.biodiversitylibrary.org/item/106614#page/47/>

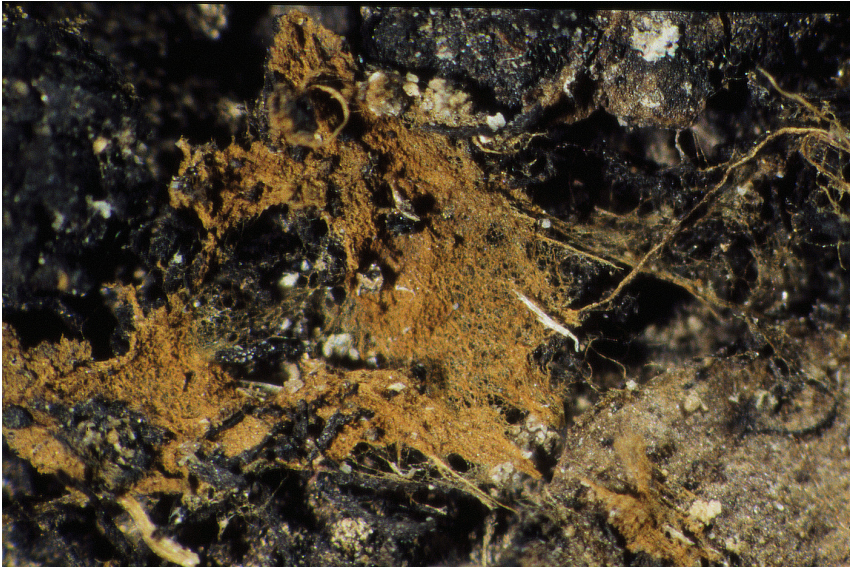


Fig. 1: Dried basidiome. Image width = 9 mm [FH: Patouillard herb. sheet 3604]

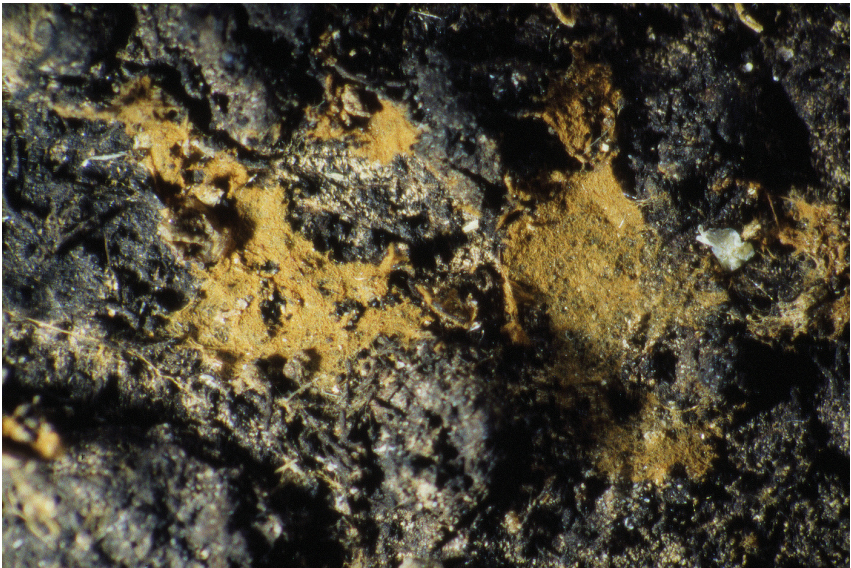


Fig. 2: Dried basidiome. Image width = 9 mm [FH: Patouillard herb. sheet 3604]

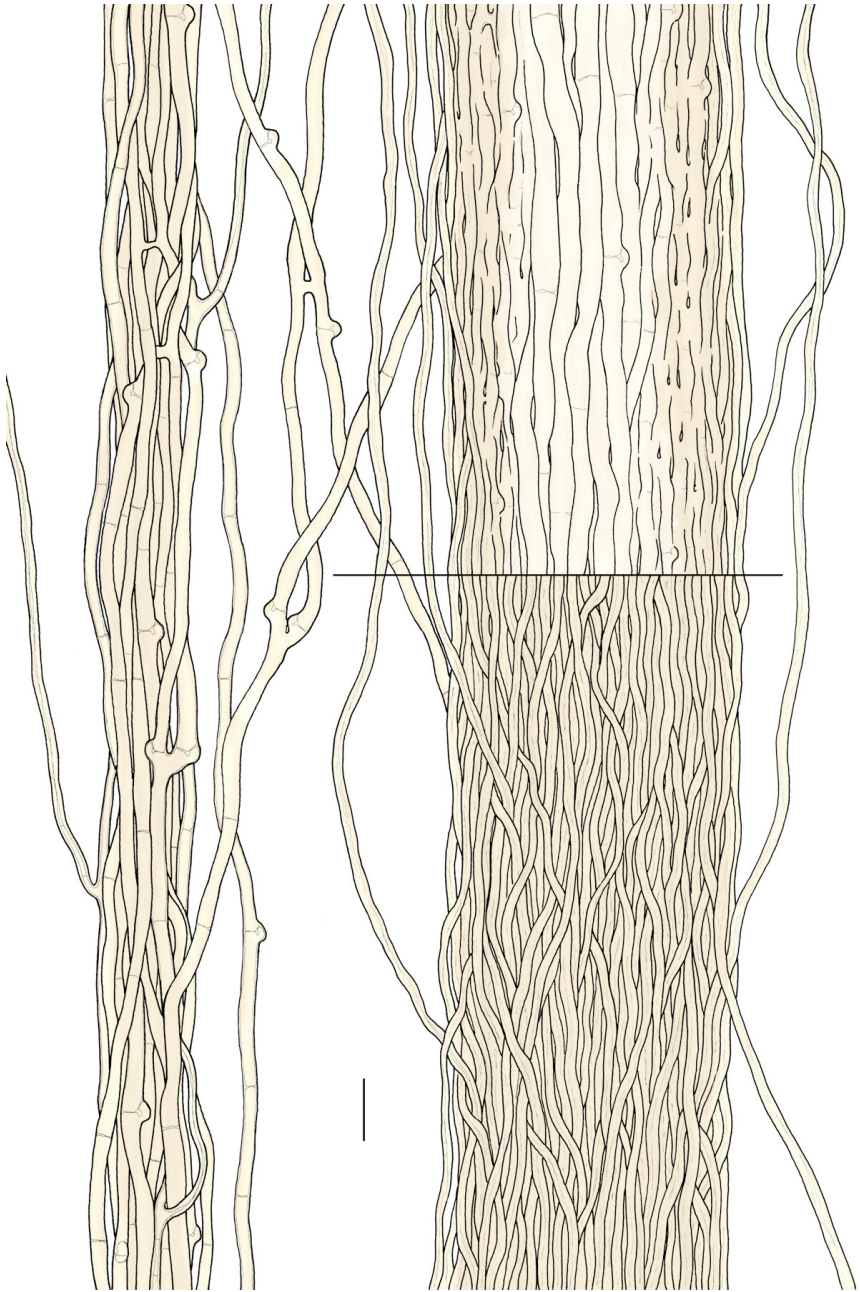


Fig. 3: Rhizomorphs. Bar = 10  $\mu\text{m}$  [FH: Patouillard herb. sheet 3604]

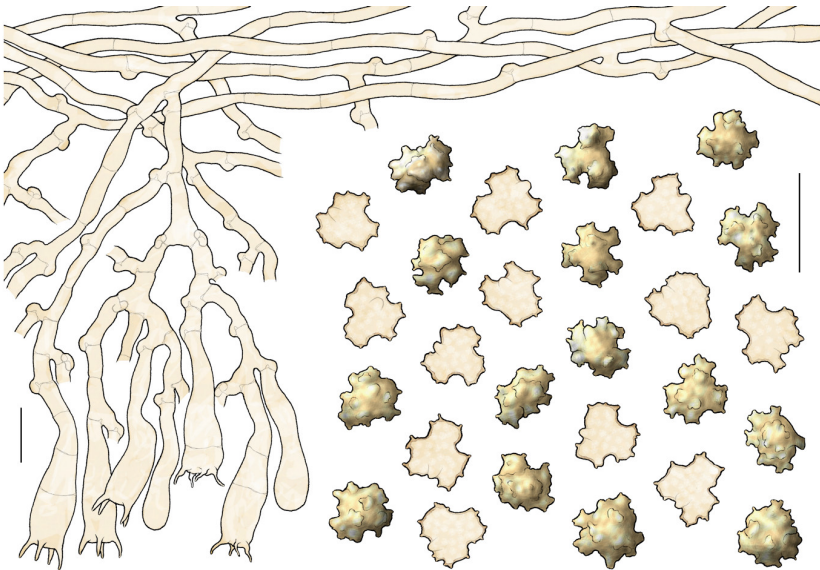


Fig. 4: Basidia, subhymenial and basal hyphae, basidiospores [FH: Patouillard herb. sheet 3604]



# Excerpts from *Crusts & Fells*

Descriptions and reports of resupinate Aphyllophorales and Heterobasidiomycetes

Authored and published by

ELIA MARTINI  
Via ai Ciòss 21  
CH-6676 Bignasco  
Switzerland

Email: [emart@aphyllo.net](mailto:emart@aphyllo.net)  
<http://www.aphyllo.net>  
Orcid: 0000-0002-4709-2964



Issue N° 121:

*Odontia aurantiaca* (Pat.) E.C. Martini

Released on: 1<sup>st</sup> February, 2018

© E. Martini

This work is licensed under a [Creative Commons Attribution 4.0 International License \(CC BY 4.0\)](https://creativecommons.org/licenses/by/4.0/)

