

№ 119

Tomentella griseoviolacea

Litsch.

Figures 1–6

Tomentella griseoviolacea Litsch. 1939 [3 : 20] PRM!

Basidiome effused, separable, arachnoid to byssoid, hypochnoid, fragile, up to 0.2 mm thick.

Hymenial surface discontinuous to continuous, smooth to finely granulose, greenish grey to dark olive grey (5Y 4/2), with bistre parts (5Y 3/1).

Subiculum tomentose to soft fibrous, more or less concolorous with the hymenial surface.

Margin not differentiated and concolorous with the hymenial surface or becoming sterile, thinning out, arachnoid to byssoid, paler, light olivaceous grey (5Y 6/2).

Rhizomorphs common in subiculum and in cracks of the substratum, obscure at the margin, up to 0.1 (0.2) mm thick, rigid, flexible, richly branched, brownish to dark greenish brown.

Hyphal system dimitic with skeletal hyphae associated with rhizomorphs; generative hyphae mostly fibulate.

Subhymenial hyphae regular, fibulate, (1.5) 2–4 μm in diam., often branched from clamps, thin-walled, hyaline to subhyaline.

Subicular hyphae regular, mostly fibulate, sometimes with intercalary simple septa, 2–4 (5) μm wide, with thin or slightly thickening wall, very pale to pale brown.

Rhizomorphs starting as thin strands of thin-walled generative hyphae like the subicular ones, soon associated with some straight (rarely with some elbow-like bends), 1–1.5 (2) μm wide skeletal hyphae with thick to solid walls; when well developed becoming structured with a core of slightly wider hyphae up to 6 μm in diam., and numerous skeletal hyphae on surface.

Cystidia absent.

Basidia irregularly subcylindrical or narrowly clavate to slightly sub-urniform, sinuous, (35) 40–60×7–9 μm , often with yellowish olivaceous content, fibulate at the basal septum; 4 sterigmata up to 5 (7) μm long and 1–1.5 wide at the base.

Basidiospores with mostly irregular to distinctly lobed outline; lateral face irregularly ellipsoid to 3-lobed, with a flattening adaxial side, rarely with slightly broader base; frontal face with sinuous outline to distinctly 3-lobed; polar face subglobose to 3-lobed, (6.5) 7–8.5 (9)×(5) 5.5–6.5 (7) ×(6) 6.5–8 (8.5) μm , $Q^1 = 1.25\text{--}1.5$, $Q^2 = 0.95\text{--}1.15$, echinulate, thick-walled, pale brown; aculei up to 0.8 (1.2) μm long, single, sparse, rarely disposed in crowns over primary or not well defined secondary lobes.

Chlamydospores absent.

Chemical reactions: IKI–. KOH: basidial content and adhering matter turning greyish green; generative and skeletal hyphae assuming a greyish-green coloration that may become darker in parts or spots.

Incrustation: subicular and rhizomorphal generative hyphae strongly and finely encrusted by subhyaline to light ochre crystalline matter that doesn't dissolve with KOH.

Specimens examined

MACEDONIA – Ljuboten (Šar Mountains), on *Fagus sylvatica*, leg. Pilat et Lindtner, VII.1937, holotype of *Tomentella griseoviolacea* Litsch. (PRM 490662)

Materials and methods

Specimens sampling and methodological details are described separately in this issue:
Excerpts from *Crusts & Fells*, n° 0

References

- [1] LARSEN, M.J. (1970). 'Tomentella and related genera in North America VI. Some synonymy and additional new records'. *Mycologia*, 62 (2): 256–271. DOI: <http://dx.doi.org/10.2307/3757584>. URL: <http://www.cybertruffle.org.uk/cyberliber/59350/index.htm>
- [2] LARSEN, M.J. (1974). 'A contribution to the taxonomy of the genus *Tomentella*'. *Mycologia Memoirs*, 4: 1–145
- [3] LITSCHAUER, V. (1939). 'Beitrag zur Kenntnis der resupinaten Phylacteriaceen von Südserbien'. *Bulletin de la Société Scientifique de Skoplje, Sect. Sciences Naturelles = Glasnik Skopskog naučnog društva, Skopsko naučno društvo*, 7: 13–22

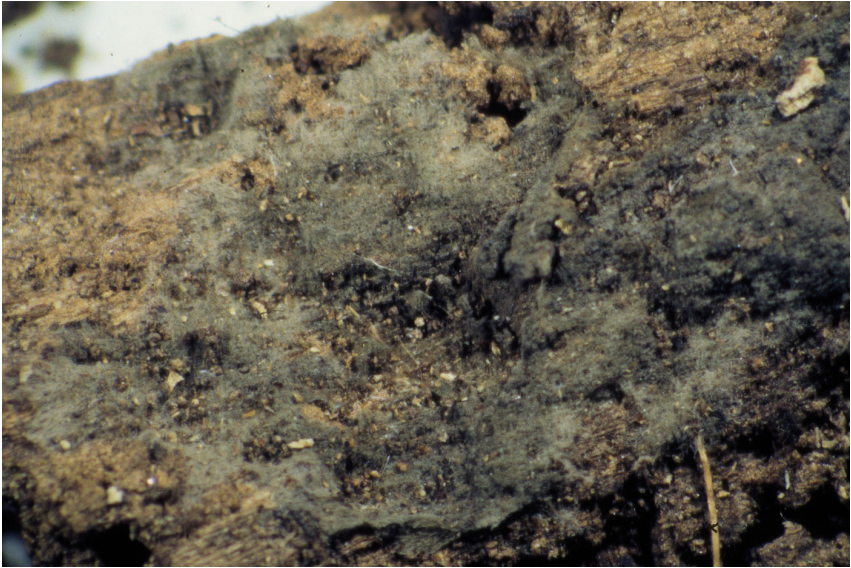


Fig. 1: Basidiome, ex holotype of *Tomentella griseoviolacea* Litsch. Image width = 9 mm [PRM 490662]



Fig. 2: Hymenophore and margin, ex holotype of *Tomentella griseoviolacea* Litsch. Image width = 9 mm [PRM 490662]

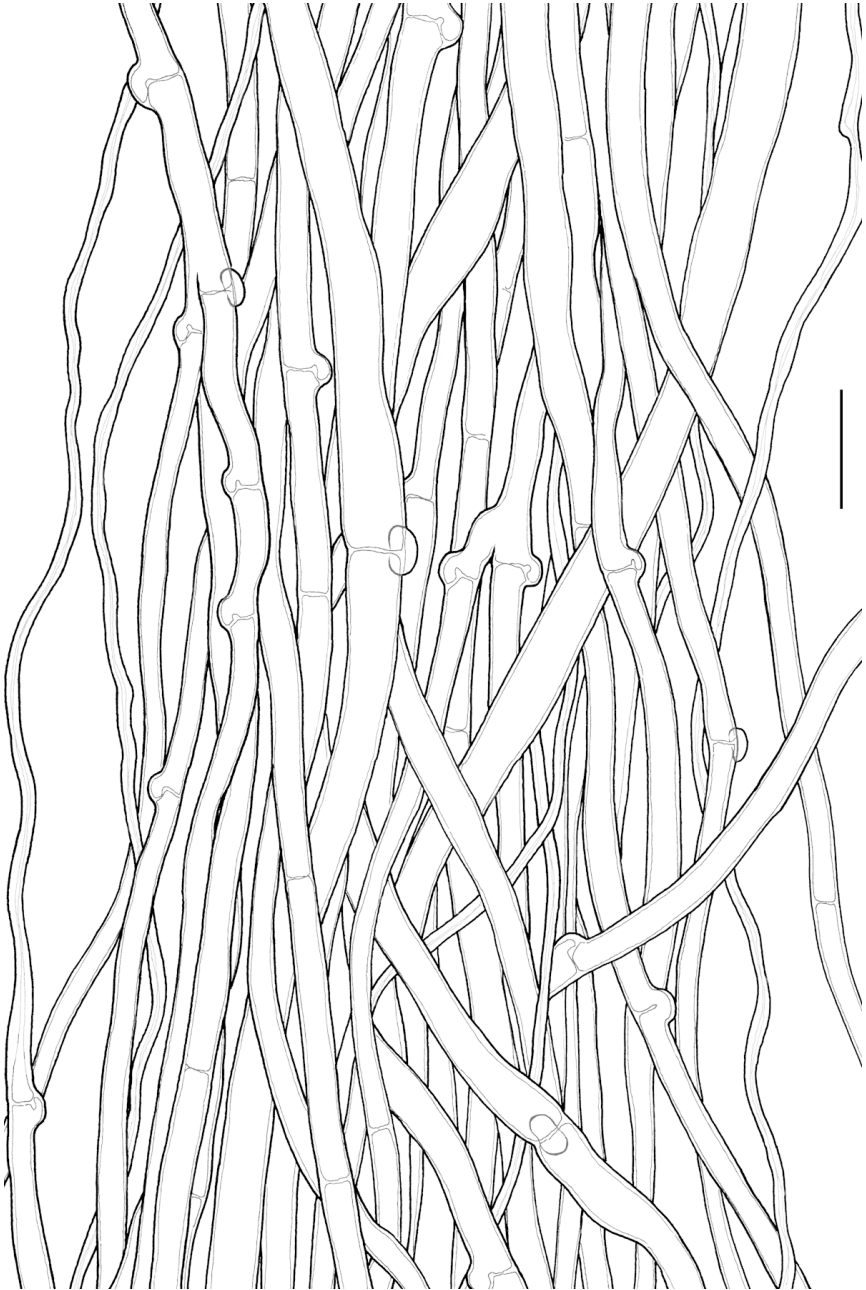


Fig. 3: Loose hyphael strand from subiculum, ex holotype of *Toментella griseoviolacea* Litsch. Bar = 10 μ m [PRM 490662]

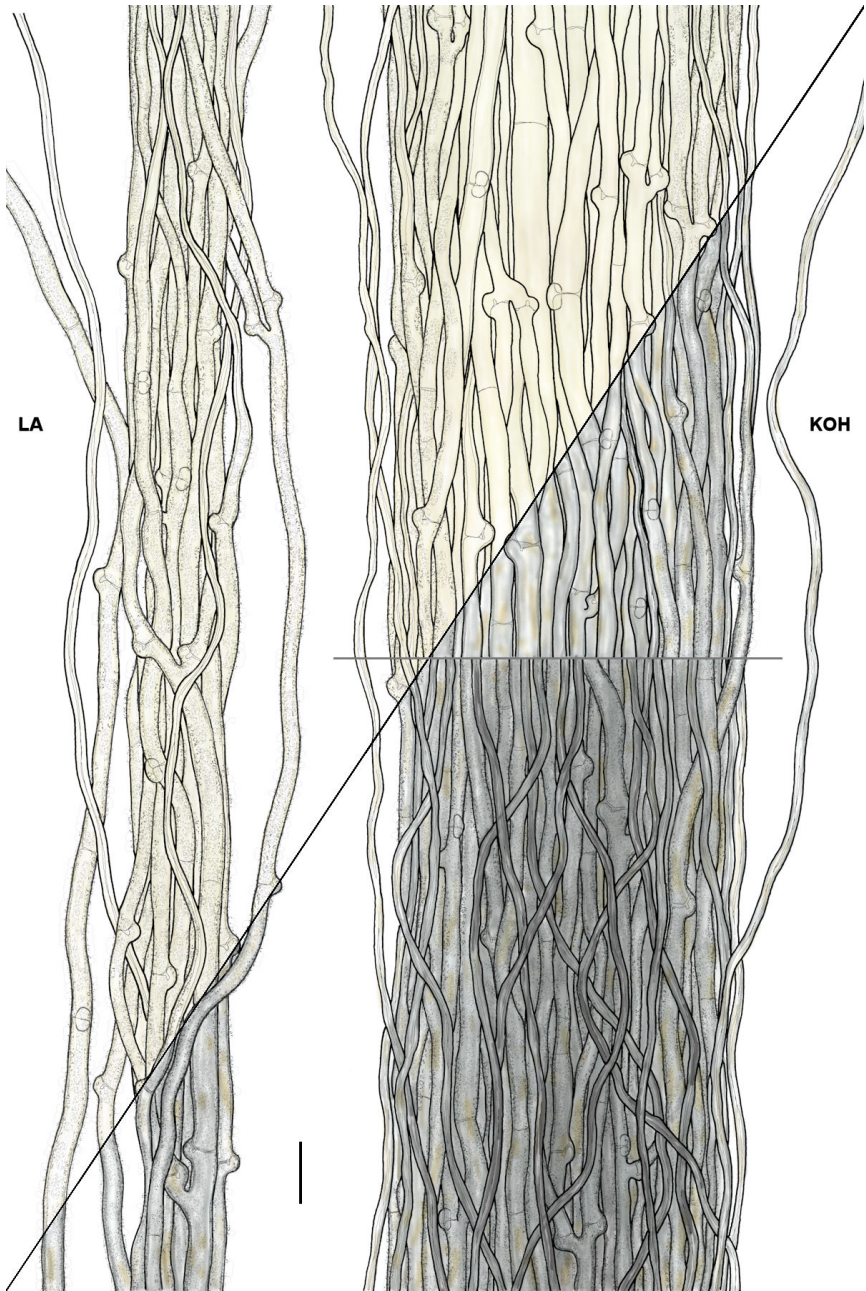


Fig. 4: Rhizomorphs, ex holotype of *Tomentella griseoviolacea* Litsch. Bar = 10 μm [PRM 490662]

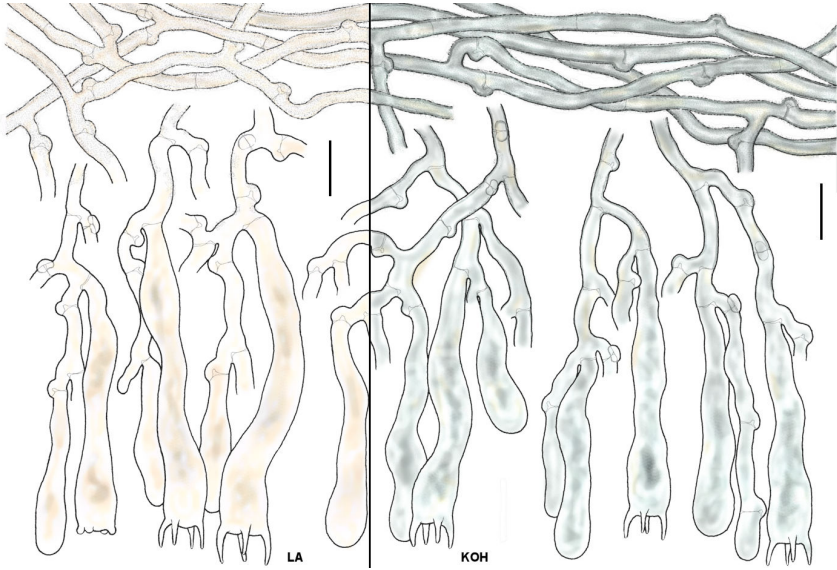


Fig. 5: Basidia, subhymental and subcicular hyphae, ex holotype of *Tomentella griseoviolacea* Litsch. Bar = 10 μ m [PRM 490662]

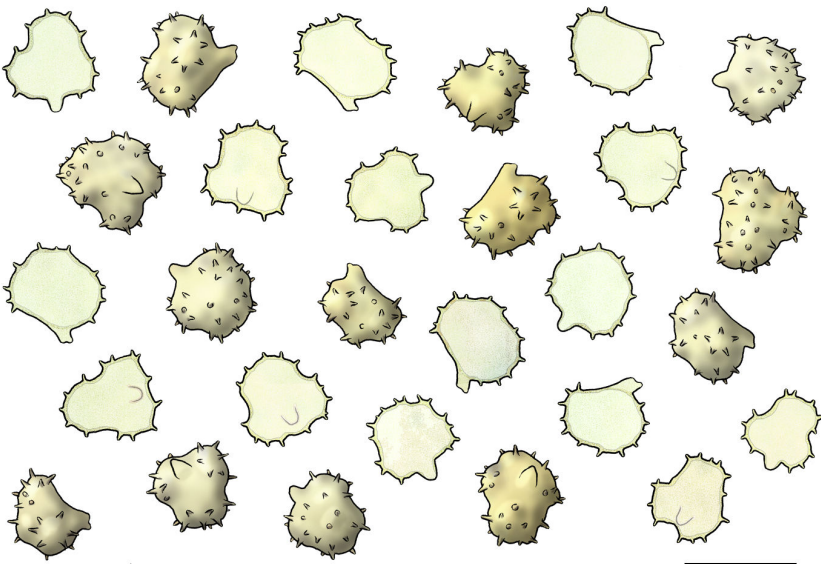


Fig. 6: Basidiospores, ex holotype of *Tomentella griseoviolacea* Litsch. Bar = 10 μ m [PRM 490662]



Excerpts from *Crusts & Jells*

Descriptions and reports of resupinate Aphyllophorales and Heterobasidiomycetes

Authored and published by

ELIA MARTINI
Via ai Ciòss 21
CH-6676 Bignasco
Switzerland

Email: emart@aphyllo.net
<http://www.aphyllo.net>
Orcid: 0000-0002-4709-2964



Issue N° 119:

Tomentella griseoviolacea Litsch.

Released on: 1st December, 2017

© E. Martini

This work is licensed under a [Creative Commons Attribution 4.0 International License \(CC BY 4.0\)](https://creativecommons.org/licenses/by/4.0/)

