

№ 110

Tomentella mairei

Bourdot

Figures 1–8

Tomentella mairei Bourdot 1918 [1] PC!

= *Tomentella cinerascens* var. *fragilis* Bourdot & Galzin 1924 [2 : 161]
PC! ≡ *Tomentella fragilis* (Bourdot & Galzin) M.J. Larsen 1974 [6 : 100]

Basidiome effused, encrusting, adherent, tomentose, felted, up to 1 mm thick.

Hymenial surface smooth or almost so, continuous, very pale brown to light yellowish brown, maybe with a faint olivaceous tint (10YR–2.5Y 8–6/4).

Subhymenium thickening and becoming slightly crustose, up to 0.3 mm thick, concolorous with the fertile surface.

Subiculum normally thick, tomentose, soft, very pale brown to light yellowish brown, some parts up to yellowish brown (10YR 7–5/4), slightly paler to slightly darker than the hymenial surface.

Margin indistinct, fertile throughout, shortly thinning out or somewhat fimbriate.

Rhizomorphs present in subiculum, infrequent, up to 50 µm thick, light yellowish brown to yellowish brown.

Hyphal system monomitric; most hyphae with fibulate primary septa.

Subhymenial hyphae regular to slightly irregular, fibulate, (1.5) 2.5–4.5 (5.5) µm in diam., compactly arranged, richly branched, often collapsed, occasionally with intercalar swellings (remains of old basidia or basidioles) and therefore up to 8 (10) µm broad, thin-walled, hyaline to subhyaline.

Subicular hyphae regular, fibulate or with some sparse simple septa, (1.5) 2–5 µm in diam., with thickening or thick wall, subhyaline to yellowish, sometimes with ochraceous content.

Rhizomorphs simple, not differentiated, built up by hyphae like the subicular ones.

Cystidia absent.

Basidia at first subglobose to pyriform, broadly clavate, then more or less subcylindrical with a faint median compression or somewhat suburniform, 40–50 (70) × (8) 9–11 (12) μm (top), 6–10 μm (lower half), with a fibulate basal septum; 4 sterigmata up to 5 μm long.

Basidiospores with irregular or slightly lobed outline, shortly potatiform, 8–10 (10.5) × (5.8) 6–7.5 (8) × (7) 7.5–9 μm , $Q^1 = 1.2\text{--}1.5$, $Q^2 = 1\text{--}1.25$, echinulate, thick-walled, pale yellowish to pale yellowish brown, almost concolorous with the other elements; aculei tapering, up to 1.2 (1.5) μm long and 0.3–0.6 μm wide at the base for the type of *T. mairei*, up to 1.5 (2) μm long and 0.4–0.8 μm wide at the base for the type of *T. fragilis*.

Chemical reactions: IKI–. CB: young basidiospores and some basal hyphae more or less distinctly cyanophilous. KOH: hymenophore, context and subiculum not or only faintly darkening.

Incrustation: none.

Comments

The original description by Bourdot (1918) is apparently lost. Bourdot & Maire (1920: 80) wrote ‘*Tomentella mairei* Bourdot. Espèce nouvelle, décrite dans le journal *Lorraine pharmaceutique* (Nancy), 4e année, T. IV, n° 1, en avril 1918’, and in Bourdot & Galzin (1924: 152) ‘*T. mairei* Bourd. Nouv. esp. Tom., 1918’. I have searched throughout for such a publication, also with the aid of French and German librarians¹ and arrived to the conclusion that this journal has been published only during the years of the Great War. It is not to be confused with the *Journal de Pharmacie d’Alsace et de Lorraine* that, moreover, changed name many times. There is no trace in libraries catalogues of *Lorraine Pharmaceutique*, but may still be buried in some archive.

In the same article of 1920, Bourdot & Maire added, with some doubts, new collections from Haute-Marne, with darker basal hyphae and ‘different d’aspect de ceux de Seine-et-Marne’; the use of ‘ceux’ – plural pronoun – suggests that there was more than one original specimen. A cumulative(?) description appeared in Bourdot & Galzin (1924 : 152) and Bourdot & Galzin (1928 : 502), depicting a species different from the one represented by the only known original collection, which is L. Maire 331, Bourdot 23118 (PC), listed as ‘(?) Holotype’ by Larsen (1974), and here selected as lectotype. Later authors up to Larsen (1974), e.g. Christiansen

¹The author express gratitude to Jutta Schöffel (Staatsbibliothek zu Berlin), Joerg Siedler (Universitätsbibliothek Marburg), Eric Varon (Bibliothèque Inter universitaire de Santé, Paris) for the help in the bibliographical search.

1960 : 275, Saccardo & Trotter 1925 : 553, referred to the description of 1924, and misinterpreted the species concept.

The type specimen of *Tomentella fragilis* shows spores with more sparsely distributed and stronger aculei, but the shape of the spores is the same. There are also minimal differences in the shape of hymenial elements and hyphae, that doesn't provide good characters to keep the species separated.

It is worth noting that Larsen (1974), while reintroducing *T. fragilis*, gave almost no distinctive characters to separate it from *T. mairei* in the diagnosis, but in the key at p. 98, kept them apart on account that the latter is a terrestrial species ('terricolous'), missing the fact that the type of *T. fragilis* was found on stones, thus not "lignicolous".

Specimens examined

FRANCE — **Aveyron** – Belly, on stones, leg. A. Galzin, 16.XII.1921, lectotype of *Tomentella cinerascens* var. *fragilis* Bourdot & Galzin (PC: Bourdot 33306) — **Doubs** – Jougne, route d'Entre les Fours, on litter (*Fagus* sp.), leg. R. Hentic, 28.VIII.1999 (em-7381, rh-9933) — **Seine-et-Marne** – Lizy-sur-Ourcq, on soil, leg. L. Maire, IX.1917, lectotype of *Tomentella mairei* Bourdot (PC: Bourdot 23118)

SWITZERLAND — **Ticino** – Gordevio, Saleggio, on stems of *Dryopteris* sp., leg. E. Zenone, 10.XII.1993 (em-6017) – Monte, Dosso di Pianca, on litter, leg. F. Delmenico, 17.VI.2007 (em-12548)

Materials and methods

Specimens sampling and methodological details are described separately in this issue:
Excerpts from *Crusts & Fells*, n° 0

References

- [1] BOURDOT, H. (1918). '[Une nouvelle espèce de Tomentella, *Tomentella mairei*]'. *Lorraine Pharmaceutique*, 4 (1): [pag. unknown]
- [2] BOURDOT, H. AND GALZIN, A. (1924). 'Hyménomycètes de France. X. Phylactériés'. *Bulletin de la Société Mycologique de France*, 40 (1-2): 105–162
- [3] BOURDOT, H. AND GALZIN, A. (1928). *Hyménomycètes de France*. Paris. 761 p. URL: <http://bibdigital.rjb.csic.es/ing/Libro.php?Libro=3448>
- [4] BOURDOT, H. AND MAIRE L., L (1920). 'Notes critiques sur quelques Hyménomycètes nouveaux ou peu connus'. *Bulletin de la Société Mycologique de France*, 36 (2): 69–85. URL: <http://www.biodiversitylibrary.org/item/106599#page/97/>
- [5] CHRISTIANSEN, M.P. (1960). 'Danish resupinate fungi, part II. Homobasidiomycetes'. *Dansk Botanisk Arkiv*, 19 (2): 60–388
- [6] LARSEN, M.J. (1974). 'A contribution to the taxonomy of the genus *Tomentella*'. *Mycologia Memoirs*, 4: 1–145
- [7] SACCARDO, P.A. AND TROTTER, A. (1925). 'Supplementum Universale, Pars X'. *Sylloge Fungorum*, 23: 1–1026. URL: <http://www.biodiversitylibrary.org/item/25489#page/9>



Fig. 1: Dried basidiome. Image width = 20 mm [em-7381]



Fig. 2: Dried basidiome. Image width = 9 mm [em-7381]



Fig. 3: Dried basidiome. Image width = 9 mm [em-7381]



Fig. 4: Dried basidiome encrusting mosses. Image width = 9 mm [em-12548]



Fig. 5: Simplified vertical section through the basidiome showing basidia, subhymenial and subicular hyphae, and a thin rhizomorph, ex lectotype of *Tomentella mairei*. Bar = 10 μ m [PC: Bourdot 23118]

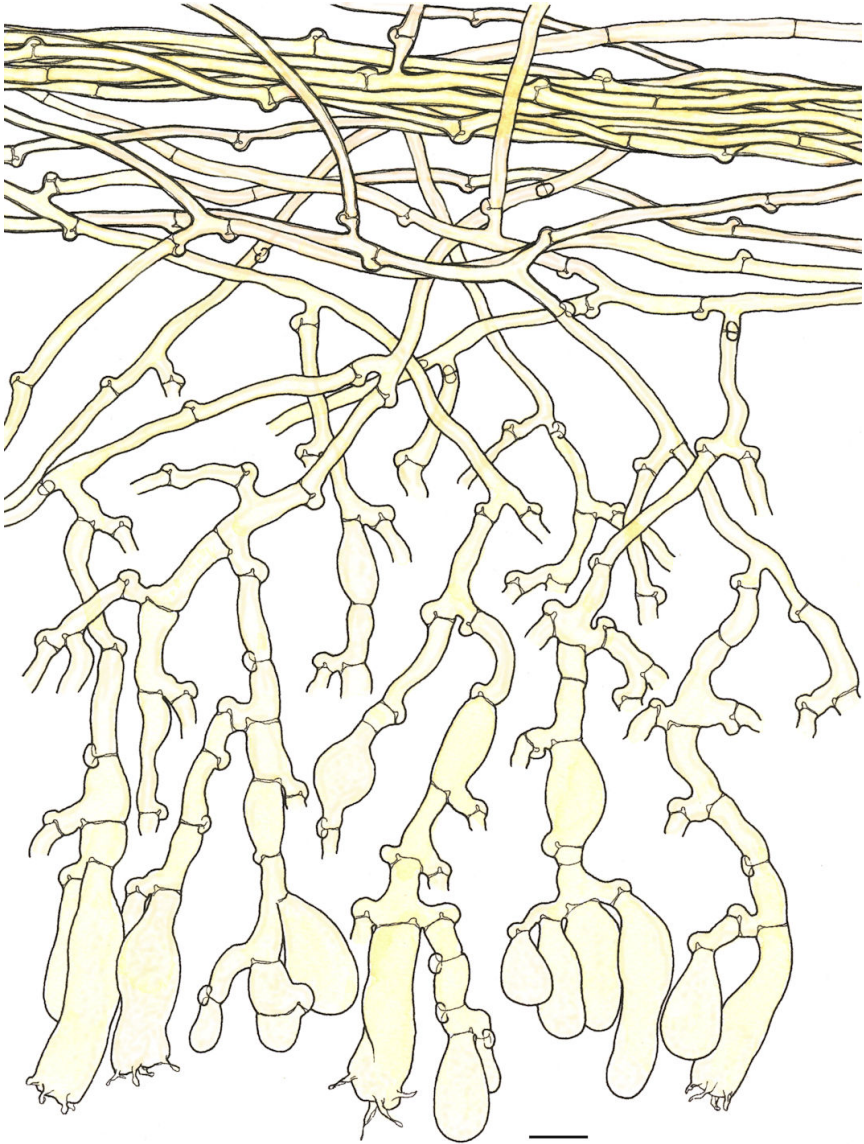


Fig. 6: Simplified vertical section through the basidiome showing basidia, subhymenial and subicular hyphae, and a thin rhizomorph, ex lectotype of *Tomentella fragilis*. Bar = 10 μ m [PC: Bourdot 33306]

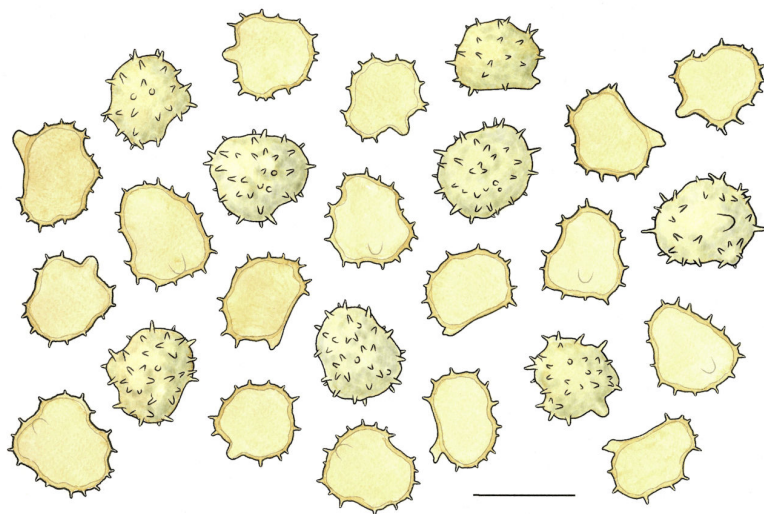


Fig. 7: Basidiospores, ex lectotype of *Tomentella mairei*. Bar = 10 μm [PC: Bourdot 23118]

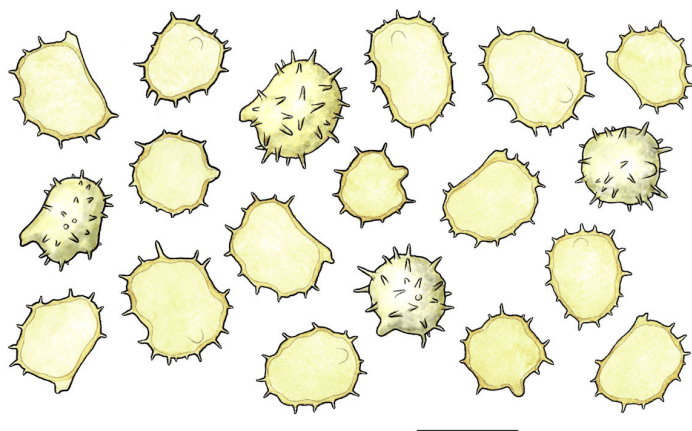


Fig. 8: Basidiospores, ex lectotype of *Tomentella fragilis*. Bar = 10 μm [PC: Bourdot 33306]



Excerpts from *Crusts & Fells*

Descriptions and reports of resupinate Aphyllophorales and Heterobasidiomycetes

Authored and published by

ELIA MARTINI
Via ai Ciòss 21
CH-6676 Bignasco
Switzerland

Email: emart@aphyllo.net
<http://www.aphyllo.net>



Issue № 110:

Tomentella mairei Bourdot

Released on: 1st May, 2017

© E. Martini

This work is licensed under a [Creative Commons Attribution 4.0 International License](https://creativecommons.org/licenses/by/4.0/) (CC BY 4.0)

