

Scopuloides leprosa

(Bourdot & Galzin) Boidin, Lanq. & Gilles

Figures 1–9

Peniophora radicata subsp. *leprosa* Bourdot & Galzin 1913 [2 : 394] ≡ *Peniophora leprosa* (Bourdot & Galzin) Bourdot & Galzin 1928 [3 : 312] ≡ *Phanerochaete leprosa* (Bourdot & Galzin) Jülich 1979 [5 : 334] ≡ *Scopuloides leprosa* (Bourdot & Galzin) Boidin, Lanq. & Gilles 1993 [1 : 200]

Basidiome effused, sometimes orbicular, soft membranaceous to subceraceous and more or less separable when fresh, becoming crustose and strongly adherent when dry, 0.1–0.5 (1) mm thick.

Hymenophore smooth to irregular, rarely slightly grandinoid, pubescent for the projecting cystidia, whitish to yellowish alutaceous, ochraceous, often finely and sparsely dotted, when well developed deeply cracking on drying.

Context thickening, whitish to yellowish.

Subiculum scanty to well developed but anyway thin, fibrillose to fibrose.

Margin abrupt or thinning out, sterile, pruinose, somewhat pulverulent to fibrillose, discolour, whitish.

Rhizomorphs sometimes present at the margin or in cracks of the substrate, up to 1 mm thick, pilose, soft, whitish, with a compact yellowish core when well developed.

Hyphal system monomitic.

Subhymenial hyphae building a thickening layer, compactly arranged, almost indistinct, (2) 2.5–4 (5) μm in diam., with simple septa and thin to thickening wall, hyaline.

Subicular hyphae 3–5.5 (9) μm , infrequent, with simple or rare fibulate septa hyaline, with thin or thickening wall, smooth or strongly encrusted and ending at the margin in long lamprocystidia-like elements and tapering hyphae.

Rhizomorphs structured, built up by 1) a core of 4–13 (16) μm wide

hyphae, regular, distinct, thin to thick-walled, with distant simple and filulate septa (wider hyphae often with light yellowish homogeneous content); **2**) an outer layer of strongly encrusted 2–4 μm wide pseudoskeletal hyphae becoming dichotomously branched and projecting with tapering ends, with thickening to thick walls, hyaline. **Cystidia** present on surface as clavate to more or less capitate elements with smooth or only coarsely encrusted top, and eventually some long lamprocystidia-like elements.

Cystidia of two kinds: **1**) lamprocystidia, 40–80 (100) \times (5) 8–14 μm , common, enclosed or projecting up to 50 μm , fusiform, becoming longer (–200 μm) and sometimes branched at the margin and in subiculum; **2**) cylindrical leptocystidia with obtuse or slightly swollen apex, infrequent, up to 150 (200) μm long and 8–10 μm in diam., enclosed and projecting up to 90 μm , often with some secondary simple septa.

Basidia narrowly clavate, 20–30 (40) \times 4–6 μm , with a simple basal septum; 4 sterigmata up to 5 μm long.

Basidiospores ellipsoid with a slightly flattening adaxial side, (3.5) 4–5.5 (6) \times (2) 2.5–3 μm , smooth, thin-walled, hyaline, 1–2 guttulate, 1–nucleate.

Chemical reactions: CB–; IKI– (lamprocystidia dextrinoid teste Wilhelm & Duc [4]); SA–.

Incrustation: granular crystalline matter strongly adhering to cystidia and hyphae at the margin and outer layer of rhizomorphs.

Voucher specimens

FRANCE — **Aveyron** – Bozouls, Trou d'Enfer, on bark of a lying, decayed branch of a deciduous tree, leg. E. Martini, 30.X.2004 (em-8529) — **Pyrénées-Orientales** – Serdinya, Riv.de Baillmarsane, on wood of a decayed branch of a deciduous tree, leg. E. & F. Martini, 28.X.1995 (em-5804) — **Rhône** – Sérézin-du-Rhône, Ile de la Table Ronde, on wood of a lying, rather hard branch of a deciduous tree, leg. E. Martini, 13.X.2015 (em-12786)

SWITZERLAND — **Thurgau** – Berlingen, Wildbach, on wood of a lying, decayed branch of *Fagus sylvatica*, leg. E. Martini, 5.X.2006 (em-9140) — **Ticino** – Arzo, Perfetta, on strongly decayed wood of a deciduous tree, leg. E. Martini, 15.X.1994 (em-5580) – Casima, Cugnoli, on wood of a lying, decayed branch of *Corylus avellana*, leg. F. Delmenico, 15.XI.2008 (em-11940) – Casima, Ponte Breggia, on wood of a lying, decayed branch of *Salix caprea*, leg. F. Delmenico, 30.X.2005 (em-9632) – *ibid.*, on lying, decayed wood of *Fraxinus excelsior*, leg. F. Delmenico, 28.X.2006 (em-9637) – Losone, San Lorenzo, on wood of a twig of *Phyllostachys sp.*, leg. E. Zenone, 7.XI.1992 (em-3333) – Meride, Bolle, on wood of a lying, rather hard trunk of *Prunus avium*, leg. E. Martini, 13.X.2007 (em-10171) – Meride, Crocifisso, on wood and bark of a lying, decayed branch of a deciduous tree, leg. E. Martini, 27.X.2007 (em-10275) – Meride, Fontana, on wood of a lying, rather hard branch of a deciduous tree, leg. E. Martini, 2.IX.2006 (em-8845) – Meride, Meriggio, on wood of a lying, rather hard branch of *Fagus sylvatica*, leg. E. Martini, 25.VIII.2007 (em-10032) – Morbio Superiore, Rovagina, on wood of a lying, decayed trunk of a deciduous tree (*Fraxinus excelsior?*), leg. F. Delmenico, 25.IV.2009 (em-11977) – Novazzano, Valle della Motta, on bark of a lying, decayed branch of *Salix alba*, leg. E. Zenone, 28.I.1991 (em-3431) – *ibid.*, on wood of a lying, decayed branch of *Clematis vitalba*, leg. E. Zenone, 28.III.1991

(em-3429) – *ibid.*, on wood of a lying, strongly decayed trunk of *Alnus incana*, leg. E. Zenone, 24.X.1991 (em-3097) – *ibid.*, on wood of a standing, hard trunk of *Euonymus europaeus*, leg. E. Zenone, 28.XI.1991 (em-3428) – *ibid.*, on wood of a lying, decayed trunk of *Salix sp.*, leg. E. Zenone, 28.VI.1992 (em-3207) – *ibid.*, on *Phellinus sp.*, leg. E. Zenone, 22.I.1993 (em-3427)

References

- [1] BOIDIN, J., LANQUETIN, P. AND GILLES, G. (1993). ‘Contribution à la connaissance des *Phanerochaetoideae* de France (Basidiomycotina)’. *Cryptogamie, Mycologie*, 14 (3): 195–206
- [2] BOURDOT, H. AND GALZIN, A. (1912). ‘Hyménomycètes de France, IV. Corticiés: *Vuilleminia*, *Aleurodiscus*, *Dendrothele*, *Gloeocystidium*, *Peniophora*’. *Bulletin de la Société Mycologique de France*, 28 (4): 349–409. URL: <http://www.biodiversitylibrary.org/item/106667#page/423>
- [3] BOURDOT, H. AND GALZIN, A. (1928). *Hyménomycètes de France*. Paris. 761 p. URL: <http://bibdigital.rjb.csic.es/ing/Libro.php?Libro=3448>
- [4] DUC, J. AND WILHELM, M. (2013). ‘Lepröser Felsenrindenpilz. *Scopuloides leprosa*’. *Schweizerische Zeitschrift für Pilzkunde*, 91 (2): 4–6
- [5] JÜLICH, W. (1979). ‘Studies in resupinate Basidiomycetes VI. On some new taxa’. *Persoonia*, 10 (3): 325–336
- [6] SALCEDO, I., BENGURIA, E. AND MELO, I. (2009). ‘*Scopuloides leprosa* (Bourdot & Galzin) Boidin, Lanq. & Gilles, nueva cita para el País Vasco’. *Zizak*, 6: 63–75. URL: <http://www.micologiaportugalete.com/zizak-6/>
- [7] WAKEFIELD, E.M. AND PEARSON, A.A. (1919). ‘Records of Surrey resupinate Hymenomycetes’. *Transactions of the British Mycological Society*, 6 (4): 317–321. DOI: [http://dx.doi.org/10.1016/S0007-1536\(17\)80049-8](http://dx.doi.org/10.1016/S0007-1536(17)80049-8). URL: <http://www.cybertruffle.org.uk/cyberliber/59351/index.htm>
- [8] ZENONE, E. AND MARTINI, E. (2004). ‘Afilloforali della Valle della Motta (Ticino, Svizzera)’. *Bollettino della Società Ticinese di Scienze Naturali*, 92 (1-2): 53–65. URL: http://www.aphyllo.net/app/docs/bstsn_2004_92_53-65.pdf



Fig. 1: Dried basidiome. Image width = 38 mm [em-3428]



Fig. 2: Dried basidiome. Image width = 32 mm [em-3207]



Fig. 3: Dried basidiome [em-3207]

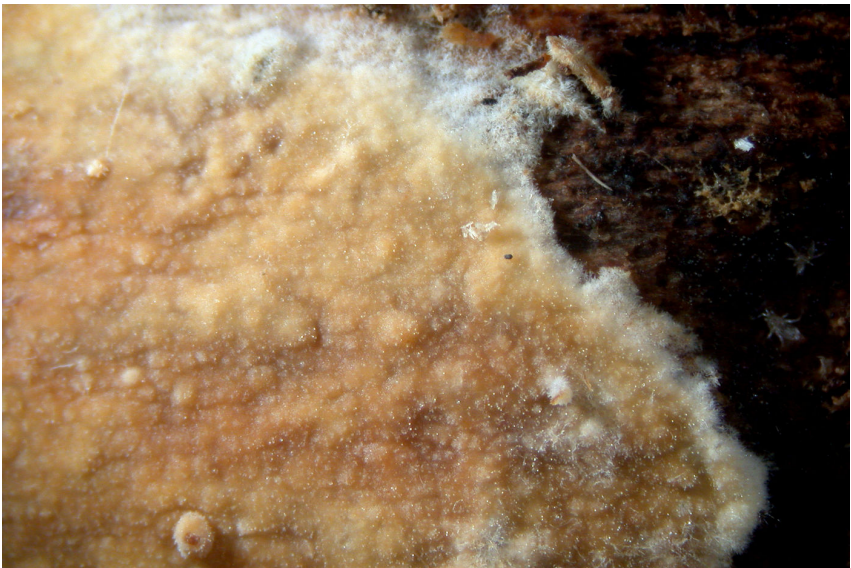


Fig. 4: Basidiome toward the margin. Image width = 11 mm [em-8845]



Fig. 5: Dried basidiome: detail of the hymenophore and margin. Image width = 9 mm [em-3430]



Fig. 6: Rhizomorphs at the margin. Image width = 9 mm [em-3431]

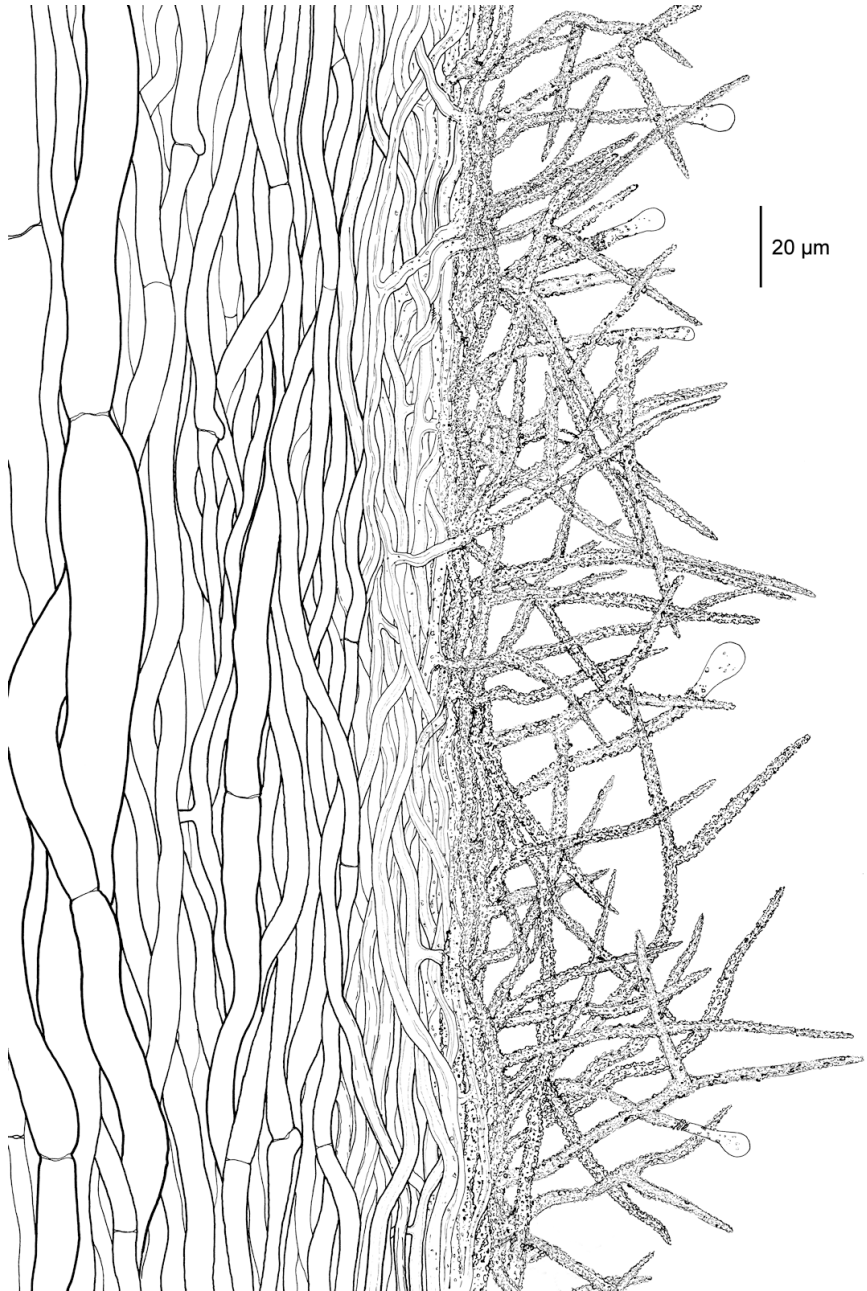


Fig. 7: Section through a rhizomorph [em-3431]

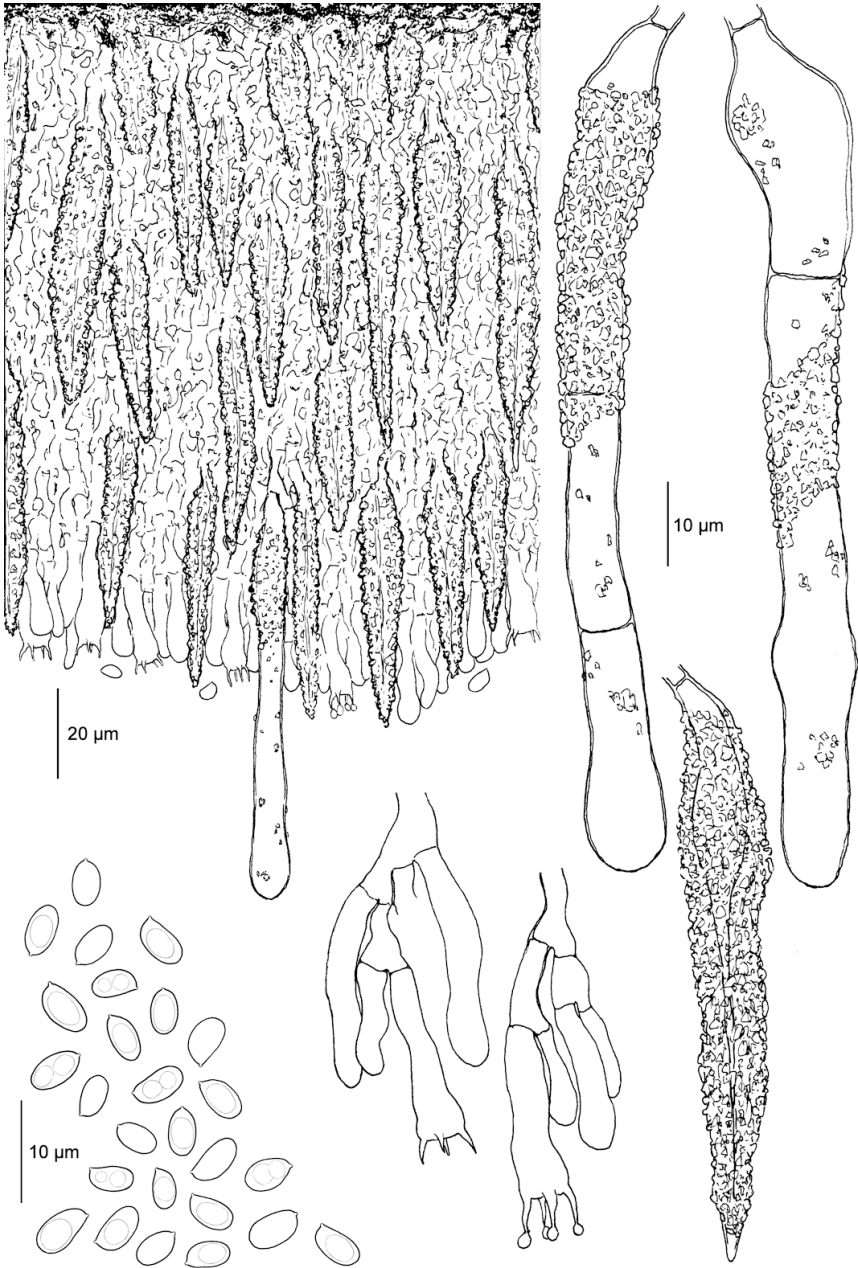


Fig. 8: Vertical section through the basidiome, cystidia, basidia and subhymental hyphae, basidiospores [em-3333]

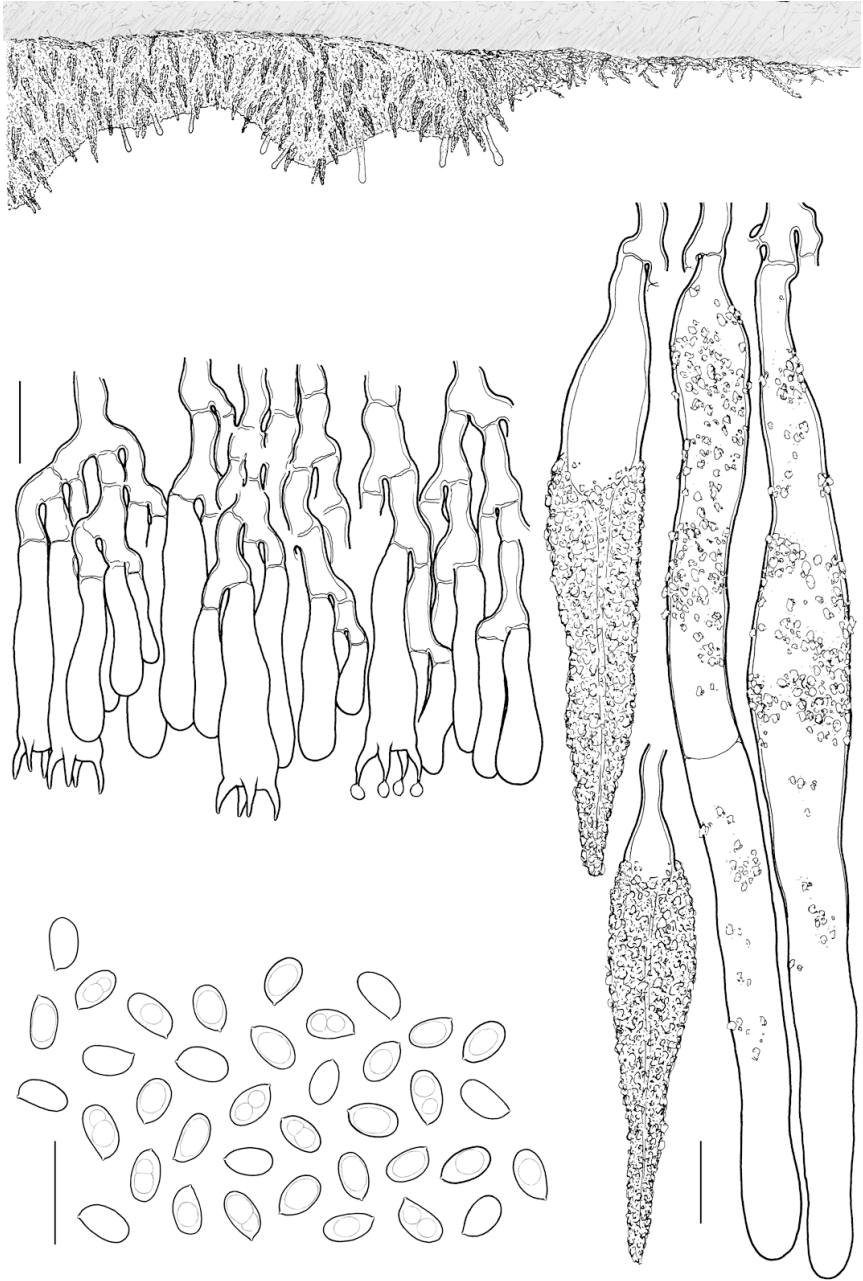


Fig. 9: Vertical section through the basidiome and margin, cystidia, basidia and subhymental hyphae, basidiospores. Bar = 10 μ m [em-3207]



Excerpts from *Crusts & Fells*

Descriptions and reports of resupinate Aphyllophorales and Heterobasidiomycetes

Authored and published by

ELIA MARTINI
Via ai Ciòss 21
CH-6676 Bignasco
Switzerland

Email: emart@aphyllo.net
<http://www.aphyllo.net>



Issue № 101:

Scopuloides leprosa (Bourdot & Galzin) Boidin, Lanq.
& Gilles

Released on: 1st August, 2016

© E. Martini

This work is licensed under a [Creative Commons Attribution 4.0 International License \(CC BY 4.0\)](https://creativecommons.org/licenses/by/4.0/)

